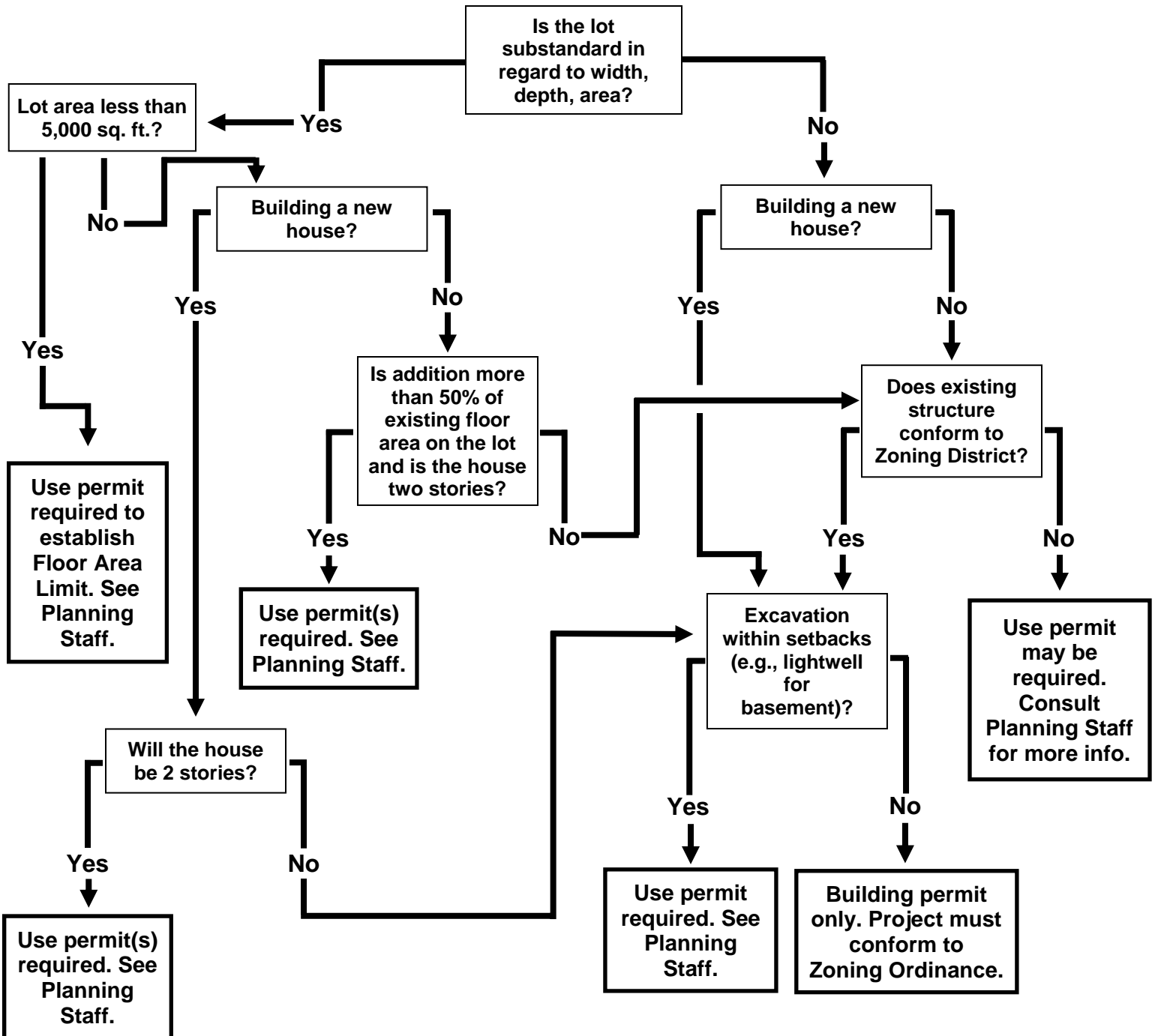




# COMMUNITY DEVELOPMENT DEPARTMENT PLANNING DIVISION

701 Laurel Street  
Menlo Park, CA 94025  
phone: (650) 330-6702  
fax: (650) 327-1653  
planning@menlopark.org  
<http://www.menlopark.org>

## When Is a Use Permit Needed to Build on a Single-Family Lot?\*



\* For properties that have an existing use permit, a use permit revision may be required. Please consult Planning Staff.