



**SPECIAL MEETING MINUTES**

**Date:** 11/29/2017  
**Time:** 6:00 p.m.  
**City Council Chambers**  
**701 Laurel St., Menlo Park, CA 94025**

**6:00 p.m. Closed Session** (City Hall, 1<sup>st</sup> Floor Conference Room)

Mayor Kirsten Keith called the meeting to order at 6:11 p.m.

**Present:** Cline, Keith, Ohtaki  
**Absent:** Carlton, Mueller

Public comment:

- Pamela Jones spoke about creating an independent districting commission and provided a handout

At 6:14 p.m. members of the public were excused and the City Council entered into Closed Session to discuss the following two items:

**CL1.** Closed session conference with legal counsel on anticipated litigation pursuant to Government Code §54956.9(d)(2) – one case

Attendees: City Manager Alex McIntyre, City Attorney Bill McClure

**CL2.** Closed session conference with legal counsel on existing litigation pursuant to Government Code section 54956.9 (d)(1) – City of East Palo Alto v. City of Menlo Park et al., San Mateo County Superior Court Case No. 16CIV03062

Attendees: City Manager Alex McIntyre, City Attorney Bill McClure, Assistant City Manager Chip Taylor

The Closed Session then adjourned at 6:56 p.m. to Regular Session.

**7:00 p.m. Regular Session** (City Council Chambers)

**A. Call To Order**

Mayor Keith called Regular Session to order at 7:08 p.m.

**B. Roll Call**

**Present:** Carlton (arrived at 8:06 p.m.), Cline, Keith, Ohtaki  
**Absent:** Mueller  
**Staff:** City Manager Alex McIntyre, City Attorney Bill McClure, Deputy City Clerk Jelena Harada

**C. Pledge of Allegiance**

Mayor Keith led the Pledge of Allegiance.

**D. Report from Closed Session**

There was no reportable action from Closed Session.

**E. Public Comment**

- Amar Murugan spoke about Willows neighborhood traffic.
- Sheldon Kay spoke about Willows neighborhood traffic.
- Chris DeCardy spoke about Willows neighborhood traffic.
- Paul Montgomery spoke about Willows neighborhood traffic.
- Brian Gilmer spoke about Willows neighborhood traffic.
- Tracy Morris spoke about Willows neighborhood traffic.
- Michele Barry spoke about Willows neighborhood traffic.
- Stephanie Zeller spoke about Willows neighborhood traffic.
- Sarah Judas spoke about Willows neighborhood traffic.
- Rielly DeCardy spoke about Willows neighborhood traffic.
- Brie Cioffi spoke about Willows neighborhood traffic.
- Rebecca Wang spoke about Willows neighborhood traffic.
- Judy Rocchio spoke about Willows neighborhood traffic.
- Tom Caldecott spoke about Willows neighborhood traffic.
- Rose Bickerstaff spoke about traffic on Chilco Street and Terminal Avenue.

**F. Public Hearing**

- F1. Public Hearing to consider establishing a districting committee and to receive community input regarding district boundaries for district based elections pursuant to Elections Code Section 10010 (Staff Report #17-287-CC)

City Attorney Bill McClure provided a brief introduction of the item. Shalice Tilton, representative of National Demographics Corporation and Assistant City Attorney Cara Silver each provided presentations.

Councilmember Carlton joined the meeting at 8:06 p.m.

Mayor Keith opened the public hearing at 8:20 p.m.

- Helen Grieco, California Common Cause, spoke in support of an independent political process.
- Jen Wolosin spoke in support of an independent districting commission.
- Hilary Kushins spoke in support of an independent districting commission.
- Yakov Kronrod spoke in support of an independent districting commission and the six-district option.
- John Kadvany spoke in support of fewer districts, similar to Santa Clara.
- Pamela Jones spoke in support of an independent districting commission.

- Bianca Walser spoke in support of an independent districting commission.
- Michael Perez spoke in support of an independent districting commission.
- Lynne Bramlett spoke in support of an independent districting commission.
- Kristen Leep spoke in support of an independent districting commission.
- David Mihai, Represent.Us, spoke in support of an independent districting commission.
- Rachel Bickerstaff spoke in support of an independent districting commission.
- Ken Doniger spoke against an independent districting commission.
- David Brown spoke in support of an independent districting commission.
- Nina Wouk spoke in support of an independent districting commission.
- Steve Chessin, President of Californians for Electoral Reform, spoke in support of an independent districting commission.
- Cecilia Taylor spoke in support of allowing the submittal of district maps by Menlo Park residents only.

**ACTION:** Motion and second (Cline/Ohtaki) to close the public hearing. By acclamation, Mayor Keith closed the public hearing at 8:55 p.m.

**ACTION:** Motion and second (Cline/Ohtaki) to direct staff to prepare a resolution establishing a nine-member advisory districting commission based on the following qualifications: (1) Must be a resident of Menlo Park and resided in Menlo Park for at least the past five years, (2) Must be a registered voter, (3) Must have voted in two of the last three local Menlo Park elections in which they were eligible to vote, (4) Meet the general eligibility requirements prescribed in State law for independent districting commissions, and (5) that the appointment procedure include an open application process, with the random selection of three committee members who will then be empowered to select the final six members from the remaining applicant pool, passed 4-0 (Mueller absent).

## **G. Regular Business**

- G1. Consider appealing the Santa Clara Council Planning Commission approvals for the Center for Academic Medicine (Staff Report #17-291-CC)

Assistant Public Works Director Nikki Nagaya made a presentation.

- Amar Murugan spoke about
- Sheldon Kay spoke about

**ACTION:** Motion and second to appeal the Santa Clara County Planning Commission approvals for the Center for Academic Medicine.

- G2. Approve a comment letter on the Draft Environmental Impact Report for the Stanford University 2018 General Use Permit Project (Staff Report #17-288-CC)

Public Works Director Justin Murphy made a presentation.

**ACTION:** Motion and second (Ohtaki/Cline) to approve a comment letter on the Draft EIR for the Stanford University 2018 General Use Permit Project, passed 4-0 (Mueller absent).

## **H. Informational Items**

- H1. Update on bus shelter installations in Belle Haven (Staff Report #17-290-CC)
- H2. Update on Willow Road/U.S. 101 intersection construction (Staff Report #17-289-CC)
  - Rohit Khare spoke about traffic issues on O'Keefe.

**I. City Manager's Report**

City Manager Alex McIntyre reported on the meeting between Palo Alto, East Palo Alto and Menlo Park, where traffic issues were discussed. McIntyre stated that application period for the Bell Haven Library advisory group is extended as no applicants were received. The City Council organization meeting is on December 12.

**J. Councilmember Reports**

Mayor reported on the sessions she attended at the National League of Cities in Charlotte, North Carolina. The Holiday Tree Lighting event is in Fremont Park, on December 1, 5:30 p.m. to 7 p.m. The Tree planting event in Belle Haven is on December 2 at the Senior Center.

**K. Adjournment**

Mayor Keith adjourned the meeting at 11:26 p.m.

Clay J. Curtin, Assistant to the City Manager

These minutes were accepted at the City Council meeting of December 12, 2017.



**Jim Lewis, President for the Menlo Park Historical Association.**  
(City Council Meeting, 11.14.2017)

Mayor Keith and Council members, I'm Jim Lewis, President of the Menlo Park Historical Association. I'd like to cordially invite you to our Annual Meeting scheduled for this Sunday November 19, 2017, from 2 – 4 pm. That day is a few days before the City of Menlo Park's 90th Anniversary of its incorporation, which was on November 23, 1927. That also happens to be Thanksgiving Day this year.

Our Annual Meeting is open to the Community. The meeting will be held in the Community room the Main Library, 800 Alma Street, which is adjacent to the office of the Menlo Park Historical Association, and where we have been located since 1971.

The keynote speaker's topic is entitled "Prohibition on the Peninsula," presented by Carmen Blair, of the San Mateo County History Museum. Many may not know that Menlo Park's first mayor, Alfred E. Blake, elected in 1927, was involved the following year, as a Council Member, in a recall election because he and the then mayor supported a crackdown on bootleggers as Prohibition was in force in 1927. To their credit, both survived the recall election.

As a special treat, we have invited a guest speaker born in 1927 in Menlo Park, the same year as the City of Menlo Park was created. His name is Frank Sasagawa, who will share memories of days past.

Thus, if you are interested in the topic of alcohol, bootlegging, prohibition, moonshine and fun, the meeting this Sunday is the place to be. Light refreshments will be served. We'll let you guess what the refreshments might be.

Thank you.





# MENLO PARK HISTORICAL ASSOCIATION

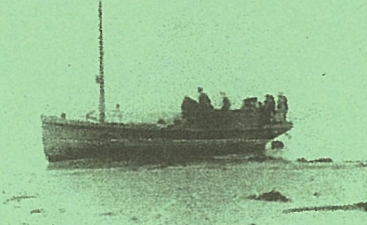
PRESENTS

Carmen Blair, Guest Speaker at The Annual Meeting

TOPIC: *Prohibition in San Mateo County*

Sunday, November 19, 2017

Location: Lower level of the Menlo Park Library



Rumrunners unloading cargo in Half Moon Bay

In the 1930s, mobster Sam Termini called San Mateo County the most corrupt community in the state. With rumrunners landing Canadian whiskey on isolated beaches, moonshiners operating in homes and a multitude of speakeasies, the county earned a reputation as one of the "wettest" in the state during Prohibition. Carmen Blair, Deputy Director of the San Mateo County Historical Association, will share Prohibition stories during an illustrated presentation.

Among her responsibilities, she is involved with school programs, public programs for adults and children, exhibit design and publications. She received her B.A. in History from Gustavus Adolphus College and her M.A. in Museum Studies from San Francisco State University

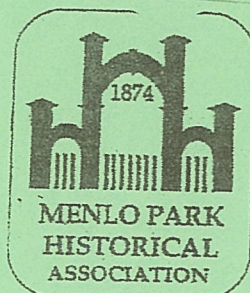
\*A short business meeting to elect Board Members will precede the introduction of the speaker. Nominations may be made over the signature of five members filed with the Association Secretary not less than five days prior to the date of the annual meeting. The Board will present a slate of nominees.\*

Let's all travel back in time when speakeasies, bootlegging, rumrunners made for an interesting Peninsula. There will be an opportunity to ask questions followed by a social hour with refreshments.

Let's have a good turnout for Carmen. So...

Mark your calendars for Sunday, November 19, 2 pm to 4 pm

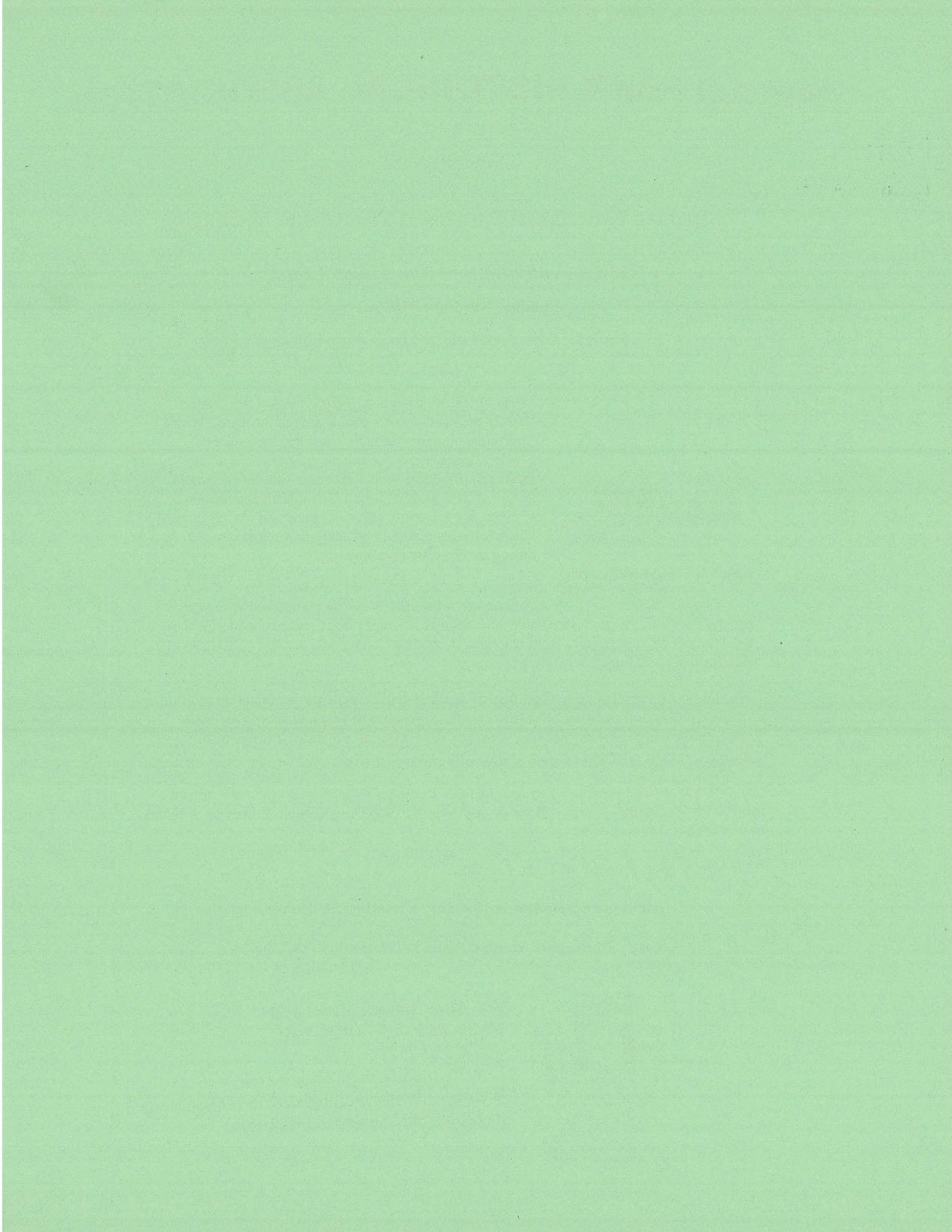
Where: Downstairs Meeting Room at the Menlo Park Library



Since 1971

800 Alma Street, Lower Level  
Menlo Park, CA 94025-3445  
(650) 330-2522  
E-mail: [mphistorical@yahoo.com](mailto:mphistorical@yahoo.com)  
Website: <http://sites.google.com/site/mphistorical>  
[facebook.com/menloparkhistorical](https://www.facebook.com/menloparkhistorical)





Judy Rocchio  
11/29/17  
item E

# Willows Potential Traffic Calming Measures

Generated at Cafe Zoe's  
November 20, 2017

## Near Term Measures:

1. Install time based "No Right Turn" signs onto Willow from Chester, Durham, O'Keefe and maybe Gilbert from 4-7 pm.
2. Deploy 5-10 Digital Speed Limit instant feedback signs on impacted streets. Equipped to take photos of license plates (?).
3. Ask MP Police Dept. to park "unused" police cars in the neighborhood to help enforce speed limits.
4. Install No thru traffic to Willow Rd/101 signs on Woodland and Middlefield (?).
5. Inform Waze of the Willows' "construction zone" status so they will stop routing people through the neighborhood.
6. Get CalTrans etc.. to better synchronize the signals at the Univ. Ave./101 intersection and the Willow Rd./101 intersection. To allow better flow of traffic.
7. Install wooden half-fences on streets to restrict entrance, like some parts of Menlo Park.
8. Plant more trees in the street to slow traffic.
9. Install a 4-Way stop at the corner of Laurel Ave and Elm Street.
10. Track the change in use pattern with car counters to determine effectiveness of mitigation action.

## Long Term Measures:

1. Transit Shuttle service to/from a new larger Ardenwood "Park and Ride" in Fremont.



# DISTRICTING AND CHARTER COMMITTEES

# DISTRICTING COMMITTEES

Three ways for the City Council to establish district boundaries:

1. The City Council may adopt boundaries
2. The City Council may appoint an advisory committee
3. The City Council may appoint an independent districting committee
  - SB 1108 (effective January 1, 2017) allows general law cities to form independent districting committees



# ADVISORY VS. INDEPENDENT COMMITTEES

	Advisory Committee	Independent Commission
Authority	Advisory to City Council	Independent authority to adopt maps
Appointment process	City Council appoints	City Council appoints
Membership criteria	<ul style="list-style-type: none"> <li>Resident of Menlo Park</li> </ul>	<ul style="list-style-type: none"> <li>Resident of Menlo Park</li> <li>Must not contain members from a single political party</li> </ul>
Restrictions on membership	City Councilmembers and their family members may not serve on committee	During past 8 years: <ul style="list-style-type: none"> <li>Elected City Councilmember</li> <li>City Council candidate</li> <li>Contributed \$500 or more to local candidates</li> </ul>



## ADVISORY VS. INDEPENDENT COMMITTEES (CONT.)

	Advisory Committee	Independent Commission
Public hearings	No minimum number	Three public hearings required.
Conduct limitations while serving		Members may not endorse, campaign or contribute to candidates
Conduct limitations post-service		<ul style="list-style-type: none"> <li>• Barred from running for City Council for 10 years</li> <li>• Barred from serving on a City Board/Commission for 4 years</li> </ul>
Transparency requirements	<ul style="list-style-type: none"> <li>• Form 700</li> <li>• Brown Act</li> <li>• Public Records Act</li> </ul>	<ul style="list-style-type: none"> <li>• Form 700</li> <li>• Brown Act</li> <li>• Public Records Act</li> </ul>

## INDEPENDENT DISTRICTING COMMITTEES

- No general law city has used independent commission to adopted district boundaries under new legislation
  
- Eight charter cities and two counties have used independent districting committees
  - Los Angeles County – 9,818,605
  - San Diego County – 3,095,313
  - San Francisco – 805,235
  - Sacramento – 466,488
  - Oakland – 390,724
  - Chula Vista – 243,916
  - Modesto – 201,165
  - Escondido – 143,911
  - Berkeley – 112,580

## COMMITTEE CONSIDERATIONS

- Time frame for committee work
- CVRA Safe Harbor – Shenkman’s position
  - Early December: Post recruitment
  - Early January: Appointments made
  - Mid February: Commission recommendation
- Staff resources
- Restrictions on committee members
- Independent commission for 2022 election?

# CHARTER ADOPTION

- Charter needed for:
  - Cumulative voting
  - Ranked choice voting
  - Hybrid at large/by district
  
- New Charter must be adopted at General Municipal Election (November of even numbered years)

# CHARTER COMMISSION

- Charter can be drafted in two ways:
  - City Council drafts
  - Elected charter commission drafts
- Elected charter commission
  - 15 members
  - Must be elected by voters
  - Unlimited purview

## QUESTIONS FOR CITY COUNCIL

- Do you want to appoint an advisory or independent districting commission?
- If you opt for advisory, should staff explore independent commission for 2022 election?
- Commissioner qualifications (i.e. geographic diversity)?
- Size of commission and selection criteria?
- Inclusion of board members?
- Timeline for decision? Staff recommendation:
  - Early December: Post recruitment
  - Early January: Appointments made
  - Mid February: Commission recommendation
- Provide direction on Charter Adoption and Charter Commission



# City of Menlo Park

## 2017 Districting Initial Hearings

November 29, 2017

# California Voting Rights Act Impact

2

- Switched (or in the process of switching) as a result of California Voting Rights Act challenges:
  - ▣ At least 169 school districts
  - ▣ 32 Community College Districts
  - ▣ More than 77 cities
  - ▣ 1 County Board of Supervisors
  - ▣ 10 water and other special districts.
- Key decisions & settlements
  - ▣ Only Palmdale has gone to trial on the merits (the city lost)
  - ▣ Key settlements:
    - Palmdale: \$4.7 million
    - Modesto: \$3 million
    - Anaheim: \$1.1 million
    - Whittier: \$1 million
    - Santa Barbara: \$600,000
    - Tulare Hospital: \$500,000
    - Madera Unified: about \$170,000
    - Hanford Joint Union Schools: \$118,000
    - Merced City: \$42,000
    - Placentia: \$20,000





# Demographic Summary

**Latinos are 18% of the total population and 12% of the eligible voters (measured by Citizen Voting Age Population counts).**

**African-Americans are 5% of total population, and Asian-Americans are 12%.**

Sources: 2010 Census, California Statewide Database (2012 and 2014 November elections), 2011-2015 American Community Survey Special Tabulation of Citizen Voting Age data, and 2011-2015 American Community Survey data. "Latino" registration and turnout numbers are Spanish-surnamed data adjusted with US Census Population Division's California adjustment factor.

Race/Ethnic Profile	Count	Percent	ACS Profile	Count	Percent
Total Population	32,026		ACS Total Population	32,644	2%
Latino	5,902	18%	Age 0 - 19	8,802	27%
NH White	19,841	62%	Age 20 - 60	18,003	55%
NH Black/ African-American	1,601	5%	Age 60+	5,839	18%
NH Native American	99	0%			
NH Asian-American	3,831	12%	Immigrant	8,103	25%
NH Pacific Islander	470	1%	Naturalized (pct of total immigrants)	3,530	44%
NH Other	83	0%	Age 5+	30,042	
NH Multi-Race	199	1%	Speak English at home	20,374	68%
Voting Age Population total	24,221		Speak Spanish at home	5,013	17%
VAP Latino	3,942	16%	Speak an Asian language at home	1,901	6%
VAP NH White	15,646	65%	Speak other language at home	2,754	9%
VAP NH Black/ African-American	1,283	5%	Speak English only "well" or less	3,331	11%
VAP NH Native American	75	0%	Age 25+	22,380	
VAP NH Asian-American	2,781	11%	Age 25+, no HS degree	1,868	8%
VAP NH Pacific Islander	317	1%	Age 25+, HS degree (only)	5,161	23%
VAP NH Other	53	0%	Age 25+, bachelor degree (only)	6,621	30%
VAP NH Multi-Race	124	1%	Age 25+, graduate degree (only)	8,731	39%
Citizen VAP total	20,317		Households	11,776	
CVAP Latino	2,436	12%	Child under 18 in Household	4,119	35%
CVAP NH White	13,755	68%	Income \$0-25k	1,048	9%
CVAP NH African-American	1,284	6%	Income \$25-50k	1,451	12%
CVAP NH Asian & Pacific Islander	2,734	13%	Income \$50-75k	1,344	11%
CVAP Other	108	1%	Income \$75-200k	4,298	36%
Voter Registration (Nov. 2014)	17,603		Income \$200k+	3,635	31%
Latino Reg	1,722	10%	Housing units	12,447	
Asian-Surnamed Reg.	1,113	6%	Single-Family	7,832	63%
Filipino-Surnamed Reg.	126	1%	Multi-Family	4,615	37%
Est. NH White Reg.	13,516	77%	Vacant	671	5%
Est. African-Amer. Reg	1,140	6%	Occupied	11,776	95%
Democratic Reg.	8,895	51%	Rented	5,206	44%
Republican Reg.	3,581	20%	Owned	6,569	56%
Other/No Party Reg.	5,127	29%			
Voters Casting Ballots (Nov. 2014)	10,199	58%	Voters Casting Ballots (Nov. 2012)	14,450	81%
Latino voters	594	6%	Latino voters	1,189	8%
Asian-Surnamed voters	559	5%	Asian-Surnamed voters	767	5%
Filipino-Surnamed voters	57	1%	Filipino-Surnamed voters	85	1%
Est. NH White voters	8,524	84%	Est. NH White voters	11,577	80%
Est. African-Amer. Reg	472	5%	Est. African-Amer. Reg	828	6%
Democratic voters	5,285	52%			
Republican voters	2,346	23%			
Other/No Party voters	2,569	25%			

# Alternative Elections Systems I

- On October 30, 2017, the City Council reviewed Alternative Election Systems:
- **General Law Cities:**
  1. **At Large** with 5, 7 or 9 members of the Council
    - Mayor can be selected by the voters or by the Council
  2. **By District** with 4, 5, 6, 7, 8 or 9 districts
    - Odd numbers have Mayor selected by the Council, even numbers have at-large elected Mayor
    - Candidates for a district seat must live in the district, and only the voters in the district vote in that district election
  3. **From District** with 4, 5, 6, 7, 8 or 9 districts
    - Odd numbers have Mayor selected by the Council, even numbers have at-large elected Mayor
    - Candidates for a district seat must live in the district, but the election is held city-wide.

## □ Charter Cities Options:

1. **“Instant Runoff”** also known as **“Ranked Choice Voting”**
  - Voters rank candidates. Candidates must receive 50 percent of “live” ballots to win.
  - Elections remain citywide.
  - Used in San Francisco, Oakland and San Leandro.
2. **“Cumulative Voting”** (and **“Limited Voting”**)
  - If two or three seats are up for election, voters get two or three votes, and a voter can group all of his/her votes for a single candidate.
  - Election remains citywide.
  - Used as a Federal Voting Rights Act remedy in Peoria IL and Port Chester NY.

- Only a “By District” system provides a “safe harbor” from a California Voting Rights Act lawsuit.
  - ▣ On October 4, 2017, the City Council adopted a resolution of intention to move to a by-district election system. On October 30, 2017, the City Council directed National Demographics Corporation to prepare mapping tools to allow residents to draw five or six districts.
- Possible approach: move to by-district elections for 2018 and take the time to study alternative options for a future Charter.
  - ▣ On October 30, 2017, the City Council expressed interest in more discussion of a future Charter to allow different election systems.

# Project Timeline

7

Date	Event
October 30	1 <sup>st</sup> hearing: gather public input on the composition of zones
<b>November 29</b>	<b>2<sup>nd</sup> hearing: gather public input on the composition of zones</b>
December	Public Participation Process (to be defined by Council) (Could include an Advisory Districting Committee)
TBD	Draft maps and sequencing released. Must be published at least 7 days prior to 3 <sup>rd</sup> hearing.
TBD	3 <sup>rd</sup> hearing: public input on draft maps and election sequencing
TBD	4 <sup>th</sup> hearing: public input on draft maps and election sequencing Possible map selection and ordinance introduction
TBD	Second reading and final adoption of ordinance
Nov 2018	First by-district election in three districts (and possibly Mayor)
Nov 2020	First by-district elections in remaining districts
2021	Districts redrawn to reflect 2020 Census data

# Traditional Districting Criteria

8

## Federal Laws

- ❑ Equal Population
- ❑ Federal Voting Rights Act
- ❑ No Racial Gerrymandering



## Traditional Criteria

- ❑ Communities of interest
- ❑ Compact
- ❑ Contiguous
- ❑ Visible (Natural & man-made) boundaries
- ❑ Respect for voters' wishes and continuity in office
- ❑ *Planned future growth*

Since the district lines will be redrawn in 2021, after the 2020 Census data are released, future growth is not usually a significant factor in line-drawing this year.

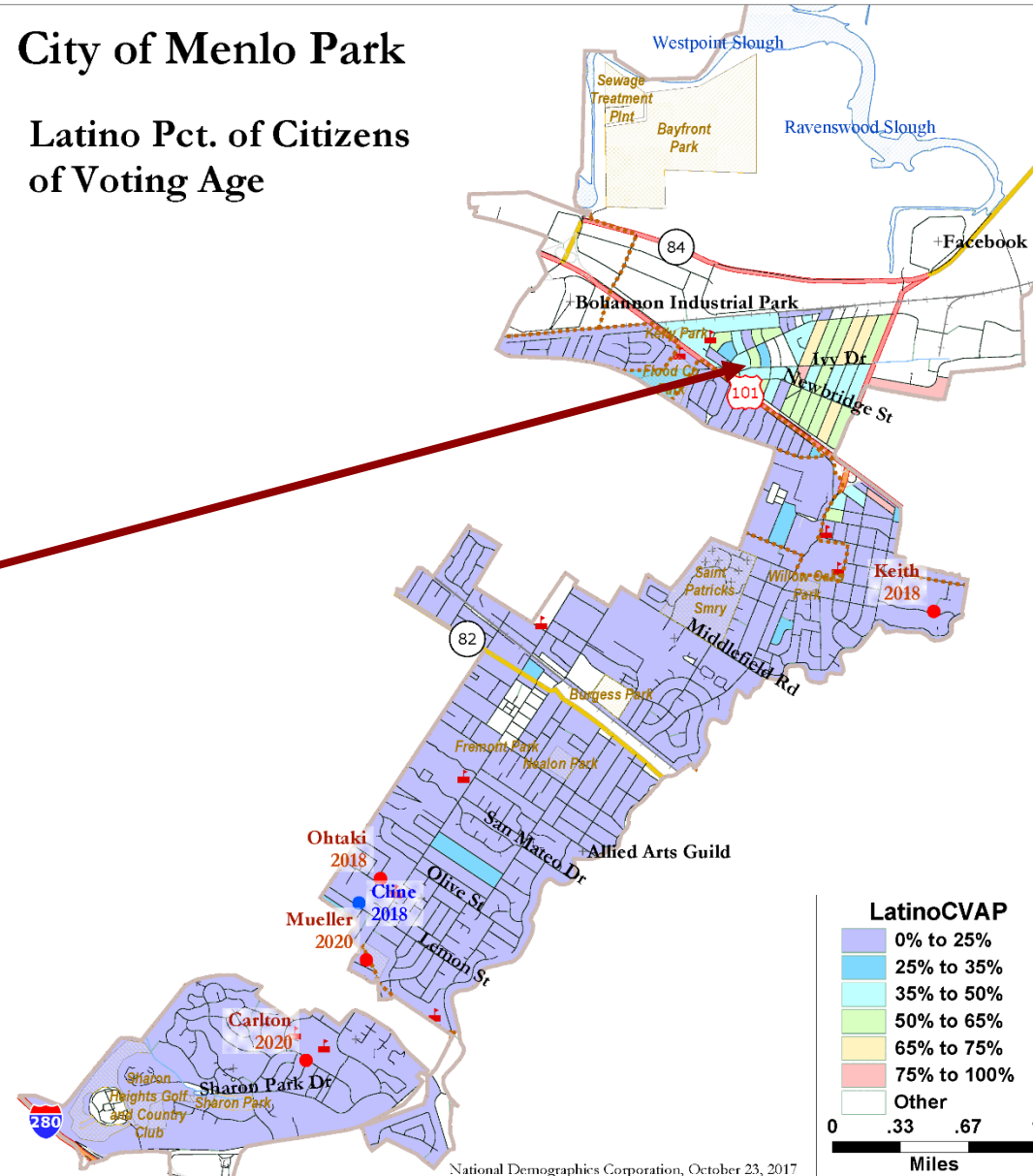
# Latino Citizen Voting Age Population

Citizen Voting Age Population, or CVAP, is the best available measure of the number of eligible voters.

The eligible voters in Belle Haven are 51% Latino, 30% African-American, 10% White, 5% Pacific Islander and 4% other.

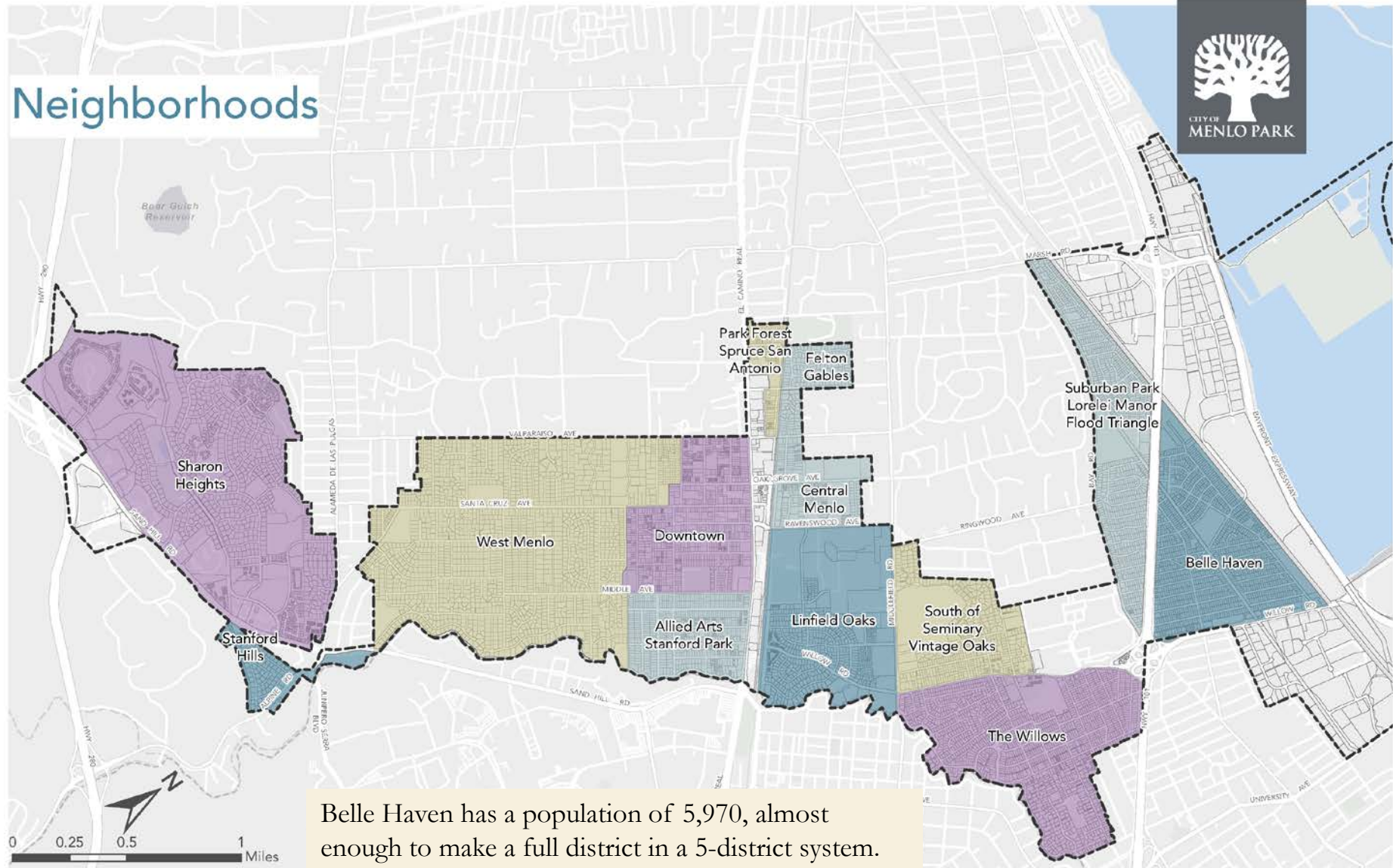
## City of Menlo Park

### Latino Pct. of Citizens of Voting Age





# City Neighborhoods Map



Belle Haven has a population of 5,970, almost enough to make a full district in a 5-district system.



# Defining Communities of Interest

11

## 1<sup>st</sup> Question: what is your neighborhood or community of interest?

**A Community of Interest is generally defined as a neighborhood or community of shared interests, views, problems, or characteristics.**

Possible community feature/boundary definitions include:

- ❑ School attendance areas
- ❑ Natural neighborhood dividing lines, such as highway or major roads, rivers, canals, and/or hills
- ❑ Areas around parks and other neighborhood landmarks
- ❑ Common issues, neighborhood activities, or legislative/election concerns
- ❑ Shared demographic characteristics
  - ▣ Such as similar levels of income, education, or linguistic isolation

**2<sup>nd</sup> Question: Does a Community of Interest want to be united in one district, or to be divided to have a voice in multiple elections?**



- Visit [menlopark.org/districtelections](http://menlopark.org/districtelections) for information about the project and map-drawing tools:
  - Paper-based map-drawing tools
  - Paper-based with a Microsoft Excel Supplemental Kit and supplemental [interactive view map](#).
  - [Online map-drawing tool](#)
- The paper-based tools are also available at City Hall.
- Submit your map at City Hall or by sending it to [MenloPark@NDCresearch.com](mailto:MenloPark@NDCresearch.com)

# Using the Public Participation Kit

13

Group the "Population Units" into 5 or 6 districts. For a 5-district map, the population of each district must be between 6,085 and 6,725. For a 6-district map, the population of each district must be between 5,071 and 5,605.

If you want to divide a Population Unit, note which street(s) you want to use to divide it and NDC will do that for you.

Submit your map at City Hall or by sending it to [MenloPark@NDCresearch.com](mailto:MenloPark@NDCresearch.com)

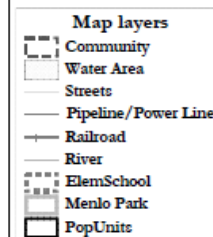
View the PopUnit borders up close on the [Interactive Review Site](#)

## City of Menlo Park 2017 Districting

### Population Units Map

Each number indicates the total population of that "population unit" area. Each district must have essentially equal population. For a 5-district map, the population of each district must be between 6,085 and 6,725. For a 6-district map, the population of each district must be between 5,071 and 5,605.

Please use a thick dark-colored pen to draw your map, then submit it at City Hall or directly to our project consultants:  
[MenloPark@NDCresearch.com](mailto:MenloPark@NDCresearch.com)  
PO Box 5271, Glendale, CA 91221  
You can hand-deliver, mail, fax, scan and email, or photograph and email your map.

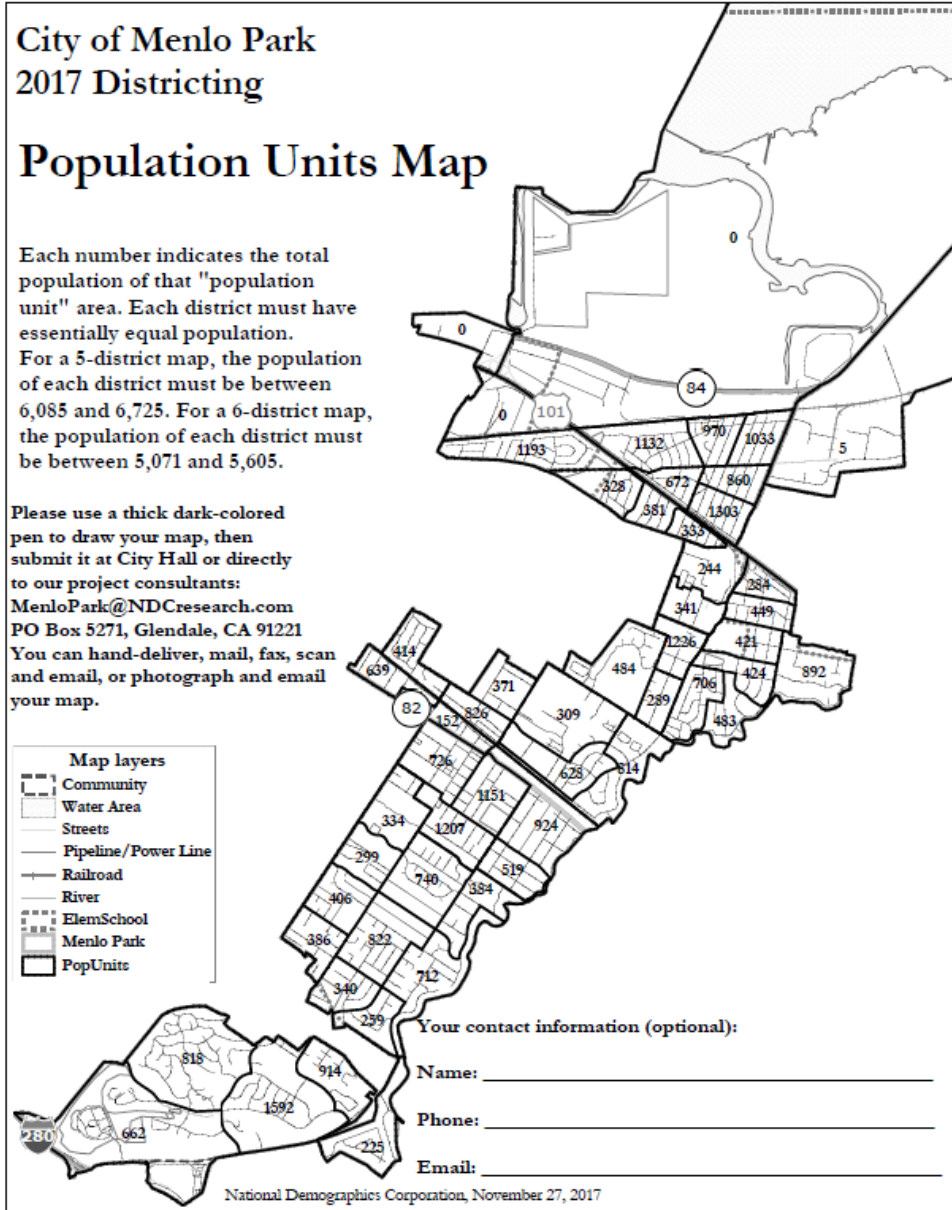


Your contact information (optional):

Name: \_\_\_\_\_

Phone: \_\_\_\_\_

Email: \_\_\_\_\_



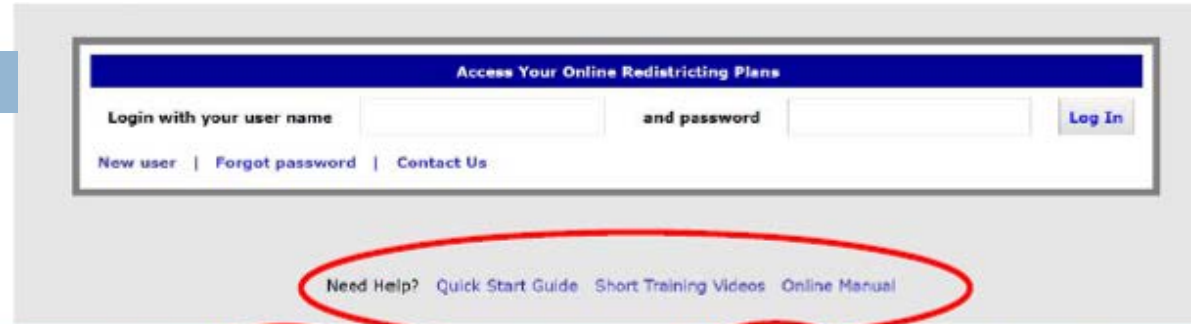
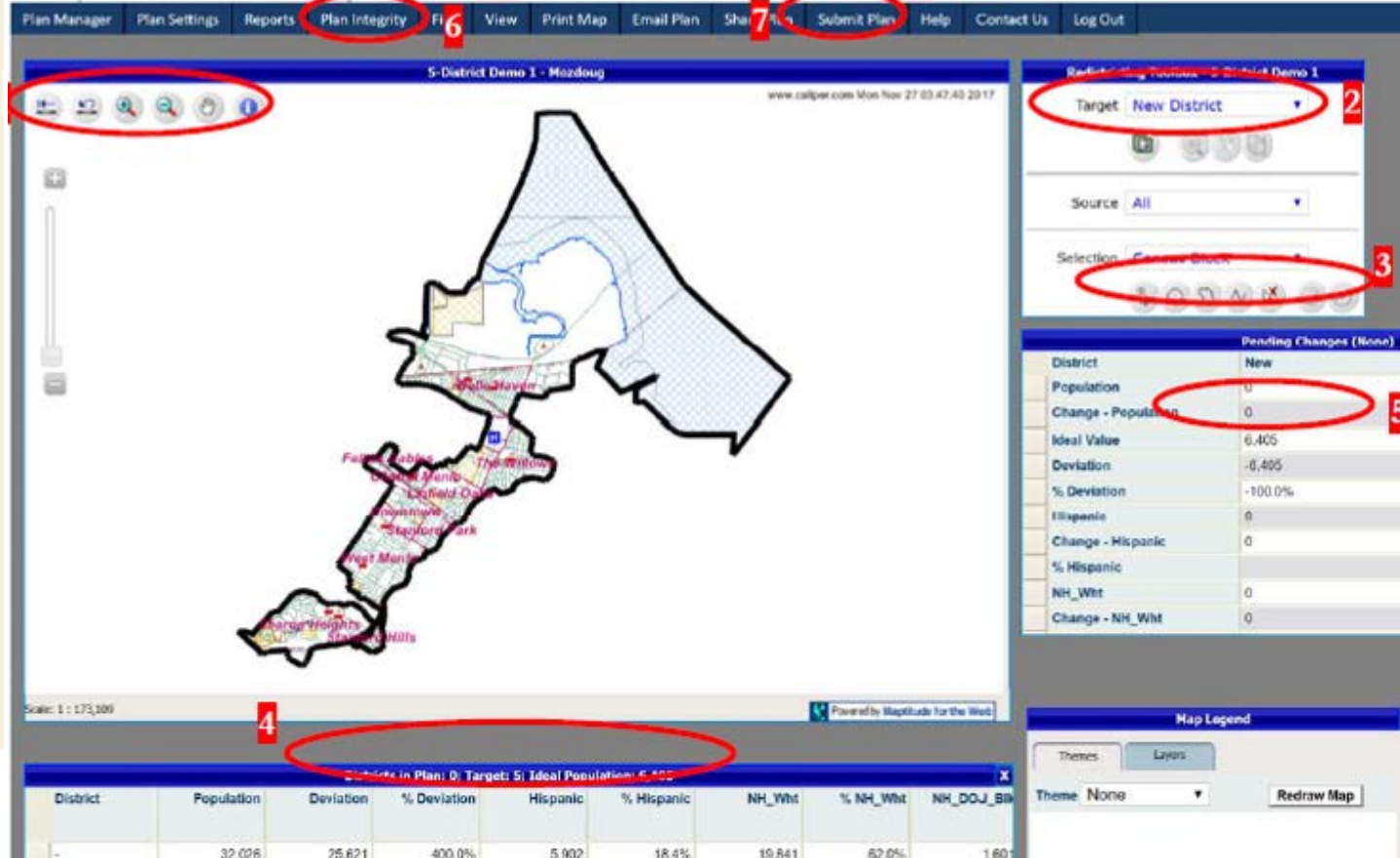
# Using the online tool

14

Tutorials and help resources are available from the login page.

Circled items:

- 1: controls to move around the map;
- 2: choose into which district selected territory will be placed;
- 3: options for how to select territory;
- 4: demographic summary of districts;
- 5: demographic change of currently selected area;
- 6: review map when finished;
- 7: submit map.

Plan Manager | Plan Settings | Reports | **Plan Integrity** | **6** | View | Print Map | Email Plan | **7** | Submit Plan | Help | Contact Us | Log Out

5-District Demo 1 - Mazdoug

Target: New District

Source: All

Selection: Current District

Pending Changes (None)	
District	New
Population	0
Change - Population	0
Ideal Value	6,405
Deviation	-8,405
% Deviation	-100.0%
Hispanic	0
Change - Hispanic	0
% Hispanic	0
NH_Wht	0
Change - NH_Wht	0

District	Population	Deviation	% Deviation	Hispanic	% Hispanic	NH_Wht	% NH_Wht	NH_DOJ_BA
-	32,026	25,621	400.0%	5,902	18.4%	19,941	62.0%	1,601

Scale: 1 : 173,109

Powered by Mapitude for the Web

Districts in Plan: 0 | Target: 5 | Ideal Population: 6,405

Theme: None | Redraw Map

Online map-drawing tool

## Next Steps:

1. Open the public hearing to solicit input on boundaries and communities of interest. Key considerations:
  - ▣ What are other communities of interest in the City that should be considered when drafting maps?
  - ▣ Do you prefer your neighborhood be kept together in one district or have multiple representatives?
2. Consider adopting a resolution establishing a districting committee and discuss qualifications and appointment procedure; and
3. Provide direction on whether to appoint a charter commission.





# STANFORD UNIVERSITY, CENTER FOR ACADEMIC MEDICINE PROJECT

ANNIEBACA FAHBY  
GYMNASIUM

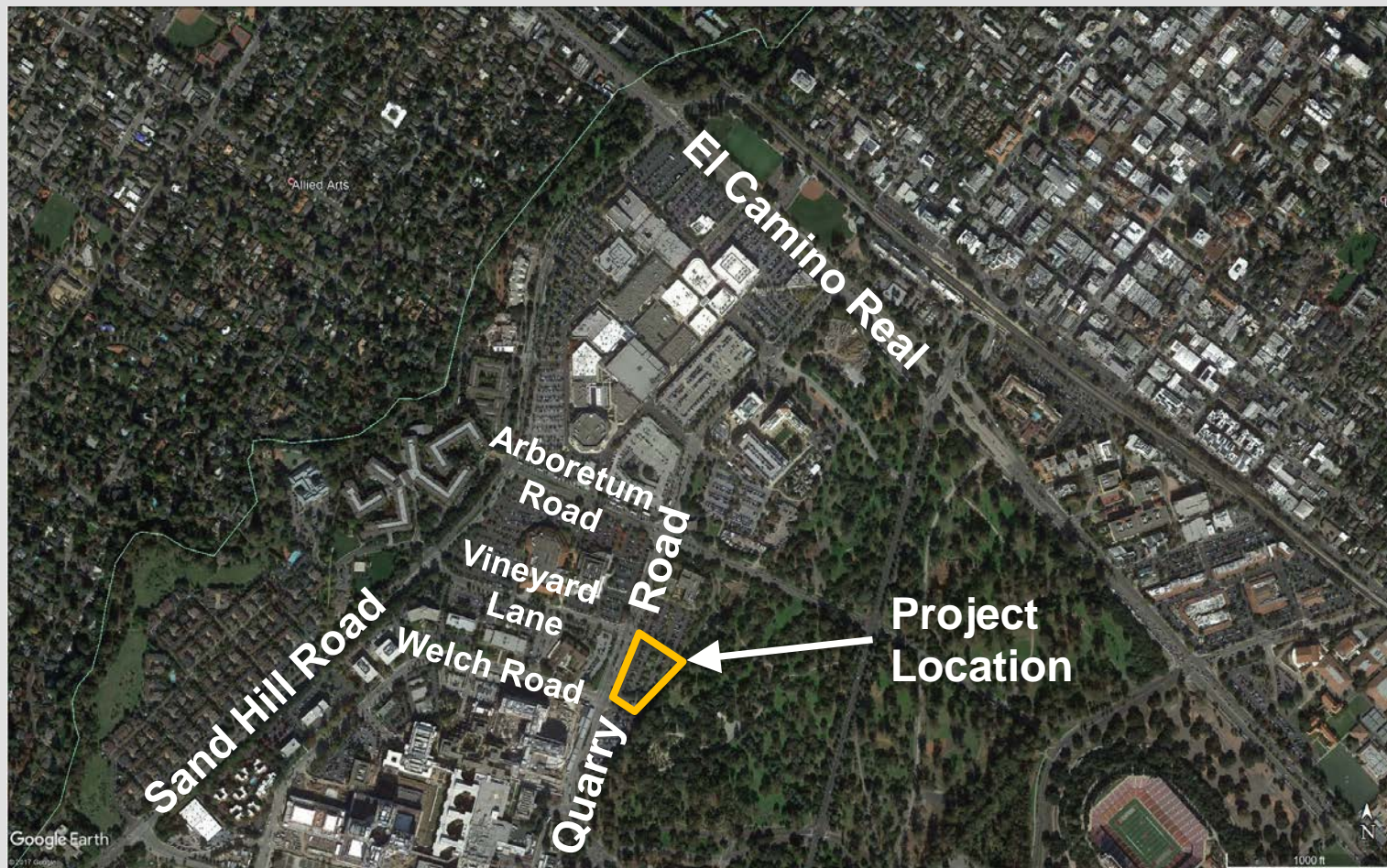


# CENTER FOR ACADEMIC MEDICINE (CAM) PROJECT DESCRIPTION



- 155,000 square-foot academic building
  - Faculty providing patient care across street
  - Clinical research activities
  - Associated staff
- 827 parking spaces
  - 227 existing
  - 600 new
- Shifting 115,000 square-feet of academic building
- No shift in parking









# CENTER FOR ACADEMIC MEDICINE (CAM) PROJECT BACKGROUND



- On Stanford University campus
- 2000 General Use Permit
- Santa Clara County Planning Commission, October 26, 2017
- Menlo Park requested continuance for review
- Item continued to November 16, 2017



# CENTER FOR ACADEMIC MEDICINE (CAM) CURRENT STATUS



- Comment letter authorized November 14, 2017
- City submitted comment letter November 16, 2017
- County Planning Commission consideration November 16, 2017
  - Stanford University submitted response letter
  - Commission voted to approve project
- City concerns about potential unmitigated transportation impacts remain

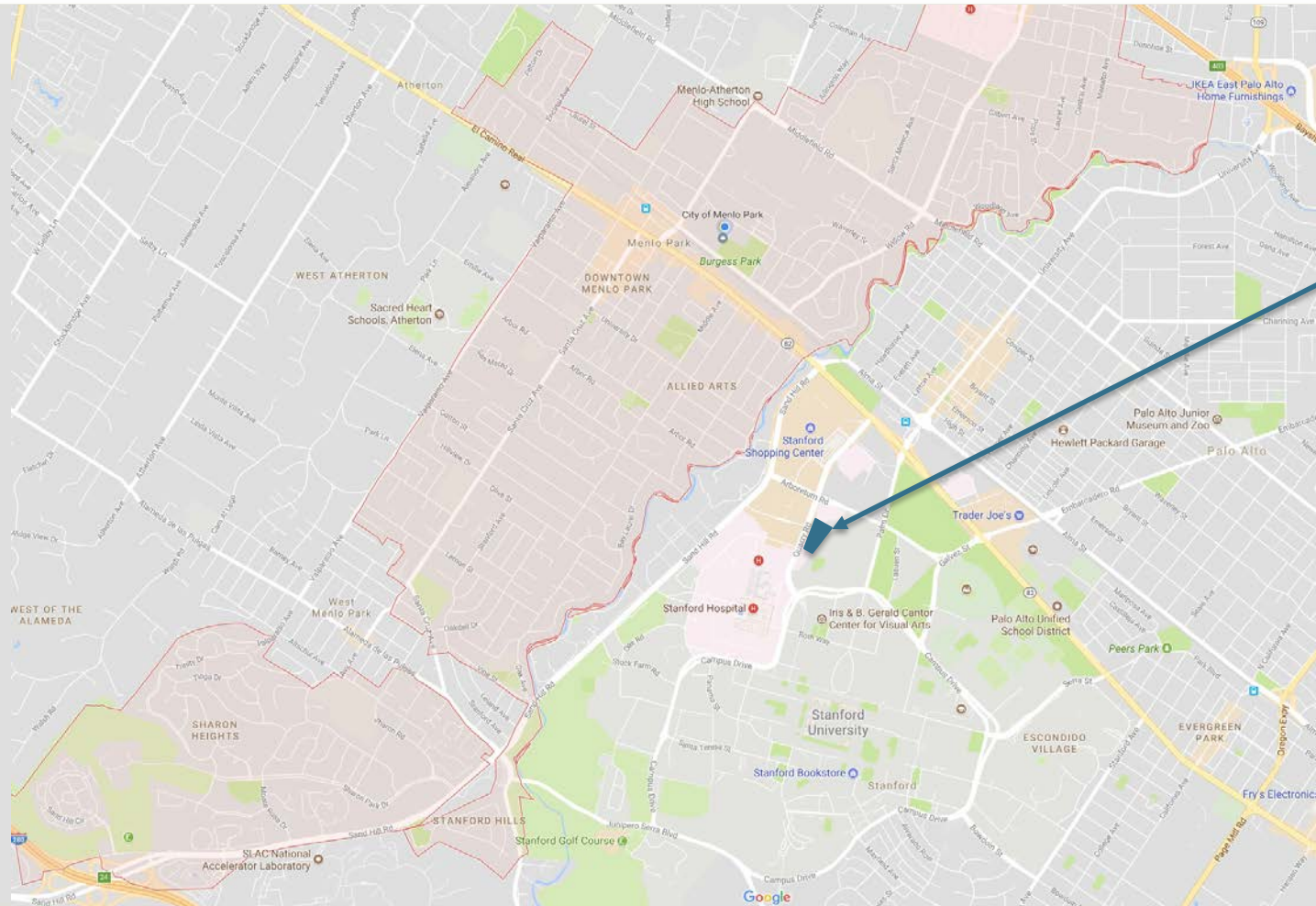
## NEXT STEPS

- Consideration of appeal to County Board of Supervisors
  - Draft appeal letter, Attachment C of staff report
  - Due by December 1, 2017
  - Cost: \$1,359

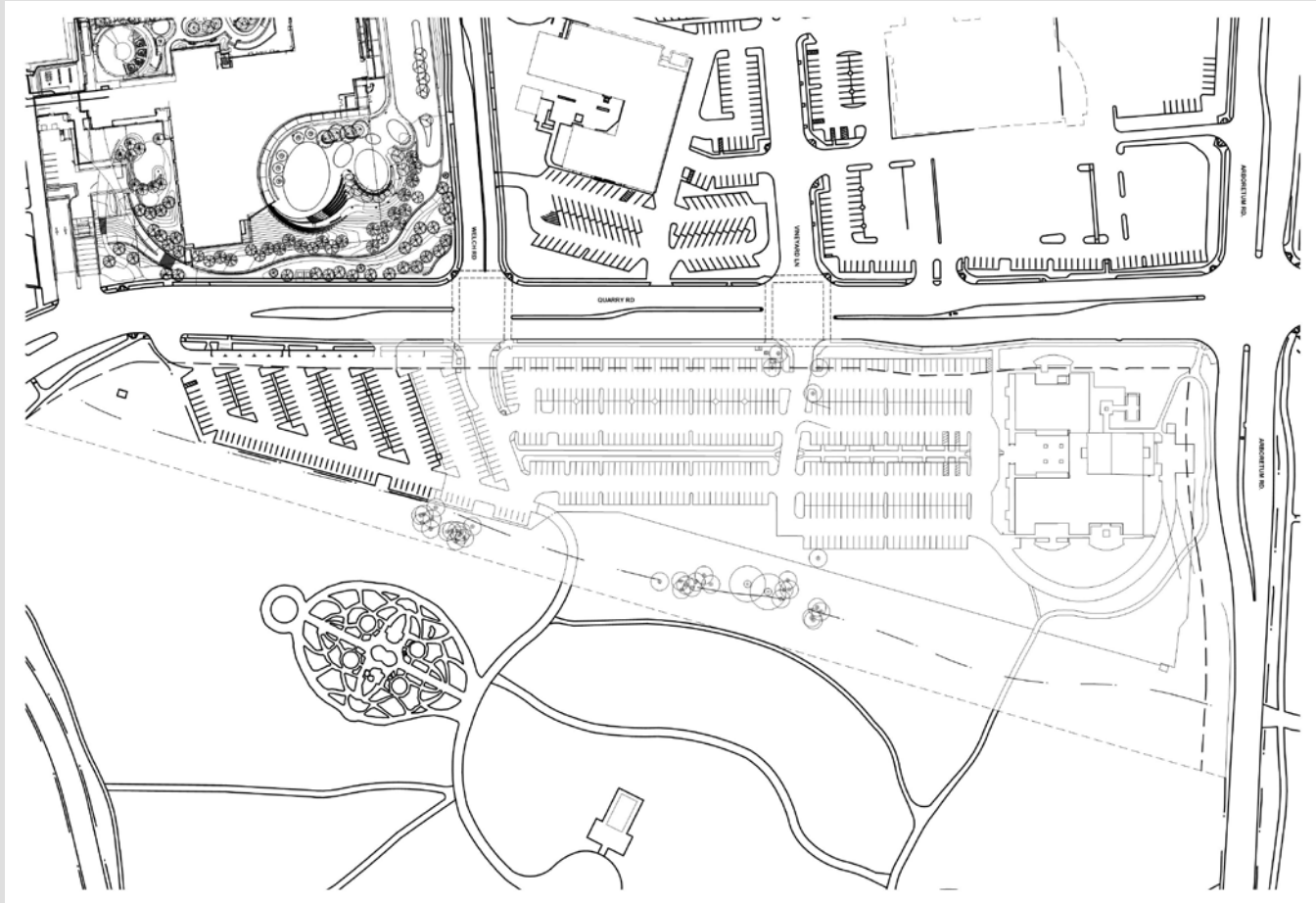


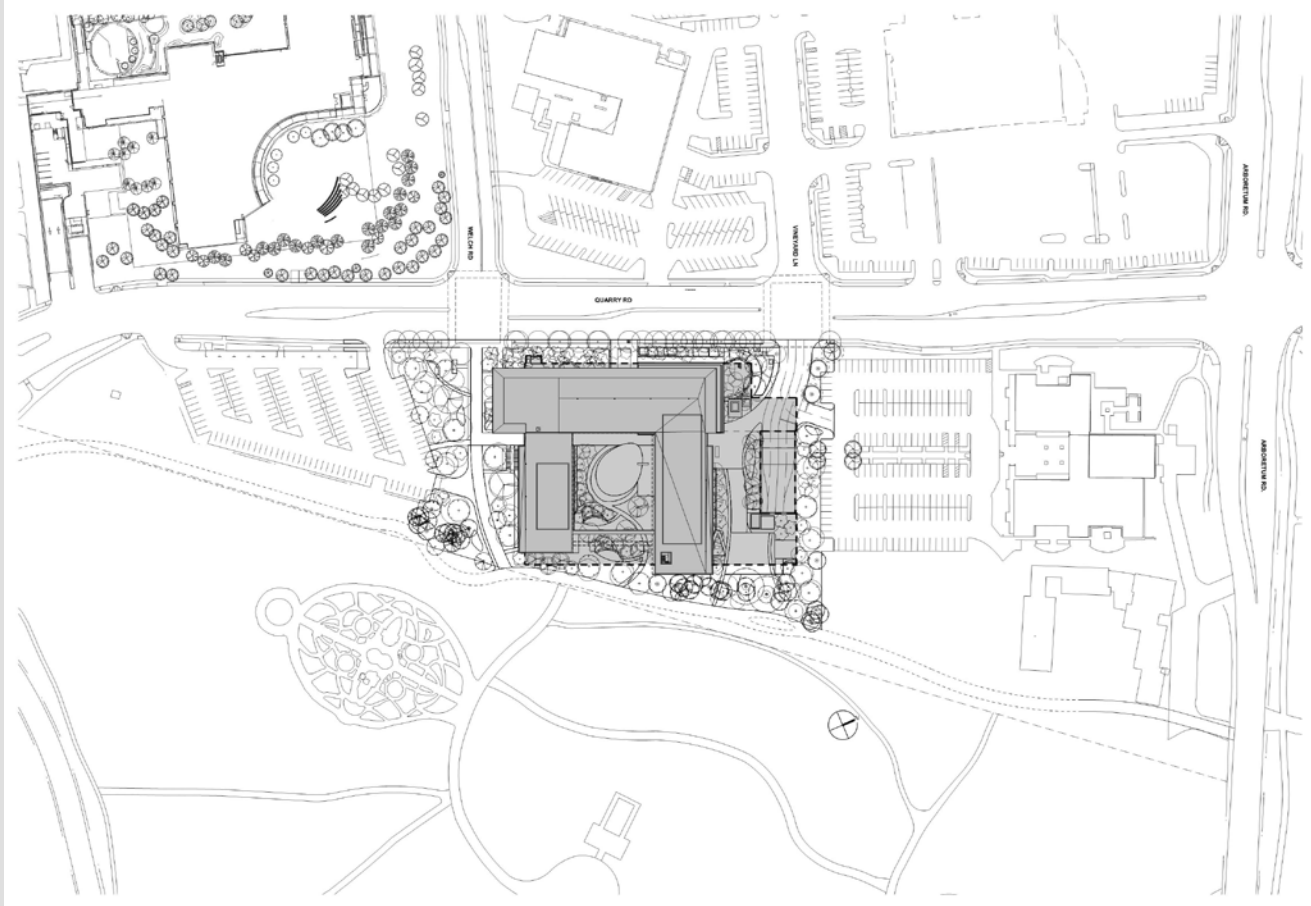
**THANK YOU**

## Project Location









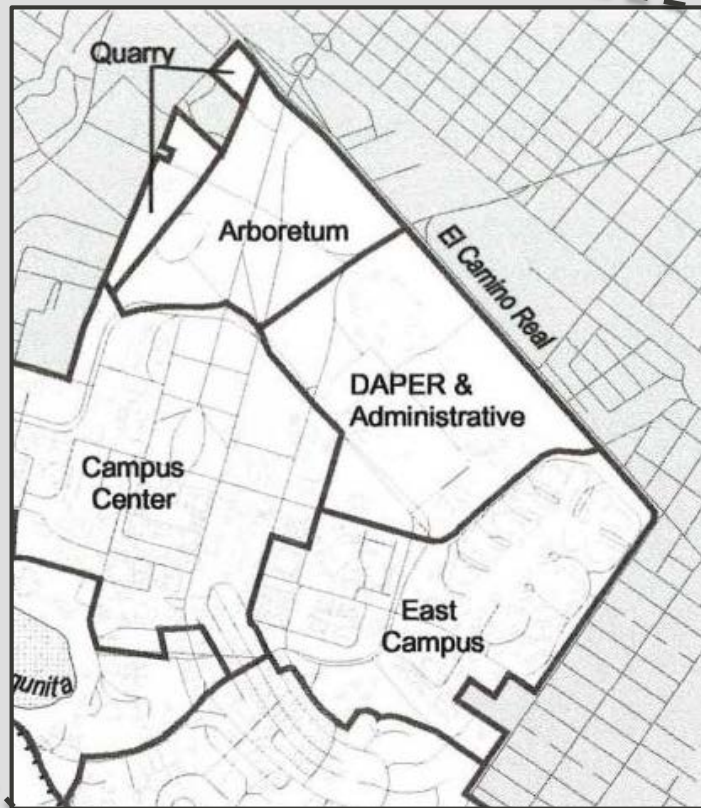
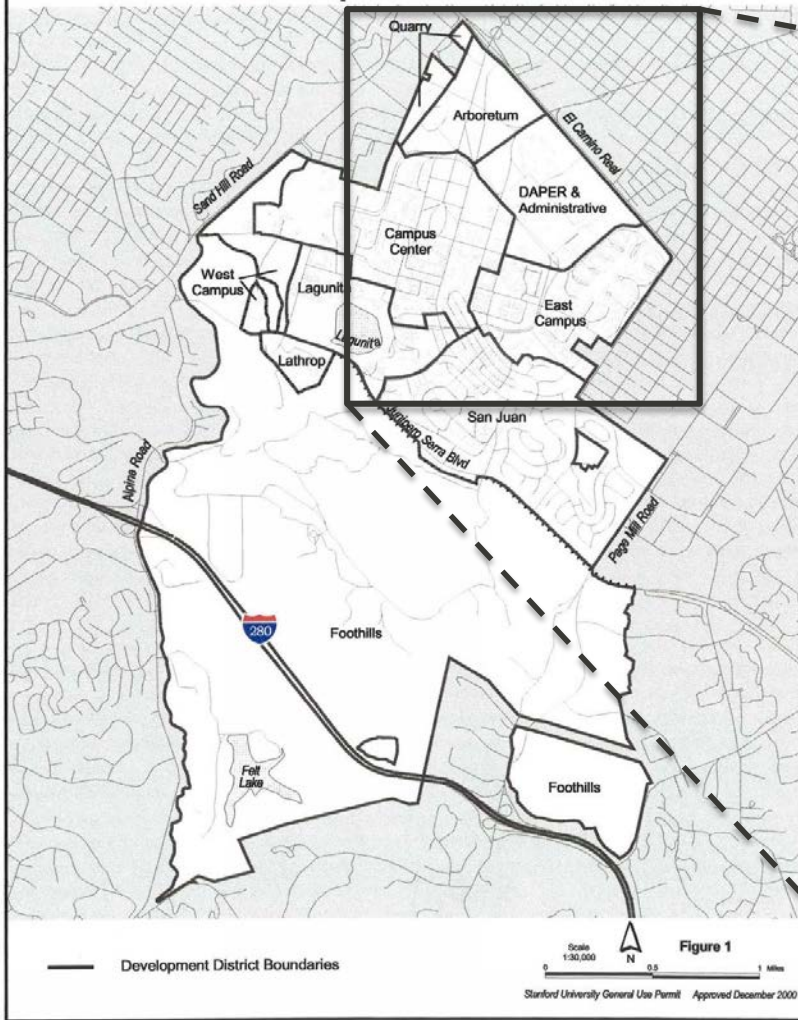




## 2000 GENERAL USE PERMIT (GUP)

- Allocation of building square footage by development district
- Allocation of new parking spaces by development district
- 400+ new parking spaces triggers additional transportation review

# Development Districts



## 2000 GUP PARKING SPACE ALLOTMENT

Development district	Unused 2000 GUP allotment	Proposed with CAM project	Unused 2000 GUP allotment with Project
Quarry	858	600	258
East Campus	44	0	44
West Campus	37	0	37
Lathrop	50	0	50
Foothills	0	0	0
Lagunita	1,140	0	1,140
Campus Center	468	0	468
Arboretum	174	0	174
DAPER & Administrative	850	0	850
San Juan	203	0	203



## ADDITIONAL TRANSPORTATION REVIEW

- GUP EIR Intersection Evaluation
  - Evaluated new parking with unused allotment
- Local Access and Circulation Study
  - Evaluated impacts to adjacent intersections
- Supplemental Evaluation
  - Performed to address potential Menlo Park traffic impacts
- Peer Reviews



## ANALYSIS AND FINDINGS

- New vehicle trips generated by parking spaces
- 2000 GUP EIR analyzed trips generated within parking allotments
- Project does not exceed 2000 EIR analyzed trips
- Traffic impacts from Project included in 2000 GUP EIR
- Existing counts less than 2000 GUP projected

## COMMENT LETTER

- Develop notification process
- Concerns with process
  - Parking spaces generate trips
  - Shifting of building square-footage
  - Changes could be completed administratively
- Anticipate similar comments on 2018 GUP DEIR

## CITY COUNCIL ACTION REQUESTED

- Comment letter
  - Review
  - Provide comments
  - Authorize submittal on November 16, 2017

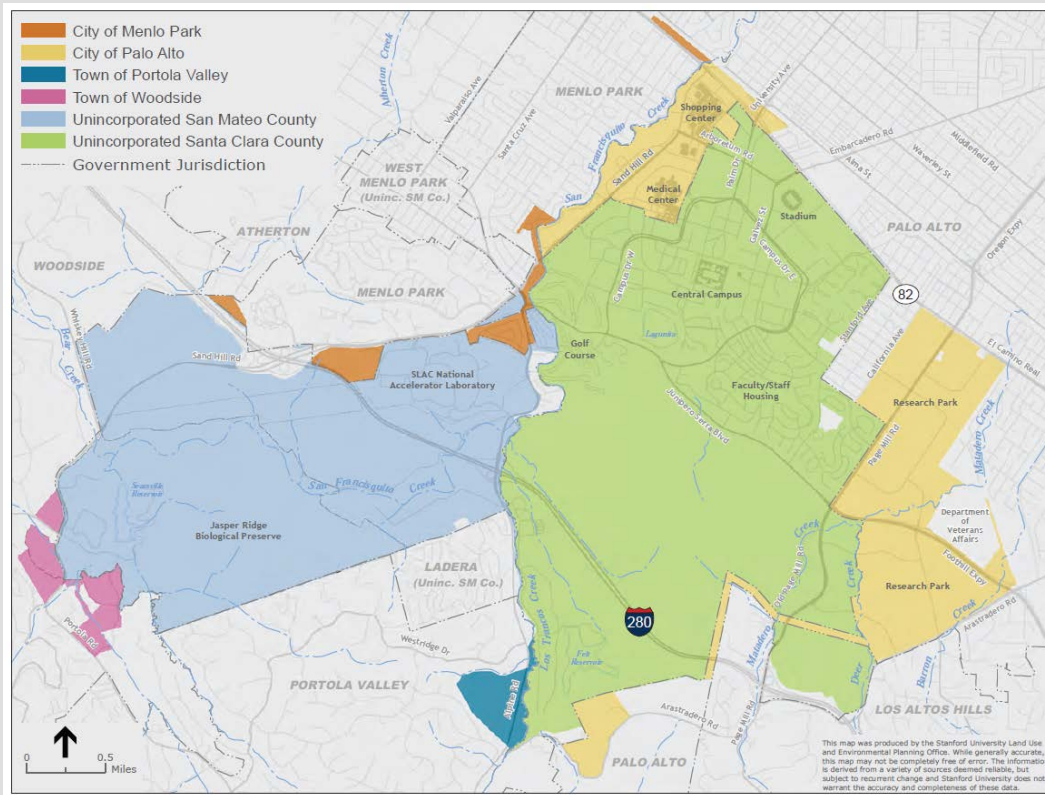


# STANFORD UNIVERSITY 2018 GENERAL USE PERMIT

ANNIEBORG FAHMY  
GYMNASIUM



# MAP OF STANFORD LANDS



Source: DEIR, Figure 3-2





# 2018 GENERAL USE PERMIT PROJECT OVERVIEW

	Academic and Support Uses	Student Beds	Faculty/Staff Housing Units
Existing Built Area (Fall 2015)	9.6 MSF	11,293	937
2000 GUP Allowances Remaining (Fall 2015)	1.54 MSF		2,852
2018 GUP Proposal	2.275 MSF	2,600	550

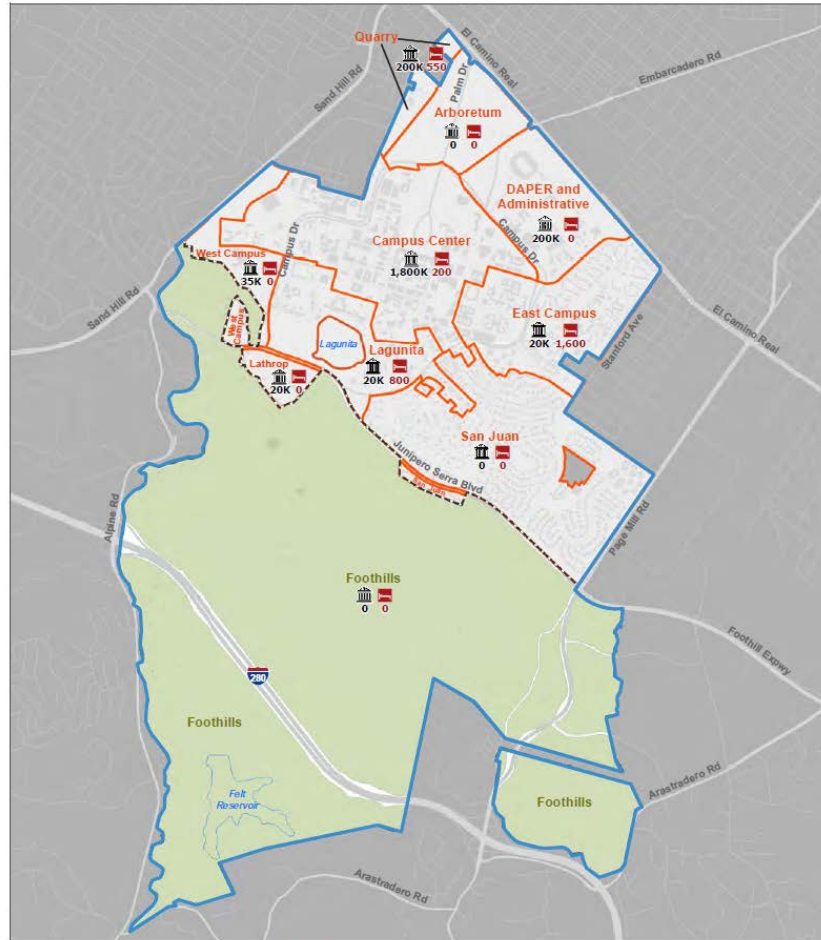
## 2018 GENERAL USE PERMIT CEQA OVERVIEW

- Santa Clara County is Lead Agency
- Stanford submitted application in November 2016
- Notice of Preparation of Environmental Document
  - Released January 3, 2017
  - Presentation to Menlo Park City Council on February 28, 2017
  - City comment letter submitted March 6, 2017
- Release Draft EIR on October 6, 2017
  - Program-level document
  - 60-day comment period, closes December 4, 2017
  - City requested 60-day extension
  - Working as though 12/4 deadline stands

# MAP OF PROPOSED DEVELOPMENT



	Academic and Support Uses	Student Beds	Faculty/ Staff Housing Units
2018 GUP Proposal	2.275 MSF	2,600	550



Source: DEIR, Figure 3-8

## DEVELOPMENT OF DRAFT COMMENT LETTER

- Staff review of Draft EIR and associated materials
- Subcommittee input
- Meeting with Stanford University representatives (staff and Subcommittee)
- County staff presentation to City Council 10/17
- City staff attendance at County hearings on 10/28 and 11/14 (confirm dates!)
  
- *Requesting revisions and recirculation of DEIR*

## KEY COMMENT TOPICS

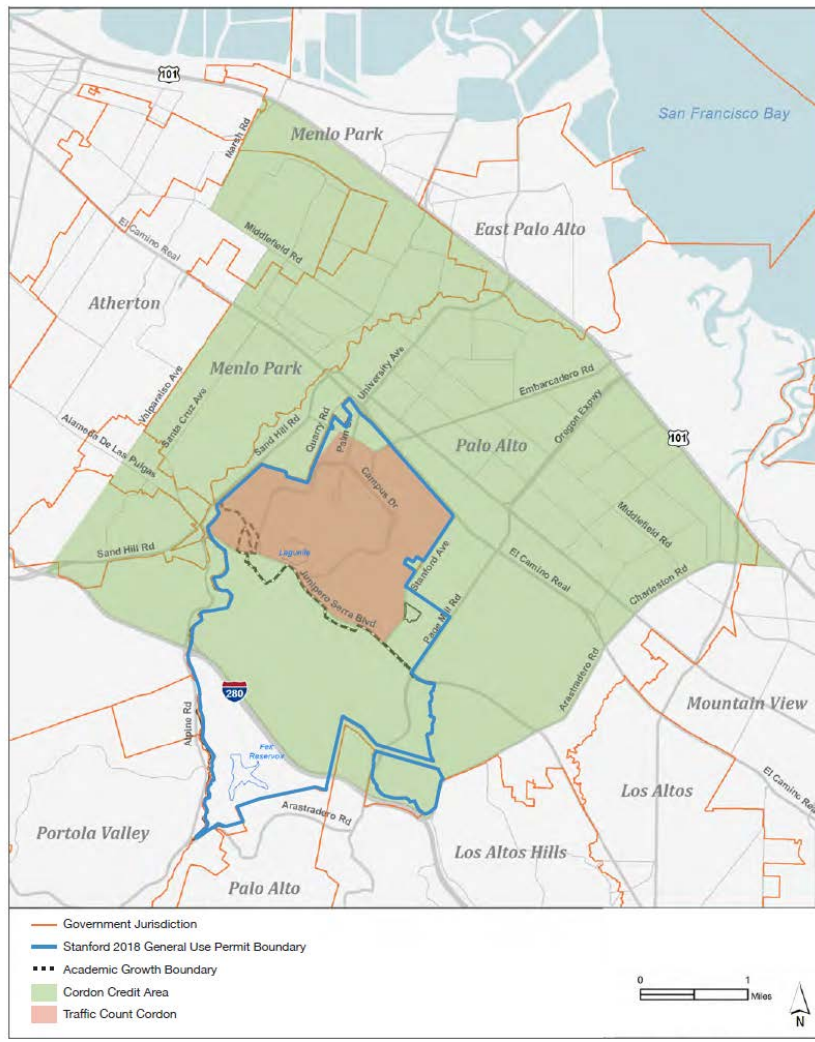
- Process
  - “Flexibility with Accountability” approach
  - Academic Growth Boundary preservation
  - Maximum buildout levels and timing not well-defined
  - Reiterating NOP comments not addressed
- Housing
  - Impact fee is not sufficient
  - Property tax exemption
  - Demand generated that is not accommodated on-campus
- Hydrology and Water Quality
  - Downstream flooding and on-site storage
- Air Quality and Noise
- Transportation
  - Existing analysis does not reflect actual congestion levels
  - Proposed mitigation measures not complete
  - No Net New Commute Trips concerns



# NO NET NEW COMMUTE TRIPS

- Peak spreading
- Reverse commute traffic levels
  - Lacking analysis of impacts and mitigation measures
- Infrequent monitoring
- Payment of fees towards mitigation measures identified is not sufficient to actually mitigate the impacts

Source: DEIR, Figure 3-10



## CITY COUNCIL ACTION REQUESTED

- Authorize submittal of comment letter
  - Pending information about a possible 60-day extension



**THANK YOU**