

San Francisquito Creek Joint Powers Authority

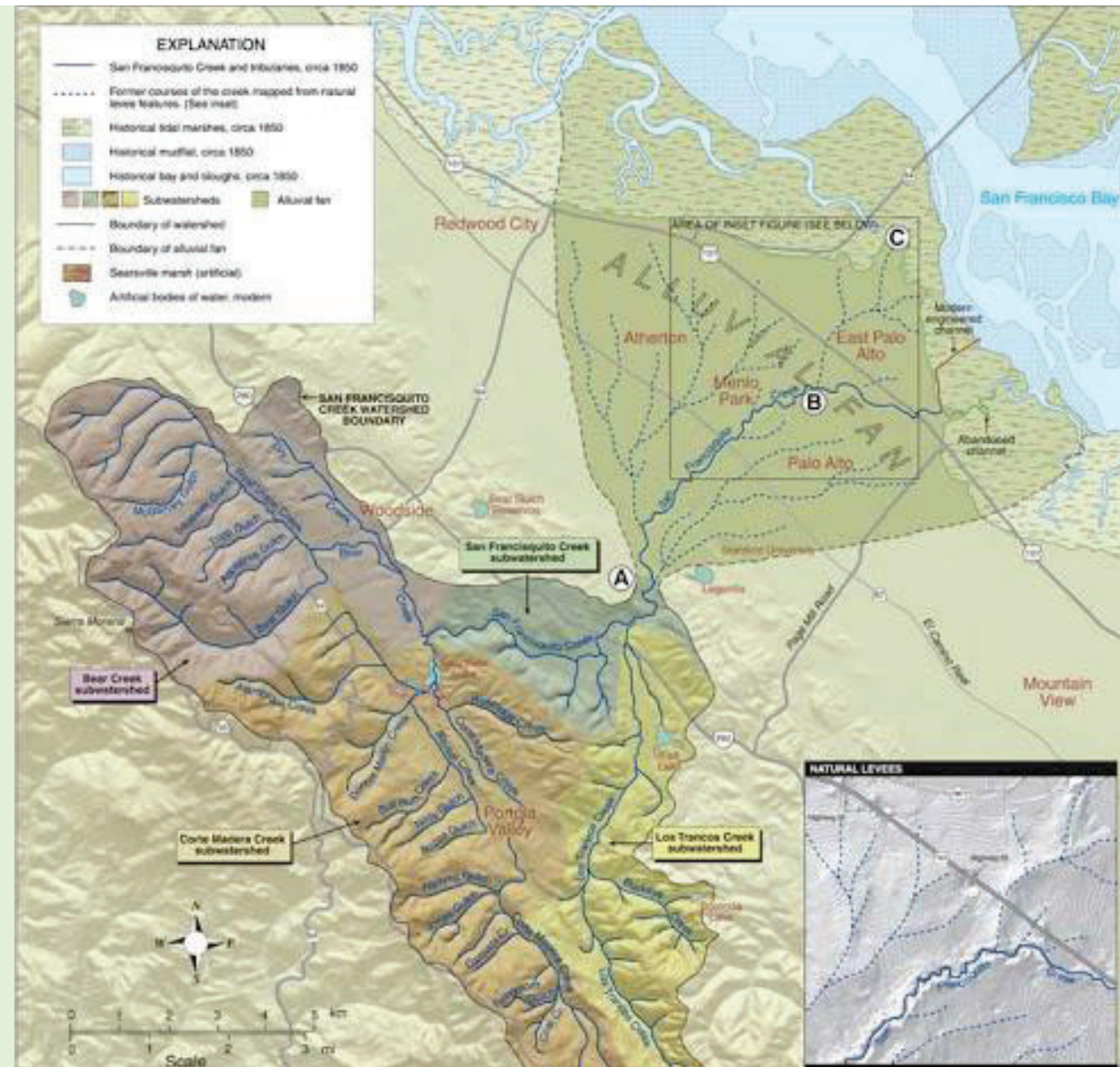
- Formed in 1999/2000 after the flooding of 1998
- Made up of 5 constituent organizations:
 - Valley Water
 - City of Palo Alto
 - City of East Palo Alto
 - City of Menlo Park
 - OneShoreline (San Mateo County Flood and SLR Resiliency District)
- Four full-time staff:
 - Margaret Bruce, Executive Director
 - Miyko Harris-Parker, Administrative and Finance Manager, Clerk of the Board
 - Tess Byler, Sr. Project Manager
 - Denean Ni, Project Manager

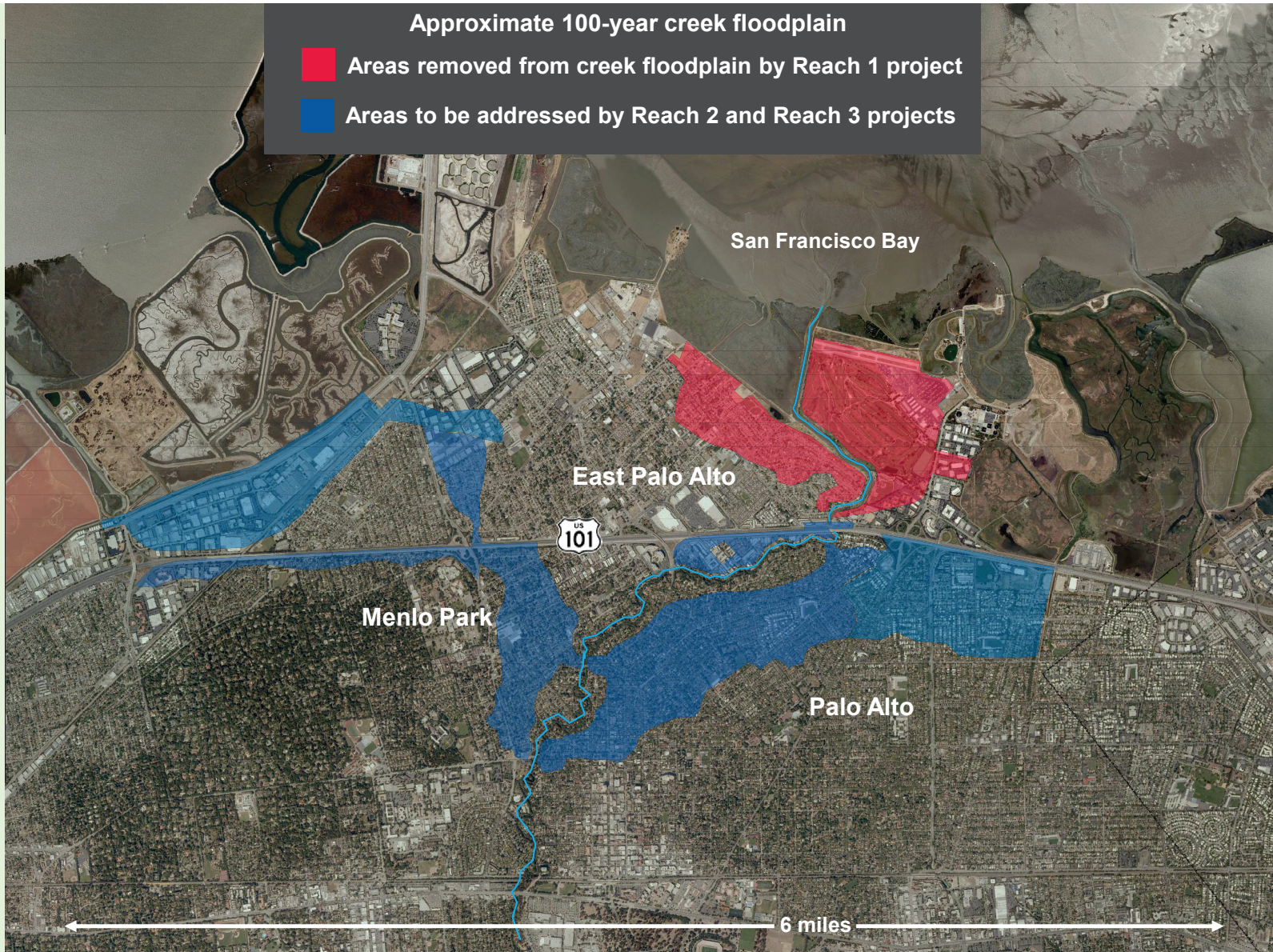


SFCJPA.ORG

The San Francisquito Creek Watershed

- The SFC watershed is about 45 square miles and crosses the San Andreas Fault zone, where loose and broken rock and soil is easily eroded and carried downstream.
- As the creek crosses the urbanized area of the valley – its course is at the high point on its alluvial fan.





Reach 1 (Downstream Project)

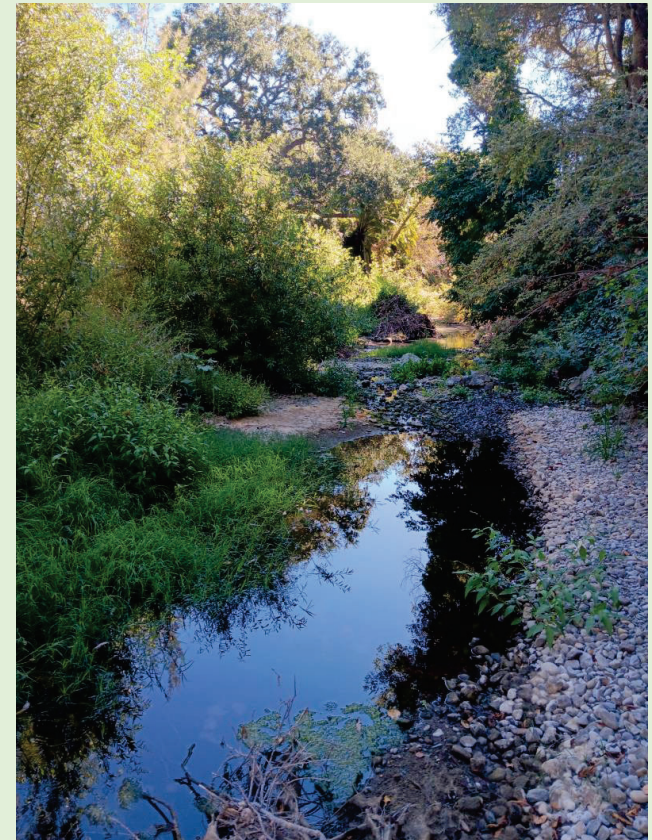
- Broke ground in 2016 – Completed in 2019
- 1 ½ Miles of widened channel, new floodwalls and levees, expanded trail
- Over 9000 cfs capacity – planned for 100yr storm, plus 3 ½ feet of sea level rise, plus freeboard
- 22 Acres of restored marsh between the levees and beyond Friendship Bridge
- Protects East Palo Alto and eastern Palo Alto directly. Protects Menlo Park and Palo Alto indirectly.



Source: SFCJPA

Reach 2 (Urban Reach Project)

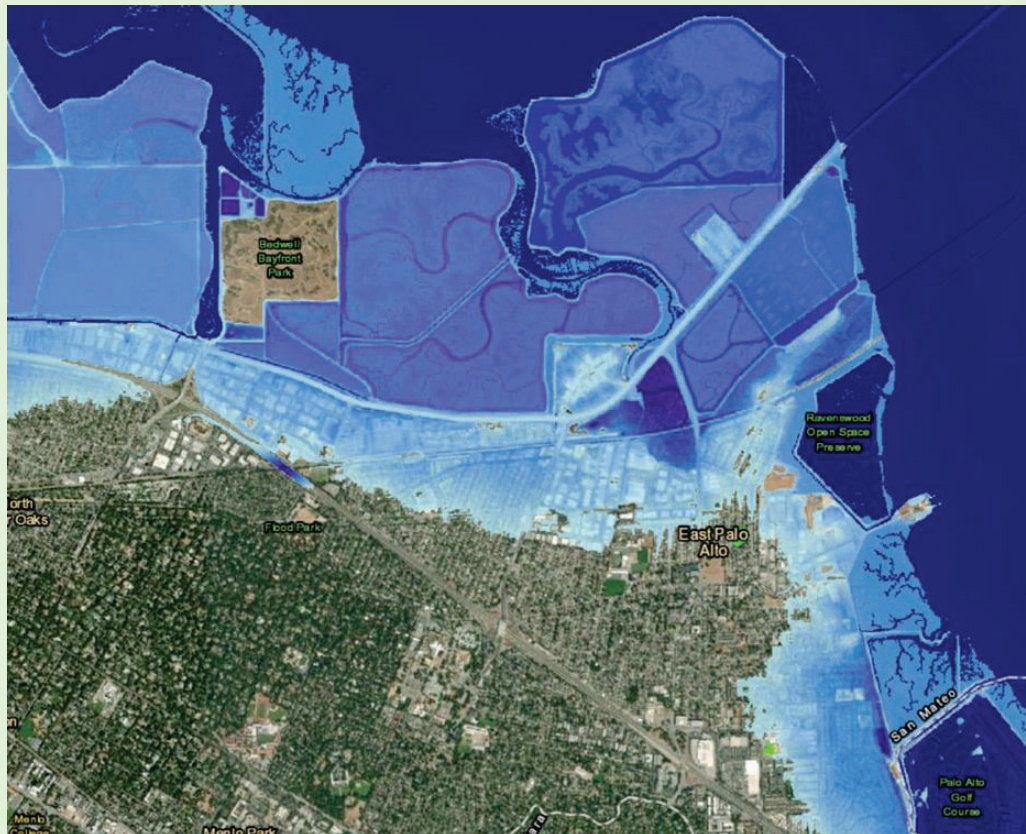
- Re-Evaluated Project after NYE flooding.
 - 25% less channel capacity than we knew before
 - Still aiming for “70-year flow” in-channel capacity
- SFCJPA May board meeting will include a presentation of the range of Project Alternatives, their costs, implementation order, and other attributes.
- Project Alternatives will include various combinations of channel widening, floodwalls, bridge modifications, and other possible interventions.
- After the SFCJPA Board has selected their preferred Project Alternative – by June - the SFCJPA members can begin project funding discussions.



Source: SFCJPA

SAFER Bay Overview

Strategy to Advance Flood Protection, Ecosystems and Recreation



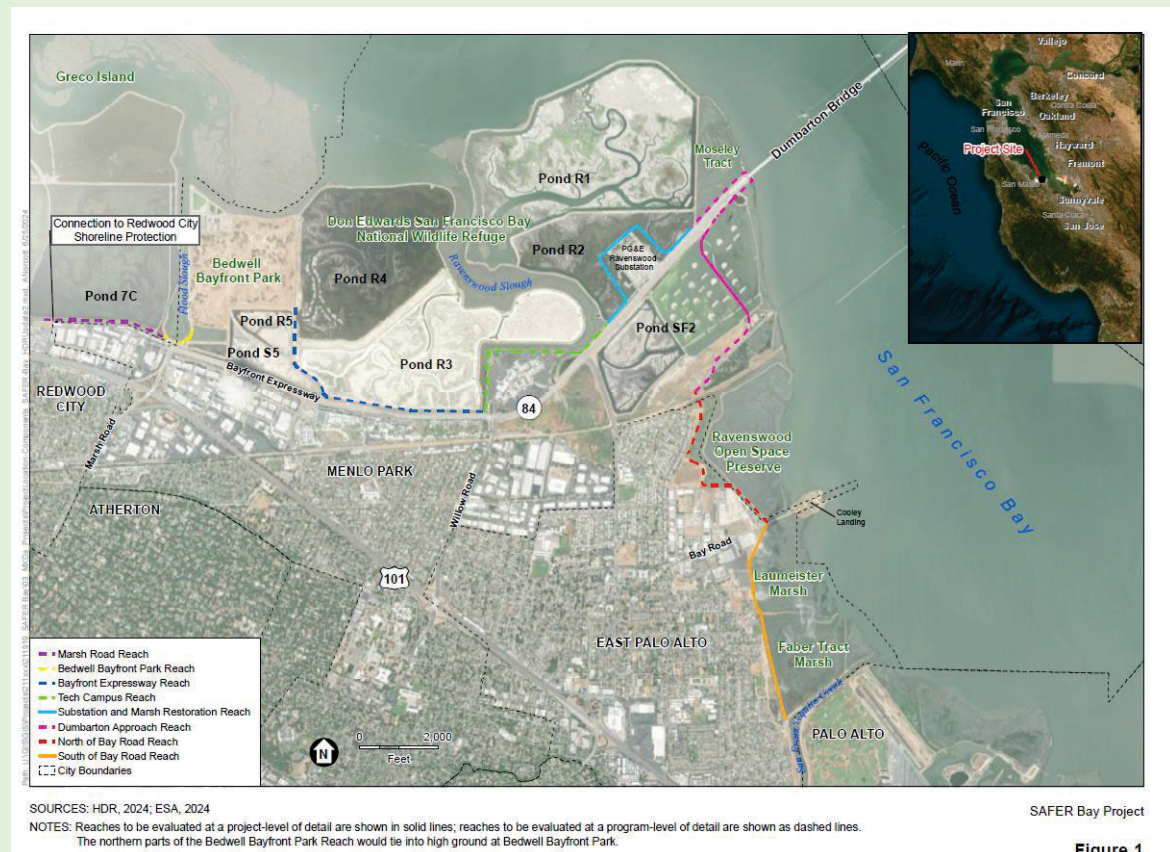
Source: NOAA sea level rise viewer – 100-yr coastal flood & three feet of projected sea level rise

Overarching Goals:

- Nature-based flood protection and restoration of former marshes
- Protect properties and critical infrastructure
- Increase recreational opportunities

Project Process and Schedule

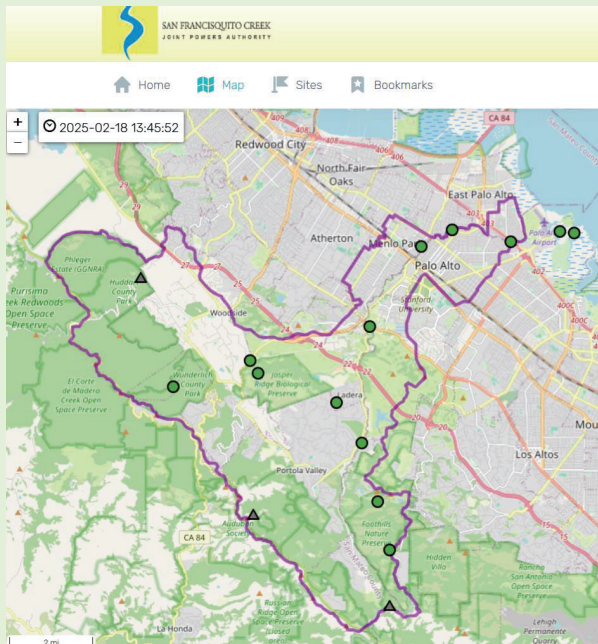
- 7+ mile shoreline of East Palo Alto and Menlo Park.
- Consistent with Reach 1, planning for 10' of protection: SLR, 100yr storm, + FEMA freeboard.
- A complex project involving equity priority communities, major infrastructure, critical habitat for endangered species, urban renewal opportunities, recreation, historical and sacred lands, and many federal, state and local agencies.
- SFCJPA deeply engaged with local CBOs.
- Draft Programmatic EIR to be complete at end of 2025.



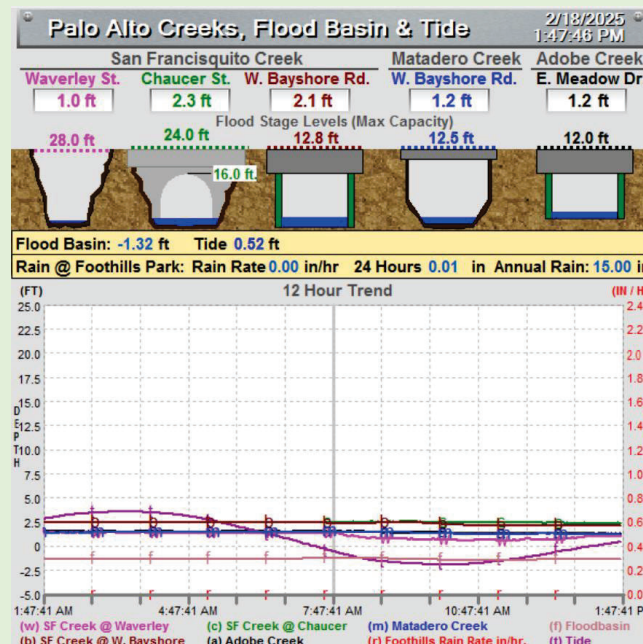
SAFER Bay Project Funding

- SFCJPA – Leading on CEQA and project permits.
 - Grants from the Department of Water Resources and SFBRA totaling ~\$6M are enabling CEQA
- Menlo Park – FEMA BRIC Grant
 - \$50M in phases
 - Local match from PG&E (\$10M and Meta \$7M)
 - Menlo Park leading on BRIC implementation.
- East Palo Alto – CalOES HMGP Grant
 - \$17.5M in phases.
 - Local match from East Palo Alto (\$5M)
 - East Palo Alto leading on HMGP implementation.
- Community Advisory Committee
 - SFCJPA has engaged two local CBOs to lead outreach and coordinate community engagement.

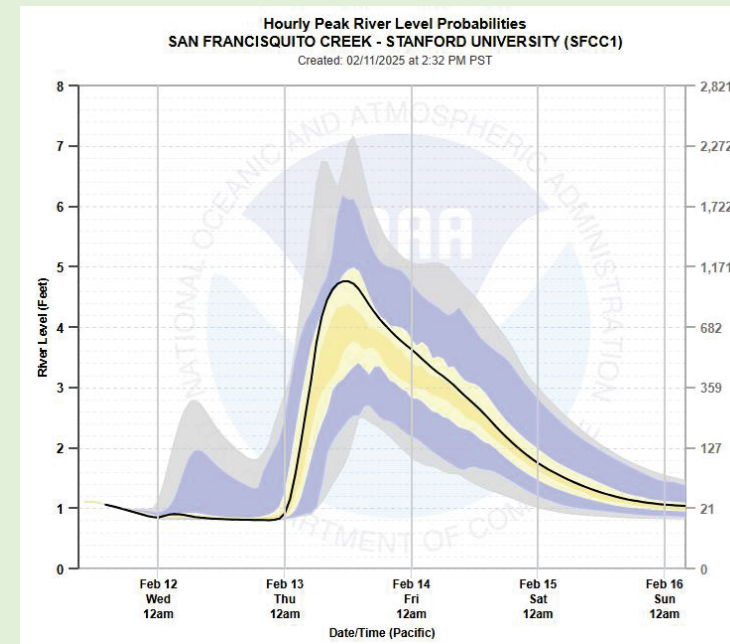
Watershed Monitoring and Flood Early Warning Coordination with our Members



SFCJPA Website Rain and Streamflow Gages



City of Palo Alto Creek Monitor & Camera



NOAA California Nevada River Forecast Center

Thank you

Any Questions?

Feel free to contact me:

mbruce@sfcjpa.org

