

Complete Streets Commission



REGULAR MEETING AGENDA

Date: 11/14/2018
Time: 7:00 p.m.
City Council Chambers
701 Laurel St., Menlo Park, CA 94025

A. Call To Order

B. Roll Call

C. Reports and Announcements

Under “Reports and Announcements,” staff and Commission members may communicate general information of interest regarding matters within the jurisdiction of the Commission. No Commission discussion or action can occur on any of the presented items.

D. Public Comment

Under “Public Comment,” the public may address the Commission on any subject not listed on the agenda. Each speaker may address the Commission once under Public Comment for a limit of three minutes. Please clearly state your name and address or political jurisdiction in which you live. The Commission cannot act on items not listed on the agenda and, therefore, the Commission cannot respond to non-agenda issues brought up under Public Comment other than to provide general information.

E. Regular Business

- E1. Approve the Complete Streets Commission regular meeting minutes of October 10, 2018 ([Attachment](#))
- E2. Approve the installation of red curb and removal of three parallel on-street parallel parking spaces on Chrysler Drive just south of Constitution Drive ([Staff Report #18-012-CSC](#))
- E3. Recommend a strategy to City Council to reinforce no parking on Santa Cruz Avenue bike lanes between Johnson Street and Arbor Road
- E4. Discuss and recommend to City Council potential Middle Avenue bike lane improvements from the Active Transportation Network Subcommittee

F. Informational Items

- F1. Assess Complete Streets Commission Pilot Program
- F2. Update on major project status

G. Committee/Subcommittee Reports

- G1. Update from Active Transportation Network Subcommittee (Behroozi/Kirsch/Nash/Weiner)

- G2. Update from Electric Vehicle Subcommittee (Meyer/Nash/Walser)
- G3. Update from Downtown Access and Parking Subcommittee (Behrooz/Levin/Nash)
- G4. Update from Multimodal Subcommittee (Levin/Walser)
- G5. Update from Placemaking and Outreach Subcommittee (Lee/Meyer)
- G6. Update from Safe Routes to School Program Subcommittee (Lee/Mazzara/Walser/Meyer)
- G7. Update from Transportation Master Plan Subcommittee (Behrooz/Levin/Nash)

H. Adjournment

At every Regular Meeting of the Commission, in addition to the Public Comment period where the public shall have the right to address the Commission on any matters of public interest not listed on the agenda, members of the public have the right to directly address the Commission on any item listed on the agenda at a time designated by the Chair, either before or during the Commission's consideration of the item.

At every Special Meeting of the Commission, members of the public have the right to directly address the Commission on any item listed on the agenda at a time designated by the Chair, either before or during consideration of the item.

Any writing that is distributed to a majority of the Commission by any person in connection with an agenda item is a public record (subject to any exemption under the Public Records Act) and is available for inspection at the City Clerk's Office, 701 Laurel St., Menlo Park, CA 94025 during regular business hours.

Persons with disabilities, who require auxiliary aids or services in attending or participating in Commission meetings, may call the City Clerk's Office at 650-330-6620.

Agendas are posted in accordance with Government Code Section 54954.2(a) or Section 54956. Members of the public can view electronic agendas and staff reports by accessing the City website at menlopark.org/agenda and can receive e-mail notification of agenda and staff report postings by subscribing to the "Notify Me" service at menlopark.org/notifyme. Agendas and staff reports may also be obtained by contacting the City Clerk at 650-330-6620. (Posted: 11/8/2018)

Complete Streets Commission



REGULAR MEETING MINUTES - DRAFT

Date: 10/10/2018
Time: 7:00 p.m.
City Council Chambers
701 Laurel St., Menlo Park, CA 94025

A. Call to Order

Chair Kirsch called the meeting to order at 7:02 p.m.

B. Roll Call

Present: Behroozi, Kirsch, Lee, Levin, Mazzara, Meyer (excused from meeting at 9:33 p.m.), Nash, Weiner
Absent: Walser
Staff: Associate Transportation Engineer Kevin Chen, Junior Engineer Marlon Aumentado, Senior Transportation Engineer Kristiann Choy
Consultant: Alta Planning + Design, Inc.

C. Reports and Announcements

Staff Chen announced upcoming City events. Lee announced that October 10 was International Walk and Roll to School Day. Levin announced that Caltrain is updating their business plan and will conduct future community meetings.

D. Public Comment

There was no public comment received.

E. Regular Business

- E1. Approve the Complete Streets Commission regular meeting minutes of September 12, 2018 (Attachment)

ACTION: Motion and second (Meyer/Nash) to approve the Complete Streets Commission regular meeting minutes of September 12, 2018, passes (6-0-2-1, Levin and Mazzara abstained, Walser absent).

- E2. Review loading zones options for Draeger's Market located at 1010 University Drive and provide a recommendation to City Council (Staff Report #18-010-CSC)

Staff Choy provided a presentation (Attachment). The 840 Menlo Avenue representatives provided a presentation (Attachment). Draeger's Market representatives provided a presentation (Attachment).

ACTION: Motion and second (Betsy/Mazzara) to recommend to City Council to select Option D to

establish a 40-foot loading zone on the north side of Evelyn Street adjacent to 830 Menlo Avenue between 10 a.m. and 6 p.m., extend the loading hours for both sides of the parking aisle in Parking Plaza 4 closest to the market to 10 a.m., and request additional safety improvements be studied including stop signs at the Menlo Avenue and Evelyn Street intersection and additional crosswalks, passes (6-2-1; Meyer and Weiner dissented, Walser absent).

- E3. Recommend to City Council to approve the permanent installation of bicycle improvements on Oak Grove Avenue, Crane Street, and University Drive (Staff Report #18-011-CSC)

Staff Aumentado and consultant Hugh Louch provided a presentation (Attachment).

- Lisa Breakey, with donated time from Bette Bohler, requested for parking on Oak Grove Avenue near Pine Street for neighborhood loading and unloading, measures to deter bikes on sidewalks, and reduce car speed on Pine Street.
- David Hochstetler spoke in support of the project and shared his own experience.
- John Conway recommended moving a portion of the bike lane, primarily east of El Camino Real, to Glenwood Avenue due to lower vehicle volume.
- Marie Moran requested for parking on Oak Grove Avenue near Pine Street during non-peak hours.
- David Fencel requested for measures to ease vehicular access to and from Vallombrosa Center and shared his own experience.
- Yoli Schoof spoke in support of maintaining existing parking in front of the 400 Oak Grove Avenue block, exploring parking on Oak Grove Avenue near Pine Street, ensuring proper resident outreach, refreshing faded striping and signage, and shared her observations.

Meyer excused himself from the duration of the meeting at 9:33 p.m.

ACTION: Motion and second (Weiner/Lee) to recommend to City Council to approve the permanent installation of bicycle improvements on Oak Grove Avenue, Crane Street, and University Drive, and that the City strongly considers extending the Oak Grove Avenue bike lanes to University Drive and University Drive from Oak Grove Avenue to Santa Cruz Avenue, passes (7-0-2; Meyer and Walser absent).

ACTION: The Commission recommended no on-street parking for the conceptual design of the new sidewalk along the north side of Oak Grove Avenue from Nativity Church to Nativity School.

F. Informational Items

- F1. Update on major project status

Staff Chen provided updates on the ongoing Neighborhood Traffic Management Program project, Belle Haven Neighborhood Traffic Calming Plan, Willow Road and U.S. 101 Interchange Construction, and Safe Routes to School Program.

G. Committee/Subcommittee Reports

- G1. Update from Active Transportation Network Subcommittee

There was no report.

G2. Update from Electric Vehicle Subcommittee

There was no report.

G3. Update from Downtown Access and Parking Subcommittee

Commissioner Levin reported on possibly educating the community on parking, access, and Transportation Demand Management measures through third party speakers.

G4. Update from Multimodal Subcommittee

There was no report.

G5. Update from Placemaking and Outreach Subcommittee

There was no report.

G6. Update from Safe Routes to School Program Subcommittee

Commissioner Lee announced the release of the initial draft of walk and roll maps. Commissioner Mazzara announced three upcoming program related meetings in mid-November.

G7. Update from Transportation Master Plan Subcommittee

Commissioner Levin reported on the previous Oversight and Outreach Committee meetings and announced one additional meeting to be scheduled before end of this year.

H. Adjournment

Chair Kirsch adjourned the meeting at 10:36 p.m.

THIS PAGE INTENTIONALLY LEFT BLANK



STAFF REPORT

Complete Streets Commission

Meeting Date: 11/14/2017

Staff Report Number: 18-012-CSC

Regular Business: Approve installation of red curb and removal of three on-street parallel parking spaces on Chrysler Drive just south of Constitution Drive

Recommendation

Staff recommends that the Complete Streets Commission adopt a resolution (Attachment A) to install red curb and removal of three parallel on-street parking spaces on the north side of Chrysler Drive just west of Constitution Drive, to resolve an unsafe conflict area between vehicles and buses turning onto Chrysler Drive from Constitution Drive and curbside parked vehicles.

Policy Issues

The recommendation is consistent with the newly adopted Section 11.24.026 of the City ordinance, which authorizes the Complete Streets Commission to designate “No Parking Zone” (i.e., red curb) adjacent to driveways, intersections and crosswalks under specific criteria for safety concerns.

This project is also consistent with the policies and programs (i.e., CIRC-1.1, CIR-4.4) stated in the 2016 General Plan Circulation Element. These policies and programs seek to maintain and improve a circulation system through the Street Classification System that provides safe and efficient movement of people and goods throughout Menlo Park for residential and commercial purposes.

Background

Chrysler Drive is classified as a Mixed Use Collector street in the City’s General Plan. (Attachment B) It’s located between Commonwealth Drive and Bayfront Expressway in the M2 area. A “Mixed Use Collector Street” is a street that serves a significant destination, prioritizes walking and bicycling, and accommodates intra-city trips while also distributing local traffic to other streets in the area.

Chrysler Drive is used as a main roadway to access the future Tide Academy, existing and future Facebook facilities and Menlo Gateway developments as well as several other businesses in the former M2 area. Chrysler Drive and Jefferson Drive are also being considered to be designated as Class II Bike Routes in the proposed Transportation Master Plan. To allow for Class II bike routes on Chrysler Drive and Jefferson Drive, parking would need to be removed on both sides along the entire length of the roadways.

As part of the mitigation measures for the Menlo Gateway Phase II project, the developer was required to design and install a traffic signal at the intersection of Chrysler Drive and Constitution Drive. To alleviate anticipated traffic during the evening commute, that intersection design removed parking on the south side of the roadway and added an additional eastbound Chrysler Drive travel lane on the approach to Constitution Drive. Parking on the North side of the roadway was to remain. The traffic signal and associated striping changes were installed in early October 2018.

Analysis

Since the installation of the traffic signal and associated striping at Chrysler Drive and Constitution Drive, staff has made field observations of the traffic movements at this location. Although the westbound travel lane and the parking widths on Chrysler Drive meet local and Federal standards, staff has observed that large buses and trucks turning from Constitution Drive onto Chrysler Drive crossover the centerline to safely pass vehicles parked along the north side of the roadway. (Attachment C)

In order to address these wide turning movements and to avoid vehicles crossing the centerline, staff recommends installing 75 feet of red curb along the north side of Chrysler Drive just west of Constitution Drive between the first two driveways. The additional 75 feet of red curb along with the existing red curb in this area would allow for vehicles, bicycles, buses and trucks to maneuver through this section of roadway within the appropriate lanes and areas.

Impact on City Resources

If approved, there are sufficient funds in the operating budget for the City's signing and striping program to implement this project.

Environmental Review

The installation of red curb is categorically exempt under Class 1 of the California Environmental Quality Act. Class 1 allows for minor alterations of existing facilities, including highways and streets, sidewalks, gutters, bicycle and pedestrian access, and similar facilities, as long as there is negligible or no expansion of use.

Public Notice

Public Notification was achieved by posting the agenda, with the agenda items being listed, at least 72 hours prior to the meeting. Additional public outreach was achieved by sending notification postcards to the residents/property owners within 500 feet of the proposed "No Parking Zone".

Attachments

- A. Resolution
- B. Street Classification
- C. Area of Safety Concern

Report prepared by:
Richard Angulo, Assistant Engineer

Report reviewed by:
Kristiann Choy, Senior Transportation Engineer

RESOLUTION NO. _____

RESOLUTION OF THE COMPLETE STREETS COMMISSION OF THE
CITY OF MENLO PARK AUTHORIZING THE INSTALLATION OF NO
PARKING ZONE ON CHRYSLER DRIVE FRONTING 150 CONSITUION
DRIVE

WHEREAS, the Menlo Gateway development project is required to install a traffic signal at the intersection of Chrysler Drive and Constitution Drive to alleviate traffic during the weekday commute;

WHEREAS, after installation, staff observed that large buses and trucks coming from Bayfront Expressway as well as turning from Constitution Drive onto Chrysler Drive need to crossover the centerline to safely pass vehicles parked along the north side of the roadway;

WHEREAS, Title 1, Chapter 11.24, Sections 026 to 027 of the Menlo Park Municipal Code authorized the Complete Streets Commission to designate timed or no parking zones as described in the Municipal Code;

WHEREAS, the City of Menlo Park, acting by and through its Complete Streets Commission, having considered and been fully advised in the matter and good cause appearing therefore.

NOW, THEREFORE, BE IT RESOLVED, the Complete Streets Commission of Menlo Park does hereby authorize the installation of no parking zone on Chrysler Drive fronting 150 Constitution Drive.

I, Kevin Chen, City staff liaison to the Complete Streets Commission of Menlo Park, do hereby certify that the above and foregoing Commission Resolution was duly and regularly passed and adopted at a meeting by said Commission on the fourteenth day of November, 2018, by the following votes:

AYES:

NOES:

ABSENT:

ABSTAIN:

IN WITNESS WHEREOF, I have hereunto set my hand and affixed the Official Seal of said City on this fourteenth day of November, 2018.

Kevin Chen
Complete Streets Commission Liaison

THIS PAGE INTENTIONALLY LEFT BLANK

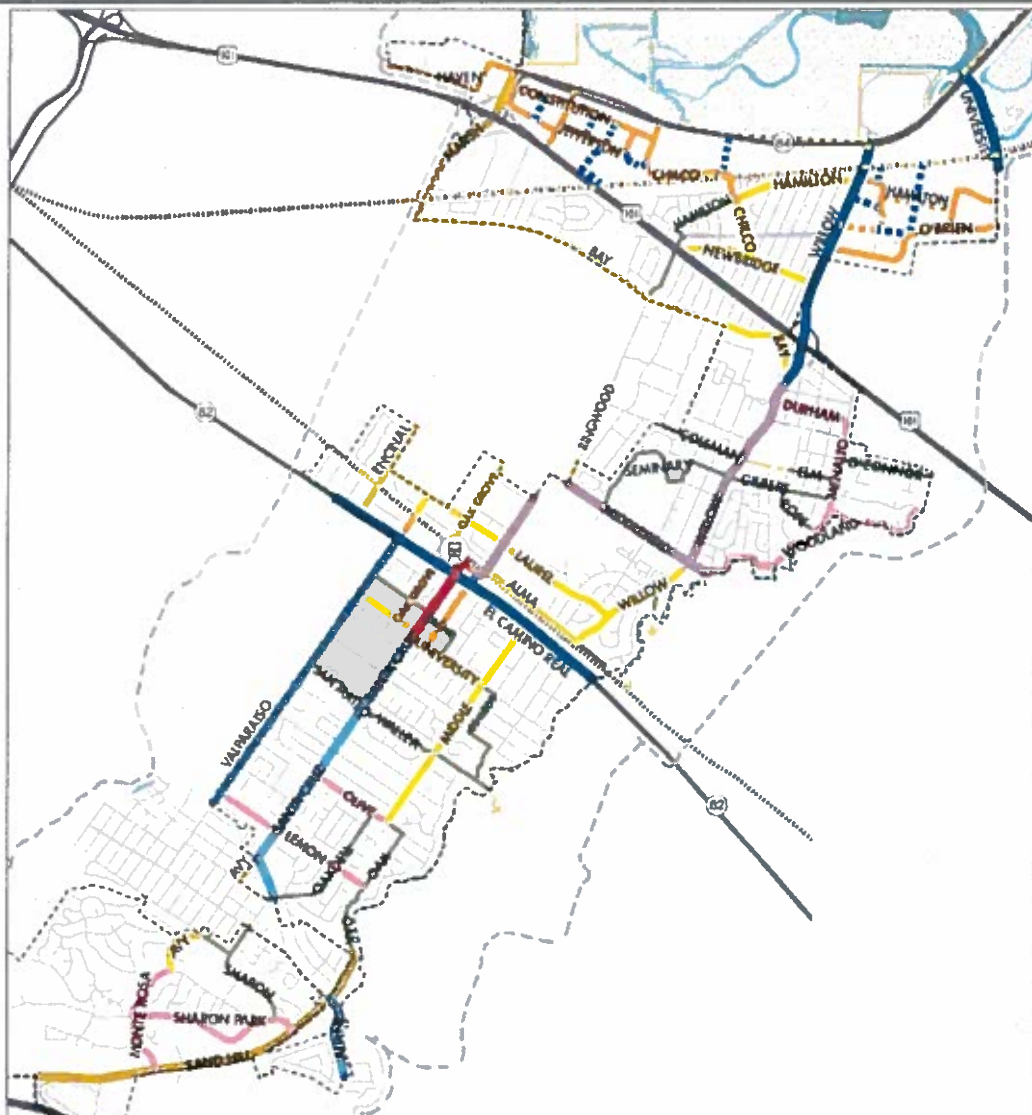


CONNECTMENLO

menlo park land use & mobility update

Proposed Street Classifications

Slide 26



Street Classifications

- Freeway/Expressway
- Boulevard
- Thoroughfare
- Main Street
- Avenue - Mixed Use
- Avenue - Neighborhood
- Mixed Use Collector
- Mixed Use Collector - future
- Neighborhood Collector
- Neighborhood Connector
- Bicycle Boulevard
- Local Access
- Multi-use Pathway
- Multi-use Pathway - future
- Paseo - future

THIS PAGE INTENTIONALLY LEFT BLANK

K:\BAY_TPTO\097711100 - Menlo Gateway\08 CADD\PlanSheets - Off-Site\26 SS-03 - SIGNING AND STRIPING.dwg 12/14/2017 3:30 PM

This document, together with the concepts and designs presented herein, is intended only for the specific purpose and client for which it was prepared. Reuse of and improper reliance on this document without written authorization and adaptation by Kimley-Horn and Associates, Inc. shall be without liability to Kimley-Horn and Associates, Inc.



Know what's below.
Call before you dig.

No.	REVISIONS	DATE	BY
	CONSTRUCTION COORDINATION UPDATE	05/08/17	BZH

Kimley»Horn

4637 CHABOT DRIVE, STE. 300 PLEASANTON, CA 94588
PHONE: 925-398-4840
WWW.KIMLEY-HORN.COM

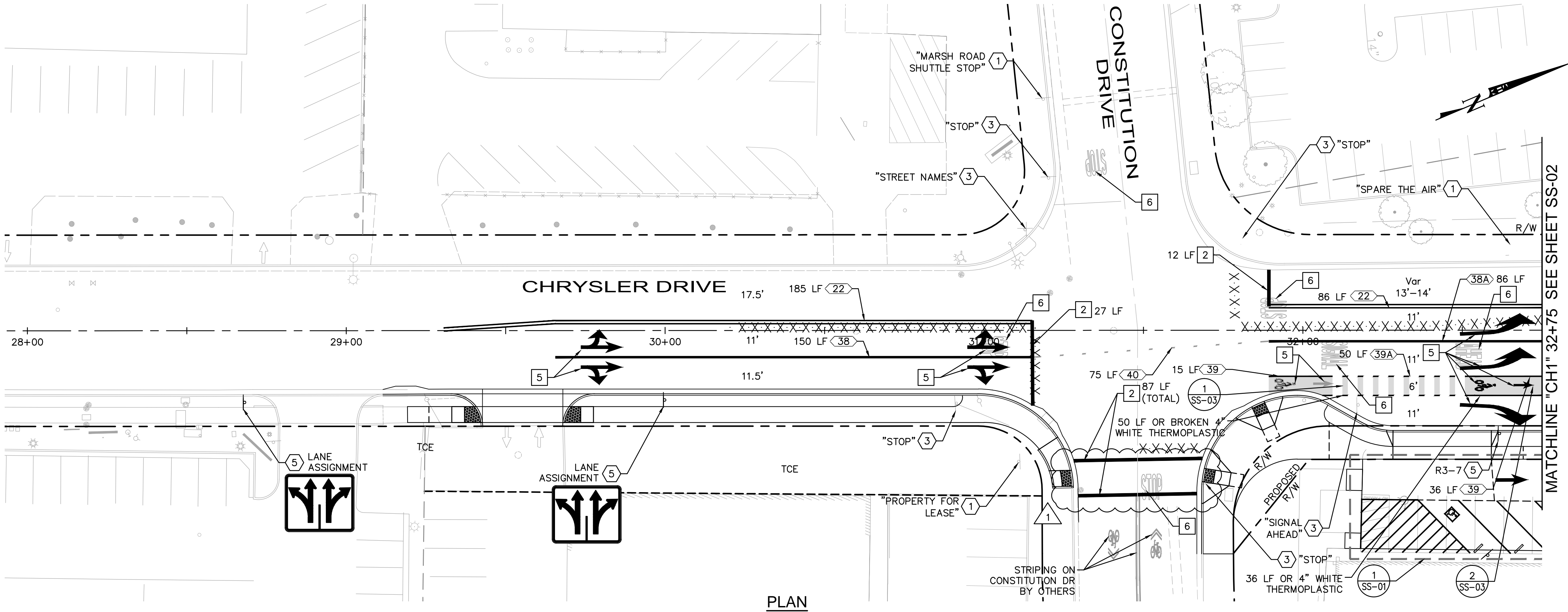
KHA PROJECT 097711101
DATE 02/24/2017
SCALE AS SHOWN
DESIGNED BY BZH
DRAWN BY BZH
CHECKED BY DCC



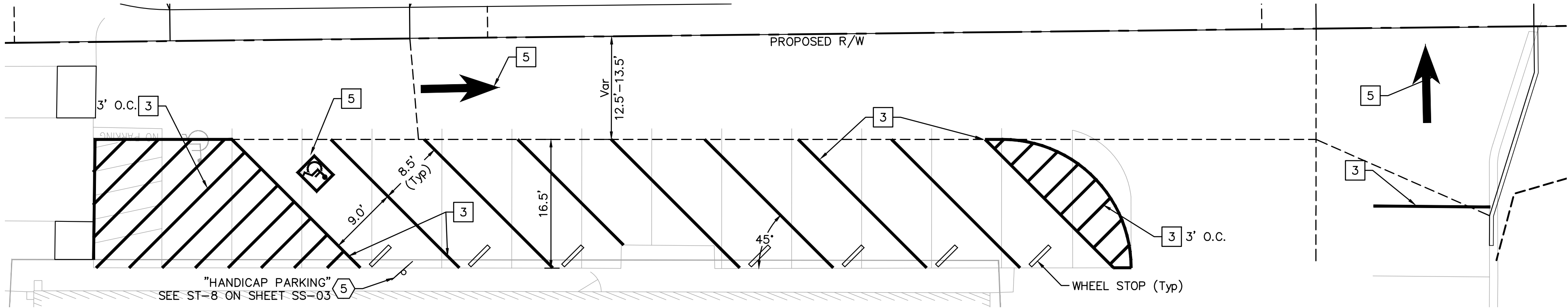
SIGNING AND STRIPING PLAN
CHRYSLER DRIVE

CITY OF MENLO PARK

DRAWING NUMBER
SS-01
SHEET NUMBER
24 OF 43



PLAN



PARKING DETAIL
SCALE: 1"=10'

SIGNING NOTES

- 1 PROTECT EXISTING SIGN(S) IN PLACE.
- 3 SALVAGE EXISTING SIGN AND POLE.
- 5 INSTALL ROADSIDE SIGN.

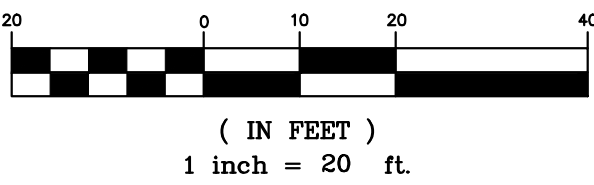
STRIPING NOTES

- 2 INSTALL 12" WHITE LINE (THERMOPLASTIC).
- 3 INSTALL 4" WHITE LINE (THERMOPLASTIC).
- 5 INSTALL PAVEMENT MARKING PER CALTRANS STANDARD PLAN A24A THROUGH A24E. SEE SHEET CD-02.
- 6 REMOVE EXISTING PAVEMENT MARKING.

LEGEND AND ABBREVIATIONS

- X PAVEMENT DELINEATION DETAIL NUMBER
- NEW ROADSIDE SIGN ON POST
- PAVEMENT ARROW (TYPE IV) (R)
- PAVEMENT ARROW (TYPE IV) (L)
- PAVEMENT ARROW (TYPE III) (R)
- PAVEMENT ARROW (TYPE III) (L)
- BIKE LANE SYMBOL AND ARROW
- BIKE DETECTOR SYMBOL
- PAVEMENT ARROW (TYPE I, 10')
- PAVEMENT ARROW (TYPE VII) (L)
- INTERNATIONAL SYMBOL OF ACCESSIBILITY (ISA) MARKING
- XXXXXXX REMOVE STRIPING
- X-X SIGN No.

GRAPHIC SCALE



THIS PAGE INTENTIONALLY LEFT BLANK