



REGULAR MEETING MINUTES

Date: 8/14/2019
Time: 7:00 p.m.
City Council Chambers
701 Laurel St., Menlo Park, CA 94025

A. Call to Order

Chair Behroozi called the meeting to order at 7:05 p.m.

B. Roll Call

Present: Behroozi, Cebrian, Kirsch, Levin, Weiner
Absent: Cromie, Goldin, Lee, Meyer
Staff: Associate Transportation Engineer Kevin Chen, Transportation Demand Management Coordinator Nick Yee,

C. Reports and Announcements

Staff Chen announced upcoming City events and a summary of City Council actions on transportation related items since the July 10 Commission meeting.

Commissioner Kirsch announced his attendance at the Silicon Valley Bicycle Summit and shared feedback on: the City of Palo Alto's citywide speed limit sign, ongoing El Camino Real bike lane improvement plans from neighboring agencies, and the City of Fremont's complete streets re-pavement policy.

D. Public Comment

- Jen Wolosin encouraged the City to include piloting of future projects as trials in their regular scopes of work and referenced recent successful pilots implemented by neighboring agencies.
- Ken Kershner shared feedback from his attendance at the Association for Commuter Transportation conference and the need for political will to make a positive difference in a City.

E. Regular Business

- E1. Approve the Complete Streets Commission regular meeting minutes of July 10, 2019 (Attachment)

Item continued to September 11.

- E2. Provide feedback on the School Walk and Roll map development criteria and guidelines (Staff Report #19-012-CSC)

Staff Yee and Alta Planning + Design Consultant Andre-Anne Cadieux, serving as the City's Safe Routes to School Coordinator, provided a presentation (Attachment).

- Jen Wolosin spoke in support for infrastructure for those impacted by the large number of schools in the City. Wolosin suggested using the maps as an opportunity to upgrade infrastructure.

The Commission discussed school walk and roll maps.

E3. Evaluate Commission subcommittees

The Commission exchanged feedback on how subcommittees can better utilize their skillsets and interests to communicate the City's project procedure to the public.

F. Informational Items

F1. Update on major project status

Staff Chen provided updates on the neighborhood traffic management program projects, the transportation master plan, the Belle Haven traffic calming plan, the City's rail policy, the Middle Avenue rail crossing, and the US 101 / Willow Road interchange construction.

G. Committee/Subcommittee Reports

G1. Update from Active Transportation Network Subcommittee

Commissioner Weiner updated the Commission on additional Middle Avenue undercrossing comments that he shared with City staff in his capacity as a Menlo Park resident (Attachment).

- Drew, a public speaker, spoke about the need to provide design related comments to the City Council prior to the full design phase.

G2. Update from Downtown Access and Parking Subcommittee

Commissioner Levin updated the Commission on possible future community forums with community partners on downtown access improvements.

G3. Update from Multimodal Subcommittee

Commissioner Levin updated the Commission on the progress of the Dumbarton rail corridor program.

G4. Update from Safe Routes to School Program Subcommittee

None.

G5. Update from Transportation Master Plan Subcommittee

None.

G6. Update from Zero Emission Subcommittee

None.

H. Adjournment

Chair Behroozi adjourned the meeting at 9:27 p.m.

THIS PAGE INTENTIONALLY LEFT BLANK



SAFE ROUTES TO SCHOOL MAPS UPDATE

Complete Streets Commission - August 14, 2019



AGENDA

- Program Background
- Methodology for Creating Maps
- Challenges of Maps
- Guidance and Next Steps





BACKGROUND



BACKGROUND



- Safe Routes to School Program (SRTS) encourages bicycling and walking as safe, sustainable ways for children to get to school
- SRTS studies have been conducted over the years in Menlo Park, programs exist at various schools
- Goal of SRTS program in current iteration is to have a true **Citywide** program that serves the entire community equally and equitably



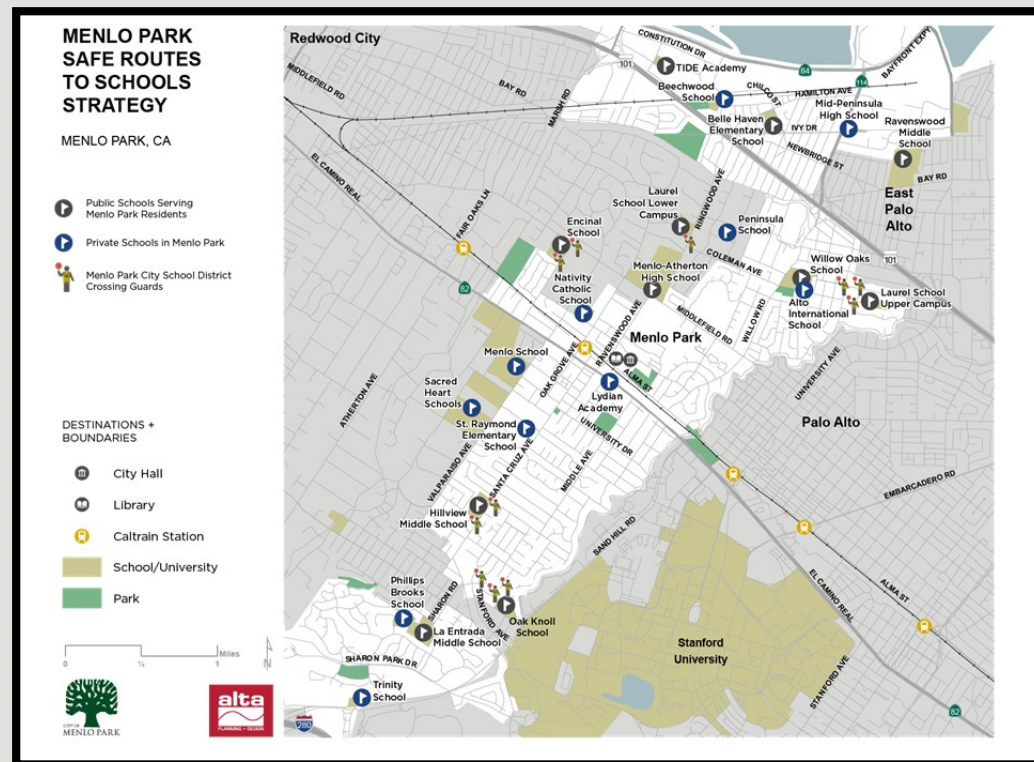
STAKEHOLDERS



Schools	Public Agencies	Community
Las Lomas Elementary School District	City of East Palo Alto	Local residents
Menlo Park City School District	City of Menlo Park	Parents and students
Ravenswood City School District	County of San Mateo	Parents for Safe Routes
Sequoia-Union High School District	San Mateo County Office of Education	Parent Teacher Organizations/Associations
Private schools	Town of Atherton	



MAP OF MENLO PARK AREA SCHOOLS





LIST OF MENLO PARK AREA SCHOOLS



Public Schools		Private Schools	
1. Belle Haven School	6b. Laurel School Upper School	1. Alto International School	7. Peninsula School
2. Encinal School	7. Menlo-Atherton High School	2. Beechwood School	8. Phillips Brooks School
3. Hillview Middle School	8. Oak Knoll School	3. Lydian Academy	9. Sacred Heart Schools
4. La Entrada Middle	9. Ravenswood Middle School	4. Menlo School	10. St. Raymond School
5. Las Lomitas Elementary	10. TIDE Academy	5. Mid-Peninsula High School	11. Synapse School
6a. Laurel School Lower Campus	11. Willow Oaks School	6. Nativity Catholic School	12. Trinity School



METHODOLOGY



PURPOSE OF MAPS



- Walk and Roll maps are suggested bicycling and walking routes for children to safely get to school
- Many successful SRTS programs have these as educational resources
 - Palo Alto, Cupertino as local examples
- Program will create a map for all 24 schools in the Menlo Park area to share with parents and students



CREATION OF MAPS



- Maps were created by the SRTS consultant, Alta Planning + Design
- Used their local and national expertise on SRTS programs
- Maps created using existing data sets, surveys, studies



MAP OUTREACH



- **Early 2019:** Initial drafts released to City staff for review and revisions before public release
- **March 2019:** “Spring Party” kick off meeting to share maps and ask for feedback via online survey platform
- **March to June 2019:** Public feedback
- **June to August 2019:** “Final” cleanup of maps
- **August 2019:** Complete Streets Commission feedback





CHALLENGES



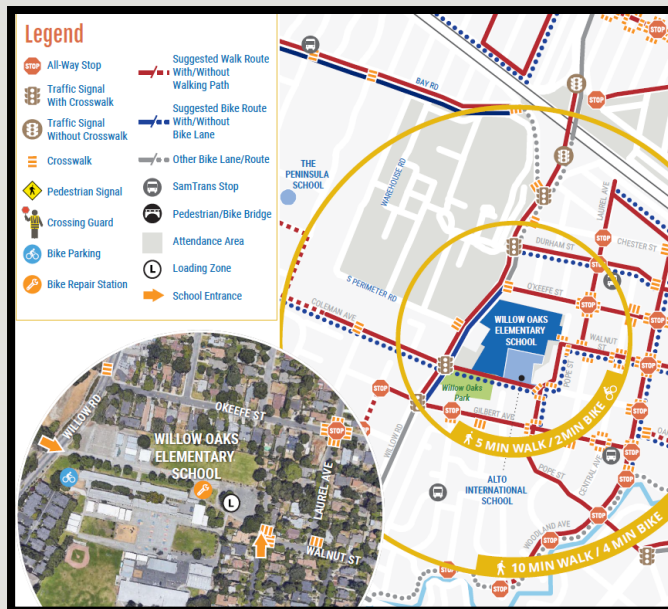
THOUGHT PROCESS



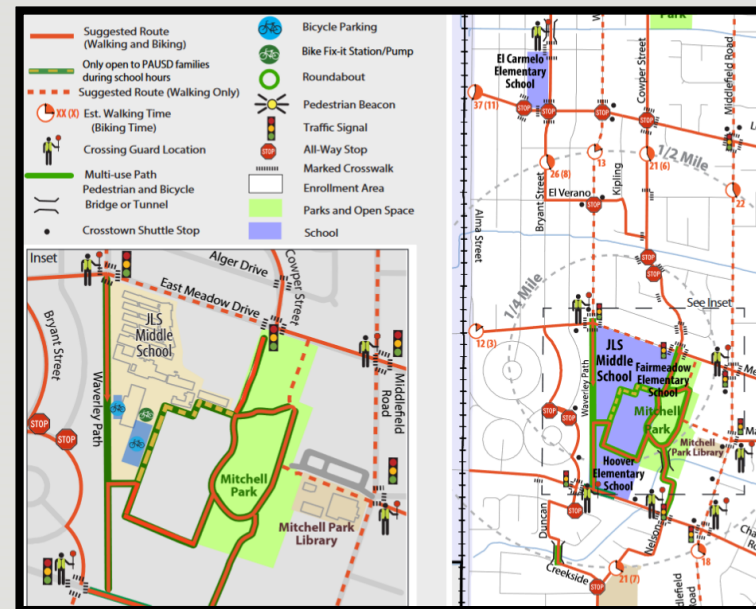
- Verifying accuracy of data sets versus real world conditions
- Prioritizing public schools first
- Examples of considerations when making maps:
 - Separating separate suggested bike routes and walk routes
 - Displaying gaps in pedestrian/bicycle infrastructure
 - Defining walking paths



BICYCLING AND WALKING FACILITIES



Menlo Park Walk and Roll Map



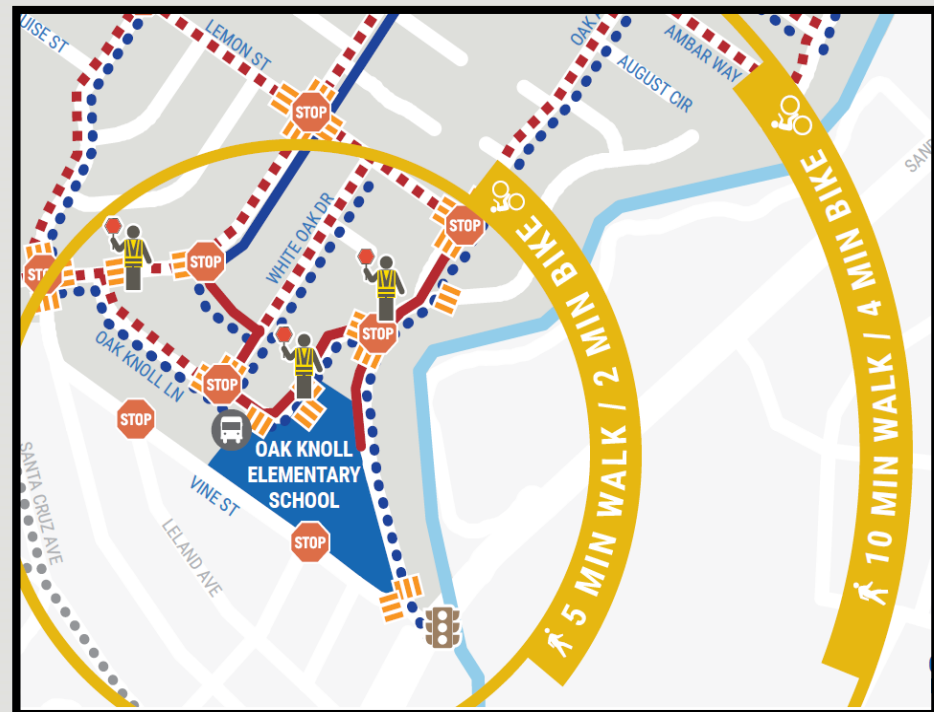
Palo Alto Walk and Roll Map



NETWORK GAPS



- Maps show connectivity gaps
- Many paved walkways near Oak Knoll School
- Conversion to sidewalks, or simply adding 'no parking' signs during school hours could increase walkability safely





WALKING PATHS



**Laurel St
(by City Hall)**



**Stanford Ave
(near Lemon St)**



**Coleman Ave
(near Berkeley Ave)**





NEXT STEPS



OPPORTUNITIES



- Maps are dynamic, will continue to be updated to reflect changes such as:
 - New pedestrian/bicycle infrastructure
 - Updated attendance area
 - Better routes
- Maps as tools to guide future Capital Improvement Projects needs list
- Upcoming online map will show map connectivity on larger scale than individualized maps



NEXT STEPS



- Finalizing Walk and Roll maps to release in conjunction with Back to School Nights in late August / early September
- Requesting guidance from the Commission to help finalize maps
- Guidance will help balance maps details with legibility and clarity



COMMISSION GUIDANCE

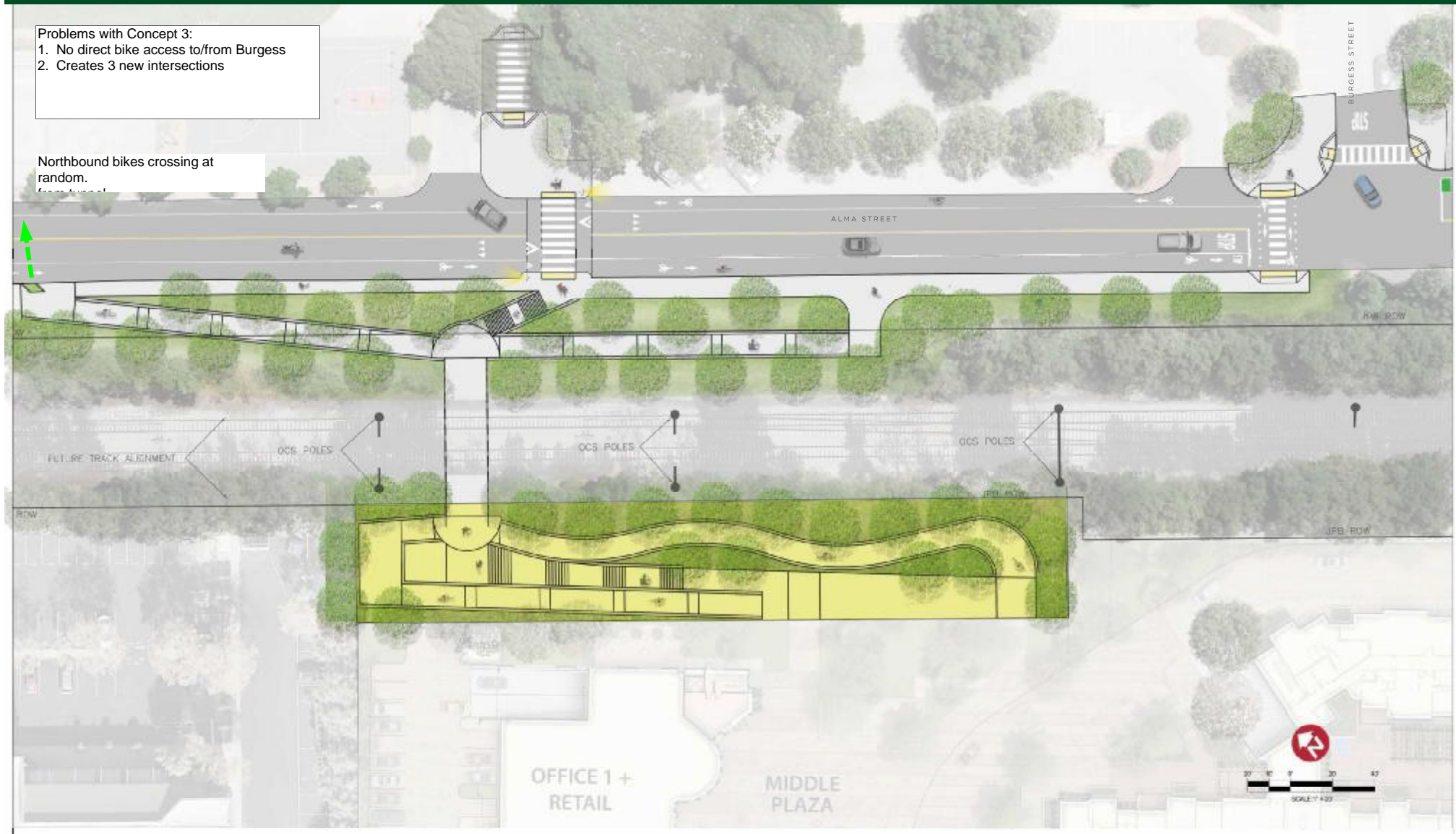


1. What are age-appropriate bicycling and walking distances/routes?
2. What routes would you choose that are outside the age-appropriate bicycling and walking distances?
3. How would you recommend presenting the bicycle network on a Citywide scale?



THANK YOU

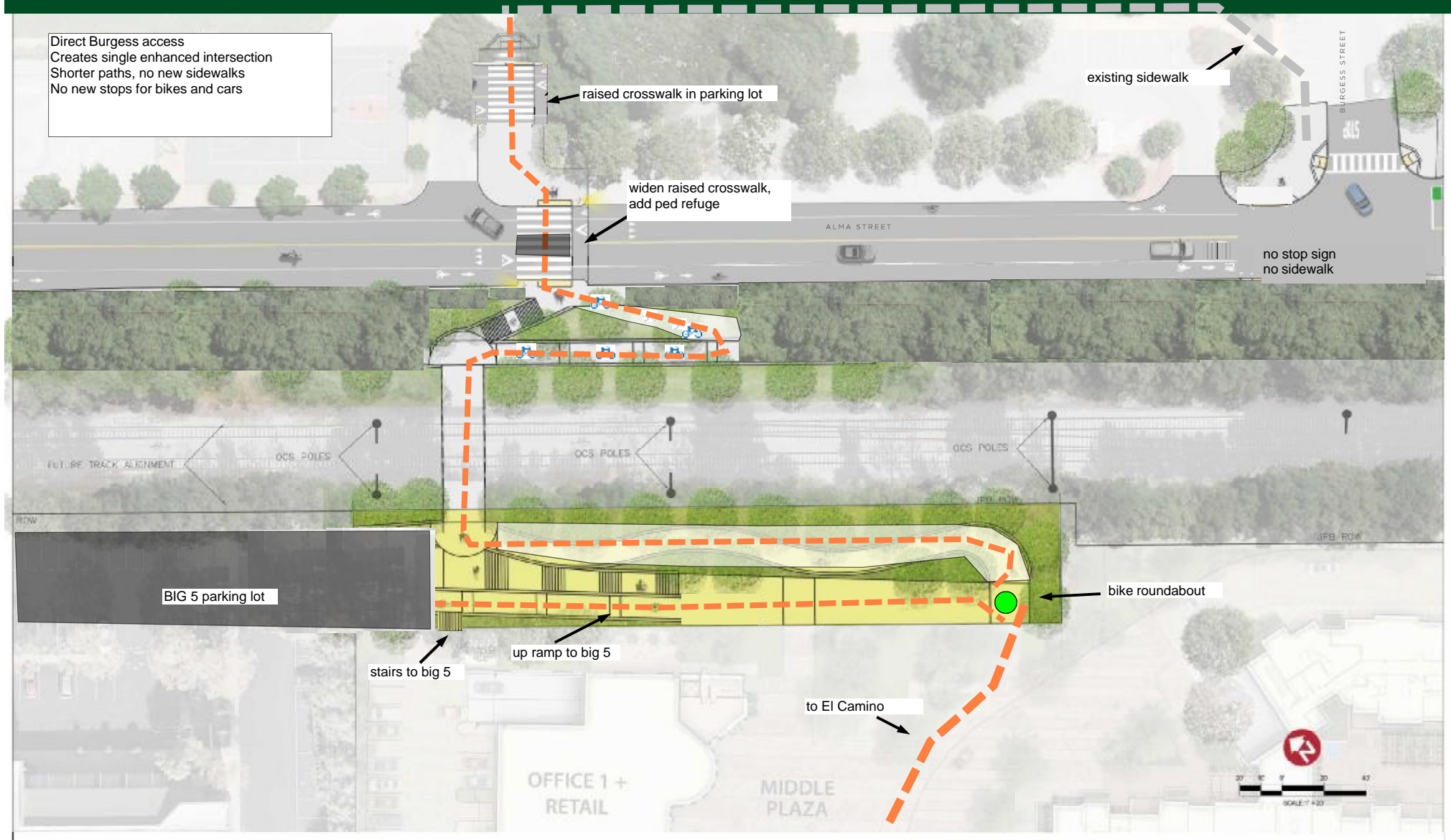
Middle Avenue Undercrossing - Concept 3 Plan



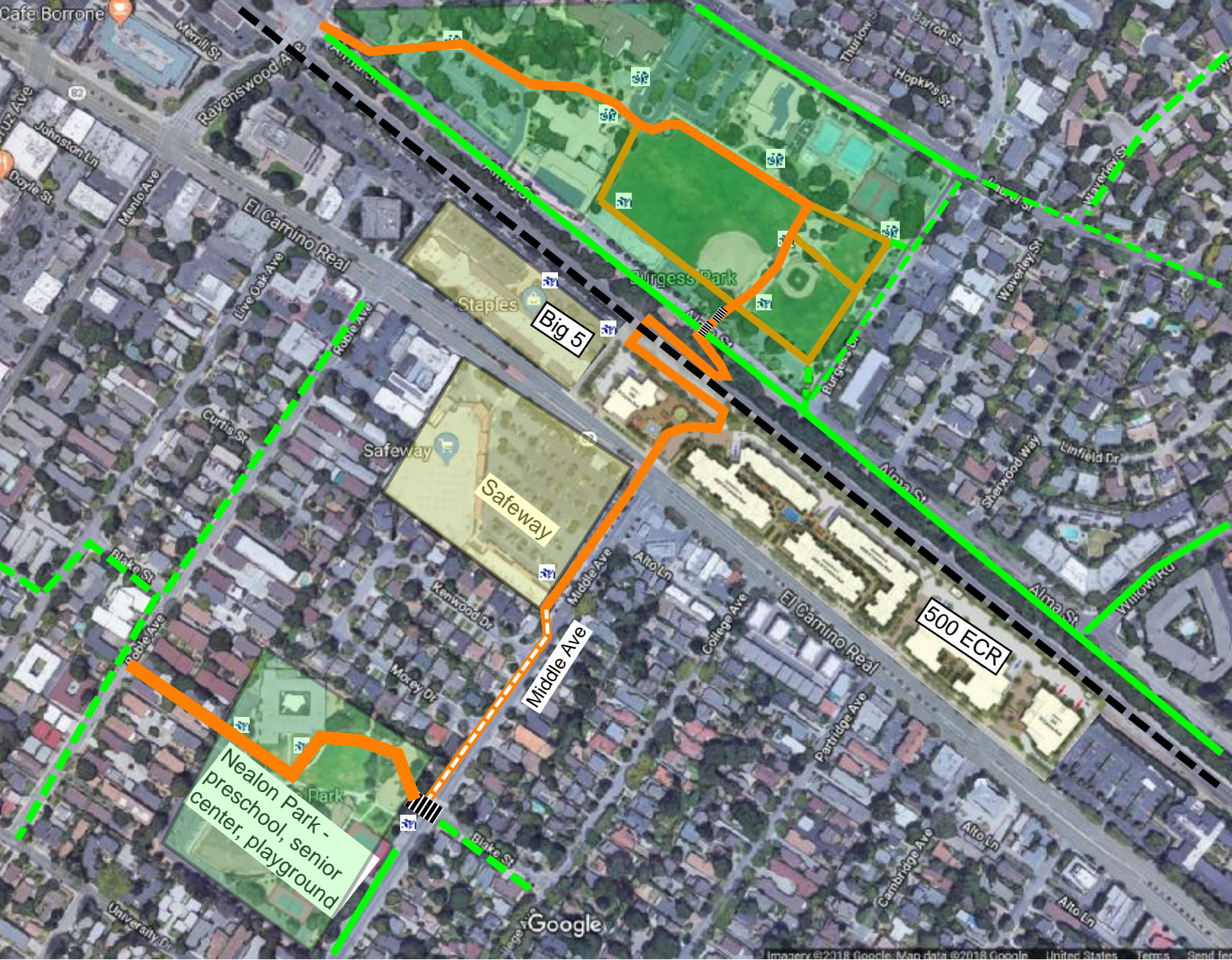
**Middle Avenue Pedestrian and Bicycle
Rail Crossing Study**



Middle Avenue Undercrossing - Concept 3' Plan



Undercrossing Concept 3' in context.



Cycletrack destination

- baseball fields
- pool
- skatepark
- library
- city hall
- rec center
- safeway
- nealon park
- preschool
- senior center
- big 5
- 500 ECR
- Middle Plaza

- cycletrack class 4
- cycletrack class 1
- Bike lane
- Shared lane
- Raised Crosswalk
- Park
- commercial

El Camino Park



Widen Burgess paths to 12' to accommodate bicycles



Bidirectional bike lane
extends along Safeway
frontage to Caltrain
undercrossing.

Palo Alto Middlefield Rd two-way protected bike lane





Two-way protected bike lane from Nealon Park to Safeway.

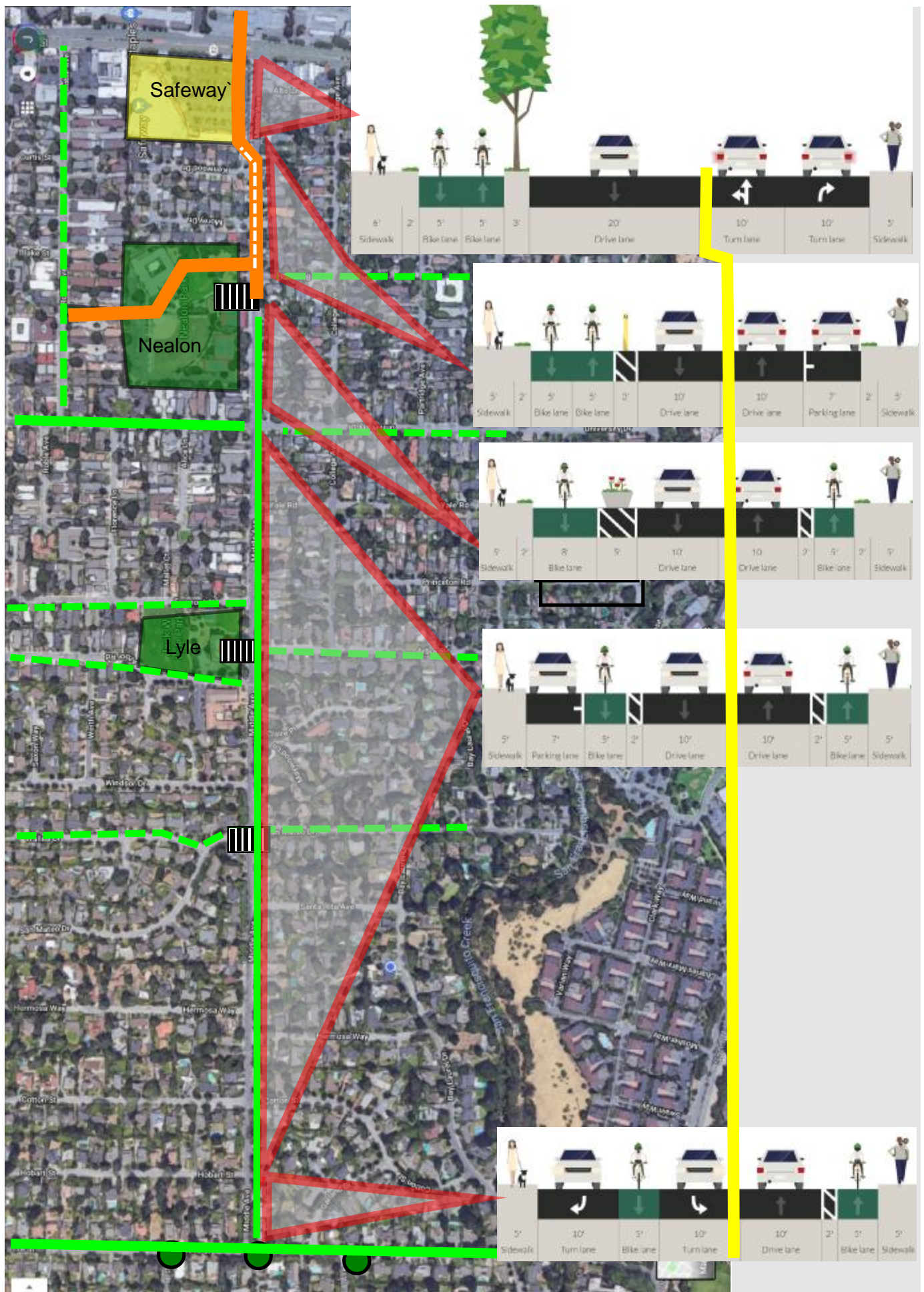
Becomes protected one-way bike lanes west of Blake.

East of Blake parking remains on south side of Middle.

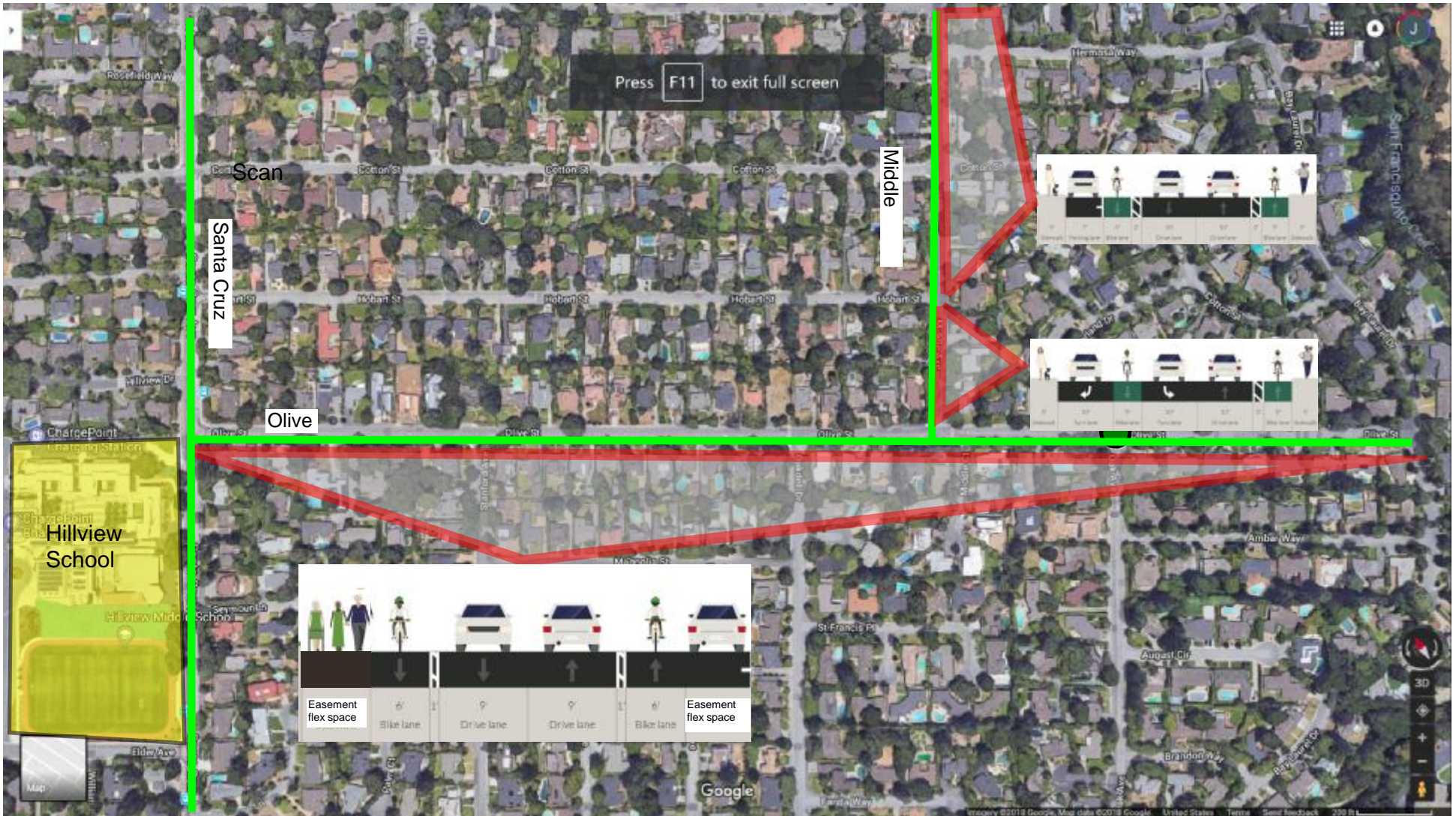
Parking available (subject to parking study) in the Nealon parking lot so parking is removed from park frontage on Middle. Space is reclaimed for landscaping and paths.

Raised crosswalk with pedestrian refuge. Optional: prohibit left turns to/from Blake.

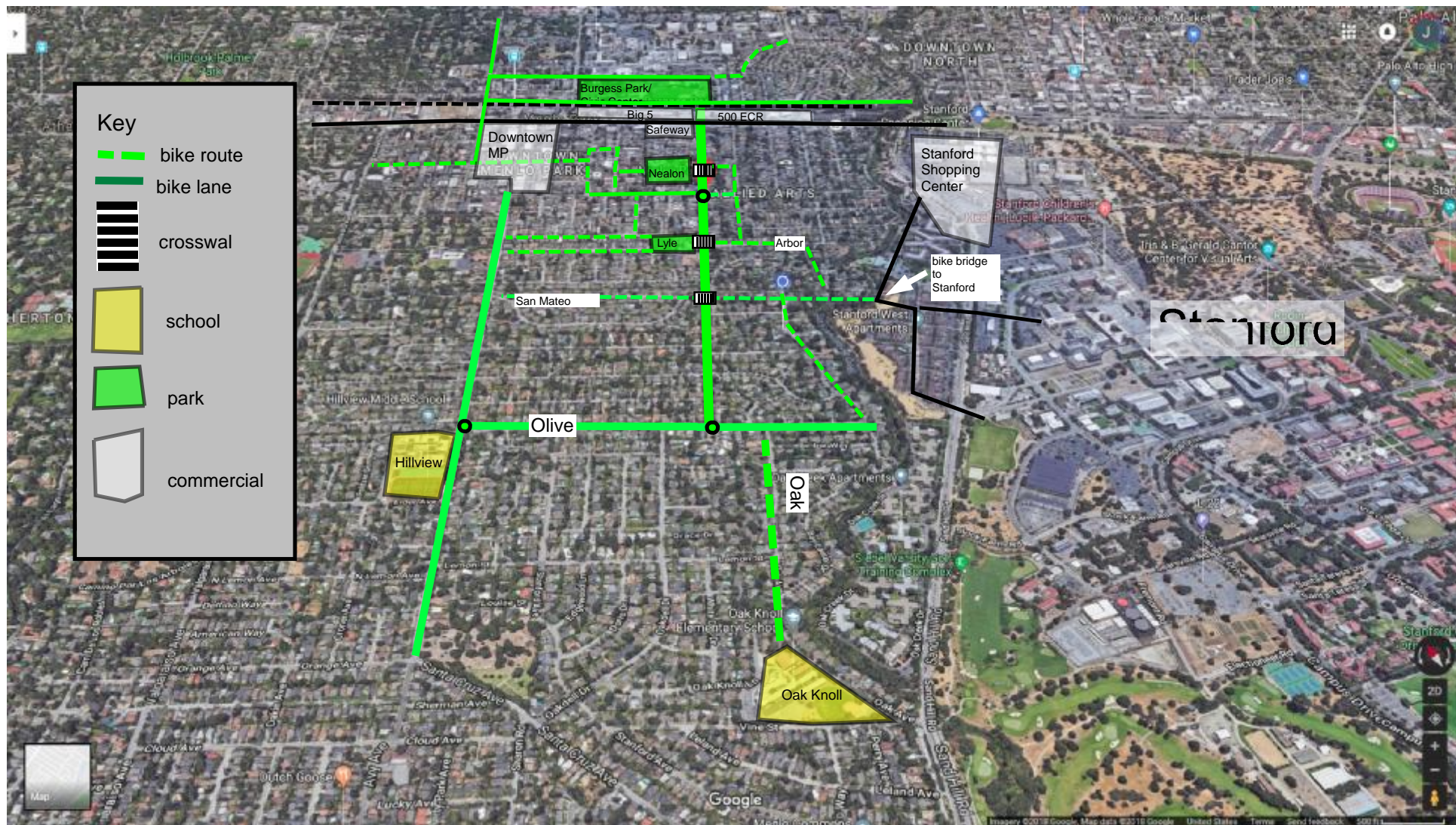
Middle Ave proposal



Olive St proposal



Parking on Olive allowed wherever easement space is available.



Middle Ave occupies key geographic region between major auto trip generators. Connects multiple parks, schools, senior centers and athletic facilities and commercial areas. Fully connected, safe bike (ebike, scooter, etc.) lanes provide congestion relief.