



REGULAR MEETING MINUTES

Date: 1/8/2020
Time: 7:00 p.m.
City Council Chambers
701 Laurel St., Menlo Park, CA 94025

A. Call to Order

Chair Behroozi called the meeting to order at 7:06 p.m.

B. Roll Call

Present: Behroozi, Cromie, Goldin, Levin, Meyer, Weiner
Absent: Cebrian, Kirsch, Lee
Staff: Acting Senior Transportation Engineer Kevin Chen

C. Reports and Announcements

Staff Chen announced upcoming City events and a summary of City Council actions on transportation related items since the December 11, 2019, Commission meeting.

D. Public Comment

None.

E. Regular Business

- E1. Approve the Complete Streets Commission regular meeting minutes of December 11, 2019 (Attachment)

ACTION: Motion and second (Goldin/Levin) to approve the Complete Streets Commission regular meeting minutes of December 11, 2019, with correction for item G2 from “progresses” to “progress”, passed (5-0-1-3, Cromie abstained, Cebrian, Kirsch and Lee absent).

- E2. Provide feedback on the approach to updating the transportation impact analysis guidelines

Staff Chen made the presentation (Attachment).

- Diane Bailey spoke in support of transitioning from measure of Level of Service (LOS) to Vehicle Miles Traveled in transportation analyses.

ACTION: Motion and second (Levin/Goldin) to encourage the City Council to reduce or eliminate the use of LOS in local transportation analyses and designate Commissioner Levin to speak for the Commission at future City Council meetings, passed (4-2-3, Cromie and Meyer dissented, Cebrian, Kirsch and Lee absent).

F. Informational Items

F1. Receive a presentation from Active Transportation Network Subcommittee

Commissioners Goldin and Weiner made the presentation (Attachment).

- John Pimentel spoke about the need to consider the Caltrain railroad grade separation project.

F3. Update on major project status

Staff Chen provided updates on the Ravenswood railroad crossing project and the Middle Avenue pedestrians and bicycle rail crossing project.

G. Committee/Subcommittee Reports

G1. Update from Active Transportation Network Subcommittee

None.

G2. Update from Climate Action Plan Subcommittee

Commissioners Goldin and Levin reported on the past subcommittee meeting and how to strategize future action after the City Council goal setting meeting.

G3. Update from Downtown Access and Parking Subcommittee

None.

G4. Update from Multimodal Subcommittee

Commissioner Levin reported that SamTrans is seeking funds for the Dumbarton Rail Corridor study.

G5. Update from Safe Routes to School Program Subcommittee

None.

G6. Update from Transportation Master Plan Subcommittee

None.

G7. Update from Zero Emission Subcommittee

Commissioners Goldin and Meyer reported on e-scooter pilot program progress made by neighboring cities and intention to reach out to City Councilmembers for further discussion.

H. Adjournment

Chair Behroozi adjourned the meeting at 8:56 p.m.

Kevin Chen, Acting Senior Transportation Engineer



TRANSPORTATION IMPACT ANALYSIS GUIDELINE UPDATE

- Compliance with Senate Bill (SB) 743 and CEQA guidelines
- SB 743
 - Ensure that the environmental impacts of traffic, such as noise, air pollution and safety concerns, continue to be properly addressed and mitigated through CEQA
 - More appropriately balance the needs of congestion management with statewide goals related to infill development, promotion of public health through active transportation, and reduction of greenhouse gas emissions
- CEQA guidelines / evaluation metric: vehicle miles traveled
 - Measure the amount of travel for all vehicles in a defined area
 - The total number of vehicle trips multiplied by the total distance each vehicle travels



TRANSPORTATION IMPACT ANALYSIS GUIDELINE UPDATE



- Vehicle miles traveled (VMT) and levels of service (LOS)
- VMT goals
 - Reduce greenhouse gas emissions
 - Develop multimodal transportation networks
 - Provide a diversity of land uses
- LOS goals
 - Reduce congestion
 - Develop transportation roadway networks
 - Evaluate project site circulation

TRANSPORTATION IMPACT ANALYSIS GUIDELINE UPDATE - SCHEDULE

- January 14 – City Council Study Session
- March 11 – Complete Streets Commission review
- March/April – Planning Commission review
- April/May – City Council review
- June – City Council adoption

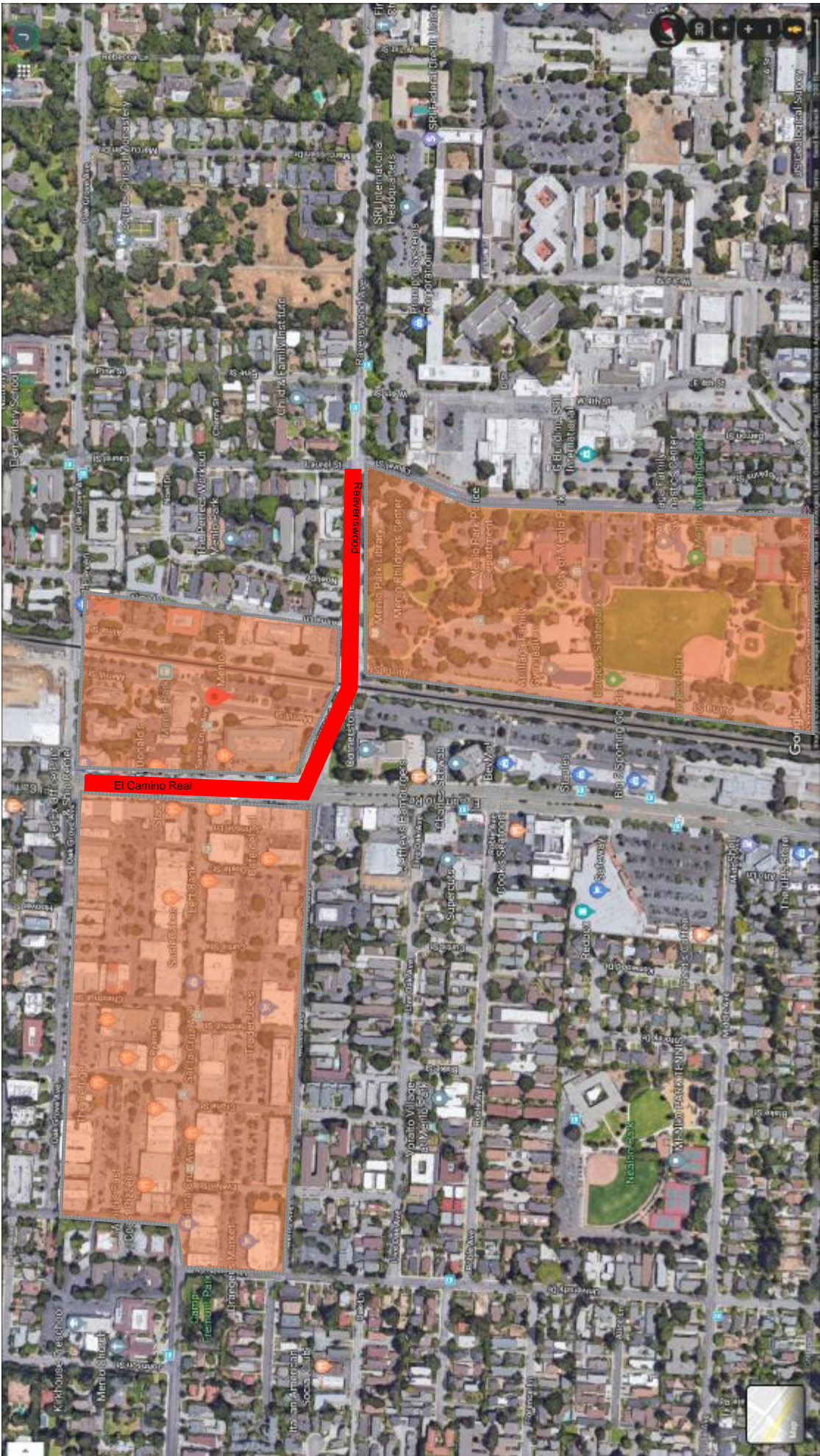
THIS PAGE INTENTIONALLY LEFT BLANK

Menlo Park Developments



1300 ECR occupancy late 2020. 1000 employees, 400 residents
 500 ECR occupancy 2022. 1000 employees, 400 residents
 2022 Electrified Caltrain
 505 Santa Cruz

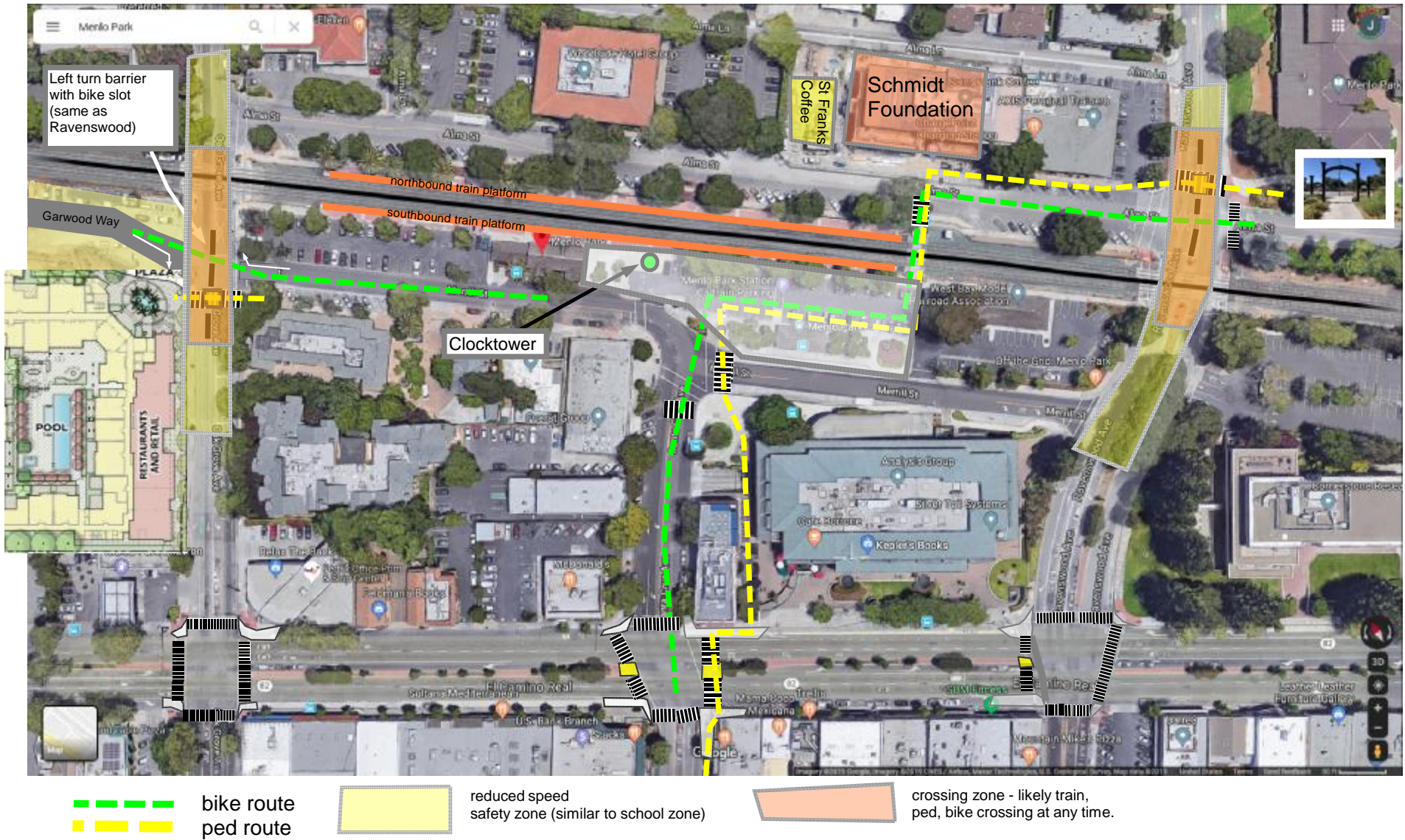
THIS PAGE INTENTIONALLY LEFT BLANK



Opportunity to capitalize on Menlo Park geographical advantage: contiguous commercial, transportation and civic amenities.

THIS PAGE INTENTIONALLY LEFT BLANK

Station Area overview proposed

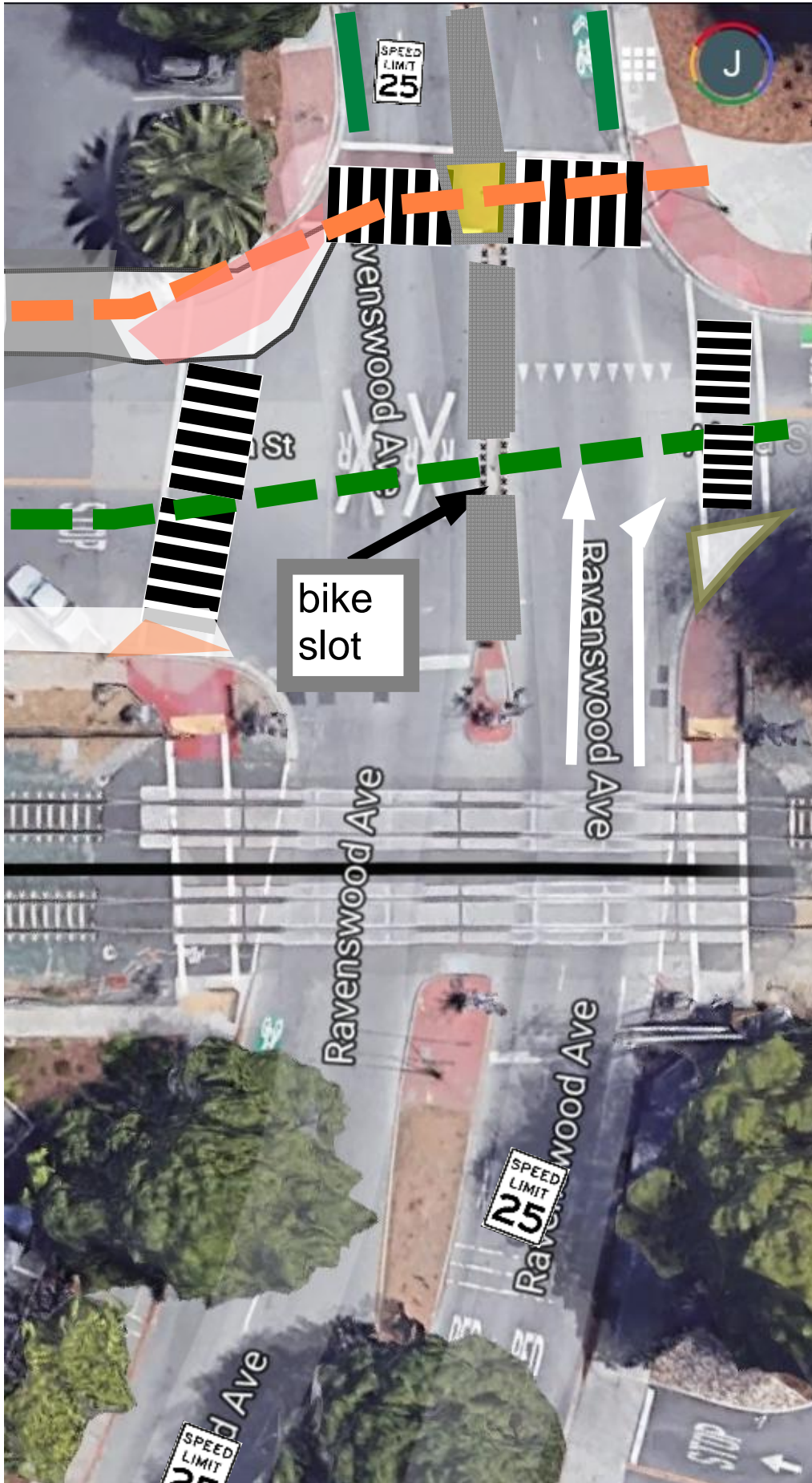


Path traverses both Caltrain platforms, bus stations, Borrone/Keplers
 Well-defined path for peds and bikes connects downtown to Burgess via Caltrain station.

Burgess Park looking toward Ravenswood through Menlo Gates



Busiest pedestrian intersection in MP.



Busiest pedestrian intersection in MP

Location of Menlo Gates entrance to Civic Center/Burgess Park.

Key connector between Caltrain and Civic Center.

Merge 2 lanes to one west of tracks in both directions to allow single lane crossing with refuge across Ravenswood.

THIS PAGE INTENTIONALLY LEFT BLANK

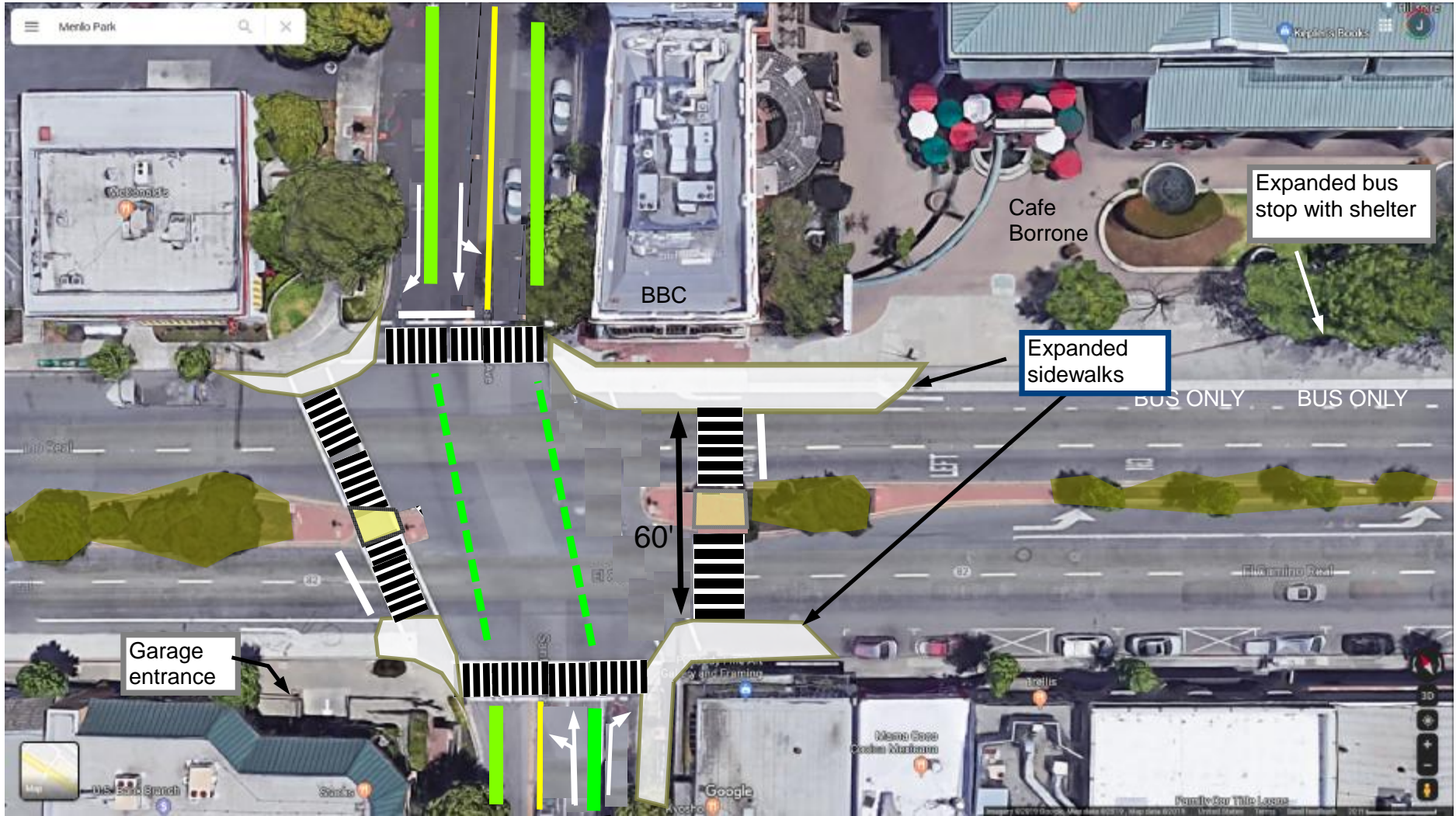
Santa Cruz Ave at El Camino existing



Turn lanes are underutilized. Read lane volumes as (AM peak hour cars, PM peak hour cars)

Santa Cruz

Santa Cruz Ave at El Camino proposed



Pedestrians crossing ECR have refuges with signal buttons.
 Expand sidewalks into underutilized turn lanes
 Create bike lanes on Santa Cruz from Merrill to Doyle using existing road space more efficiently.
 Parking removal not required.
 May allow shorter signal countdowns

Convert 3 eastbound lanes to 2

Santa Cruz

Ravenswood at ECR Existing



Ravenswood

Ravenswood at ECR Proposal 1.



Add bulbouts where possible.

Ravenswood

Ravenswood at ECR Proposal 2.



Replace westbound right turn lane with bulbout. Convert through lane to through/right.

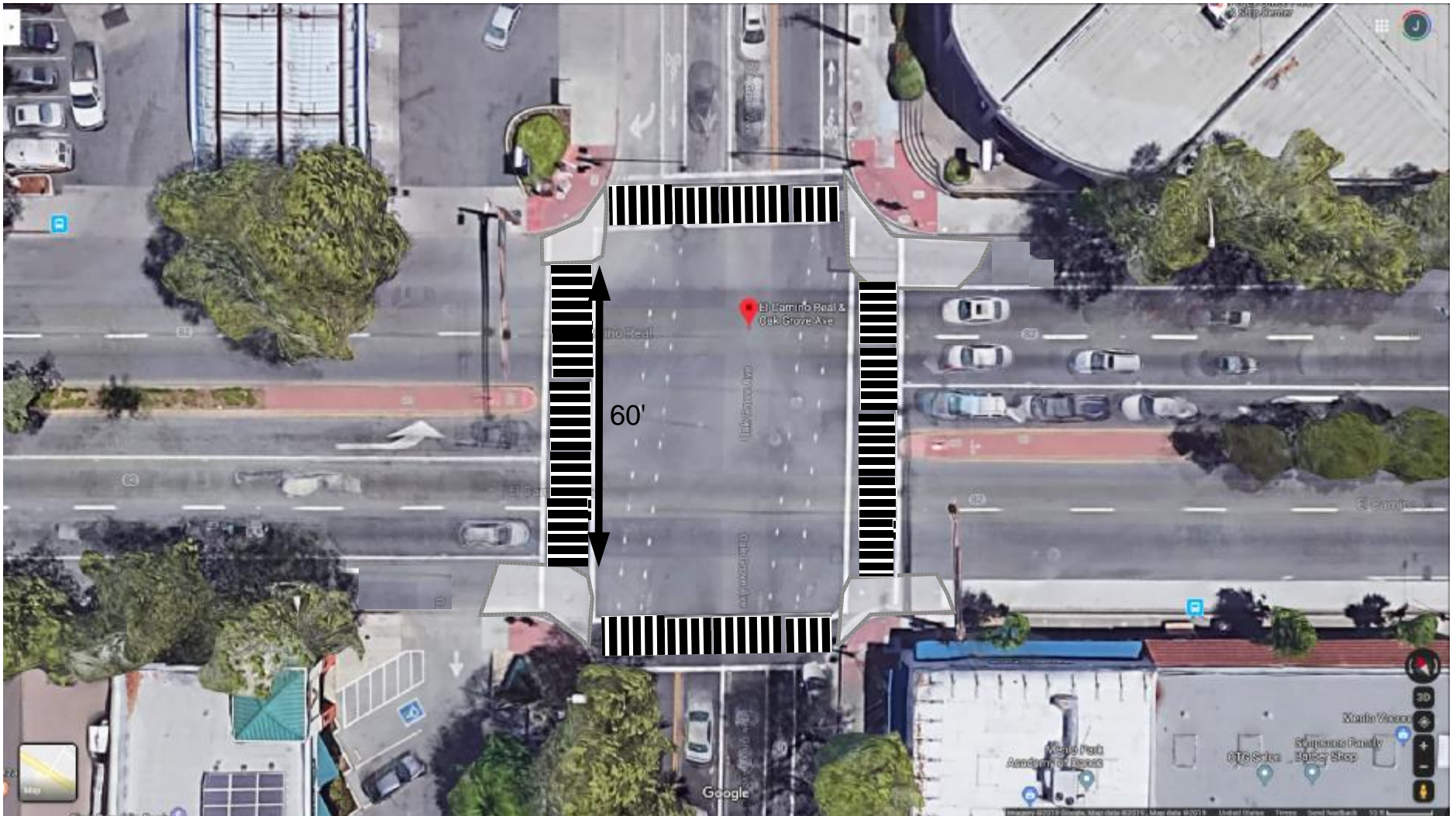
Ravenswood

Oak Grove at ECR Existing



Oak Grove

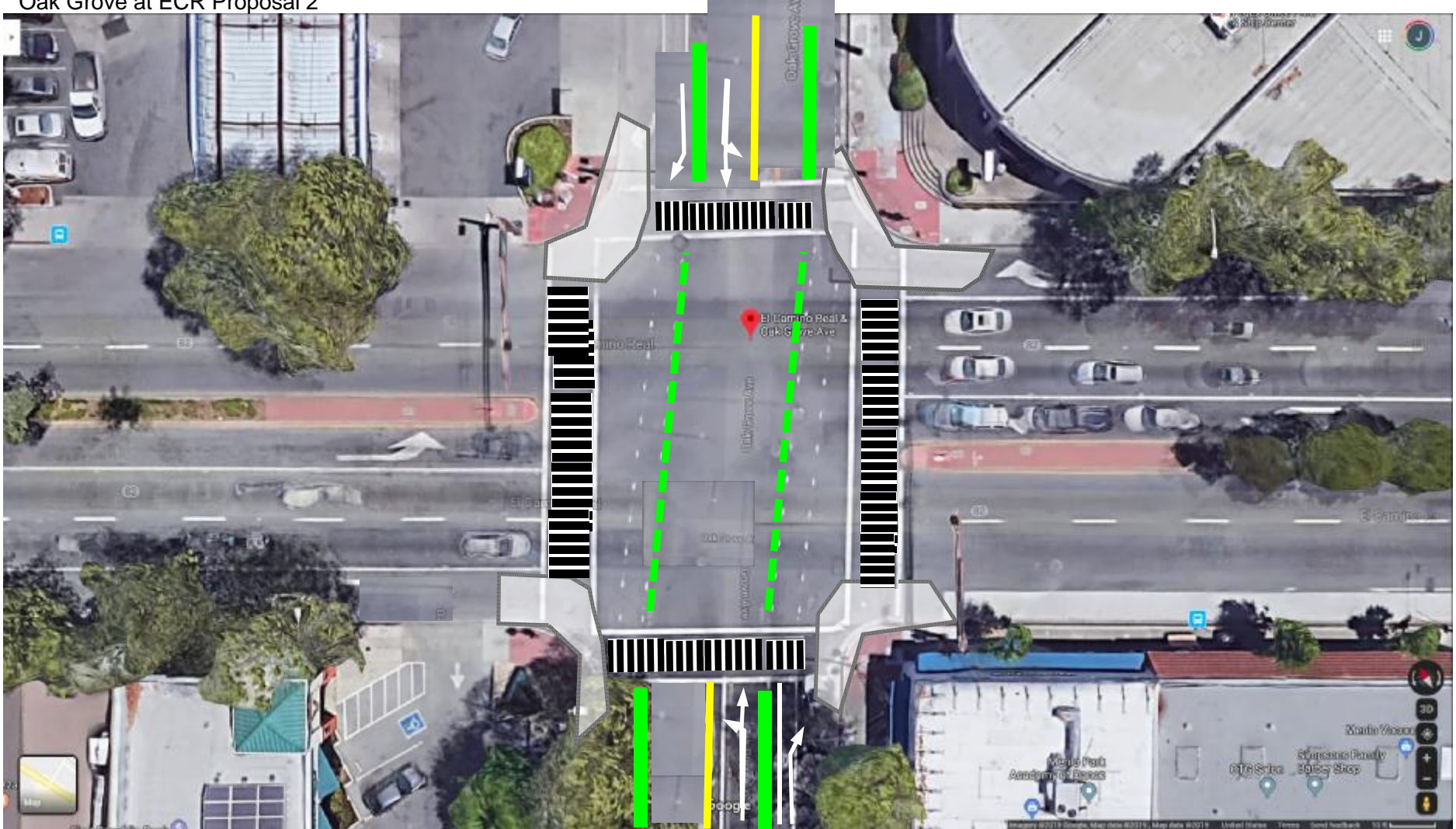
Oak Grove at ECR Proposal 1



Keep Oak Grove lanes as is. Results in shorter ECR crossings.
Note: may not be feasible if right turn lanes are heavily used.

Oak Grove

Oak Grove at ECR Proposal 2



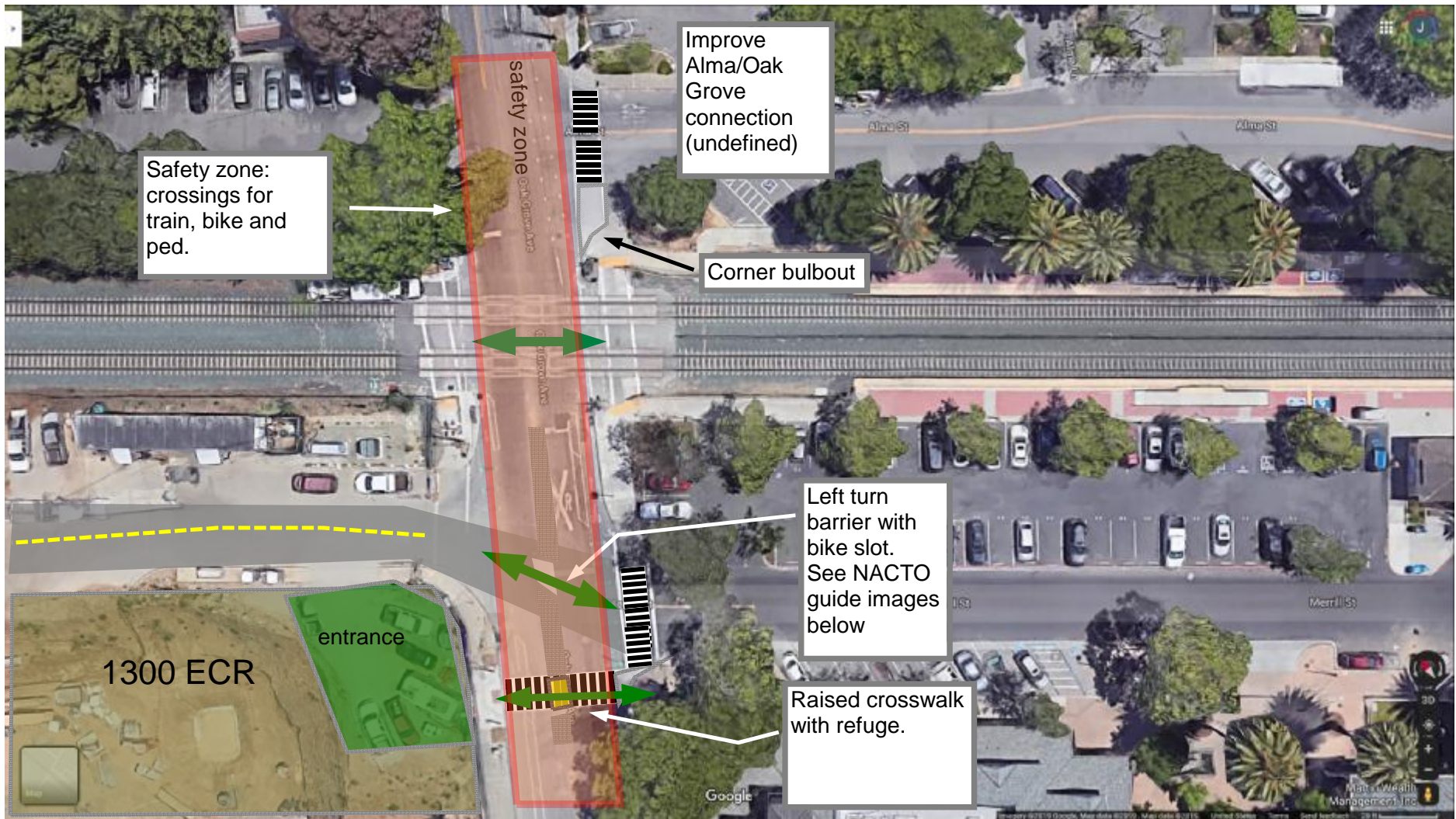
Change Oak Grove lanes from 3 to 2.. Results in shorter ECR crossings and shorter Oak Grove crossings.
Note: assumes similar traffic counts as Santa Cruz Ave. Crossing data not yet analyzed.

Oak Grove

Oak Grove at Merrill existing



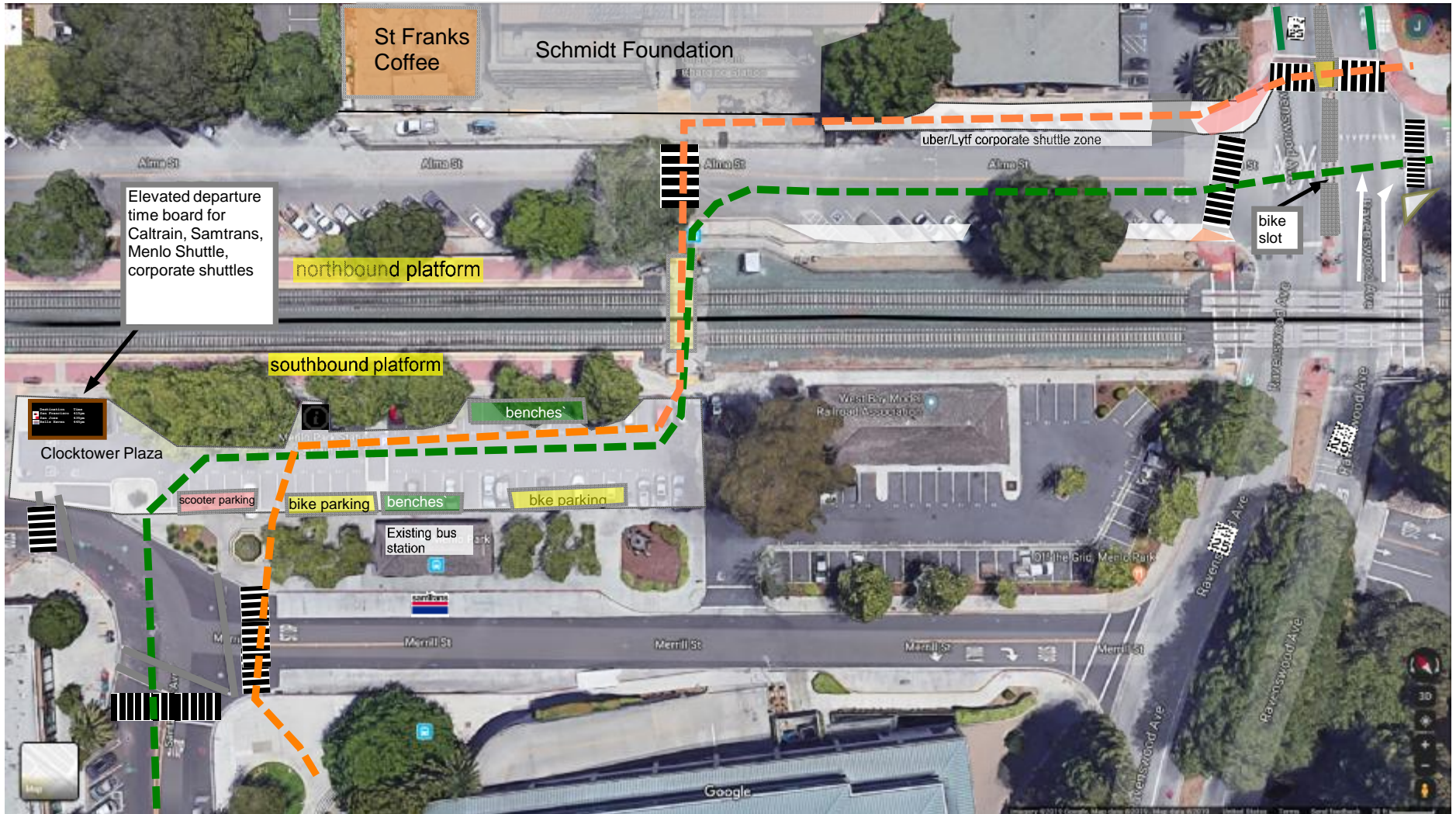
Oak Grove at Merrill proposed



Menlo Park Station existing



Menlo Park Station proposed - convert 60 Caltrain parking spaces to plaza



- bike route
- ped route

Amenities include: seating, bike parking, scooter parking, departure board, information kiosk
 Possible events: Off the Grid, farmers market, other civic events.
 Create plaza Business Improvement District to compensate Caltrain for lost parking revenue, provide sanitation, security and programming.
 155 parking spaces total. March 2017: 43% occupancy, June 2017: 62% occupancy

<https://kevin.burke.dev/rawblog/images/2017-06-caltrain-parking-occupancy.pdf>

Caltrain Holiday Event and other city events could benefit from public plaza.



THIS PAGE INTENTIONALLY LEFT BLANK

Connected + Walkable Downtown and Station Area

The Specific Plan establishes a rich, unifying and coordinated network of enhanced sidewalks, a pedestrian paseo (a public path designed for walking), plazas and parks, connecting Fremont Park to the west to the station area and Civic Center to the east (See Figure D2).

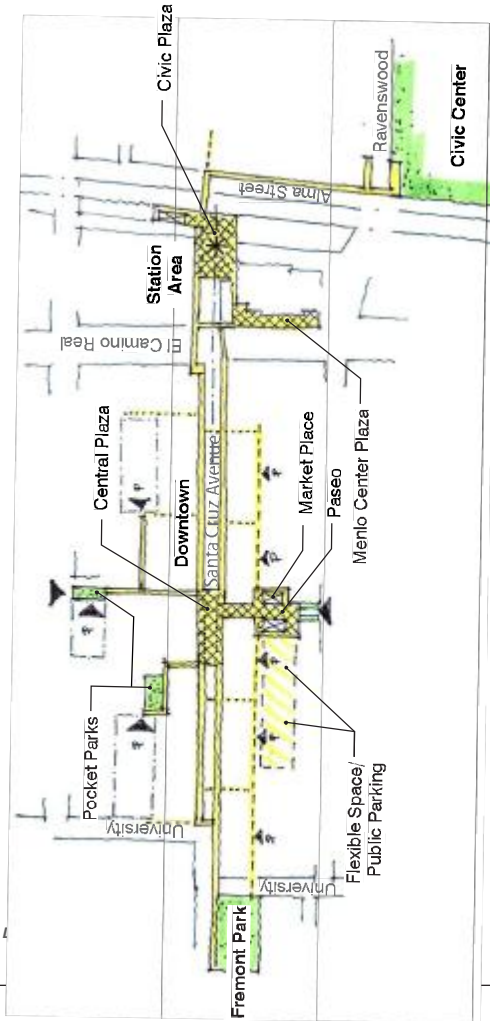


Figure D2

D4



Connected and walkable downtown (San Francisco, California)

Burgess Park bike/ped path improvements



Park paths should be widened to 15' for shared bike/ped use making sure not to impact fields

Burgess Park looking toward Ravenswood through Menlo Gates



Extend park path across Ravenswood to Caltrain station to strongly connect the two areas.
CSC Active Transportation Networks

Potential Partners

CSC
EQC
Park/Rec Comm
Library Comm
Menlo Spark
SVBC
Chamber of Commerce
Parents for Safe Routes
Menlo Together
Menlo Swim & Sport

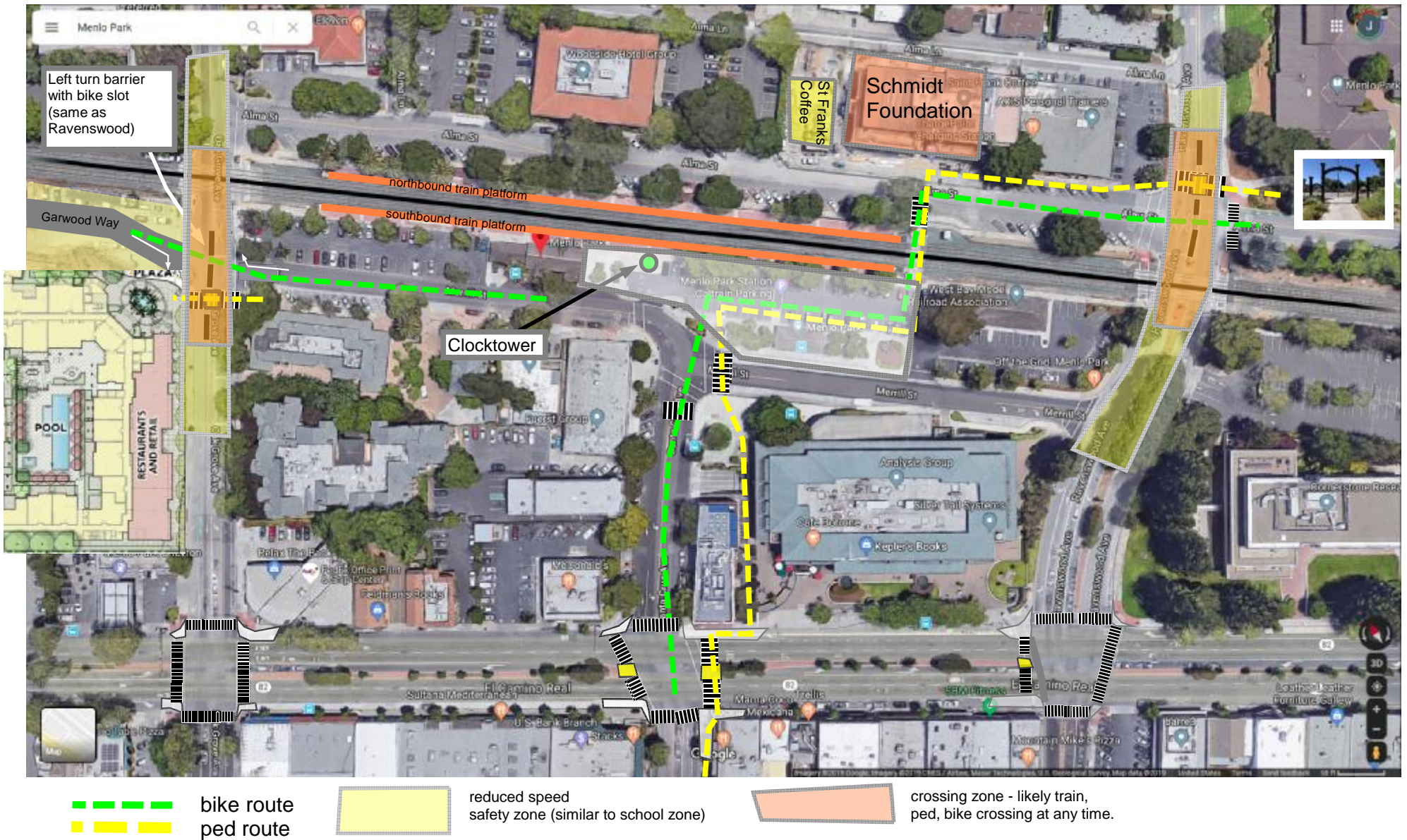
Sub-project priority (quick-build)

Alma/Ravenswood crossing
Oak Grove/Merrill crossing
Santa cruz crossing
Oak Grove/ECR crossing
Ravenswood/ECR crossing
Clocktower Plaza

City Policy

Downtown Specific Plan
TMP
Complete Streets
Vision Zero
Safe Routes to School

Station Area overview proposed



Path traverses both Caltrain platforms, bus stations, Borrone/Keplers
 Well-defined path for peds and bikes connects downtown to Burgess via Caltrain station.