

Environmental Quality Commission



REGULAR MEETING MINUTES

Date: 3/15/2017
Time: 6:30 p.m.
City Hall/Administration Building
701 Laurel St., Menlo Park, CA 94025

A. Chair Martin called the meeting to order at 6:34 p.m.

B. Roll Call

Present: Allan Bedwell, Chris DeCardy, Joyce Dickerson (arrived 6:38 p.m.), Vice Chair Janelle London, Chair Deb Martin Scott Marshall, Christina Smolke (arrived 6:37 p.m.)

Staff: Clay Curtin, Assistant to the City Manager/Interim Sustainability Manager
Vanessa Marcadejas, Senior Sustainability Specialist

C. Public Comment

No one from the audience provided public comment.

D. Regular Business

D1. Informational presentation on the San Francisquito Creek Joint Powers Authority's current flood control projects

Project Manager Tess Byler and Senior Project Manager Kevin Murray of the San Francisquito Creek Joint Powers Authority provided a presentation to the commission.

D2. Make a determination on an appeal for three coast redwood heritage trees at 9 Hesketh Drive

City Arborist Christian Bonner provided a brief overview of his evaluation of the tree and his reasons for approving the removal permit.

Appellant John Fox provided a presentation to the commission and stated his opposition to the removal due to the negative aesthetic impact it would have on the neighborhood canopy. Mr. Fox also spoke about his efforts to work with the property owner and surrounding neighbors on mitigation options.

Property owner Karen Wang stated that her original intent was to keep the trees, but they are causing property damage resulting in her family's underutilization of the backyard. She also stated that she had spent time collaborating with neighbors on potential mitigation options for retaining the trees, but a resolution was not reached.

Public comment on the item:

- Yvonne Murray stated support for the appeal to retain the trees.

- Kirk Gould stated his interest in maintaining the neighborhood canopy's character and was undecided on retaining or removing the trees.
- Besty Nash stated support for the appeal to retain the trees. She also read a letter from her husband, Horace Nash, stating support for the appeal to retain the trees.

ACTION: Motion and second (Bedwell/DeCardy) to deny the appeal and uphold staff's recommendation to remove the trees based on the heritage tree criteria stated in the staff report, passes (6-1, Naves: London)

Commissioner Smolke left the meeting at 8:47 p.m.

- D3. Discuss and potentially select a representative to the Oversight and Outreach Committee of the Bedwell Bayfront Park Master Plan project

Commissioner Bedwell recused himself from the meeting for this item at 8:50 p.m.

Clay Curtin provided an update to the commission.

ACTION: Motion and second (Martin/Dickerson) to select Vice Chair London as the representative to the Oversight and Outreach Committee of the Bedwell Bayfront Park Master Plan project, with Chair Martin as the backup representative passes (5-0-2, Absent: Smolke, Bedwell)

Commissioner Bedwell returned to the meeting at 8:56 p.m.

- D4. Discuss Arbor Day tree planting event

Clay Curtin provided an update to the commission, including the Mayor's request for a tree planting the first week of April. Mr. Curtin also stated staff's commitment to supporting an additional tree planting later in the month, if needed.

Several commissioners stated that they were unavailable for the Mayor's event. The commission expressed an interest in continuing to hold the annual Arbor Day tree planting event and discussed potential tree planting locations for an event later in April. Chair Martin stated she would continue to work with staff in coordinating the event.

- D5. Approve Feb. 22, 2017, Environmental Quality Commission meeting minutes

ACTION: Motion and second (DeCardy/London) to approve the Feb. 22, 2017, meeting minutes passes (5-0-1-1, Dickerson abstains; Absent: Smolke)

City Councilmember Ray Mueller, liaison to the Environmental Quality Commission, joined the meeting at 9:21 p.m.

E. Reports and Announcements

- E1. Commissioner reports

Commissioner Marshall provided an update on the Feb. 27 tree tour with PG&E which highlighted

some of the public street trees planned for removal as part of the California Pipeline Safety Initiative.

Vice Chair London updated the commission on her meeting with Diane Bailey from Menlo Spark to discuss the Peninsula Advanced Energy Community grant and expressed interest in inviting Ms. Bailey to provide an update at the next Environmental Quality Commission meeting.

Vice Chair London also updated the commission on the Green Ninja program, which incorporates science and environmental awareness curriculum to middle schools, and expressed interest in inviting Green Ninja to provide an informational presentation at a future Environmental Quality Commission meeting.

Chair Martin announced that the Climate Action Plan subcommittee was planning to meet soon.

Chair Martin also announced that her term on the Environmental Quality Commission ends April 30, 2017, and that she was still determining whether to reapply.

Commissioner DeCardy left the meeting at 9:35 p.m.

E2. Staff updates

Vanessa Marcadejas updated the commission on the status of the heritage tree ordinance update project. Staff will soon select a consultant for the project, pending the completion of consultant interviews March 24, 2017.

E3. Future agenda items

- PG&E's proposed tree removal mitigation plan related to the California Pipeline Safety Initiative program
- Community Zero Waste Plan recommendation to the City Council
- Update on Peninsula Advanced Energy Community projects
- Update on the Arbor Day Tree Planting event
- Update on the Earth Day event
- Update on Climate Action Plan progress and greenhouse gas emissions inventory
- Informational presentation on the Green Ninja program
- Update on Peninsula Clean Energy enrollments
- Update on Bedwell Bayfront Park Master Plan project

F. Adjournment

ACTION: Motion and second (Marshall/London) to adjourn the Environmental Quality Commission until the April 19, 2017, regular meeting passes (5-0-2, Absent: DeCardy, Smolke)

Chair Martin adjourned the meeting at 9:50 p.m.

Minutes prepared by Vanessa Marcadejas.



Upstream of Hwy. 101 EIR and SAFER

March 15, 2017 6:30 p.m.

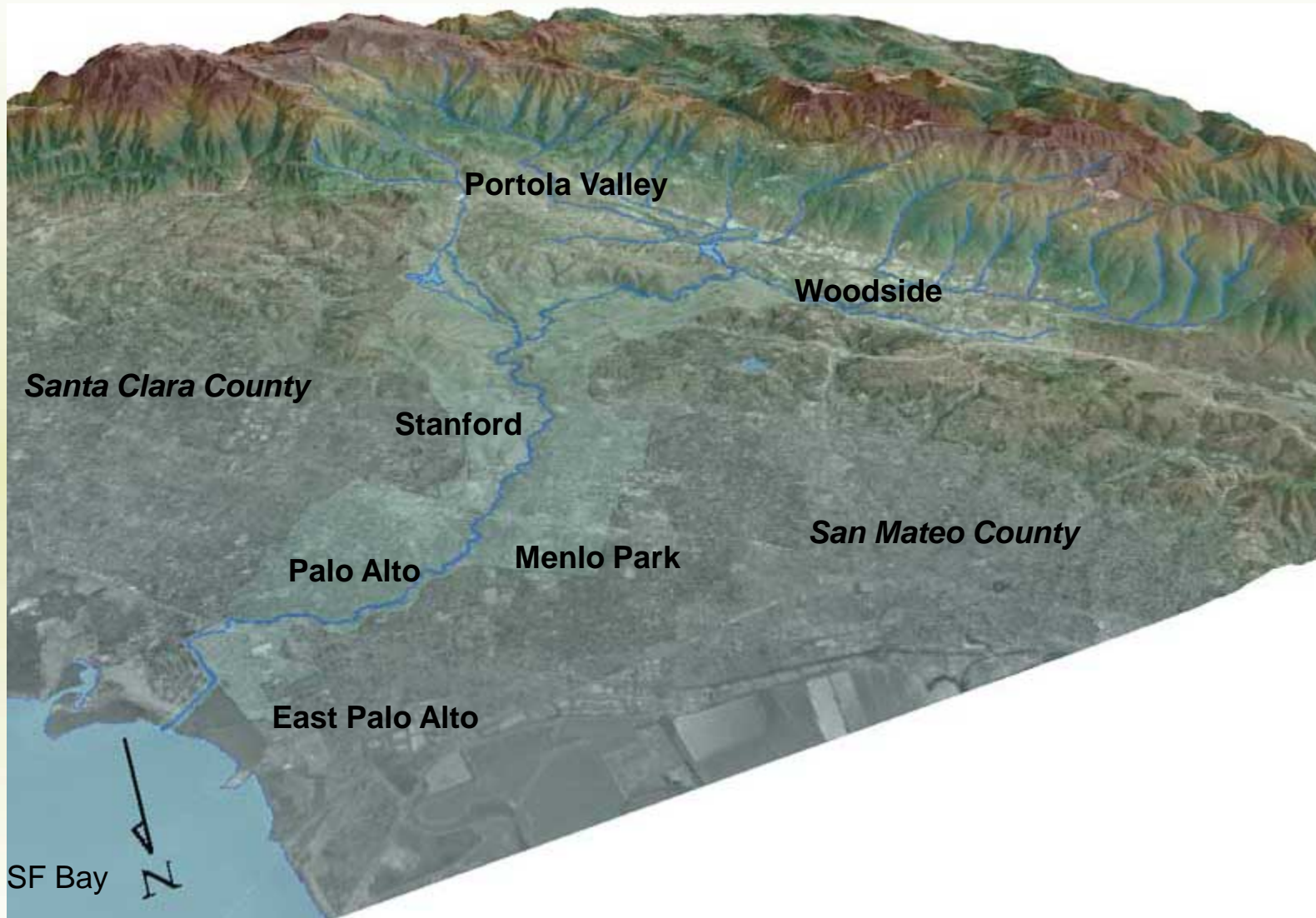
Menlo Park Environmental Quality Commission

Outline

- 1. Overview of SFCJPA**
- 2. Description of Current Projects: Downstream, SAFER and Upstream**
- 3. Upstream EIR**
- 4. Challenges and Constraints**
- 5. Comments/Questions**



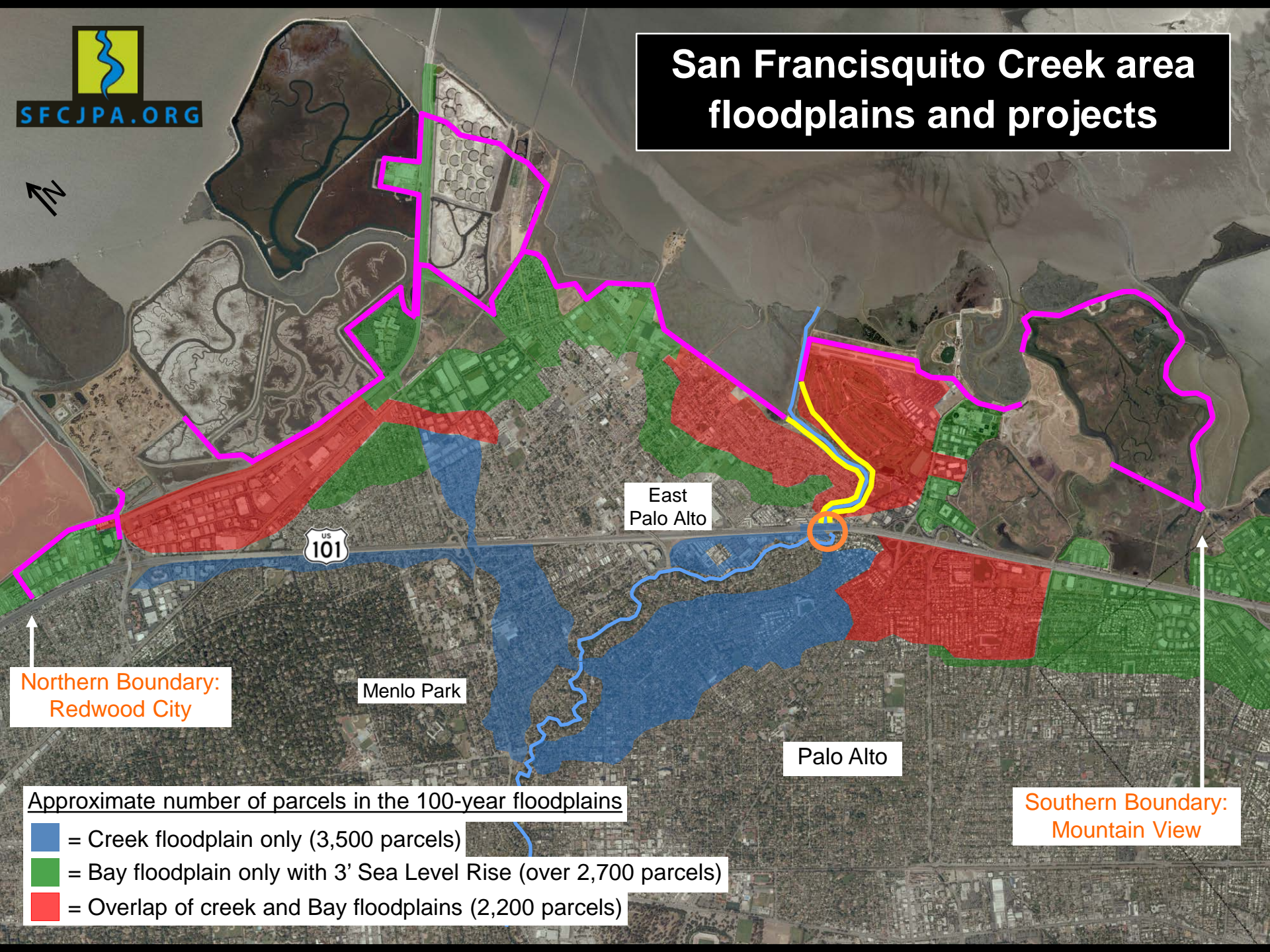
San Francisquito Watershed






SFCJPA Formed of Need



San Francisquito Creek area floodplains and projects



Approximate number of parcels in the 100-year floodplains

-  = Creek floodplain only (3,500 parcels)
-  = Bay floodplain only with 3' Sea Level Rise (over 2,700 parcels)
-  = Overlap of creek and Bay floodplains (2,200 parcels)



Fluvial Project Summary

Phase 1: S.F. Bay to Highway 101- under construction

Phase 2: Highway 101 overcrossing (Caltrans project)- under construction

Phase 3: Upstream of Highway 101



Phases represent construction phasing in chronological order, beginning the summer of 2011

1849



2100



Source: Will Travis

SAFER Bay Project

Report available at

www.sfcjpa.org

*Working on adjacent
alignments in Palo Alto*

Planning for next steps



Public Draft Feasibility Report

SAFER Bay Project

Strategy to Advance
Flood protection, Ecosystems and
Recreation along San Francisco Bay

East Palo Alto and Menlo Park

(Task Order 1)

October 2016



SFCJPA.ORG

San Francisquito Creek
Joint Powers Authority

615 B Menlo Avenue
Menlo Park, CA 94025



Upstream of Highway 101

Recent Public meetings:

- January 18, 2017 in Menlo Park
- January 26, 2017 in East Palo Alto
- January 31, 2017 in Palo Alto
- February 1, 2017 at 7:00 PM, Menlo Park City Council Chambers

Deadline for comments was March 10, but we intend to continue a robust stakeholder process



JPA EIR & Corps EIS

We are in partnership with the Corps of Engineers to preserve the possibility that the federal government will cost-share construction, to bring federal permitting agencies into project planning sooner, and to advance certification of a reduced FEMA floodplain after the project.

The scopes of the SFCJPA's EIR and Corps' Environmental Impact Statement are slightly different. **If the preferred project in each document differs, the project that will be built is the locally preferred project.**

For project features analyzed in both documents, if the SFCJPA begins construction before federal funding is appropriated, we will seek credit from the federal government towards later construction.

Revised Notice of Preparation

Draft Environmental Impact Report

San Francisquito Creek Flood Protection, Ecosystem Restoration, and Recreation Project

Upstream of Highway 101

This notice announces that a Draft Environmental Impact Report (EIR) will be prepared for the San Francisquito Creek Flood Protection, Ecosystem Restoration, and Recreation Project, Upstream of Highway 101 (Project) to identify, evaluate, and disclose possible environmental impacts, and to develop strategies to avoid, reduce, or compensate for any significant impacts.

DEPARTMENT OF DEFENSE

Department of the Army, Corps of Engineers

Intent To Prepare an Integrated Feasibility Study/Environmental Impact Statement for the San Francisquito Creek Flood Risk Management Study, San Mateo and Santa Clara Counties, CA

AGENCY: Department of the Army, U.S.
Army Corps of Engineers, DOD.

ACTION: Notice of intent.

SUMMARY: The Department of the Army and the San Francisquito Creek Joint Powers Authority (SFCJPA) hereby give notice of intent to prepare an integrated Feasibility Study/Environmental Impact Statement (FS/EIS) for the San Francisquito Creek Flood Risk Management Project in San Mateo and Santa Clara Counties, CA to consider opportunities to reduce fluvial flooding, to reduce the risk to public safety due



Upstream: Evaluating Alternatives

EIR/EIS objective: to evaluate the environmental impacts of project alternatives that can meet the community's objectives and can minimize those impacts

Scoping meeting objective: to briefly describe the scope of the SFCJPA EIR/EIS, and to receive public comments on:

- our proposed project objectives
- the potential environmental impacts we propose to analyze
- if we should study additional technically feasible alternatives for how well they meet project objectives and minimize impacts.



Specific project objectives

- **protect property and infrastructure from floodwaters exiting the creek, while minimizing impacts to adjacent communities and the environment;**
- **enhance habitat within the Project area, particularly inter-connected habitat for threatened and endangered species;**
- **create new recreational opportunities and connect to existing bike and pedestrian corridors;**
- **minimize operational and maintenance requirements; and**
- **identify alternatives that would not preclude future actions to increase cumulative flood protection.**



More simply, our objective is...

To pursue a near-term project that is:

Meaningful.

It does not rely on future work to protect against a repeat of the largest flow ever recorded. It does not preclude future work to add protection later.

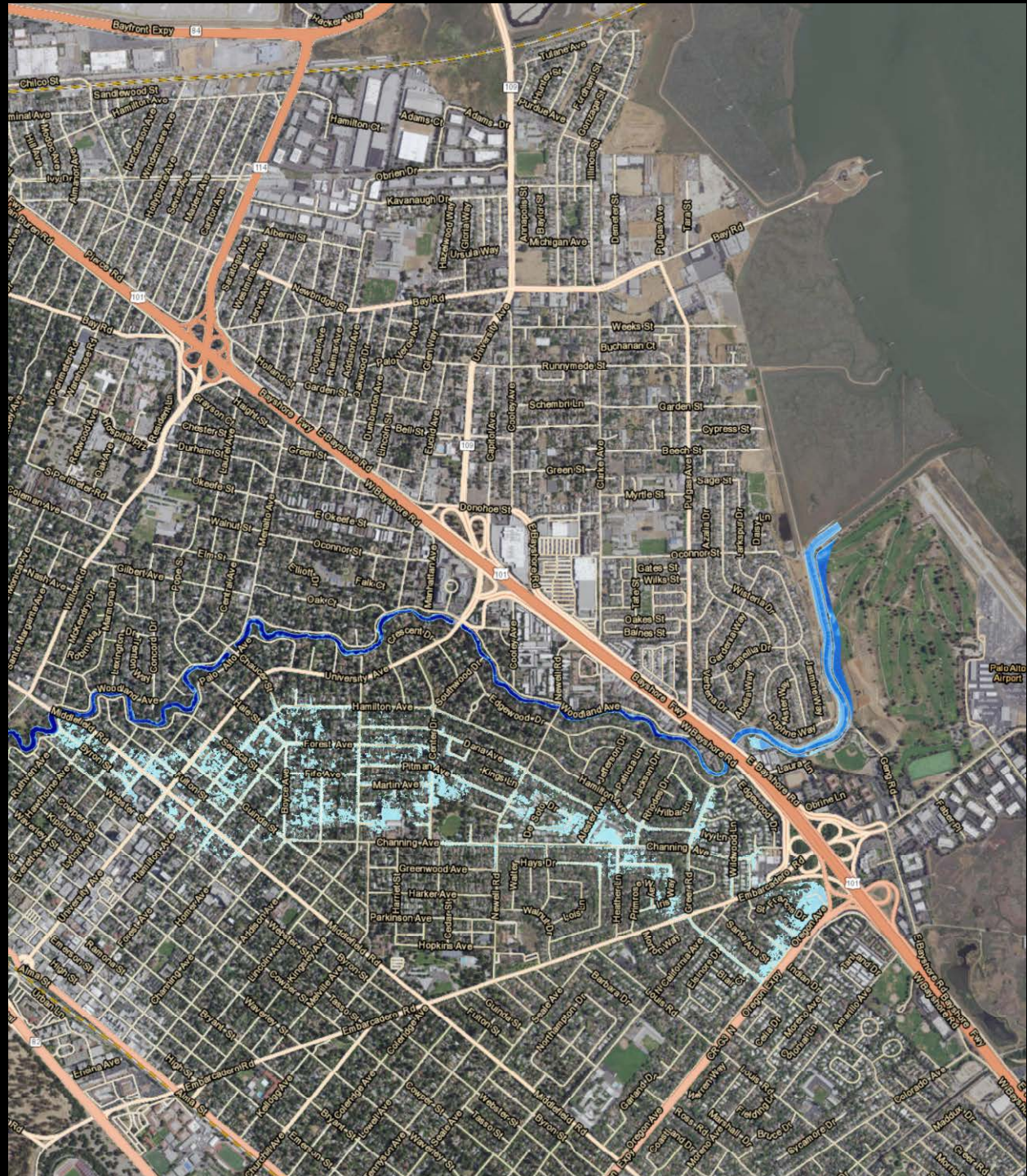
Achievable.

With strong community support, sufficient funding, land rights, and regulatory permits.

**Modeled floodplain
of 1998 sized event**

**Before project
upstream of Hwy. 101
is constructed**

**After project
upstream of Hwy. 101
is constructed**





Potential impacts to be evaluated

- **Aesthetics**
- Air Quality
- **Biological Resources and Riparian Habitat**
- Climate Change
- Geology and Soils Hazards and Hazardous Materials
- Hydrology and Water Quality
- **Land Use and Private Property**
- **Construction Noise** and Vibration
- Paleontological, Archaeological & Architectural Resources
- Recreation and trails
- **Traffic** and Transportation
- Utilities and Public Services



Alternatives we propose to study

Alternative 1	No Action
Alternative 2	Replace Pope-Chaucer Bridge and widen channel in specific locations between Newell Bridge & Euclid Ave.
Alternative 3	Construct one or more upstream detention basins.
Alternative 4	Construct an underground bypass culvert.
Alternative 5	Construct floodwalls along the channel.

Alternative 2 (bridge and bottlenecks)

Maximize channel capacity without major new structures

- Widen creek channel
- Replace Pope-Chaucer Bridge



Replacing Newell Bridge is a separate project of the City of Palo Alto

An aerial photograph showing a river flowing through an urban area. A multi-lane highway runs parallel to the river. A dashed orange line runs along the riverbank, indicating a project area. A solid cyan line runs parallel to the highway, indicating another project area. A yellow line runs parallel to the river, indicating a third project area. The image is overlaid with text boxes and lines.

CJPA Bay-Hwy. 101 project

CJPA upstream of Hwy. 101 project: widen channel just upstream of West Bayshore Road to connect to Caltrans work

Caltrans project

An aerial photograph showing a river flowing through an urban area. A multi-lane highway runs parallel to the river. A dashed orange line runs along the riverbank, indicating a project area. A solid cyan line runs parallel to the highway, indicating another project area. A yellow line runs parallel to the river, indicating a third project area. The river is surrounded by greenery and some buildings. The highway has several cars on it. The overall scene is a mix of natural and urban environments.

CJPA Bay-Hwy. 101 project

CJPA upstream of Hwy. 101 project: widen channel just upstream of West Bayshore Road to connect to Caltrans work

Caltrans project

An aerial photograph showing a river flowing through an urban area. A multi-lane highway runs parallel to the river. A dashed orange line runs along the riverbank, indicating a project area. A solid cyan line runs parallel to the highway, indicating another project area. A yellow line runs parallel to the river, indicating a third project area. The river is surrounded by greenery and some buildings. The highway has several cars and a truck. A large building with a blue roof is visible on the right side of the highway. A parking lot with several cars is visible on the left side of the highway. A residential area with houses and trees is visible in the bottom left corner. A text box in the top left corner reads "CJPA Bay-Hwy. 101 project". A text box in the top center reads "CJPA upstream of Hwy. 101 project: widen channel just upstream of West Bayshore Road to connect to Caltrans work". A text box in the bottom right corner reads "Caltrans project".

CJPA Bay-Hwy. 101 project

CJPA upstream of Hwy. 101 project: widen channel just upstream of West Bayshore Road to connect to Caltrans work

Caltrans project



Widening the creek channel



San Mateo County side

Santa Clara County side



Widening the creek channel



Woodland Avenue
East Palo Alto

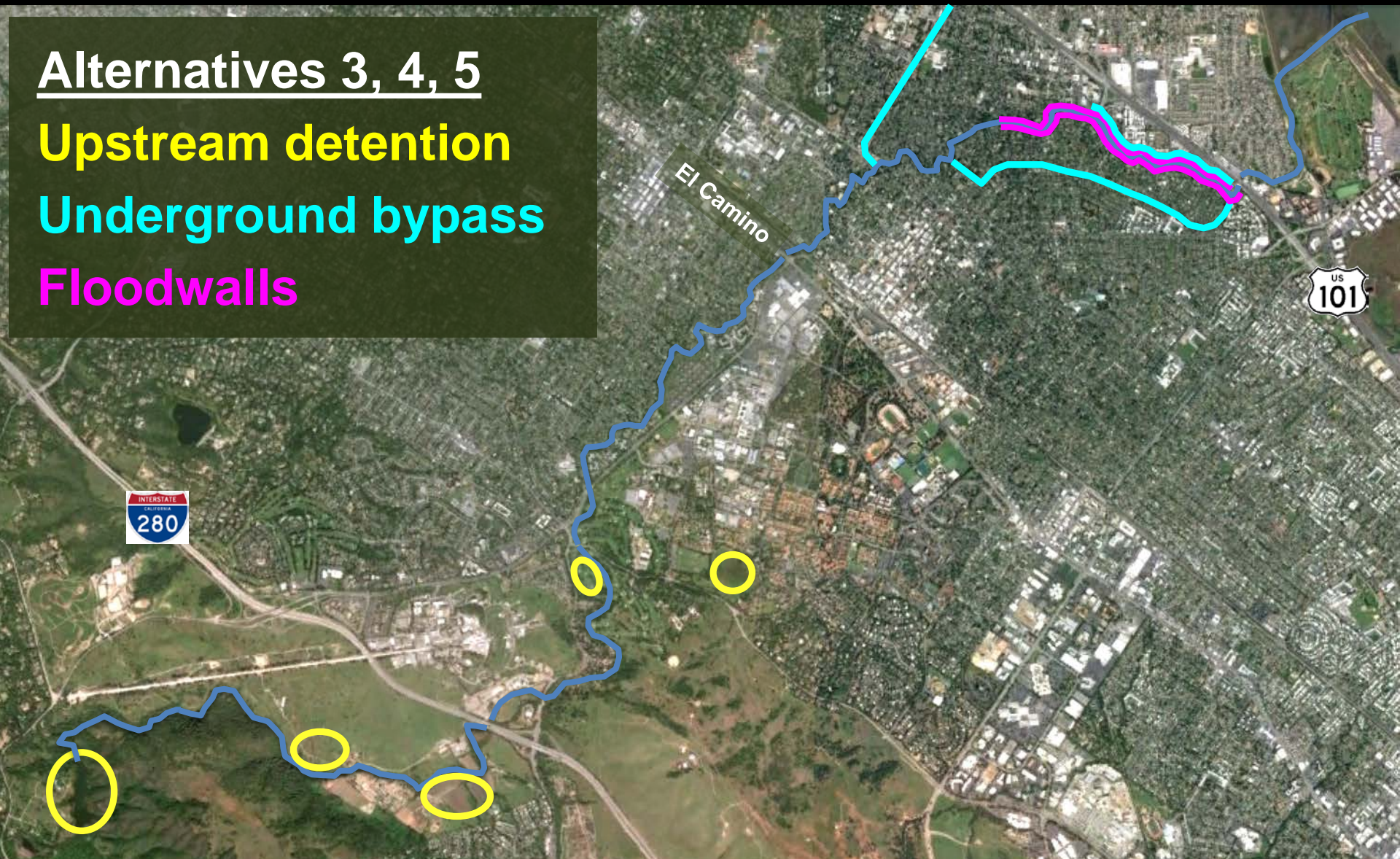
San Francisquito Creek Upstream of Highway 101 Project EIR

Alternatives 3, 4, 5

Upstream detention

Underground bypass

Floodwalls

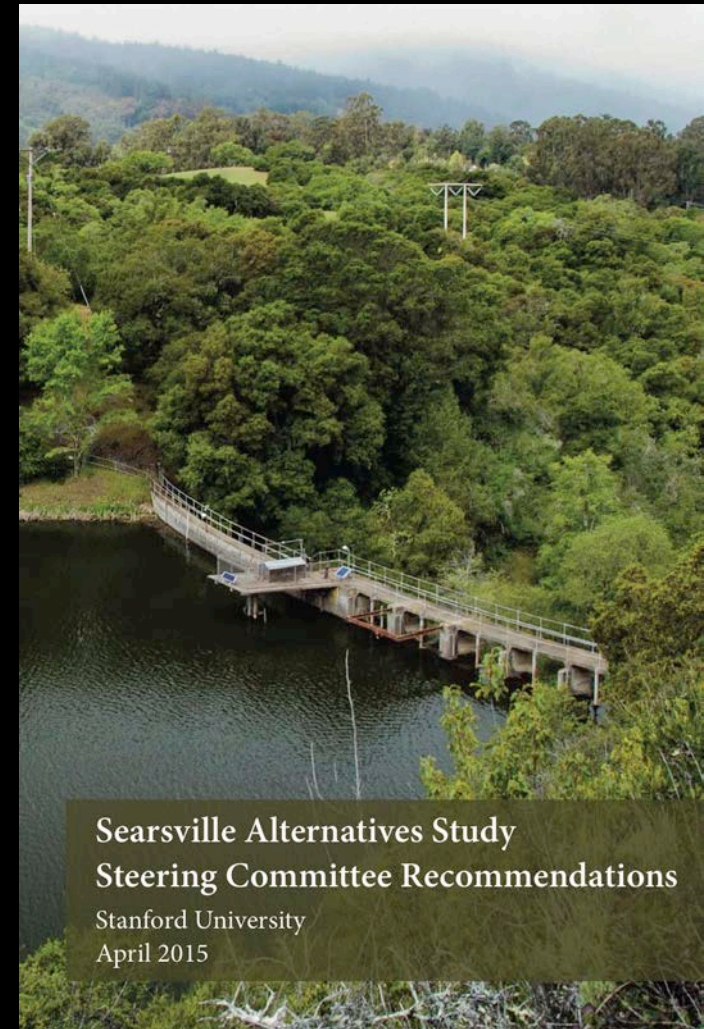


One potential upstream detention site to be discussed in the SFCJPA EIR: a Stanford project at Searsville

In April 2015, Stanford recommended the development of:

- a project to create an opening at the base of the dam and flush sediment in order to enable fish passage and attenuate high flows
- an alternate project of fish passage around dam

Since then, Stanford has continued to develop its recommendations and worked with environmental regulatory agencies. SFCJPA and its partners, including the Corps, have met and will continue to meet with Stanford to discuss the options and impacts of a Stanford project at Searsville in the context of SFCJPA projects.



Searsville Alternatives Study
Steering Committee Recommendations
Stanford University
April 2015



Challenges and Constraints

- Multijurisdictional complexity
- Constrained physical environment
- High habitat value
- Protected species
- Construction constraints: traffic, access etc.



Environmental Quality Commission

Proposal after discussions by three neighbor houses

J. Fox, Y. Murray, K. Gould

- J. Fox (1310 Elder) and Y. Murray, K. Gould (4 Elder Court) are concerned about removing 3 Redwoods from 9 Hesketh Dr.
- Our 4 lots have several big trees in various stages of health
- 3 Redwoods are the largest trees in our canopy
- These Redwoods screen a telephone pole and transformer
- We investigated options to remove power/telephone pole and underground power lines



SP McClenahan Arborist's Report

- K. Wang, J. Fox, Y. Murray and K. Gould met in September
- As neighbors, we wanted to find a mutual solution
- To look at the larger context, we asked Chris Regan (SP McClenahan Arboriculturists) to evaluate canopy and tree health context of neighborhood impact across our 4 lots
- Recommendation - remove 1 Redwood at 9 Hesketh Dr.
- Concerns with Monterey Pine (1310 Elder), two Redwoods (4 Elder Court)
 - Limited options to underground power line
 - Elder Ct access - injury to 2 Redwoods, Deadora Cedar
 - Elder Ave access - injury to healthy Deadora Cedars (1310 Elder, 5 Hesketh Dr)
- Chris Regan's suggestions
 - Live with power pole, use trees for screening
 - Recommendation - remove Monterey Pine, end of life
 - Suggested plantings (deciduous) to balance conifers

Discussions 3/9 and Suggested Plan

- K. Wang , J. Fox, Y. Murray and K. Gould met 3/9
- K. Wang - not certain of landscape plans, pool future?
- All agree - bare canopy with only a transformer pole is the worst outcome
- Our tentative proposal
 - 9 Hesketh Dr
 - Remove 1 Redwood
 - Preserve 2 Redwoods, future decisions based on Redwood health and landscape plans
 - Plan future loss of Monterey Pine (1310 Elder)
 - 4 Elder Ct, 1310 Elder - plant deciduous trees for screening consistent with overhead wires
 - Encourage 5 Hesketh Dr. to plant screening trees

Additional material

- pool functionality at 9 Hesketh Drive
 - All pools require maintenance and repair of equipment
 - Pool pump equipment could be relocated in yard
 - Per report "If the pool is to be removed this changes the situation"
- Menlo Park Criteria
- 13.24.025 Maintenance and preservation of heritage trees.
 - (6) The number, size, species, age distribution and location of existing trees in the area and the effect the removal would have upon shade, privacy impact and scenic beauty;
 - (7) The number of trees the particular parcel can adequately support according to good arboricultural practices;
 - (8) The availability of reasonable and feasible alternatives that would allow for the preservation of the tree(s).

Photos from Neighbor lots



J. Fox, Y. Murray, K. Gould



Redwood Trees 9 Hesketh Drive