



REGULAR MEETING AGENDA

Date: 7/18/2022
Time: 6:30 p.m.
Location: [Zoom.us/join](https://zoom.us/join) – ID# 881 8270 5426

NOVEL CORONAVIRUS, COVID-19, EMERGENCY ADVISORY NOTICE

Consistent with Government Code section 54953(e), and in light of the declared state of emergency, and maximize public safety while still maintaining transparency and public access, members of the public can listen to the meeting and participate using the following methods.

- How to participate in the meeting
 - Access the meeting real-time online at:
[Zoom.us/join](https://zoom.us/join) –Meeting ID# 881 8270 5426
 - Access the meeting real-time via telephone at:
(669) 900-6833
Meeting ID# 881 8270 5426
Press *9 to raise hand to speak

Subject to Change: Given the current public health emergency and the rapidly evolving federal, state, county and local orders, the format of this meeting may be altered or the meeting may be canceled. You may check on the status of the meeting by visiting the City’s website www.menlopark.org. The instructions for logging on to the Zoom webinar and/or the access code is subject to change. If you have difficulty accessing the Zoom webinar, please check the latest online edition of the posted agenda for updated information (menlopark.org/agenda).

Regular Meeting ([Zoom.us/join](https://zoom.us/join) – ID# 881 8270 5426)

A. Call To Order

B. Roll Call

B1. Introduce new Commissioner Sarah Zasslow

C. Public Comment

Under “Public Comment,” the public may address the Library Commission on any subject not listed on the agenda. Each speaker may address the Library Commission once under public comment for a limit of three minutes. Please clearly state your name and address or political jurisdiction in which you live. The Library Commission cannot act on items not listed on the agenda and, therefore, the Commission cannot respond to non-agenda issues brought up under public comment other than to provide general information.

D. Regular Business

D1. Approve minutes from the May 16, 2022 meeting of the Library Commission, and the June 22, 2022 joint meeting of the Library Commission and the Parks and Recreation Commission ([Attachment](#)) (5 minutes)

E. Adjournment to annual commission appreciation dinner

At every Regular Meeting of the Commission, in addition to the Public Comment period where the public shall have the right to address the Commission on any matters of public interest not listed on the agenda, members of the public have the right to directly address the Commission on any item listed on the agenda at a time designated by the Chair, either before or during the Commission's consideration of the item.

At every Special Meeting of the Commission, members of the public have the right to directly address the Commission on any item listed on the agenda at a time designated by the Chair, either before or during consideration of the item. For appeal hearings, appellant and applicant shall each have 10 minutes for presentations.

If you challenge any of the items listed on this agenda in court, you may be limited to raising only those issues you or someone else raised at the public hearing described in this notice, or in written correspondence delivered to the City of Menlo Park at, or prior to, the public hearing.

Any writing that is distributed to a majority of the Commission by any person in connection with an agenda item is a public record (subject to any exemption under the Public Records Act) and is available by request by emailing the city clerk at jaherren@menlopark.org. Persons with disabilities, who require auxiliary aids or services in attending or participating in Commission meetings, may call the City Clerk's Office at 650-330-6620.

Agendas are posted in accordance with Government Code §54954.2(a) or §54956. Members of the public can view electronic agendas and staff reports by accessing the City website at menlopark.org/agenda and can receive email notification of agenda and staff report postings by subscribing to the "Notify Me" service at menlopark.org/notifyme. Agendas and staff reports may also be obtained by contacting City Clerk at 650-330-6620. (Posted: 07/14/2022)



REGULAR MEETING MINUTES – DRAFT

Date: 5/16/2022
Time: 6:30 p.m.
Location: Zoom

A. Call To Order

Chair Erhart called the meeting to order at 6:35 p.m.

B. Roll Call

Present: Cohen, Erhart, Hadrovic, Leep, Singh

Absent: Velagapudi, Zasslow

Staff: Library and Community Services Director Reinhart, Assistant Library Director Szegda, Library and Community Services Supervisor Sheriann Chaw, Librarian II Rose Waldman, Child Care Teacher Zach Cantu, Senior Program Assistant Mayra Monje

C. Public Comment

None.

D. Presentations and Proclamations

D1. Presentation – Summer education programs: Camps

Library and Community Services Supervisor Chaw, Child Care Teacher Cantu, and Senior Program Assistant Monje made the presentation (Attachment).

D2. Presentation – Summer literacy programs: Summer reading

Librarian II Waldman made the presentation (Attachment).

D3. Presentation – Draft letter to library affiliate groups

Assistant Director Szegda made the presentation (Attachment).

E. Regular Business

E1. Approve minutes from the April 18, 2022 meeting of the Library Commission

ACTION: Motion and second (Hadrovic/ Cohen), to approve minutes from the March 21, 2022 meeting of the Library Commission, passed 5-0 (Velagapudi and Zasslow absent).

E2. Selection of Commission Chair and Vice Chair

ACTION: Nomination by Hadrovic to select Commissioner Cohen as Commission Chair, passed 4-0 (Leep, Velagapudi and Zasslow absent).

ACTION: Nomination by Hadrovic to select Commissioner Singh as Vice Chair, passed 5-0 (Velagapudi and Zasslow absent).

F. Informational Items

F1. Onboarding new Commissioners

Assistant Director Szegda introduced the item.

F2. Library Commission agenda calendar

ACTION: By acclamation, the following items were added to the Commission's agenda calendar:

- June – Joint meeting with Parks and Recreation Commission
 - Architect presentation on sustainability features of Menlo Park Community Center (MPCC) project
 - Preliminary results of the Community Survey

F3. Department updates

Assistant Director Szegda reported that in-person English Conversation Club meetings will begin on May 24 at the Main Library. The City Council will receive an update on the operation plan milestones for the MPCC project, and a report on the draft of the community program survey at their meeting on May 24.

G. Commissioner Reports

G1. Individual Commissioner reports

None.

H. Adjournment

Chair Erhart adjourned the meeting at 7:51 p.m.

Nick Szegda, Assistant Director of Library Services

D1 - Presentation



**CITY OF MENLO PARK
SUMMER CAMP PROGRAMS 2022**

ANNIEBACA FAMILY
GYMNASIUM

OVERVIEW

- Welcome
- Camp From the Outside
- Camp From the Inside Out
- Summer Camp Program Descriptions
- Questions
- Contact Information





SUMMER CAMP PROGRAMS FROM THE OUTSIDE LOOKING IN



For Families:

- We provide a Safe and Healthy Care and Learning Environment so they can go to work knowing their children are having fun.

Daily Activities:

- Arts and Crafts
- STEM Activities
- (Science, Technology, Engineering, and Mathematics)
- Summer Reading Program

Weekly Activities:

- Swimming
- Water Play
- Special Guests
- Field Trips
- Cooking Projects



SUMMER PROGRAMS FROM THE INSIDE OUT



What is summer camp really about?

YOUTH DEVELOPMENT

Giving youth opportunities to develop social- emotionally, physically, and cognitively to meet the challenges of adolescence and adulthood and giving them the tools to meet their full potential.



WHAT IS YOUTH DEVELOPMENT?

As children grow and develop, they need support along the way to develop holistically in mind, body, and spirit.

Our Summer Programs:

- **Support their cognitive milestones by:**
 - Providing activities which stimulate their curiosity to continue learning through STEAM Activities, games, and problem solving.
- **Support their social emotional milestones by:**
 - Helping them love to learn
 - Form positive peer and adult relationships.
 - Engage in activities that strengthen their ability to navigate social situations.
- **Support their physical growth:**
 - Provide nutritious AM/PM Snacks (Camp Menlo will also be provided lunch.)
 - Provide for opportunities for physical activities through games and activities.



MIDDLE CAMP CONTINUES EXPANDING THEIR DEVELOPMENT...

Cognitively:

- Engages youth in self-directed learning through more complicated and engaging STEAM activities.

Physically:

- Engages them in positive physical activity
- Establishes resistance to risk-taking activities.

Social-Emotionally:

- Provides them with a mentor.
- Has positive peer influences
- Participates in community and leadership building activities.
- Has the youth think about the bigger picture, to create a plan, to investigate.

SUMMER CAMP PROGRAMS

■ Camp Menlo and Menlo Mania

- Serving Kindergarten through 5th Grade, 8 AM-5:30 PM
- Two Campuses:
 - Camp Menlo located at Belle Haven Youth Center @100 Terminal Ave.
 - Menlo Mania located at Menlo Children's Center @801 Laurel St.
 - Combined activities throughout the summer between campuses.

■ Beechwood Elementary Summer Camp

- Serving Children from Beechwood Elementary after their school day at our Camp Menlo Campus, 3:00 PM-5:30 PM

■ Middle Camp

- Serving rising 6th through 8th Grade stationed at Belle Haven Library 413 Ivy Dr., 9:00 AM-4:30 PM

SUMMER CAMP DATES

- **We have four sessions total each session consist of two weeks.** (Middle Camp starts at Session 2)

Session 1

- **Week 1: June 21- June 24 *No camp June 20, 2022**
- **Week 2: June 27-July 1**

Session 2:

- **Week 3: July 5- July 8 * No Camp July 4, 2022**
- **Week 4: July 11- July 15**

Session 3:

- **Week 5: July 18- July 22**
- **Week 6: July 25- July 29**

Session 4:

- **Week 7: August 4-8**
- **Week 8: August 11-15**



QUESTIONS



www.menlopark.org/summercamps

Contacts:

Mayra Monje, Acting Recreation Coordinator

mamonje@menlopark.org

(650) 330-2297

Zack Cantu, Acting Program Assistant

zgcantu@menlopark.org

(650) 330-2293

Sheriann Chaw, Library and Community Services Supervisor

sjchaw@menlopark.org

(650) 330-2249



D2 - Presentation



**SUMMER READING GAME & SUMMER
LITERACY AT CAMPS AND SCHOOLS**



WHY SUMMER READING?

Multiple studies have shown that reading for fun during the summer months helps children retain and improve their reading proficiency when they are away from the classroom and not participating in formal literacy programs.



THE SUMMER READING GAME

The Summer Reading Game is open to all ages. Anyone can participate and win prizes!

Play along with us June 1–August 31!

HOW IT WORKS

- Register online at menlopark.beanstack.org and stop by in person to pick up a free gift
- Meet your reading goals to earn badges and enter prize raffles
- Enjoy free in-person and virtual events throughout the summer
- Complete the challenge by August 31 for more prizes



SUMMER READING GAME DETAILS

1. Beanstack

2. Prizes:

- Incentive and finishing books
- Entry into raffles

3. Events:

- Thursdays & Saturdays
- Teens

4. Outreach

5. Find out more:

www.menlopark.org/summerreading

June 1 - August 31, 2022



Welcome to the Menlo Park Summer Reading Game! Track your reading, discover great books, do activities, and earn prizes!

The Summer Reading Game is open to all ages; anyone can play and be eligible for our raffle prizes!



How It Works

1

Register or sign in to earn your first badge between June 1 and August 31!

2

Log your reading and activities online or with the Beanstack mobile app!

3

Collect your registration gift books, earn badges for reading and activities, and reach your reading goals to get rewards!



SUMMER LITERACY IN CAMPS AND SCHOOLS

Summer Camps (4 2-week sessions)

- Camp Menlo (located at Onetta Harris)
 - Grades K-2
 - Grades 3-5
- Menlo Mania (located at the Menlo Children's Center)
 - Grades K-2
 - Grades 3-5

Summer Pre-Schools (run all summer)

- Menlo Children's Center
 - 3 classrooms, divided by age
- Belle Haven Child Development Center
 - 4 classrooms, not divided by age



THE STRUCTURE: WHAT WE ARE KEEPING FROM 2021

1. Classroom-friendly Summer Reading Game
 - Camps: same badge book as public
 - Schools: simplified paper log
2. Storytime for preschoolers and kindergarten-2nd graders
3. Prizes
 - Incentive
 - Finishing book & toy



THE STRUCTURE: WHAT WE ARE ADDING FOR 2022



1. Library visits!
2. “Big Kid” Activities for 3rd-5th graders



THANK YOU

D3 - Presentation



**DISCUSS DRAFT LETTER TO LIBRARY
AFFILIATE GROUPS**

BACKGROUND

- Groups that support the library and its efforts
 - Direct support
 - Friends of the Menlo Park Library – 501c3
 - Library Foundation – 501c3
 - Occasionally provides direct support
 - Literacy Partners Menlo Park (formerly “Project READ Literacy partners”) – 501c3
 - Other affiliates
 - Menlo Park Historical Association – shares space in library
- Library Commission has periodically extended presentation opportunities

COMMISSION INFORMATIONAL LIAISONS TO AFFILIATE GROUPS

- Attend affiliate group meetings
- Report back to full Commission
- Current appointments
 - Friends of the Library
 - Cohen/Lee (no longer on Commission)
 - Library Foundation
 - Hadrovic
 - Literacy Partners Menlo Park
 - Velagapudi
 - Menlo Park Historical Association
 - Hadrovic

DRAFT LETTER - INVITATION

- Thank affiliate groups for their work
- Offer an additional opportunity for information sharing beyond informational liaisons
- Offer an opportunity to present directly to the public
 - Commission meetings recorded – presentation could be referenced by affiliate group
- Present current accomplishments/challenges
 - Any issues/challenges post-COVID?
 - Any messages they would like Commissioners to bring to the community

Dear *Library Affiliate* [name, title],

Recently members of the Menlo Park Library Commission were reflecting on the craziness of the last two plus years of trying to keep commission work moving forward in an age of zoom-hosted public meetings and the loss of in-person communication. I can only imagine the challenges that you and the Friends of the Menlo Park Library have faced over this period.

The Library Commission wants to thank the Friends of the Menlo Park Library for the many projects and activities that have enriched the library experience for Menlo Park residents. We are particularly thankful for the way the Friends of the Menlo Park Library stepped up at the beginning of the pandemic and sustained that effort by providing resources for acquiring books and media through the books by mail program. The Friends of the Menlo Park Library have always been there to provide interesting and innovative library programming and by raising funds for the library through book sales.

The commission has realized that one benefit of the video meetings was the permanent recording of the meeting that was archived by the city. We see this as a unique opportunity to let Menlo Park residents have easier access to public meetings and the important information that comes from them.

We would like to offer time on the agenda at future Library Commission meetings for the Friends of the Menlo Park Library to share information of library community interest. We are hoping you will see an opportunity to leverage the public venue we have for connecting with Menlo Park residents. Please know there is no expectation of a report or formal presentation from your group nor is there any obligation for your group to make use of this offer. In order for us to manage agenda planning for our commission meetings, we would just ask that you reach out to Nick Szegda, at NJSzegda@menlopark.org, at least two weeks prior to a commission meeting; that way we can integrate your content with the rest of the commission's agenda items.

The Library Commission will be choosing a new chair and vice-chair this week. We are lucky to have one new commission member and one returning commissioner. Concurrent with selecting a new leadership team, the commission will be refreshing assignments for commission members to the library affiliate liaison roles. We would like the liaisons to attend the meetings of the affiliate they are assigned to and to provide a conduit for communication between the affiliate organizations and the commission. If there is an interest from your group for a visit from the new chair or vice-chair, please let us know. We are always looking for ways to increase engagement between the commission and the great affiliate groups that contribute so meaningfully to the community.

Thanks again for supporting the residents of Menlo Park and the community of library patrons and we hope you take us up on our offer. Looking forward to hearing from you soon.

Best regards,

Parks and Recreation Commission Library Commission



SPECIAL JOINT MEETING MINUTES – DRAFT

Date: 6/22/2022
Time: 6:30 p.m.
Location: Zoom

A. Call To Order

Library Commission Chair Cohen called the meeting to order at 6:35 p.m.

B. Roll Call

Library Commission

Present: Cohen, Erhart, Hadrovic, Singh (arrived 7:02 p.m.), Velagapudi

Absent: Leep, Zasslow

Parks and Recreation Commission

Present: Brosnan, Bryman, Bunyagidj, Diepenbrock, Joshua, Theriault

Absent: Baskin,

Staff: Library and Community Services Director Sean Reinhart, Acting Recreation Supervisor Rondell Howard, Assistant Library Services Director Szegda

C. Presentations and Proclamations

C1. Menlo Park Community Campus project environmental sustainability features

Hart Howerton representatives Jeff Till, Jon Swain, and Paul Mattingly made the presentation (Attachment).

C2. Preliminary results of Menlo Park resident survey – recreation and community programs

Director Reinhart made the presentation (Attachment).

- Brian Kissel requested clarification on the survey deadline and an additional survey focused on pickleball users.

D. Study Session

D1. Menlo Park Community Campus operational planning

Director Reinhart made the presentation (Attachment).

E. Informational Items

E2. Library and Community Services department proposed fiscal year 2022-23 operating budget

Director Reinhart introduced the item.

F. Commissioner Reports

Library Commissioner Erhart reported that a letter sent out to library support groups was received favorably by Literacy Partners and the Friends of the Library. Both groups expressed interest in presenting at a future Library Commission meeting.

Library Commissioner Hadrovic will attend the upcoming Library Foundation board meeting and will discuss the letter to support groups.

Parks and Recreation Commissioner Brosnan welcomed the newly appointed members of the Commission.

G. Adjournment

Library Commission Chair Cohen adjourned the meeting at 8:18 p.m.

Nick Szegda, Assistant Library Services Director

C1 - PRESENTATION

MENLO PARK COMMUNITY CAMPUS

SUSTAINABILITY OVERVIEW JUNE 22, 2022

CITY OF MENLO PARK

META PLATFORMS

HART HOWERTON

PAE ENGINEERS

DCI ENGINEERS

KPF ENGINEERS

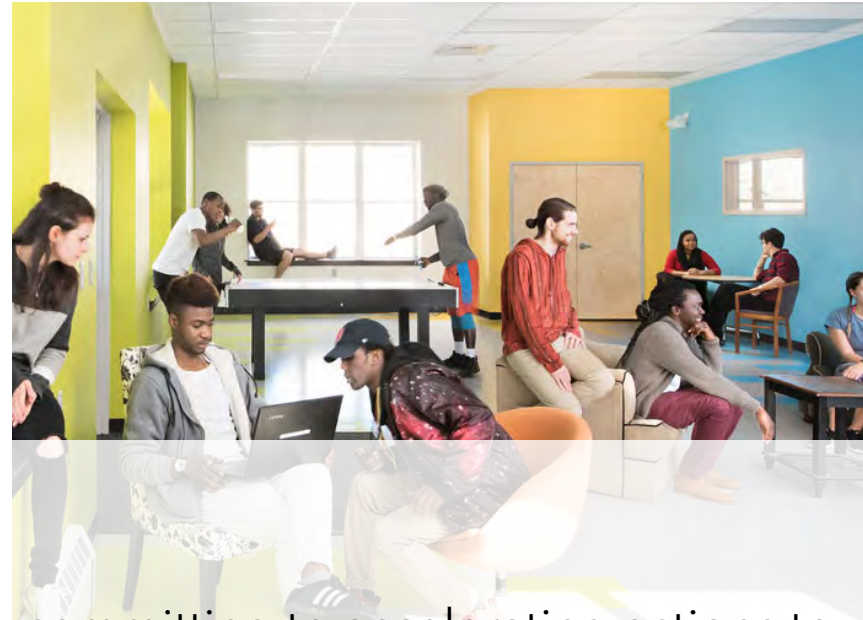
STOK

OPTONY / ENGIE SA





Menlo Park Community Campus | Final Planning Submittal Rendering - Arrival

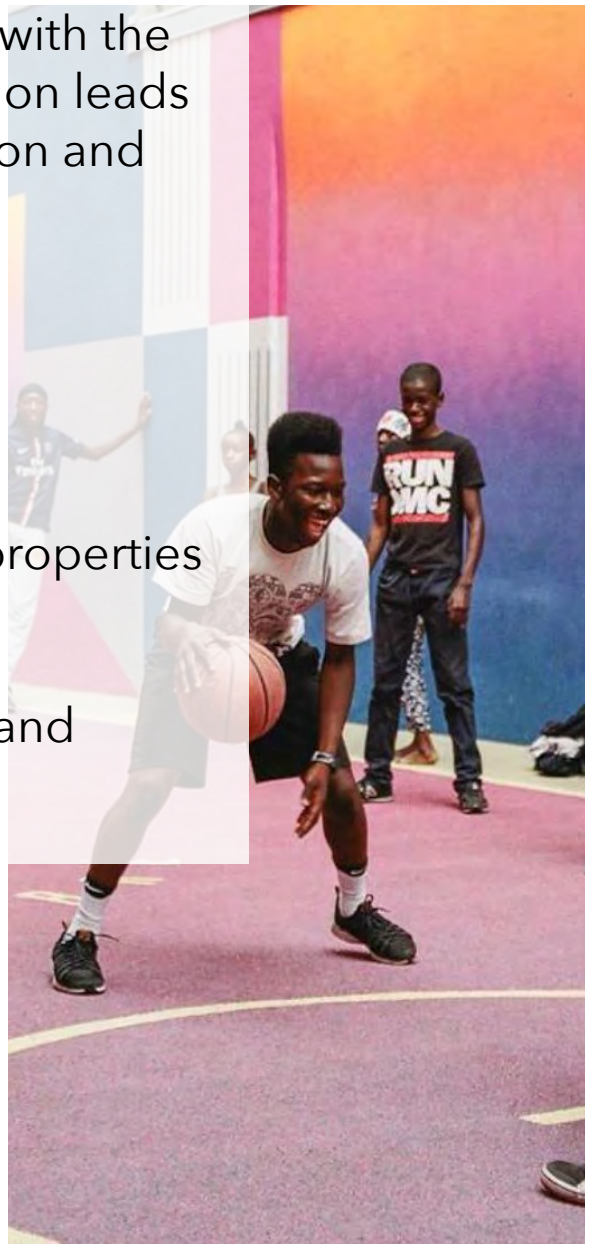
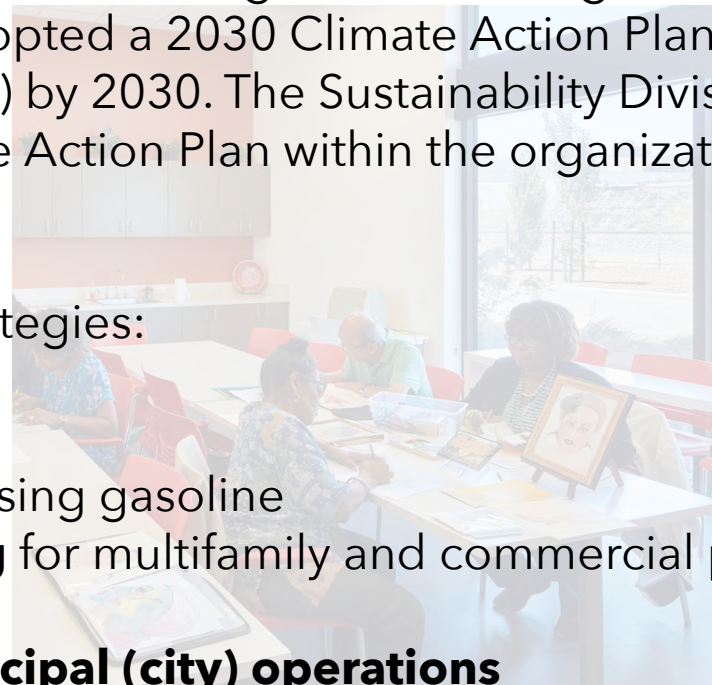
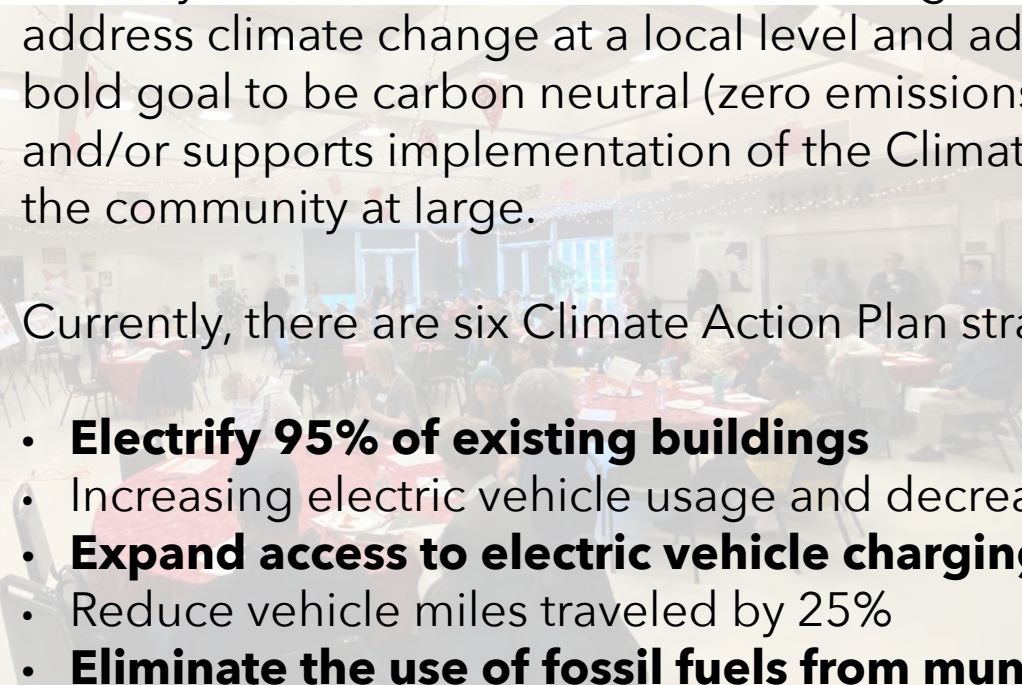


Sustainability

The City Council declared a climate emergency committing to accelerating actions to address climate change at a local level and adopted a 2030 Climate Action Plan with the bold goal to be carbon neutral (zero emissions) by 2030. The Sustainability Division leads and/or supports implementation of the Climate Action Plan within the organization and the community at large.

Currently, there are six Climate Action Plan strategies:

- **Electrify 95% of existing buildings**
- Increasing electric vehicle usage and decreasing gasoline
- **Expand access to electric vehicle charging** for multifamily and commercial properties
- Reduce vehicle miles traveled by 25%
- **Eliminate the use of fossil fuels from municipal (city) operations**
- Develop a climate adaption plan to protect the community from sea level rise and flooding



MENLO PARK COMMUNITY CAMPUS

Key Project Sustainability and Resilience Goals

All Electric, Zero Combustion, Net Zero Energy Project

USGBC LEED Platinum Certification

On Site Renewable Energy Generation

Naturally Daylit Spaces

Healthy and Sustainable Materials and Finishes



Kelly Park Track & Field

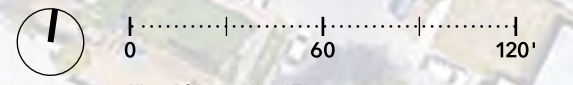
NEW 2-STORY
MENLO PARK
COMMUNITY
CAMPUS
BUILDING

Terminal Avenue

PG&E Substation

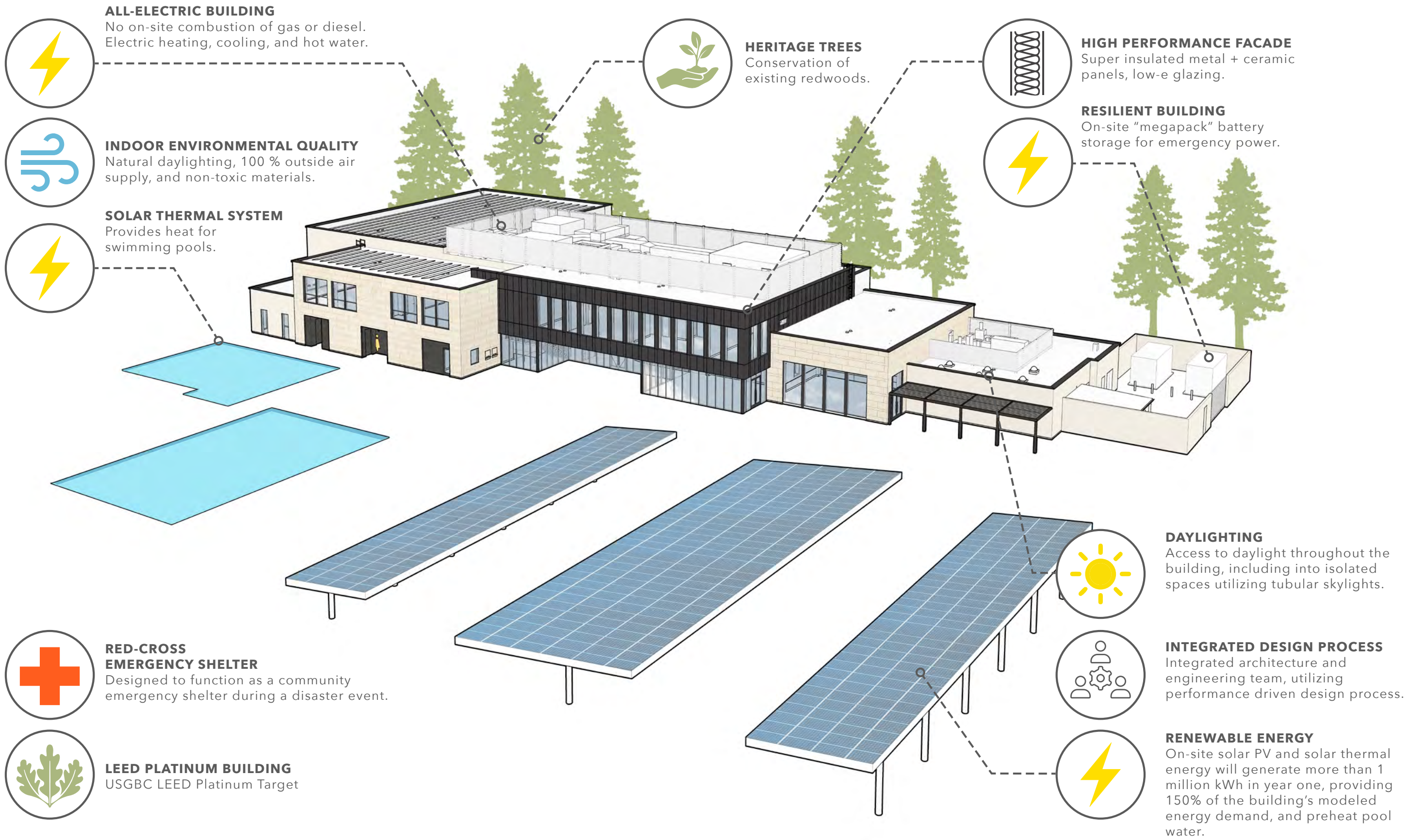
A	Menlo Park Community Campus Building	F	Bicycle Parking	K	Parking Lot
B	Boardwalk	G	Outdoor Dining Terrace	L	Pool Area
C	Playground	H	Community Terrace & Garden	M	Samtrans Bus Stop & Layover
D	Existing Redwood Trees to Remain	I	Service Area	N	Fire Access Lane
E	Children's Outdoor Courtyard	J	Pedestrian Pathway		

Proposed Site Plan



1" = 60' at 11" x 17"

October 8, 2021



A Sustainable and Resilient Community Campus

stok LEED NC v4 SCORECARD

Menlo Park Community Campus

IP	AWARDED				Phase	Credit Name	Points Available
	AWARDED	LIKELY	PURSUIING	NO			
1				D	Credit	Integrative Process - In design phases, achieve synergies between building, energy AND water related systems	1
1	Totals						1

LOCATION & TRANSPORTATION	AWARDED				Phase	Credit Name	Points Available
	AWARDED	LIKELY	PURSUIING	NO			
				D	Credit	LEED for Neighborhood Development Location - Locate within LEED ND certified development site boundary	16
1				D	Credit	Sensitive Land Protection - Develop on previously developed land or follow criteria for non - sensitive	1
				D	Credit	High Priority Site - Locate project on infill location in historic district, priority designation or brownfield	2
2				D	Credit	Surrounding Density & Diverse Uses - Site within 1/4 mile of surrounding density criteria and/or a 1/2 mile of diverse uses	5
				D	Credit	Access to Quality Transit - Locate functional entries within 1/4 mile of existing transit or 1/2 mile of planned transit services	5
1				D	Credit	Bicycle Facilities - Provide a bike network and storage areas	1
		1		D	Credit	Reduced Parking Footprint - Don't exceed minimum local code requirements for parking capacity	1
1				D	Credit	LEED v4.1: Electric Vehicles - 5 % of spaces or 20 % discount for parking and electric car charging OR liquid, gas or battery facilities	1
5	1	16	Totals				16

SUSTAINABLE SITES	AWARDED				Phase	Credit Name	Points Available
	AWARDED	LIKELY	PURSUIING	NO			
				C	Prereq	Construction Activity Pollution Prevention - Implement an erosion control plan, per the EPA CGP v2012	NA
1				D	Credit	Site Assessment - Complete site survey including: topography, hydrology, climate, vegetation, soils, human use, human health	1
		1	1	D	Credit	Site Development - Protect or Restore Habitat - On-site restoration OR financial support	2
1				D	Credit	Open Space - Provide outdoor space greater than or equal to 30% of total site area, 25% of which is vegetated	1
2			1	D	Credit	Rainwater Management - Manage runoff for at least the 85th percentile of local rainfall events	3
2				D	Credit	Heat Island Reduction - Meet nonroof and roof criteria OR place a minimum of 75% parking spaces under cover	2
1				D	Credit	Light Pollution Reduction - Backlight-uptight-glare method or calculation method, exterior luminaires and signage req's	1
7	1	2	Totals				10

WATER	AWARDED				Phase	Credit Name	Points Available
	AWARDED	LIKELY	PURSUIING	NO			
				D	Prereq 1	Outdoor Water Use Reduction - Permanent non-irrigated landscape OR reduce water use 30% for peak water month	N/A
				D	Prereq 2	Indoor Water Use Reduction - Reduce aggregate water use by 20% for fixtures and fittings	N/A
				D	Prereq 3	Building-Level Water Metering - Install permanent water meters that measure potable water use, share data with USGBC	N/A
1			1	D	Credit	Outdoor Water Use Reduction - Reduce water use no irrigation or reduced irrigation 50% - 100%	2
6				D	Credit	Indoor Water Use Reduction - Reduce fixture and fitting water use by 25% - 50%	6
			2	D	Credit	Cooling Tower Water Use - Conduct a one-time potable water analysis, measure control parameters in Table 1	2
1				D	Credit	Water Metering - Meters for 2 or more water subsystems: irrigation, indoor plumbing, hot water, boiler, reclaimed water, or other	1
8		3	Totals				11

ENERGY & ATMOSPHERE	AWARDED				Phase	Credit Name	Points Available
	AWARDED	LIKELY	PURSUIING	NO			
				C	Prereq 1	Fundamental Commissioning and Verification - Commissioning for ASHRAE 0-2005 and 1.1-2007	N/A
				D	Prereq 2	Minimum Energy Performance - Whole building energy simulation OR ASHRAE 50% Design Guide OR ABCPG	N/A
				D	Prereq 3	Building-Level Energy Metering - Use building-level energy meters or submeters that can aggregate building-level data	N/A
				D	Prereq 4	Fundamental Refrigerant Management - Do not use CFC-based refrigerants in HVAC&R systems, or have a phase out plan	N/A
6				C	Credit	Enhanced Commissioning - Implement systems commissioning or monitor-based commissioning	6
18				D	Credit	LEED v4.1: Optimize Energy Performance - Whole building energy simulation or follow ASHRAE Advanced Energy Design Guide	18
1				D	Credit	Advanced Energy Metering - Install advanced energy metering for whole building and individual energy sources	1
			2	C	Credit	Demand Response - Participate in existing demand response program or provide infrastructure for demand response programs	2
5				D	Credit	LEED v4.1: Renewable Energy - Use on-site or offsite renewable energy to offset green house gas emissions for annual energy use	5
			1	D	Credit	Enhanced Refrigerant Management - Refrigerants with ODP of 0 and GWP of less than 50 OR calculate refrigerant impact	1
30		3	Totals				33

MATERIALS & RESOURCES	AWARDED				Phase	Credit Name	Points Available
	AWARDED	LIKELY	PURSUIING	NO			
				D	Prereq	Storage and Collection of Recyclables - Dedicated areas for waste collection, collection and storage	N/A
				D	Prereq	Construction and Demolition Waste Management Planning - Establish C&D waste diversion goals	N/A
1	1		3	C	Credit	Building Life-Cycle Impact Reduction - Historic building reuse, renovate blighted buildings OR whole building LCA	5
2				C	Credit	LEED v4.1: Building Product Disclosure and Optimization - Environmental Product Declarations	2
1	1			C	Credit	LEED v4.1: Building Product Disclosure and Optimization - Material Ingredients	2
2				C	Credit	LEED v4.1: Building Product Disclosure and Optimization - Sourcing of Raw Materials	2
2				C	Credit	C&D Waste Management - Divert 50% (3 streams), 75% (4 streams) OR 2.5 lbs. waste per square foot	2
8	2	3	Totals				13

INDOOR ENVIRONMENTAL QUALITY	AWARDED				Phase	Credit Name	Points Available
	AWARDED	LIKELY	PURSUIING	NO			
				D	Prereq	Minimum Indoor Air Quality Performance - Meet ASHRAE 62.1-2010	N/A
				D	Prereq	Environmental Tobacco Smoke Control - Prohibit smoking indoors, restrict outdoor smoking within 25 feet	N/A
2				D	Credit	Enhanced Indoor Air Quality Strategies - Comply with enhanced IAQ strategies	2
3				C	Credit	LEED v4.1: Low-Emitting Materials - Achieve level of compliance for product categories or use budget calculation method	3
1				C	Credit	Construction IAQM Plan - Implement IAQMP & protect materials and equipment during construction	1
2				C	Credit	Indoor Air Quality Assessment - Before and during occupancy flush-out OR conduct baseline IAQ testing	2
1				D	Credit	Thermal Comfort - Meet requirements for ASHRAE 55-2010	1
1			1	D	Credit	Interior Lighting - Lighting Controls for 90% plus individual occupant spaces & four lighting quality strategies	2
1	1	1		D	Credit	Daylight - Install glare control devices, spatial daylight autonomy, illuminance calculations OR daylight floor area measurement	3
1				D	Credit	Quality Views - Vision glazing for 75% of regularly occupied floor area, with at least two kinds of view types	1
			1	D	Credit	LEED v4.1: Acoustic Performance - Meet requirements for HVAC noise, sound isolation, reverberation time, & sound masking	1
12	1	3	Totals				16

INNOVATION*	AWARDED				Phase	Credit Name	Points Available
	AWARDED	LIKELY	PURSUIING	NO			
1				D	Credit	O+M Starter Kit: Green Cleaning & IPM	1
1				D	Credit	Integrative Analysis of Building Materials (or BPDO EP / Other EP)	1
1				D	Credit	Circular Products (or BPDO EP / Other EP)	1
1				D	Credit	Green Education	1
1				D	Credit	v4.1 Purchasing Lamps - Low Mercury Lighting	1
1				C	Credit	LEED Accredited Professional	1
6			Totals				6

*Innovation in Design includes Exemplary Performance credits

REGIONAL**	AWARDED				Phase	Credit Name	Points Available
	AWARDED	LIKELY	PURSUIING	NO			
1				D	Credit	Optimize Energy Performance	1
1				D	Credit	BPDO - Sourcing of Raw Materials	1
			1	D	Credit	Rainwater Management	1
1				D	Credit	Indoor Water Use Reduction	1
			1	D	Credit	Access to Quality Transit	1
			1	D	Credit	Building Life Cycle Impact Reduction	1
3			3	Totals			4

**only 4 Regional Credits are Applicable

Confirmed Certification Level:

Awarded + Likely Certification Level:

Awarded + Likely + Pursuing Certification Level:

Not Certified

PLATINUM

Platinum

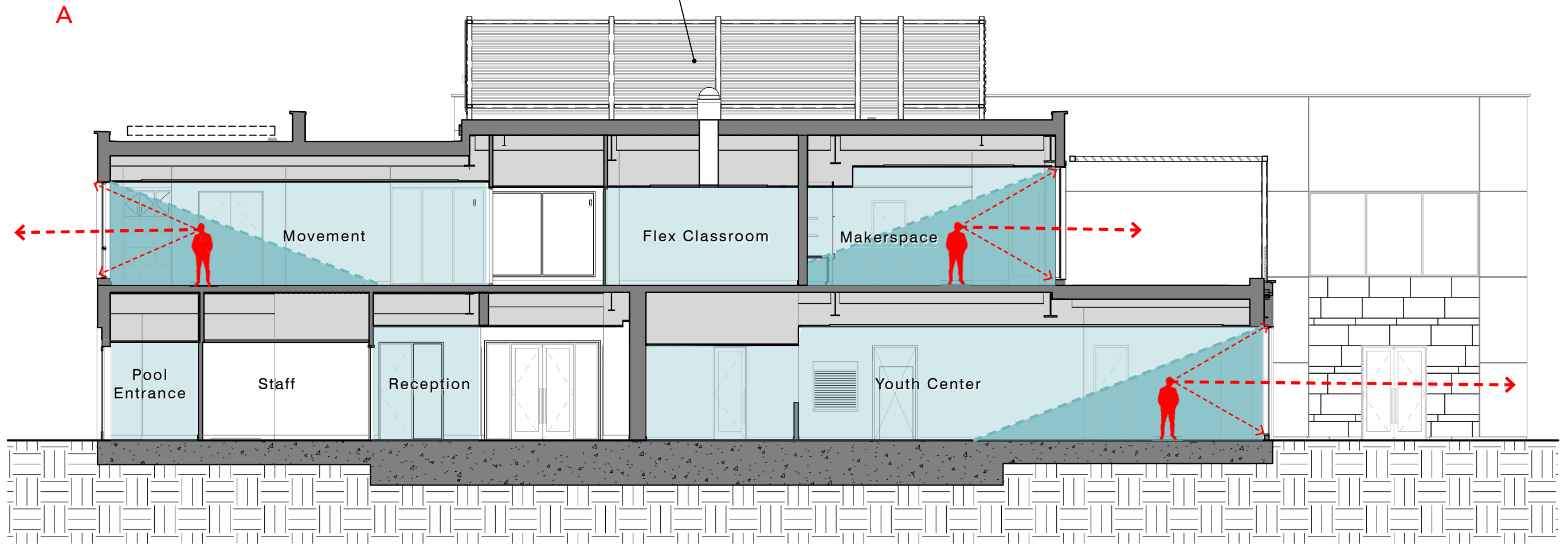
Awarded Points

GOLD / PLATINUM PURSUIT (Awarded + Likely Points)

PLATINUM PURSUIT (Awarded + Likely + Pursuing Points)

80

85



Design for Natural Daylight and Views

Menlo Park Reach Codes

“The 2019 California Building Standards Code and the California Code of Regulation will take in effect on January 1, 2020. The City of Menlo Park adopted groundbreaking local amendments to the State Building Code that would **require electricity as the only fuel source for new buildings** (not natural gas).”

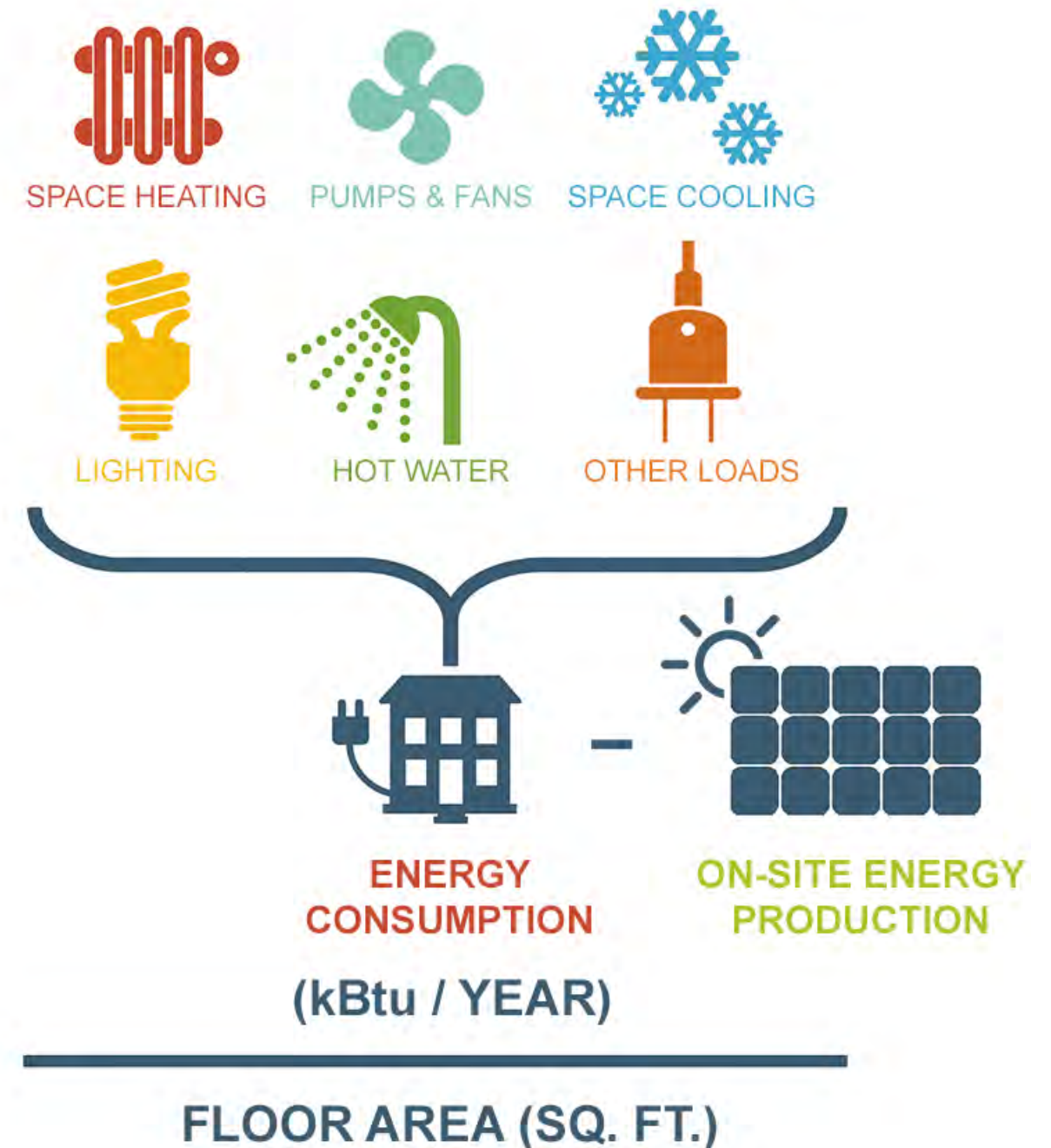
Energy Intensity Unit (EUI) Defined:

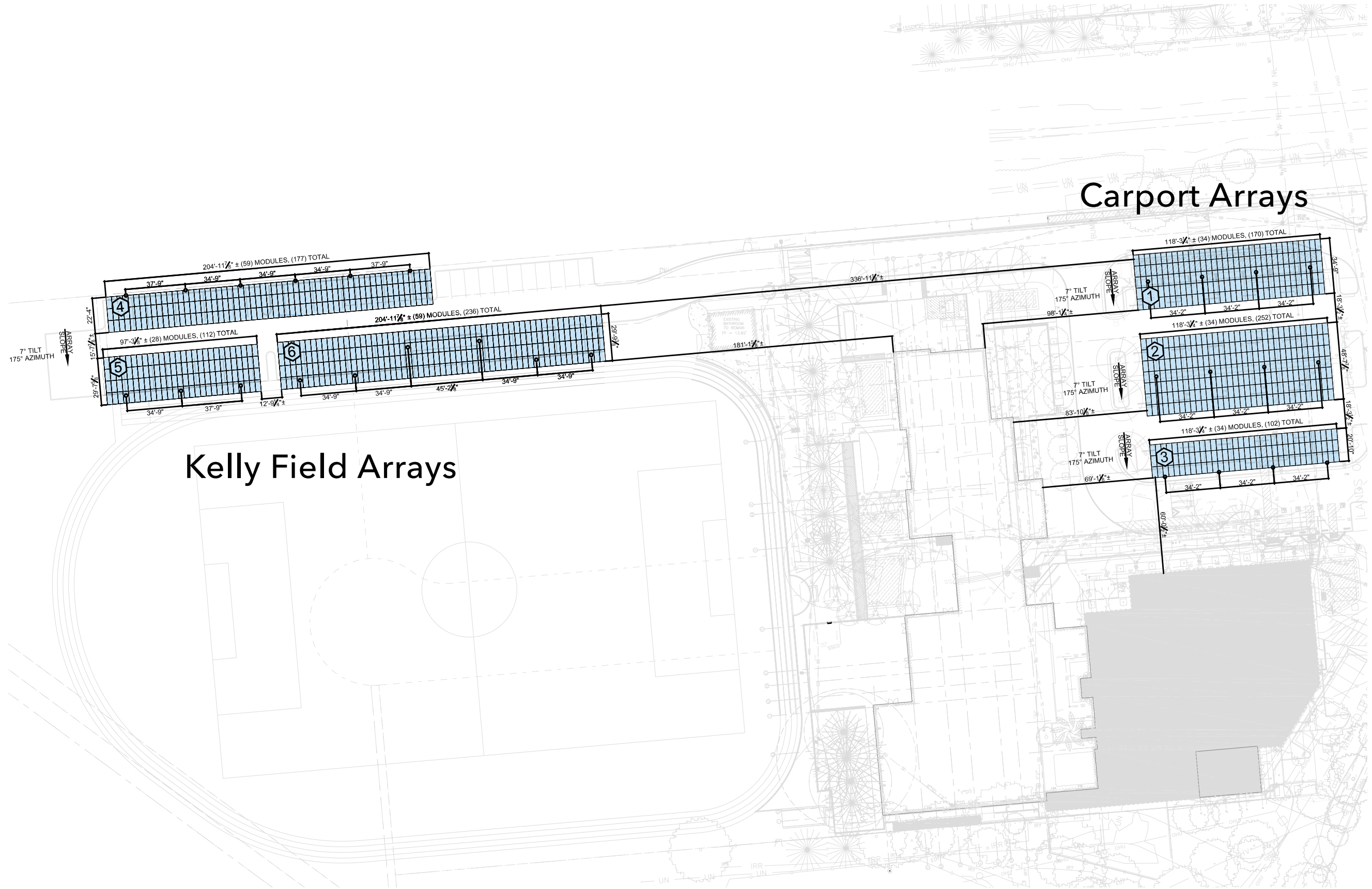
“Energy use intensity (EUI) is an indicator of the energy efficiency of a building’s design and/or operations. EUI can be thought of as the miles per gallon rating of the building industry.”

<https://aiacalifornia.org/energy-use-intensity-eui/>

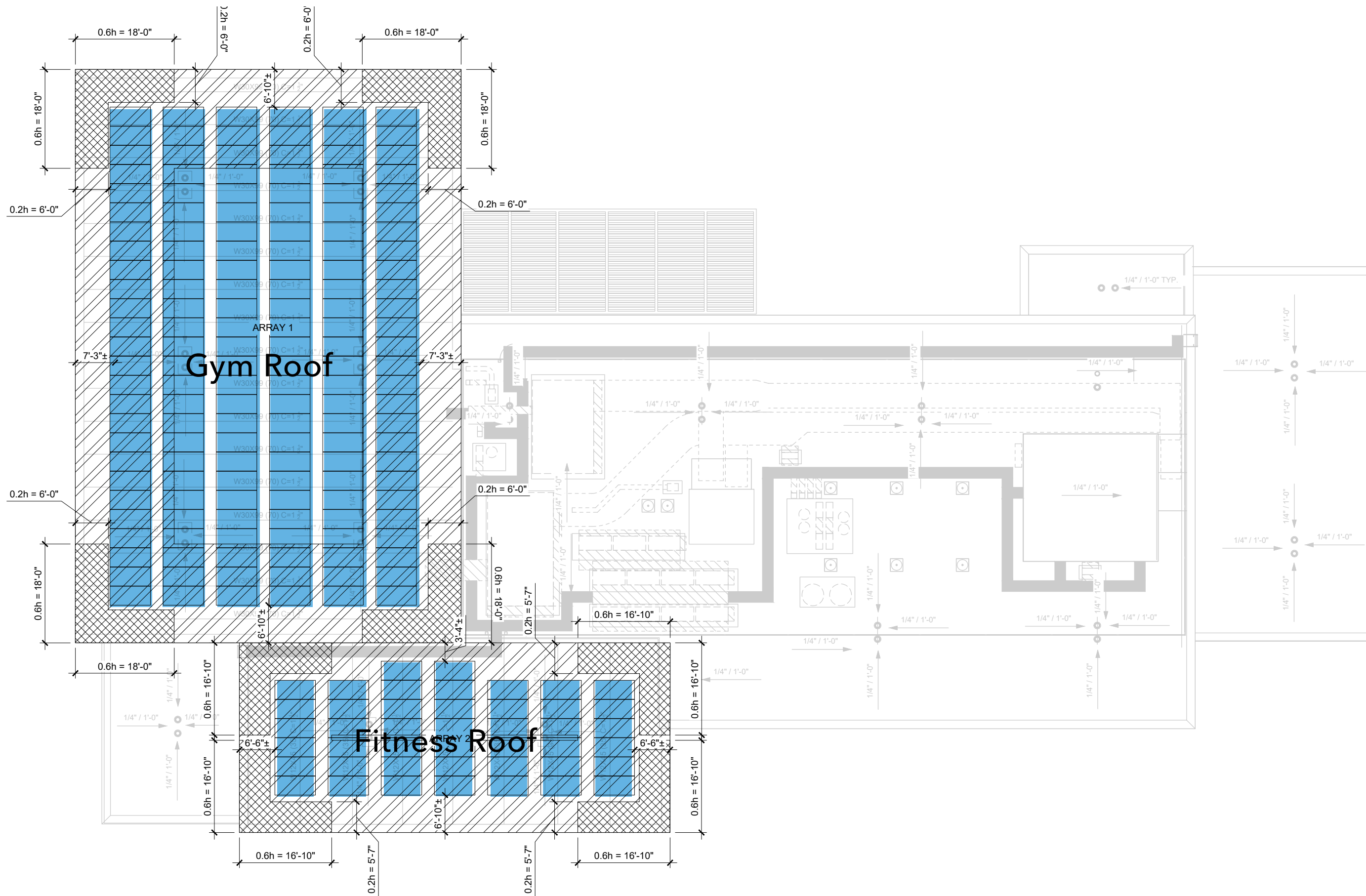
Site Energy Use Intensity (EUI)

MEASURED FOR 365 DAYS

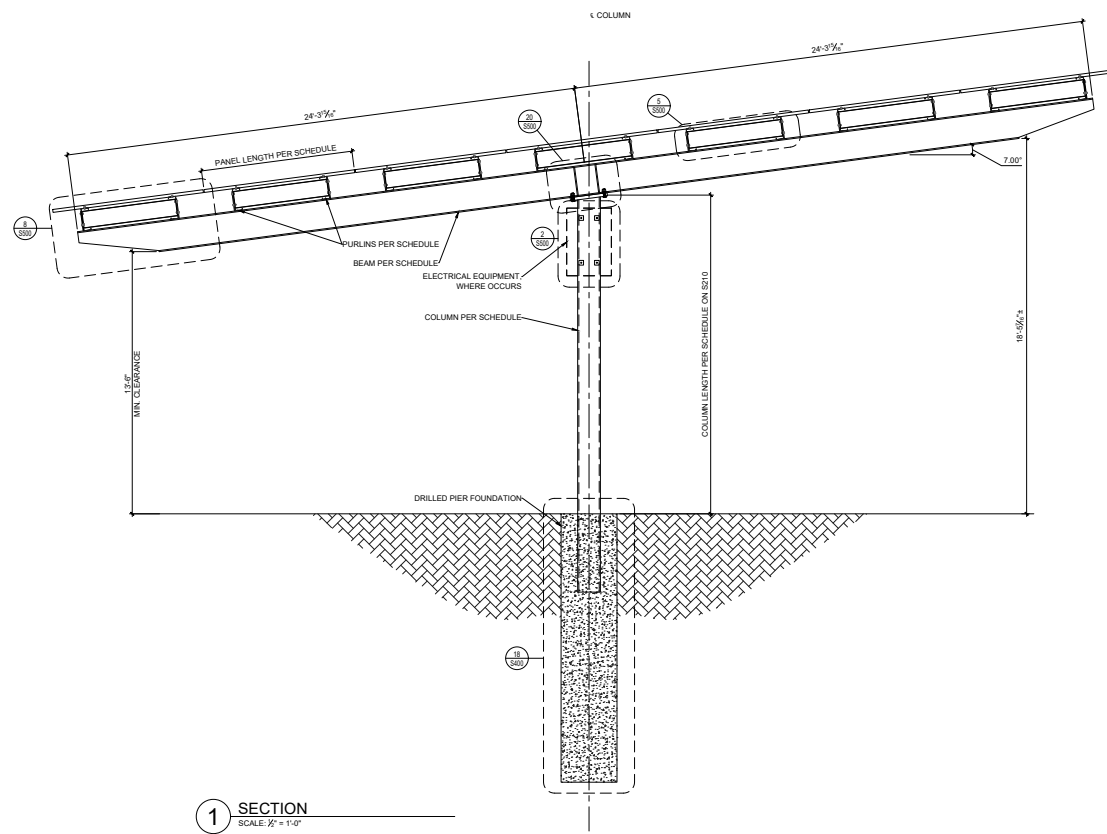




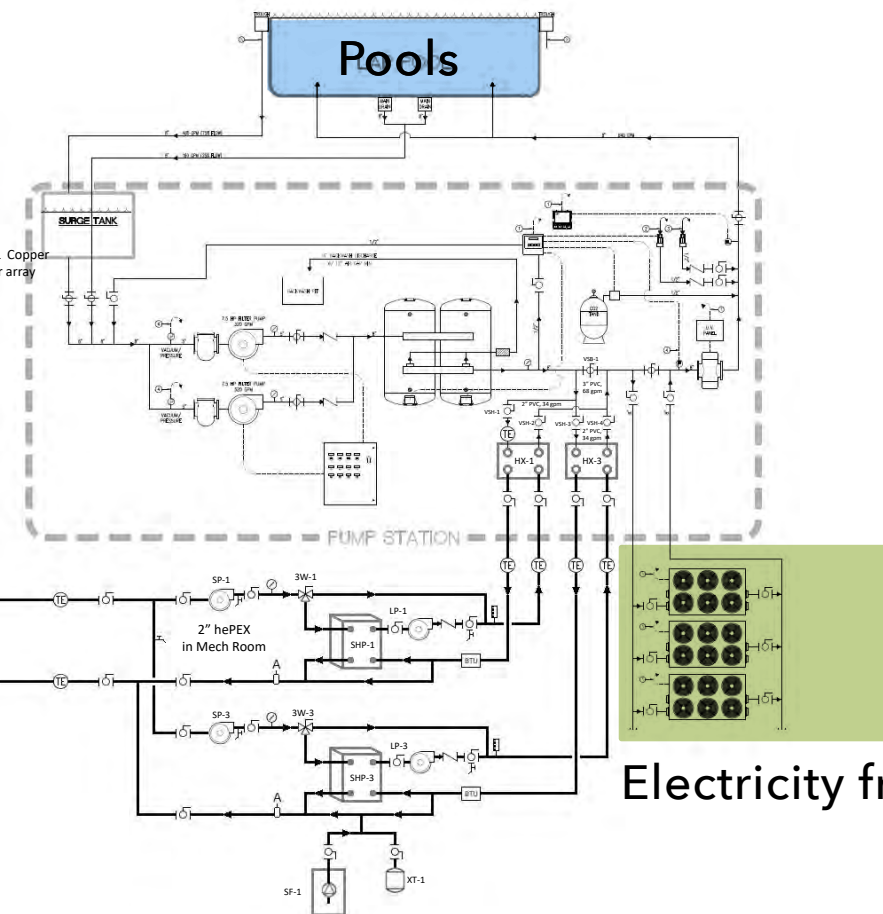
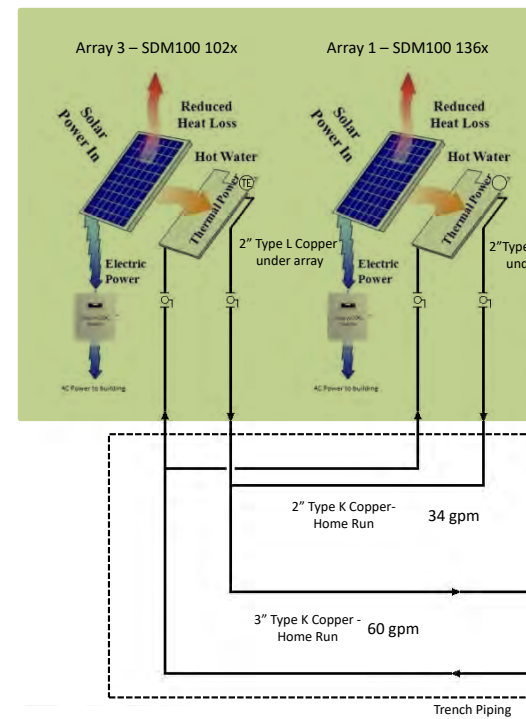
Solar Photovoltaic / Solar Thermal Arrays at Kelly Field + Carports



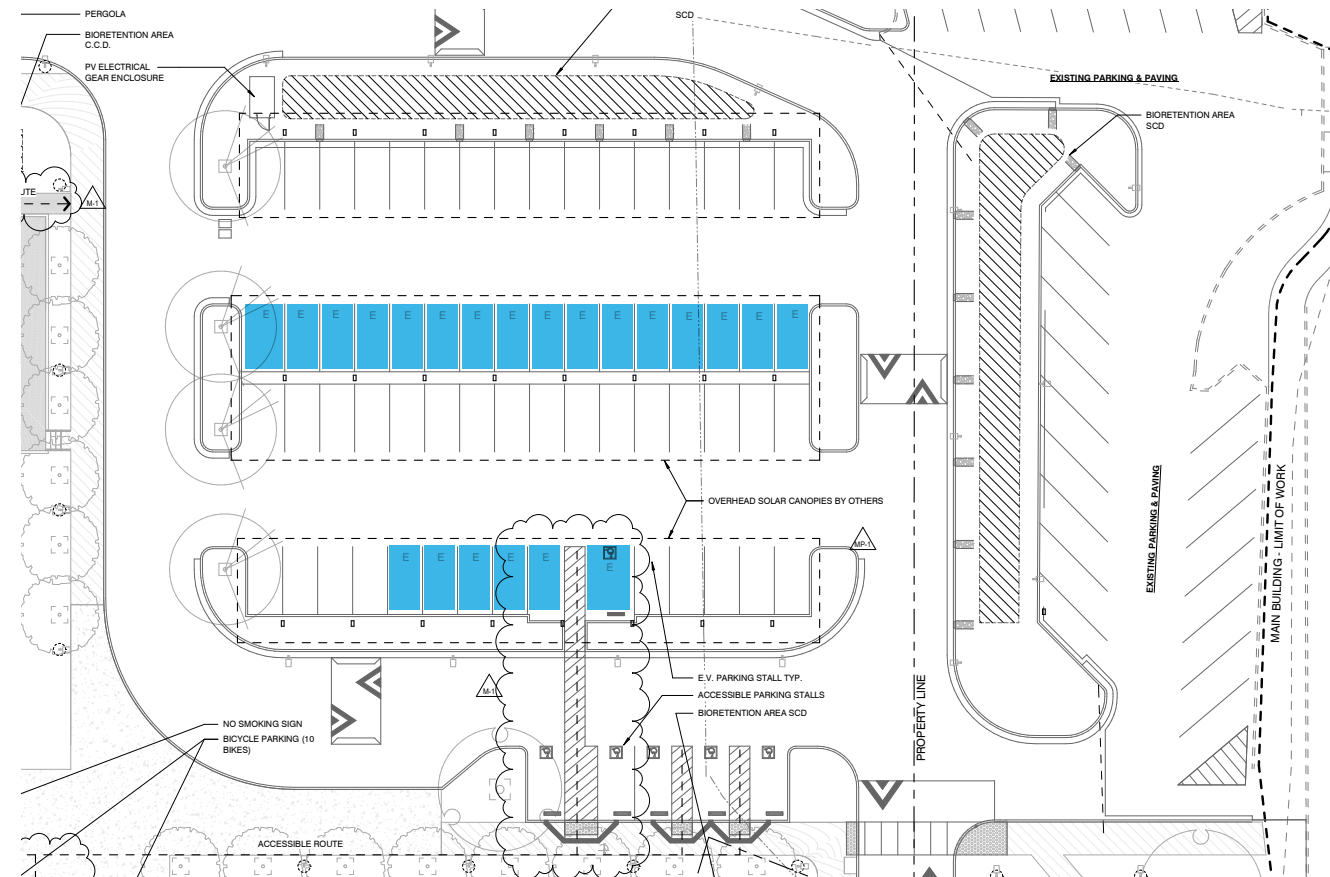
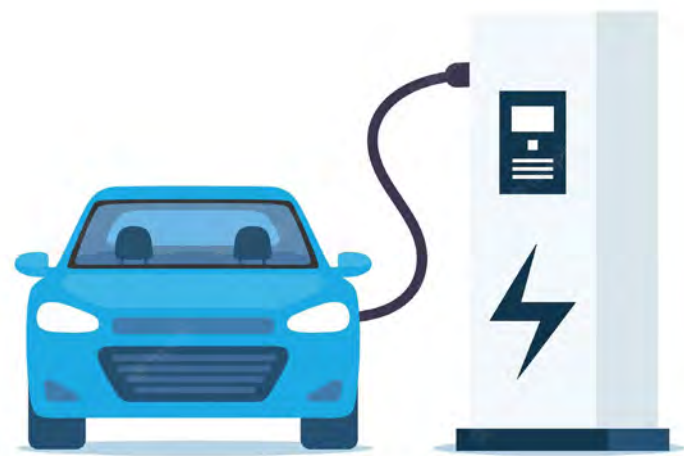
Solar Photovoltaic Arrays at Rooftops



Heat from Sun



Solar Photovoltaic + Solar Thermal Arrays



27 EV Charging Stations

THE MENLO PARK COMMUNITY CAMPUS MICROGRID

Microgrid Defined:

"a small network of electricity users with a local source of supply that is usually attached to a centralized national grid but is able to function independently."



THE MEGAPACK

Applications:

- Renewable Smoothing
- T&D Investment Deferral
- Voltage Support
- Capacity Support
- Microgrid
- Market Participation
- Frequency Regulation



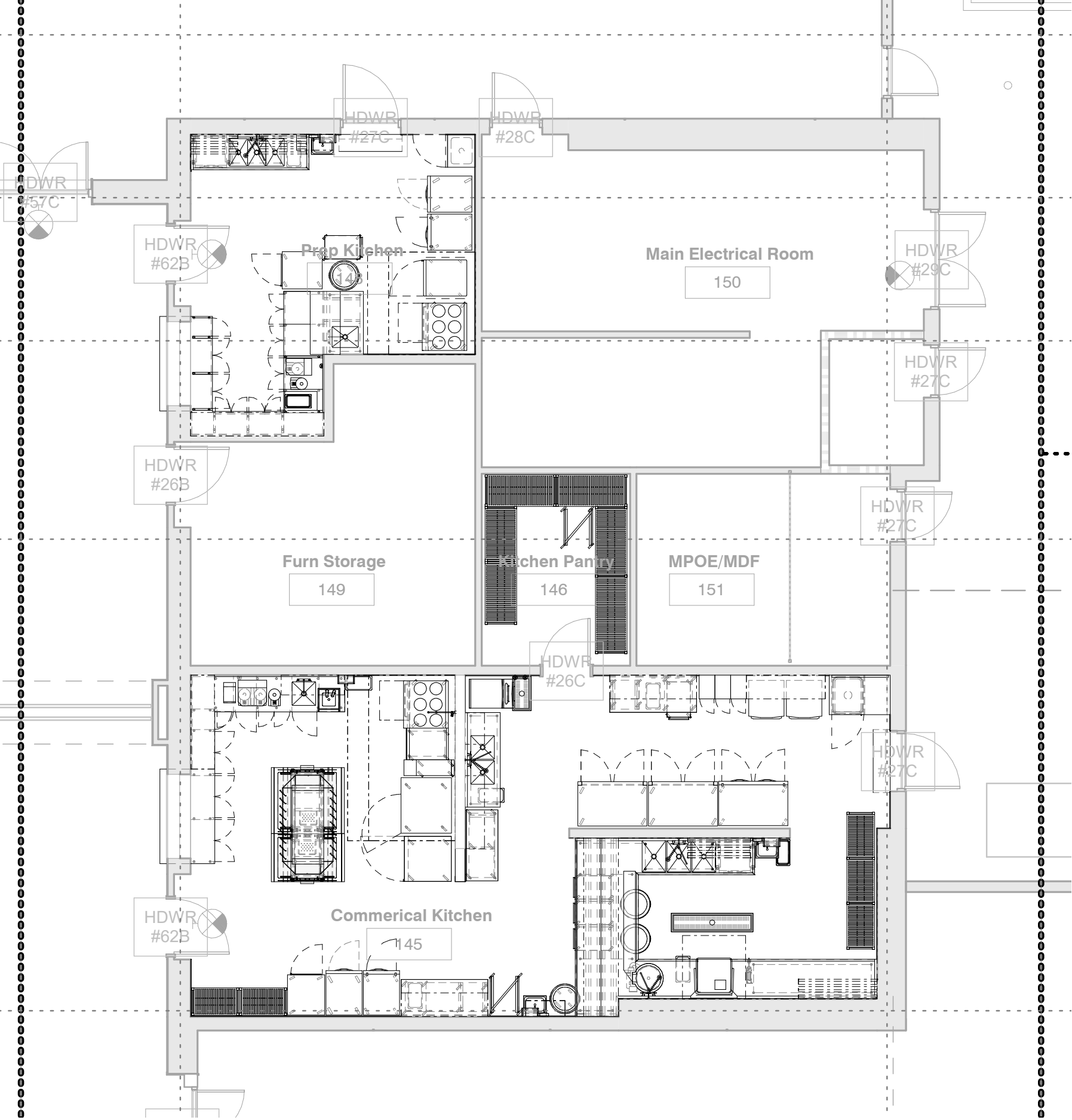
<https://www.tesla.com/megapack>

"... study by the Northeast Energy Efficiency Partnerships found that when units designed specifically for colder regions were installed in the Northeast and Mid-Atlantic regions, the annual savings are around 3,000 kWh (or \$459) when compared to electric resistance heaters, and 6,200 kWh (or \$948) when compared to oil systems."

<https://www.energy.gov/energysaver/air-source-heat-pumps>



Air Source Heat Pumps



All-Electric Commercial Kitchen



Menlo Park Community Campus | Final Planning Submittal Rendering - Children's Terrace

Questions



C2 - PRESENTATION



RECREATION AND COMMUNITY PROGRAMS SURVEY PRELIMINARY RESULTS

Joint meeting – Library Commission and Parks & Recreation Commission – June 22, 2022

Background

- City Council directed staff to conduct an analysis of the city's aquatics program needs including a survey of Menlo Park residents.
- The MPCC Subcommittee expressed interest in leveraging the survey to also gain insight into residents' needs and interests related to programming in the new center.
- Working with the MPCC Subcommittee, staff prepared a survey to gain insight in all these areas.
- The survey is now open to Menlo Park residents through multiple formats including electronic (publicinput.com/communityprograms), paper and in-person, in English and Spanish.

Home / **Resident input wanted for recreation and community programs**

Resident input wanted for recreation and community programs

Published on June 13, 2022

The City of Menlo Park wants to hear from you in an effort to better understand resident uses and needs for recreation programs and other community services. The survey will inform the discussion and consideration of programming needs at the new [Menlo Park Community Campus](#) facility and citywide, including aquatics and other programs and activities. The survey is available in both English and Spanish.

- [English survey](#)
- [Spanish survey](#)

The City Council is tentatively scheduled to review the results of the survey at its regular meeting on July 26.





Survey – Preliminary impressions

The survey is still open and active. This preliminary data will change as more responses come in.

- 258 responses as of June 22, 2022
- 40% of respondents report living in Menlo Park 20+ years
- Neighborhoods with the most responses:
 - 17% - Belle Haven
 - 15% - Central Menlo Park
 - 13% - Sharon Heights

Survey – Preliminary impressions

The survey is still open and active. This preliminary data will change as more responses come in.

- Most frequently visited locations (Once per week or more):
 - 61% - Parks and green spaces
 - 38% - Walking / hiking trails
 - 27% - Public libraries
 - 27% - Swimming pools
 - 26% - Tennis / pickleball courts
 - 22% - Athletic fields

Survey – Preliminary impressions

The survey is still open and active. This preliminary data will change as more responses come in.

- Community programs / classes – “how important” ratings
 - 93% - Programs / classes are focused on the needs of Menlo Park residents
 - 90% - Programs / classes are free / discounted fees for Menlo Park residents
 - 90% - Music / performing arts
 - 89% - Health and wellness / yoga / meditation
 - 88% - Fitness center – weights, resistance, cardio
 - 84% - Dance / movement
 - 81% - Strength / balance training for seniors

Survey – Preliminary impressions

The survey is still open and active. This preliminary data will change as more responses come in.


- Aquatics and swimming – “how important” ratings
 - 96% - Swimming pools are open year-round
 - 95% - Swimming pools are open seven days per week
 - 95% - Swimming pools are focused on the needs of Menlo Park residents
 - 90% - Swimming pools have free/ discounted fees for Menlo Park residents
 - 88% - Beginner’s / children’s swimming lessons have priority
 - 86% - Children / families have priority for play and social time
 - 83% - Adaptive swimming for people with disabilities have priority

Survey – Preliminary impressions

The survey is still open and active. This preliminary data will change as more responses come in.

- Athletic programs – “how important” ratings
 - 97% - Neighborhood / family access to athletic fields for casual / drop-in play
 - 97% - Programs are focused on the needs of Menlo Park residents
 - 92% - Programs are free / discounted fees for Menlo Park residents
 - 95% - Children access to athletic fields for casual / drop-in play
 - 86% - Basketball - casual / drop-in play
 - 86% - Tennis - casual / drop-in play
 - 83% (tie) - Basketball (organized youth league); Gymnastics (youth casual / fun)



 Translate

Menlo Park resident survey – Recreation and community programs

The City of Menlo Park is interested in hearing residents' needs and views about recreation programs and other community services. Please tell us your views by taking this survey.

1. What neighborhood of Menlo Park do you live in now?

Allied Arts / Stanford Park

Belle Haven

Survey – Preliminary impressions

The survey is still open and active. This preliminary data will change as more responses come in.

- Library resources – “how important” ratings
 - 98% - Books in paper format
 - 98% - Wireless internet access (Wi-Fi) in the library
 - 97% - Books that reflect local/neighborhood residents’ cultures, needs and interests
 - 95% - Books with a range of different viewpoints including views I don't agree with
 - 95% - Books that are the newest and most popular bestsellers
 - 95% - Quiet places to read and study

Survey – Preliminary impressions

The survey is still open and active. This preliminary data will change as more responses come in.

- Library resources – “how important” ratings (continued)
 - 94% - Storytimes for young children
 - 94% - Books in electronic / digital formats
 - 89% - Books that are classics that I read in school / as a child
 - 87% - Wireless internet “Hot spots” for checkout / take home
 - 85% - Books written in languages other than English

Survey – Preliminary impressions

The survey is still open and active. This preliminary data will change as more responses come in.

- Community resources and services – “how important” ratings
 - 91% - Homework help for children and teen after school
 - 91% - English as Second Language (ESL) resources
 - 90% - Teens have space to socialize, read and study after school and weekends
 - 88% - Job skills / job readiness / job seeker resources and training
 - 87% - Adult literacy tutoring
 - 86% - Food distribution, food insecurity advise and support
 - 86% - Health care navigation and support



Discussion and feedback

Key insights

- Focus on the needs of Menlo Park residents, especially neighborhood residents
- Explore free / discounted programs for Menlo Park residents
- Focus on casual / drop in / family access
- Multi-generational services – children, teens, seniors
- Adaptive / all abilities
- Books, study, tutoring, literacy
- Resources and services – jobs, health/wellness, food security

D1 - PRESENTATION



MENLO PARK COMMUNITY CAMPUS PROGRAMMING ELEMENTS

Joint meeting – Library Commission and Parks & Recreation Commission – June 22, 2022





Overview

1. Guiding principles
2. MPCC Subcommittee and working group report
3. Menlo Park resident survey – preliminary impressions
4. Discussion and feedback



Guiding principles

The City of Menlo Park provides services and infrastructure that contribute to quality-of-life for all Menlo Park residents. In so doing, the City strives to balance the resources and requirements of each area of the city in an equitable manner for all residents, in all neighborhoods of the City. The City of Menlo Park prioritizes social justice in decisions that affect residents' lives:

- The fair, just and equitable management of all institutions serving the public directly or by contract;
- The fair, just and equitable distribution of public services and implementation of public policy; and
- The commitment to promote fairness, justice, and equity in the formation of public policy.

Excerpted from Cost Recovery Policy, City Council Procedure #CC-10-001, March 23, 2021



MPCC Subcommittee

- Mayor Nash and City Councilmember Taylor
- City Council created the MPCC Subcommittee to work with City staff and the community on the MPCC project.
- MPCC Subcommittee created a working group of Menlo Park residents to support and advise the subcommittee's work.
- May 24, 2022 – MPCC Subcommittee report to City Council
 - Recent activities
 - Summary of recent working group meetings
 - Working group ideas and suggestions

MPCC Subcommittee - working group

Working group members represent interests such as Bayfront neighborhoods, stakeholder constituencies, diverse user ages and abilities, and city commissions:

- Rachel Bickerstaff
- Rose Bickerstaff
- Sheryl Bims
- Mayrin Bunyagidj
- Jacqui Cebrian
- David Erhart
- Susan Erhart
- Israel Harris
- Jennifer Johnson
- Pam Jones
- Tim R.
- Michele Tate
- Tracie V.
- Shontelle W.



Working group – general feedback

- New, different, and fresh approach
- Desire to have a local hiring and procurement preference prioritizing the Bayfront, Citywide, and any displaced residents and businesses
- Review the MPCC programming and operations budget
- Start with a review of current and prior community center activities in Menlo Park as well as surrounding communities
- Outreach should include: people lacking technology access or skills; Spanish speakers
- Recognition and awards to people in community who created the vision and dialogue

Working group – operational ideas

- Front desk providing city services, assistance, city information, Community Resources/Bulletin Board
- Medical Training for staff including CPR
- Attendant for athletic facilities to keep space clean and sanitary
- Roles and rules for public spaces – Library, Makerspace, etc.
 - Supervision of children, Safety standards, noise levels
 - Field Usage Policy
- Fee structure, scholarships
- Focus on Menlo Park residents and particularly local Bayfront community (as opposed to renting out to others for cost recovery.)

Working group – programming ideas

Library and makerspace

- Story time
- Tutoring time
- Librarian help hours (learning library skills and systems, etc.)
- Host adult/child or adult/teen book clubs
- Teen space - teens play instruments or listen to music together
- Makerspace - large tables for workstations, 3D printer
 - Pottery class including kiln
 - Sewing classes including sewing machines
 - Woodshop

Working group – programming ideas

Athletic facility

- Strength training for women
- Strength/balance training for seniors
- Gymnastics classes for kids with special needs
- Fitness Center – safe, state of the art equipment, roomy
- Teen fitness offering inclusive of teens with disabilities
- Movement Studio – intentionally designed
 - Functional exercise with cardio

Working group – programming ideas

Aquatics / pools

- Adaptive swimming for people with disabilities
- Senior pool exercise class
- Lots of free swim time in the more heated pool with ramp



Working group – programming ideas

Educational opportunities

- Coding, Engineering, Science (ongoing classes)
- Health and Nutrition Classes for ALL
- Basic Life Skills - Budgeting, how to manage money, job seeking (resumes, interview skills, dress for success), social awareness
- College programming
- Driving school
- Computer lab

Working group – programming ideas

Educational opportunities (continued)

- Environmental education and impact - storyboards/classes based on MPCC sustainability
- Bike repair station/classes (example: Live In Peace organization)
- Cooking classes
- Teaching garden
- Adaptive recreation classes including mixed media art, karate, fun fitness, cooking, dance.

Next steps

- A follow-up City Council discussion about the MPCC project, including the resident survey results, operational plan milestones update, and updates related to the MPCC project budget, is tentatively targeted for July 26.



Discussion and feedback

Key considerations

- Guiding principles
- Focus on needs of Menlo Park residents
- Working group - programming ideas
 - Library and makerspace
 - Athletic facility
 - Educational opportunities
 - Aquatics / pools
- Free / discounted programs for Menlo Park residents



Discussion and feedback

Commission feedback

-