

Parks and Recreation Commission Library Commission



SPECIAL JOINT MEETING MINUTES

Date: 6/22/2022
Time: 6:30 p.m.
Location: Zoom

A. Call To Order

Library Commission Chair Cohen called the meeting to order at 6:35 p.m.

B. Roll Call

Library Commission

Present: Cohen, Erhart, Hadrovic, Singh (arrived 7:02 p.m.), Velagapudi

Absent: Leep, Zasslow

Parks and Recreation Commission

Present: Brosnan, Bryman, Bunyagidj, Diepenbrock, Joshua, Theriault

Absent: Baskin,

Staff: Library and Community Services Director Sean Reinhart, Acting Recreation Supervisor Rondell Howard, Assistant Library Services Director Szegda

C. Presentations and Proclamations

C1. Menlo Park Community Campus project environmental sustainability features

Hart Howerton representatives Jeff Till, Jon Swain, and Paul Mattingly made the presentation (Attachment).

C2. Preliminary results of Menlo Park resident survey – recreation and community programs

Director Reinhart made the presentation (Attachment).

- Brian Kissel requested clarification on the survey deadline and an additional survey focused on pickleball users.

D. Study Session

D1. Menlo Park Community Campus operational planning

Director Reinhart made the presentation (Attachment).

E. Informational Items

E2. Library and Community Services department proposed fiscal year 2022-23 operating budget

Director Reinhart introduced the item.

F. Commissioner Reports

Library Commissioner Erhart reported that a letter sent out to library support groups was received favorably by Literacy Partners and the Friends of the Library. Both groups expressed interest in presenting at a future Library Commission meeting.

Library Commissioner Hadrovic will attend the upcoming Library Foundation board meeting and will discuss the letter to support groups.

Parks and Recreation Commissioner Brosnan welcomed the newly appointed members of the Commission.

G. Adjournment

Library Commission Chair Cohen adjourned the meeting at 8:18 p.m.

Nick Szegda, Assistant Library Services Director

Minutes approved at the July 18, 2022 Library Commission meeting

Minutes approved at the July 27, 2022 Parks and Recreation Commission meeting

C1 - PRESENTATION

MENLO PARK COMMUNITY CAMPUS

SUSTAINABILITY OVERVIEW JUNE 22, 2022

CITY OF MENLO PARK

META PLATFORMS

HART HOWERTON

PAE ENGINEERS

DCI ENGINEERS

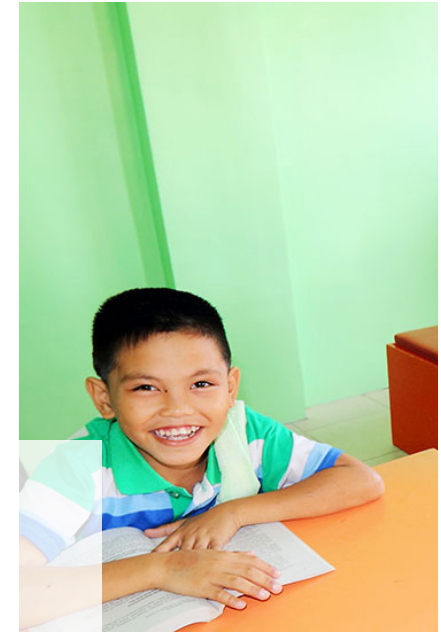
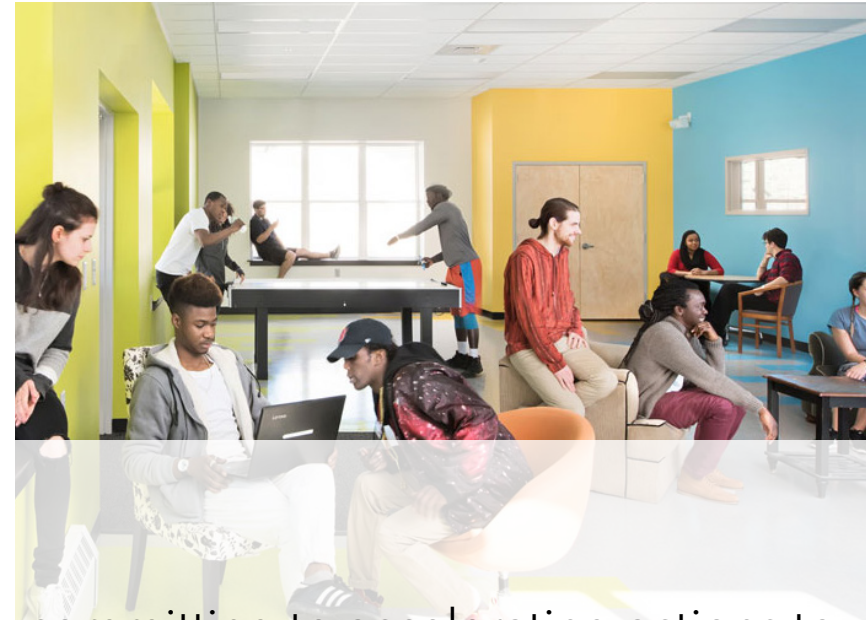
KPFF ENGINEERS

STOK

OPTONY / ENGIE SA



Menlo Park Community Campus | Final Planning Submittal Rendering - Arrival

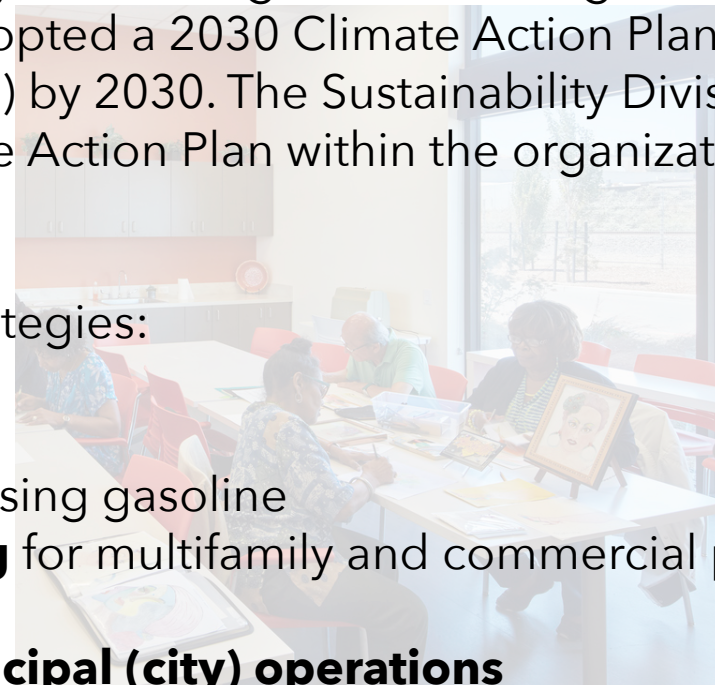
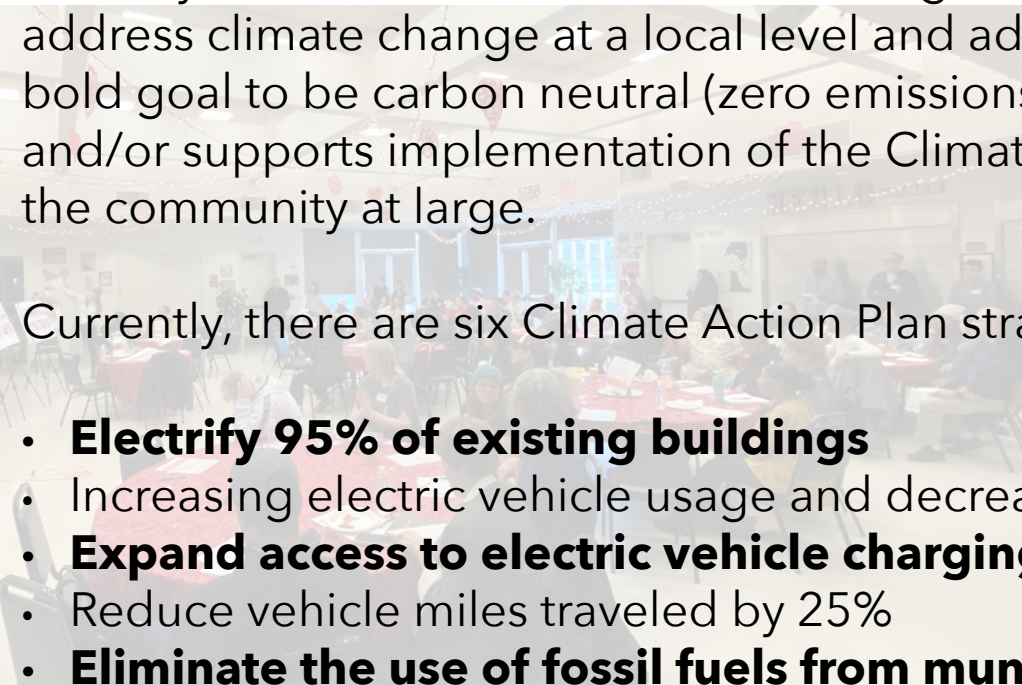


Sustainability

The City Council declared a climate emergency committing to accelerating actions to address climate change at a local level and adopted a 2030 Climate Action Plan with the bold goal to be carbon neutral (zero emissions) by 2030. The Sustainability Division leads and/or supports implementation of the Climate Action Plan within the organization and the community at large.

Currently, there are six Climate Action Plan strategies:

- **Electrify 95% of existing buildings**
- Increasing electric vehicle usage and decreasing gasoline
- **Expand access to electric vehicle charging** for multifamily and commercial properties
- Reduce vehicle miles traveled by 25%
- **Eliminate the use of fossil fuels from municipal (city) operations**
- Develop a climate adaption plan to protect the community from sea level rise and flooding



MENLO PARK COMMUNITY CAMPUS

Key Project Sustainability and Resilience Goals

All Electric, Zero Combustion, Net Zero Energy Project

USGBC LEED Platinum Certification

On Site Renewable Energy Generation

Naturally Daylit Spaces

Healthy and Sustainable Materials and Finishes



Kelly Park Track & Field

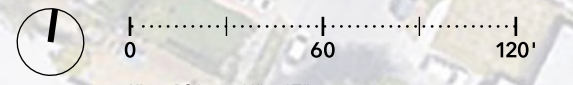
NEW 2-STORY
MENLO PARK
COMMUNITY
CAMPUS
BUILDING

Terminal Avenue

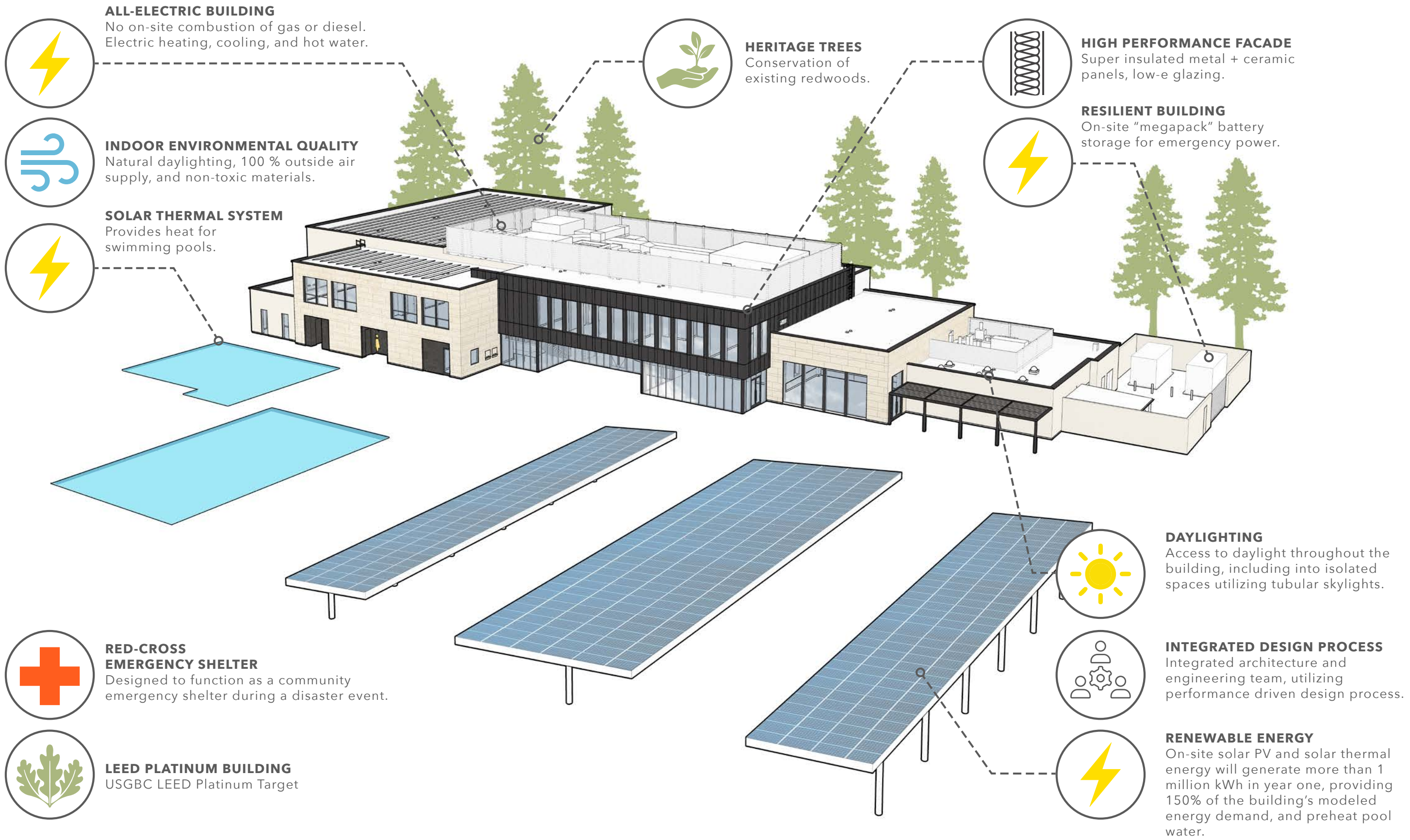
PG&E Substation

A	Menlo Park Community Campus Building	F	Bicycle Parking	K	Parking Lot
B	Boardwalk	G	Outdoor Dining Terrace	L	Pool Area
C	Playground	H	Community Terrace & Garden	M	Samtrans Bus Stop & Layover
D	Existing Redwood Trees to Remain	I	Service Area	N	Fire Access Lane
E	Children's Outdoor Courtyard	J	Pedestrian Pathway		

Proposed Site Plan



October 8, 2021



ALL-ELECTRIC BUILDING
No on-site combustion of gas or diesel.
Electric heating, cooling, and hot water.

INDOOR ENVIRONMENTAL QUALITY
Natural daylighting, 100 % outside air supply, and non-toxic materials.

SOLAR THERMAL SYSTEM
Provides heat for swimming pools.

HERITAGE TREES
Conservation of existing redwoods.

HIGH PERFORMANCE FACADE
Super insulated metal + ceramic panels, low-e glazing.

RESILIENT BUILDING
On-site "megapack" battery storage for emergency power.

DAYLIGHTING
Access to daylight throughout the building, including into isolated spaces utilizing tubular skylights.

INTEGRATED DESIGN PROCESS
Integrated architecture and engineering team, utilizing performance driven design process.

RENEWABLE ENERGY
On-site solar PV and solar thermal energy will generate more than 1 million kWh in year one, providing 150% of the building's modeled energy demand, and preheat pool water.

RED-CROSS EMERGENCY SHELTER
Designed to function as a community emergency shelter during a disaster event.

LEED PLATINUM BUILDING
USGBC LEED Platinum Target

A Sustainable and Resilient Community Campus

stok LEED NC v4 SCORECARD

Menlo Park Community Campus

IP	AWARDED				Phase	Credit Name	Points Available
	AWARDED	LIKELY	PURSUIING	NO			
1				D	Credit	Integrative Process - In design phases, achieve synergies between building, energy AND water related systems	1
1	Totals						1

LOCATION & TRANSPORTATION	AWARDED				Phase	Credit Name	Points Available
	AWARDED	LIKELY	PURSUIING	NO			
				D	Credit	LEED for Neighborhood Development Location - Locate within LEED ND certified development site boundary	16
1				D	Credit	Sensitive Land Protection - Develop on previously developed land or follow criteria for non - sensitive	1
				D	Credit	High Priority Site - Locate project on infill location in historic district, priority designation or brownfield	2
2				D	Credit	Surrounding Density & Diverse Uses - Site within 1/4 mile of surrounding density criteria and/or a 1/2 mile of diverse uses	5
				D	Credit	Access to Quality Transit - Locate functional entries within 1/4 mile of existing transit or 1/2 mile of planned transit services	5
1				D	Credit	Bicycle Facilities - Provide a bike network and storage areas	1
				D	Credit	Reduced Parking Footprint - Don't exceed minimum local code requirements for parking capacity	1
1				D	Credit	LEED v4.1: Electric Vehicles - 5 % of spaces or 20 % discount for parking and electric car charging OR liquid, gas or battery facilities	1
5	1	16	Totals				16

SUSTAINABLE SITES	AWARDED				Phase	Credit Name	Points Available
	AWARDED	LIKELY	PURSUIING	NO			
				C	Prereq	Construction Activity Pollution Prevention - Implement an erosion control plan, per the EPA CGP v2012	NA
1				D	Credit	Site Assessment - Complete site survey including: topography, hydrology, climate, vegetation, soils, human use, human health	1
				D	Credit	Site Development - Protect or Restore Habitat - On-site restoration OR financial support	2
1				D	Credit	Open Space - Provide outdoor space greater than or equal to 30% of total site area, 25% of which is vegetated	1
2				D	Credit	Rainwater Management - Manage runoff for at least the 85th percentile of local rainfall events	3
2				D	Credit	Heat Island Reduction - Meet nonroof and roof criteria OR place a minimum of 75% parking spaces under cover	2
1				D	Credit	Light Pollution Reduction - Backlight-uptight-glare method or calculation method, exterior luminaires and signage req's	1
7	1	2	Totals				10

WATER	AWARDED				Phase	Credit Name	Points Available
	AWARDED	LIKELY	PURSUIING	NO			
				D	Prereq 1	Outdoor Water Use Reduction - Permanent non-irrigated landscape OR reduce water use 30% for peak water month	N/A
				D	Prereq 2	Indoor Water Use Reduction - Reduce aggregate water use by 20% for fixtures and fittings	N/A
				D	Prereq 3	Building-Level Water Metering - Install permanent water meters that measure potable water use, share data with USGBC	N/A
1				D	Credit	Outdoor Water Use Reduction - Reduce water use no irrigation or reduced irrigation 50% - 100%	2
6				D	Credit	Indoor Water Use Reduction - Reduce fixture and fitting water use by 25% - 50%	6
				D	Credit	Cooling Tower Water Use - Conduct a one-time potable water analysis, measure control parameters in Table 1	2
1				D	Credit	Water Metering - Meters for 2 or more water subsystems: irrigation, indoor plumbing, hot water, boiler, reclaimed water, or other	1
8	3	Totals					11

ENERGY & ATMOSPHERE	AWARDED				Phase	Credit Name	Points Available
	AWARDED	LIKELY	PURSUIING	NO			
				C	Prereq 1	Fundamental Commissioning and Verification - Commissioning for ASHRAE 0-2005 and 1.1-2007	N/A
				D	Prereq 2	Minimum Energy Performance - Whole building energy simulation OR ASHRAE 50% Design Guide OR ABCPG	N/A
				D	Prereq 3	Building-Level Energy Metering - Use building-level energy meters or submeters that can aggregate building-level data	N/A
				D	Prereq 4	Fundamental Refrigerant Management - Do not use CFC-based refrigerants in HVAC&R systems, or have a phase out plan	N/A
6				C	Credit	Enhanced Commissioning - Implement systems commissioning or monitor-based commissioning	6
18				D	Credit	LEED v4.1: Optimize Energy Performance - Whole building energy simulation or follow ASHRAE Advanced Energy Design Guide	18
1				D	Credit	Advanced Energy Metering - Install advanced energy metering for whole building and individual energy sources	1
				C	Credit	Demand Response - Participate in existing demand response program or provide infrastructure for demand response programs	2
5				D	Credit	LEED v4.1: Renewable Energy - Use on-site or offsite renewable energy to offset green house gas emissions for annual energy use	5
				D	Credit	Enhanced Refrigerant Management - Refrigerants with ODP of 0 and GWP of less than 50 OR calculate refrigerant impact	1
30	3	Totals					33

MATERIALS & RESOURCES	AWARDED				Phase	Credit Name	Points Available
	AWARDED	LIKELY	PURSUIING	NO			
				D	Prereq	Storage and Collection of Recyclables - Dedicated areas for waste collection, collection and storage	N/A
				D	Prereq	Construction and Demolition Waste Management Planning - Establish C&D waste diversion goals	N/A
1	1			C	Credit	Building Life-Cycle Impact Reduction - Historic building reuse, renovate blighted buildings OR whole building LCA	5
2				C	Credit	LEED v4.1: Building Product Disclosure and Optimization - Environmental Product Declarations	2
1	1			C	Credit	LEED v4.1: Building Product Disclosure and Optimization - Material Ingredients	2
2				C	Credit	LEED v4.1: Building Product Disclosure and Optimization - Sourcing of Raw Materials	2
2				C	Credit	C&D Waste Management - Divert 50% (3 streams), 75% (4 streams) OR 2.5 lbs. waste per square foot	2
8	2	3	Totals				13

INDOOR ENVIRONMENTAL QUALITY	AWARDED				Phase	Credit Name	Points Available
	AWARDED	LIKELY	PURSUIING	NO			
				D	Prereq	Minimum Indoor Air Quality Performance - Meet ASHRAE 62.1-2010	N/A
				D	Prereq	Environmental Tobacco Smoke Control - Prohibit smoking indoors, restrict outdoor smoking within 25 feet	N/A
2				D	Credit	Enhanced Indoor Air Quality Strategies - Comply with enhanced IAQ strategies	2
3				C	Credit	LEED v4.1: Low-Emitting Materials - Achieve level of compliance for product categories or use budget calculation method	3
1				C	Credit	Construction IAQM Plan - Implement IAQMP & protect materials and equipment during construction	1
2				C	Credit	Indoor Air Quality Assessment - Before and during occupancy flush-out OR conduct baseline IAQ testing	2
1				D	Credit	Thermal Comfort - Meet requirements for ASHRAE 55-2010	1
1				D	Credit	Interior Lighting - Lighting Controls for 90% plus individual occupant spaces & four lighting quality strategies	2
1	1			D	Credit	Daylight - Install glare control devices, spatial daylight autonomy, illuminance calculations OR daylight floor area measurement	3
1				D	Credit	Quality Views - Vision glazing for 75% of regularly occupied floor area, with at least two kinds of view types	1
1				D	Credit	LEED v4.1: Acoustic Performance - Meet requirements for HVAC noise, sound isolation, reverberation time, & sound masking	1
12	1	3	Totals				16

INNOVATION*	AWARDED				Phase	Credit Name	Points Available
	AWARDED	LIKELY	PURSUIING	NO			
1				D	Credit	O+M Starter Kit: Green Cleaning & IPM	1
1				D	Credit	Integrative Analysis of Building Materials (or BPDO EP / Other EP)	1
1				D	Credit	Circular Products (or BPDO EP / Other EP)	1
1				D	Credit	Green Education	1
1				D	Credit	v4.1 Purchasing Lamps - Low Mercury Lighting	1
1				C	Credit	LEED Accredited Professional	1
6	Totals						6

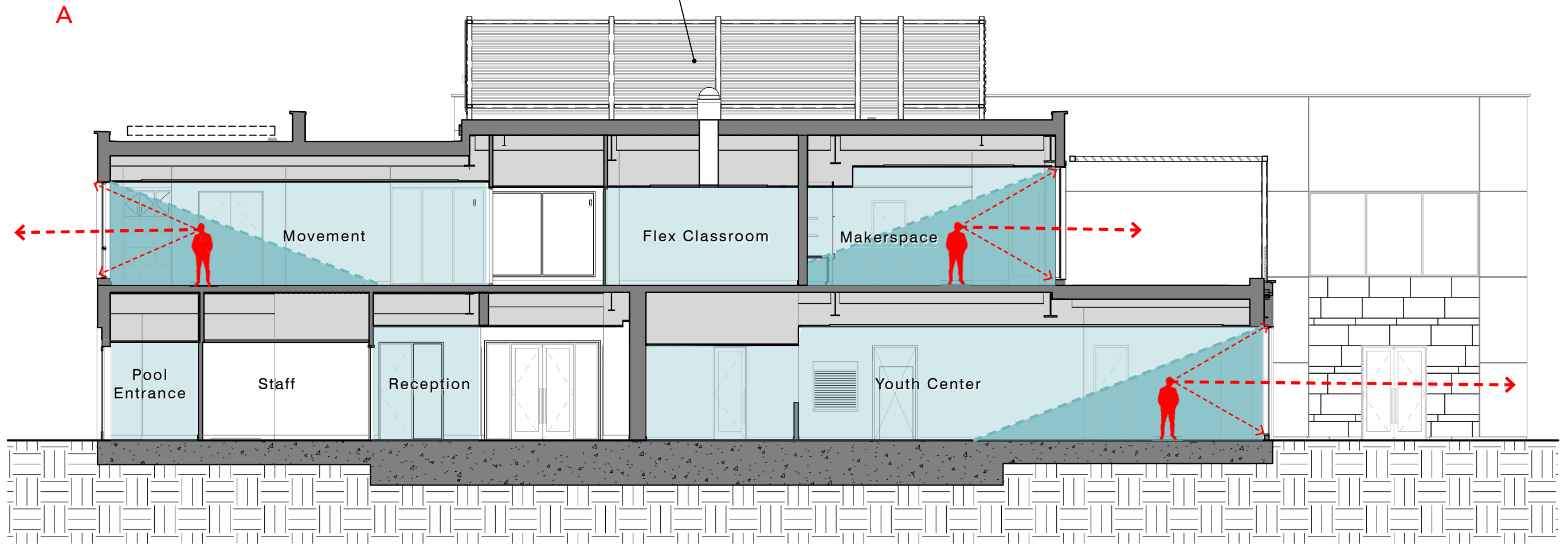
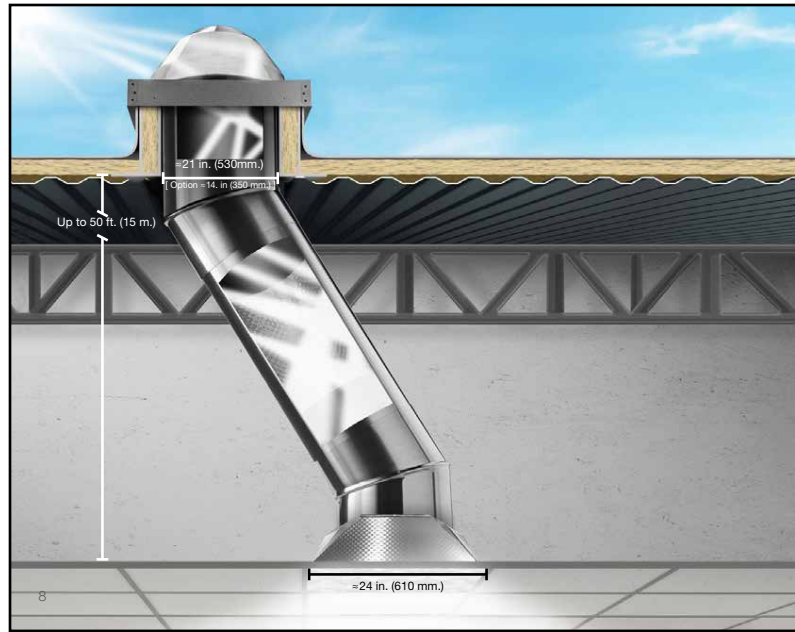
*Innovation in Design includes Exemplary Performance credits

REGIONAL**	AWARDED				Phase	Credit Name	Points Available
	AWARDED	LIKELY	PURSUIING	NO			
1				D	Credit	Optimize Energy Performance	1
1				D	Credit	BPDO - Sourcing of Raw Materials	1
				D	Credit	Rainwater Management	1
1				D	Credit	Indoor Water Use Reduction	1
				D	Credit	Access to Quality Transit	1
				D	Credit	Building Life Cycle Impact Reduction	1
3	3	Totals					4

**only 4 Regional Credits are Applicable

Confirmed Certification Level: Not Certified
 Awarded + Likely Certification Level: PLATINUM
 Awarded + Likely + Pursuing Certification Level: Platinum

Awarded Points
 GOLD / PLATINUM PURSUIT (Awarded + Likely Points) 80
 PLATINUM PURSUIT (Awarded + Likely + Pursuing Points) 85



Design for Natural Daylight and Views

Menlo Park Reach Codes

“The 2019 California Building Standards Code and the California Code of Regulation will take in effect on January 1, 2020. The City of Menlo Park adopted groundbreaking local amendments to the State Building Code that would **require electricity as the only fuel source for new buildings** (not natural gas).”

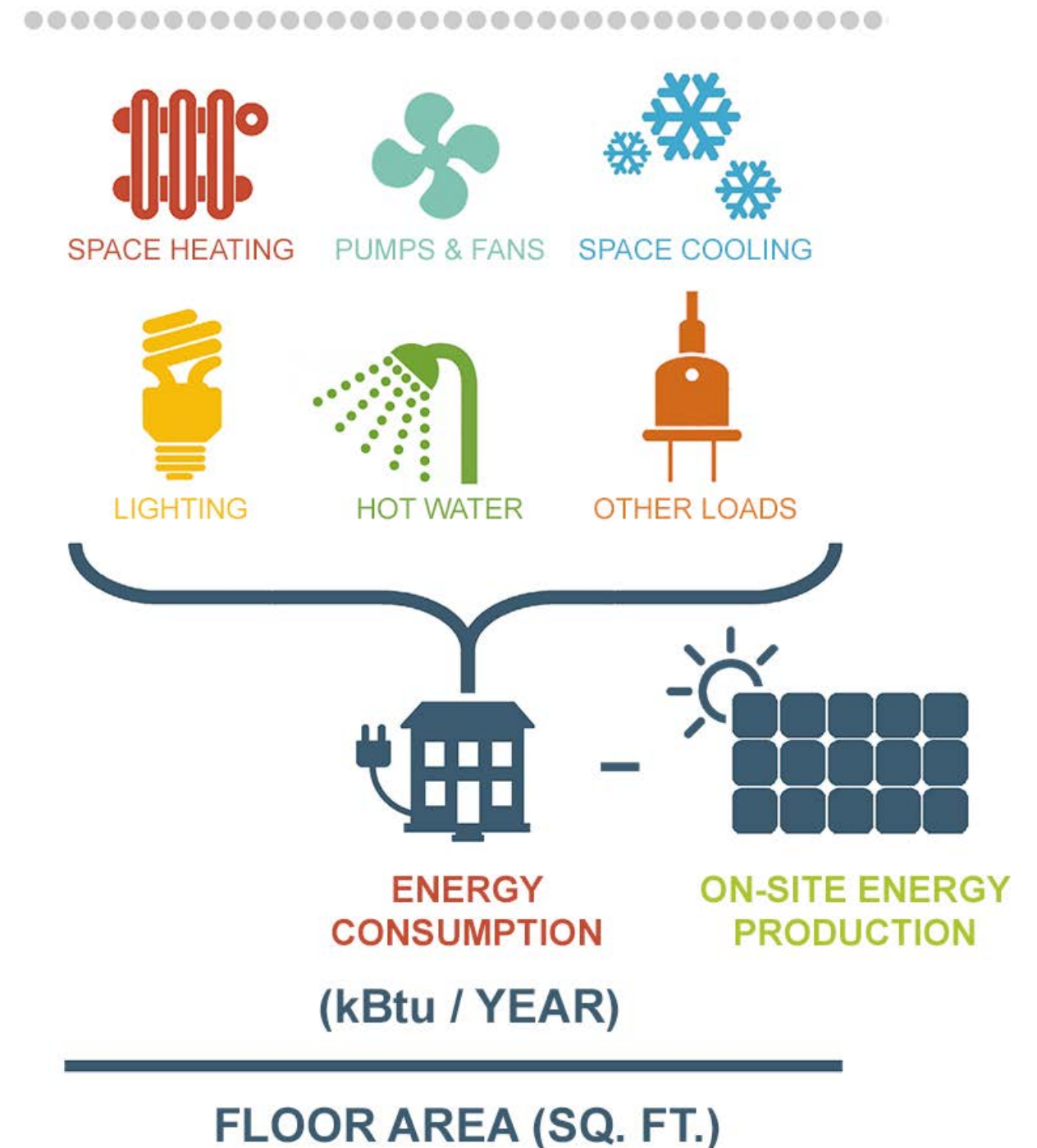
Energy Intensity Unit (EUI) Defined:

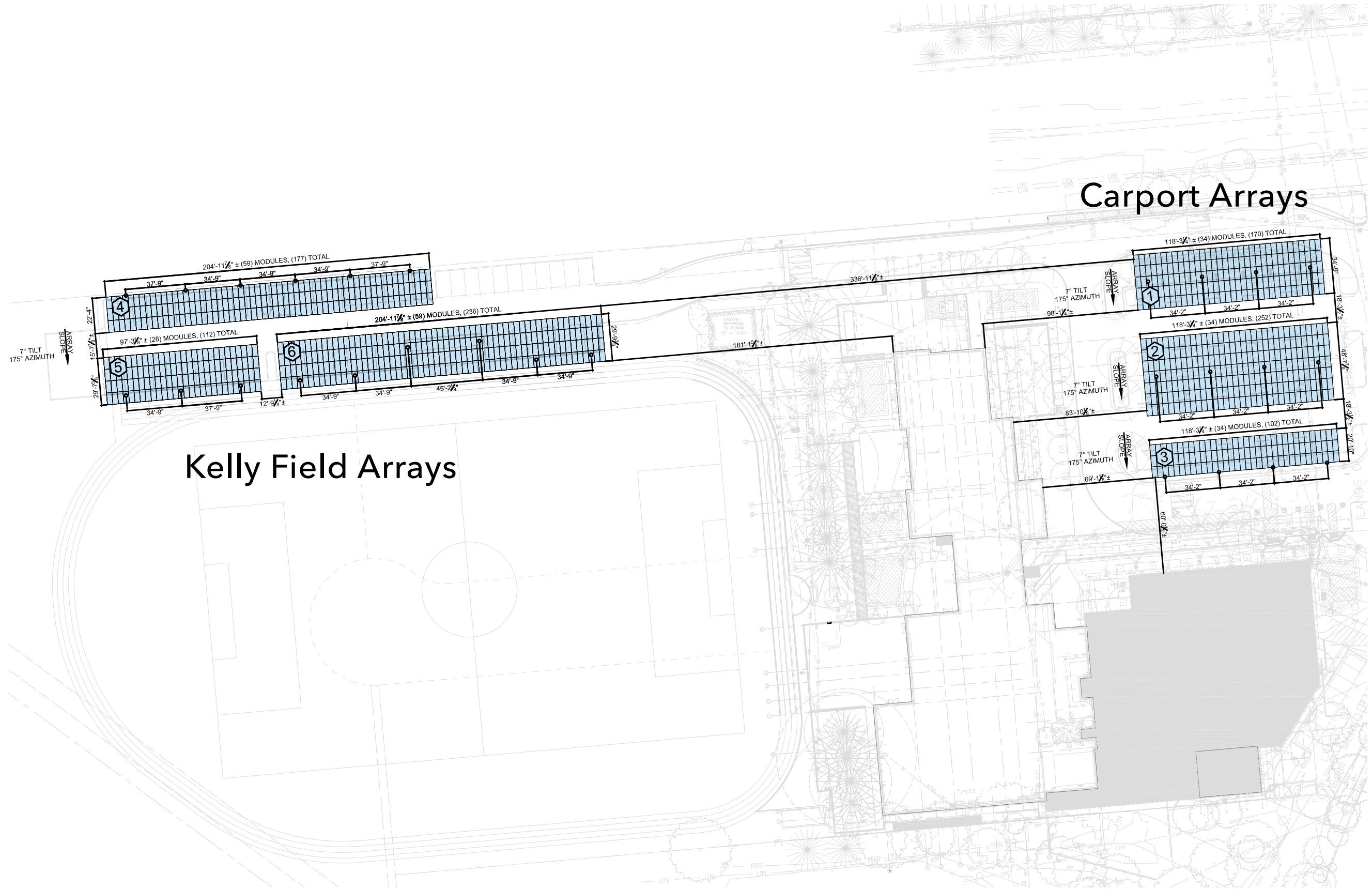
“Energy use intensity (EUI) is an indicator of the energy efficiency of a building’s design and/or operations. EUI can be thought of as the miles per gallon rating of the building industry.”

<https://aiacalifornia.org/energy-use-intensity-eui/>

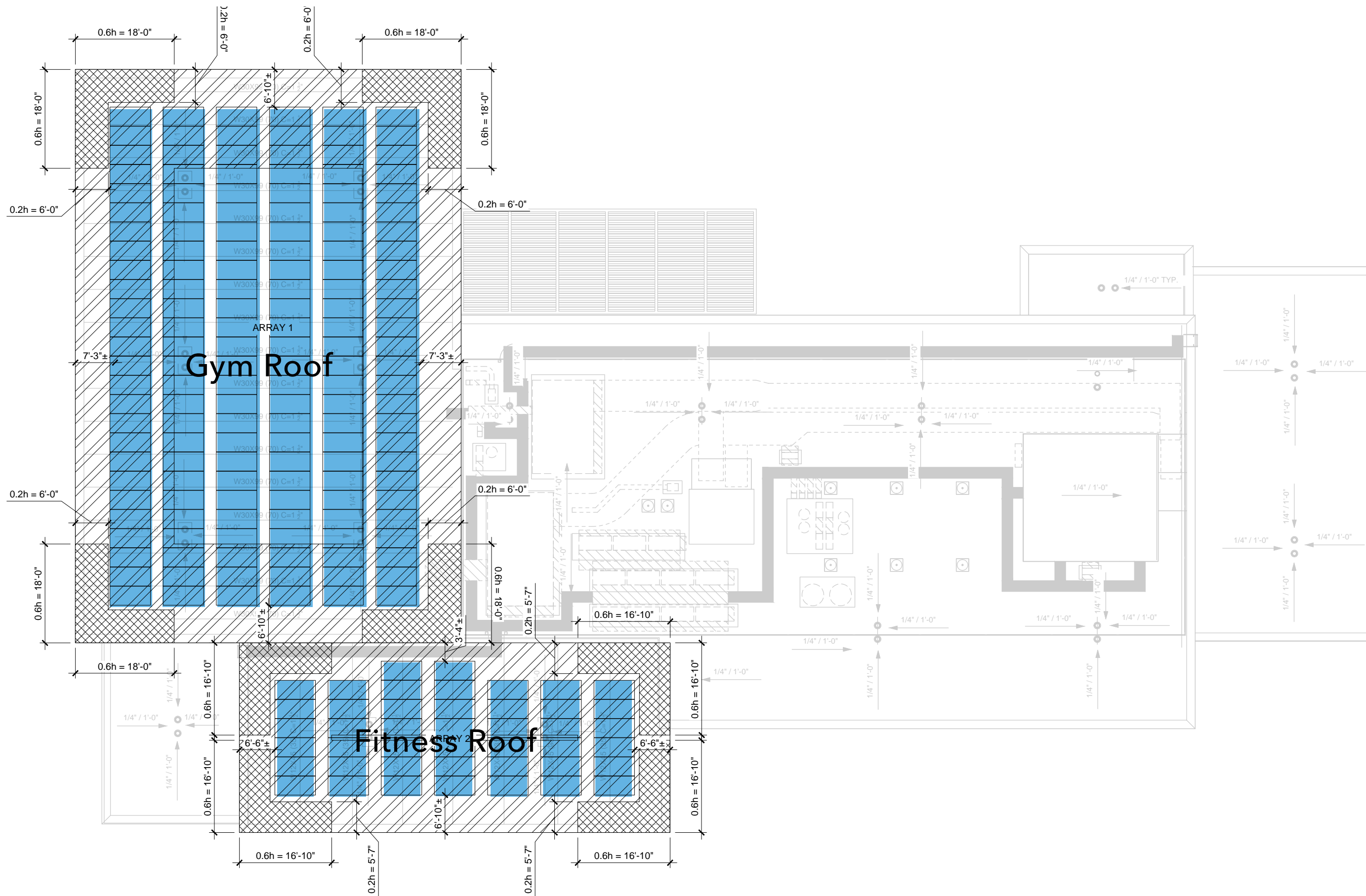
Site Energy Use Intensity (EUI)

MEASURED FOR 365 DAYS





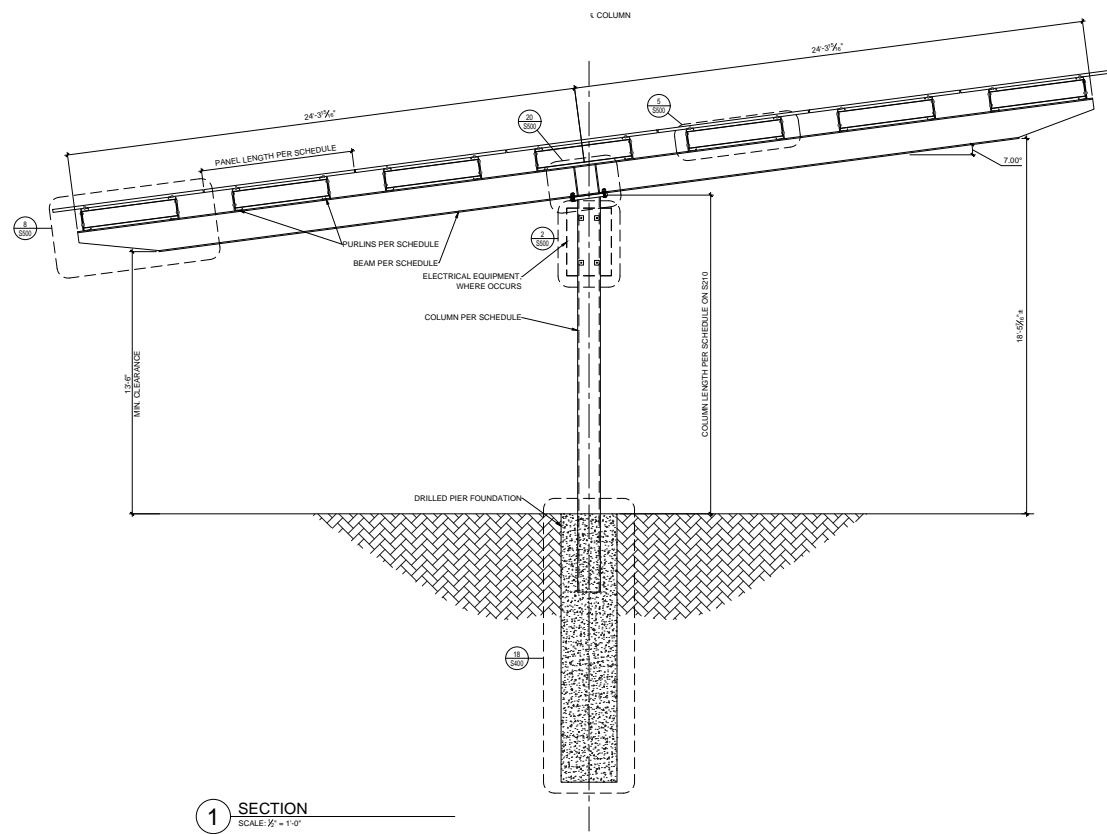
Solar Photovoltaic / Solar Thermal Arrays at Kelly Field + Carports



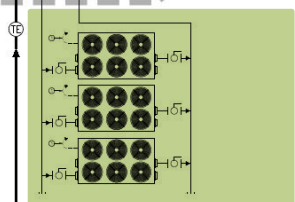
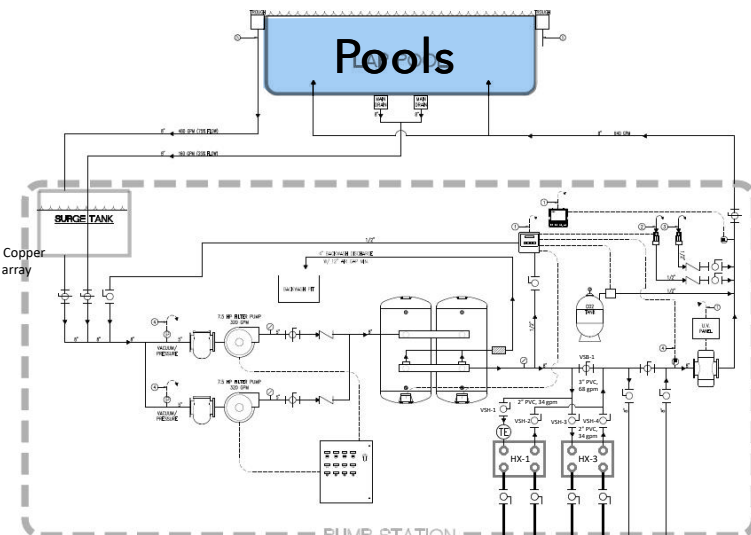
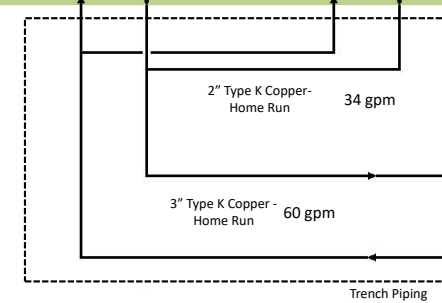
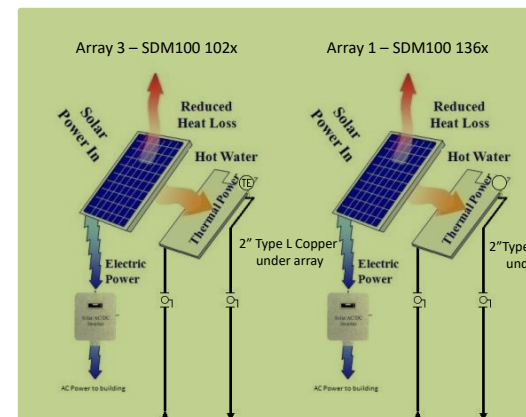
Gym Roof

Fitness Roof

Solar Photovoltaic Arrays at Rooftops

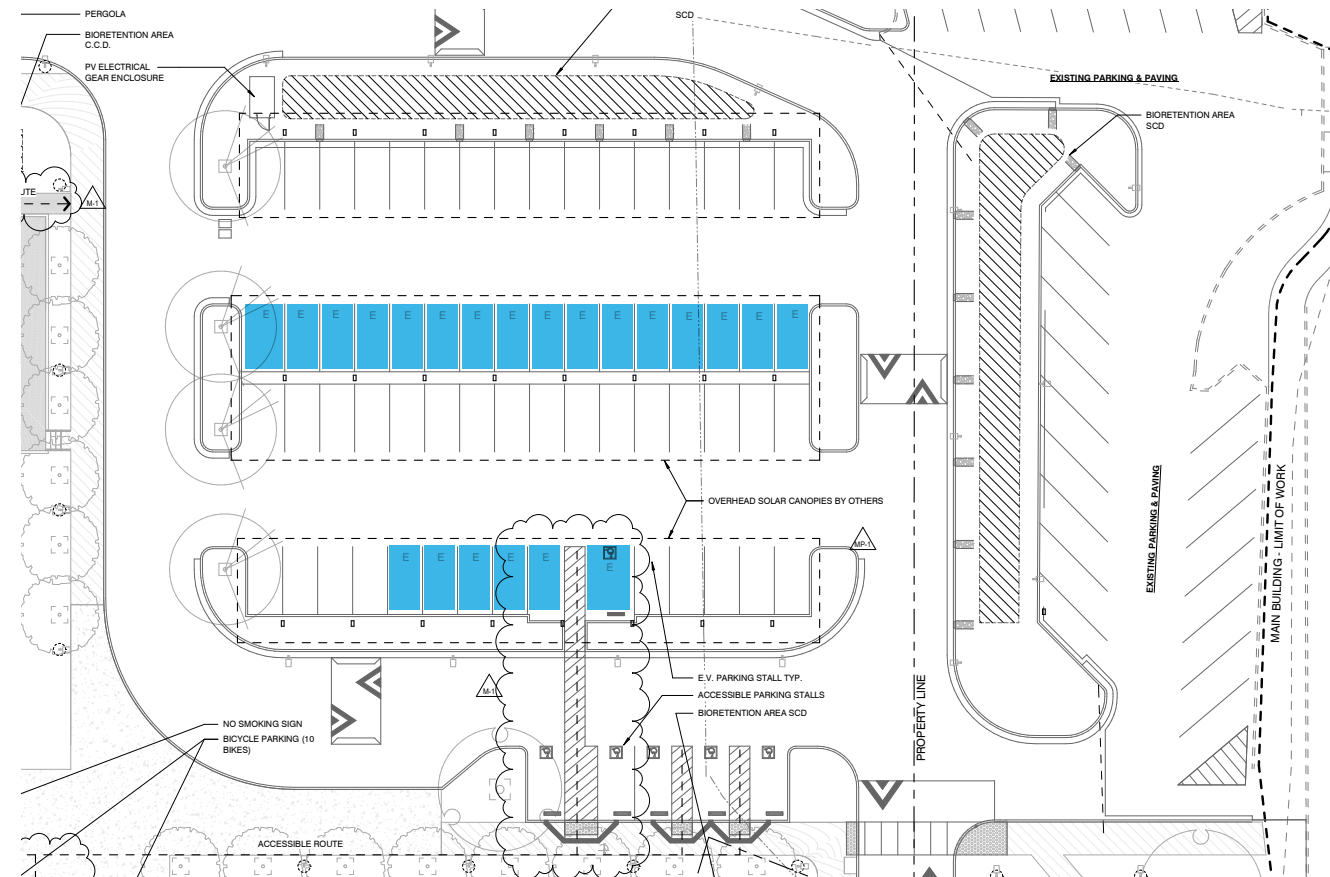
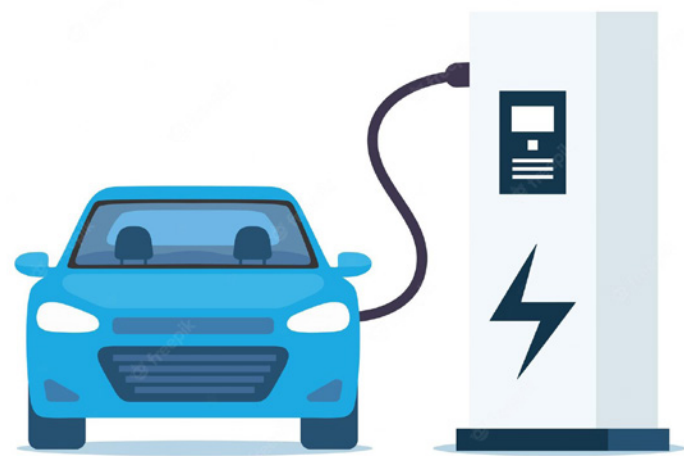


Heat from Sun



Electricity from Sun

Solar Photovoltaic + Solar Thermal Arrays



27 EV Charging Stations

THE MENLO PARK COMMUNITY CAMPUS MICROGRID

Microgrid Defined:

"a small network of electricity users with a local source of supply that is usually attached to a centralized national grid but is able to function independently."



THE MEGAPACK

Applications:

- Renewable Smoothing
- T&D Investment Deferral
- Voltage Support
- Capacity Support
- Microgrid
- Market Participation
- Frequency Regulation



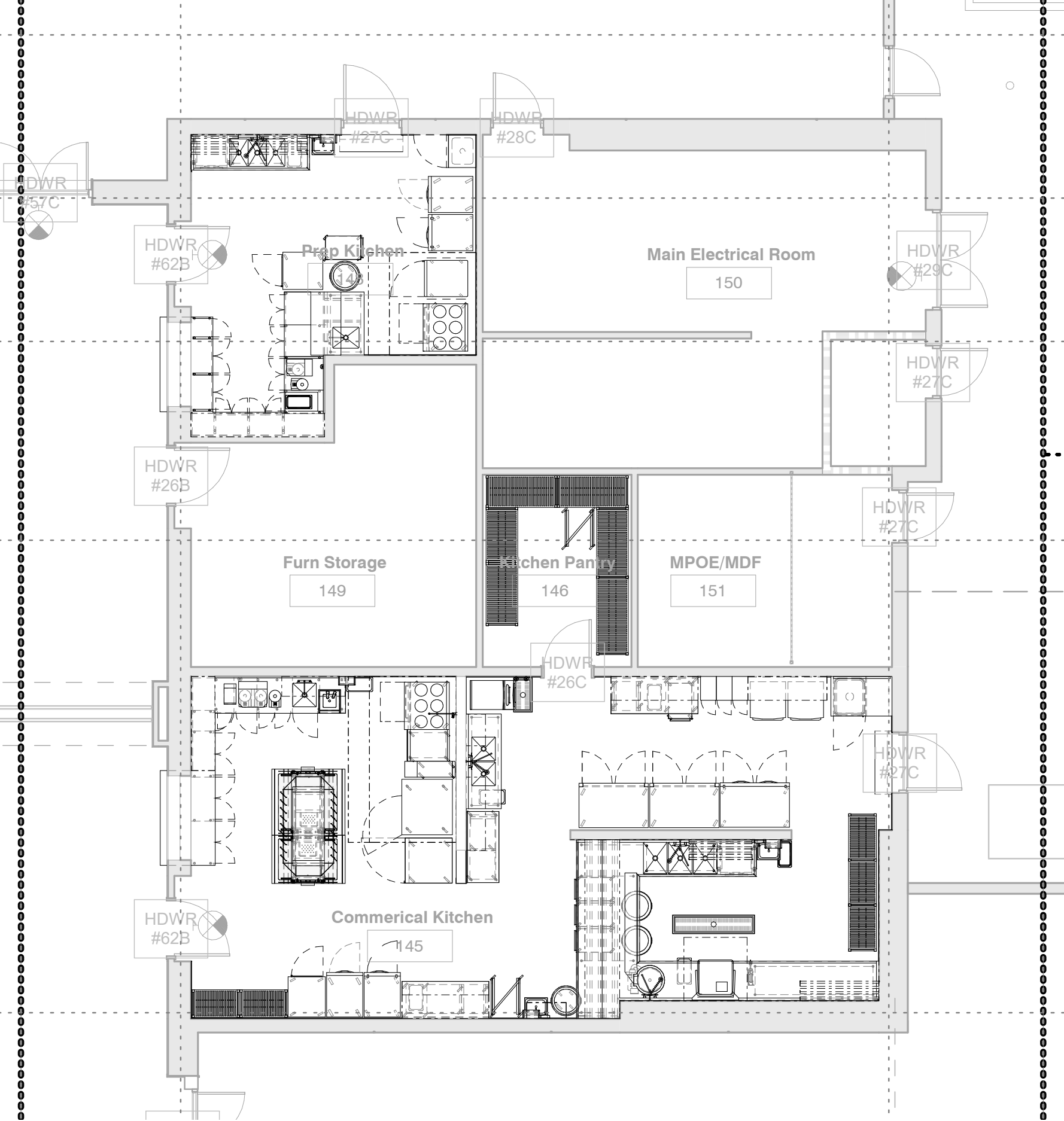
<https://www.tesla.com/megapack>

"... study by the Northeast Energy Efficiency Partnerships found that when units designed specifically for colder regions were installed in the Northeast and Mid-Atlantic regions, the annual savings are around 3,000 kWh (or \$459) when compared to electric resistance heaters, and 6,200 kWh (or \$948) when compared to oil systems."

<https://www.energy.gov/energysaver/air-source-heat-pumps>



Air Source Heat Pumps



All-Electric Commercial Kitchen



Menlo Park Community Campus | Final Planning Submittal Rendering - Children's Terrace

Questions



C2 - PRESENTATION



RECREATION AND COMMUNITY PROGRAMS SURVEY PRELIMINARY RESULTS

Joint meeting – Library Commission and Parks & Recreation Commission – June 22, 2022

Background

- City Council directed staff to conduct an analysis of the city's aquatics program needs including a survey of Menlo Park residents.
- The MPCC Subcommittee expressed interest in leveraging the survey to also gain insight into residents' needs and interests related to programming in the new center.
- Working with the MPCC Subcommittee, staff prepared a survey to gain insight in all these areas.
- The survey is now open to Menlo Park residents through multiple formats including electronic (publicinput.com/communityprograms), paper and in-person, in English and Spanish.

Home / **Resident input wanted for recreation and community programs**

Resident input wanted for recreation and community programs

Published on June 13, 2022

The City of Menlo Park wants to hear from you in an effort to better understand resident uses and needs for recreation programs and other community services. The survey will inform the discussion and consideration of programming needs at the new [Menlo Park Community Campus](#) facility and citywide, including aquatics and other programs and activities. The survey is available in both English and Spanish.

- [English survey](#)
- [Spanish survey](#)

The City Council is tentatively scheduled to review the results of the survey at its regular meeting on July 26.





Survey – Preliminary impressions

The survey is still open and active. This preliminary data will change as more responses come in.

- 258 responses as of June 22, 2022
- 40% of respondents report living in Menlo Park 20+ years
- Neighborhoods with the most responses:
 - 17% - Belle Haven
 - 15% - Central Menlo Park
 - 13% - Sharon Heights

Survey – Preliminary impressions

The survey is still open and active. This preliminary data will change as more responses come in.

- Most frequently visited locations (Once per week or more):
 - 61% - Parks and green spaces
 - 38% - Walking / hiking trails
 - 27% - Public libraries
 - 27% - Swimming pools
 - 26% - Tennis / pickleball courts
 - 22% - Athletic fields



Survey – Preliminary impressions

The survey is still open and active. This preliminary data will change as more responses come in.

- Community programs / classes – “how important” ratings
 - 93% - Programs / classes are focused on the needs of Menlo Park residents
 - 90% - Programs / classes are free / discounted fees for Menlo Park residents
 - 90% - Music / performing arts
 - 89% - Health and wellness / yoga / meditation
 - 88% - Fitness center – weights, resistance, cardio
 - 84% - Dance / movement
 - 81% - Strength / balance training for seniors

Survey – Preliminary impressions

The survey is still open and active. This preliminary data will change as more responses come in.

- Aquatics and swimming – “how important” ratings
 - 96% - Swimming pools are open year-round
 - 95% - Swimming pools are open seven days per week
 - 95% - Swimming pools are focused on the needs of Menlo Park residents
 - 90% - Swimming pools have free/ discounted fees for Menlo Park residents
 - 88% - Beginner’s / children’s swimming lessons have priority
 - 86% - Children / families have priority for play and social time
 - 83% - Adaptive swimming for people with disabilities have priority




Survey – Preliminary impressions

The survey is still open and active. This preliminary data will change as more responses come in.

- Athletic programs – “how important” ratings
 - 97% - Neighborhood / family access to athletic fields for casual / drop-in play
 - 97% - Programs are focused on the needs of Menlo Park residents
 - 92% - Programs are free / discounted fees for Menlo Park residents
 - 95% - Children access to athletic fields for casual / drop-in play
 - 86% - Basketball - casual / drop-in play
 - 86% - Tennis - casual / drop-in play
 - 83% (tie) - Basketball (organized youth league); Gymnastics (youth casual / fun)



 Translate

Menlo Park resident survey – Recreation and community programs

The City of Menlo Park is interested in hearing residents' needs and views about recreation programs and other community services. Please tell us your views by taking this survey.

1. What neighborhood of Menlo Park do you live in now?

Allied Arts / Stanford Park

Belle Haven

Survey – Preliminary impressions

The survey is still open and active. This preliminary data will change as more responses come in.

- Library resources – “how important” ratings
 - 98% - Books in paper format
 - 98% - Wireless internet access (Wi-Fi) in the library
 - 97% - Books that reflect local/neighborhood residents’ cultures, needs and interests
 - 95% - Books with a range of different viewpoints including views I don't agree with
 - 95% - Books that are the newest and most popular bestsellers
 - 95% - Quiet places to read and study

Survey – Preliminary impressions

The survey is still open and active. This preliminary data will change as more responses come in.

- Library resources – “how important” ratings (continued)
 - 94% - Storytimes for young children
 - 94% - Books in electronic / digital formats
 - 89% - Books that are classics that I read in school / as a child
 - 87% - Wireless internet “Hot spots” for checkout / take home
 - 85% - Books written in languages other than English

Survey – Preliminary impressions

The survey is still open and active. This preliminary data will change as more responses come in.

- Community resources and services – “how important” ratings
 - 91% - Homework help for children and teen after school
 - 91% - English as Second Language (ESL) resources
 - 90% - Teens have space to socialize, read and study after school and weekends
 - 88% - Job skills / job readiness / job seeker resources and training
 - 87% - Adult literacy tutoring
 - 86% - Food distribution, food insecurity advise and support
 - 86% - Health care navigation and support



Discussion and feedback

Key insights

- Focus on the needs of Menlo Park residents, especially neighborhood residents
- Explore free / discounted programs for Menlo Park residents
- Focus on casual / drop in / family access
- Multi-generational services – children, teens, seniors
- Adaptive / all abilities
- Books, study, tutoring, literacy
- Resources and services – jobs, health/wellness, food security

D1 - PRESENTATION



MENLO PARK COMMUNITY CAMPUS PROGRAMMING ELEMENTS

Joint meeting – Library Commission and Parks & Recreation Commission – June 22, 2022







Overview

1. Guiding principles
2. MPCCC Subcommittee and working group report
3. Menlo Park resident survey – preliminary impressions
4. Discussion and feedback



Guiding principles

The City of Menlo Park provides services and infrastructure that contribute to quality-of-life for all Menlo Park residents. In so doing, the City strives to balance the resources and requirements of each area of the city in an equitable manner for all residents, in all neighborhoods of the City. The City of Menlo Park prioritizes social justice in decisions that affect residents' lives:

- The fair, just and equitable management of all institutions serving the public directly or by contract;
- The fair, just and equitable distribution of public services and implementation of public policy; and
- The commitment to promote fairness, justice, and equity in the formation of public policy.

Excerpted from Cost Recovery Policy, City Council Procedure #CC-10-001, March 23, 2021



MPCC Subcommittee

- Mayor Nash and City Councilmember Taylor
- City Council created the MPCC Subcommittee to work with City staff and the community on the MPCC project.
- MPCC Subcommittee created a working group of Menlo Park residents to support and advise the subcommittee's work.
- May 24, 2022 – MPCC Subcommittee report to City Council
 - Recent activities
 - Summary of recent working group meetings
 - Working group ideas and suggestions

MPCC Subcommittee - working group

Working group members represent interests such as Bayfront neighborhoods, stakeholder constituencies, diverse user ages and abilities, and city commissions:

- Rachel Bickerstaff
- Rose Bickerstaff
- Sheryl Bims
- Mayrin Bunyagidj
- Jacqui Cebrian
- David Erhart
- Susan Erhart
- Israel Harris
- Jennifer Johnson
- Pam Jones
- Tim R.
- Michele Tate
- Tracie V.
- Shontelle W.



Working group – general feedback

- New, different, and fresh approach
- Desire to have a local hiring and procurement preference prioritizing the Bayfront, Citywide, and any displaced residents and businesses
- Review the MPCC programming and operations budget
- Start with a review of current and prior community center activities in Menlo Park as well as surrounding communities
- Outreach should include: people lacking technology access or skills; Spanish speakers
- Recognition and awards to people in community who created the vision and dialogue

Working group – operational ideas

- Front desk providing city services, assistance, city information, Community Resources/Bulletin Board
- Medical Training for staff including CPR
- Attendant for athletic facilities to keep space clean and sanitary
- Roles and rules for public spaces – Library, Makerspace, etc.
 - Supervision of children, Safety standards, noise levels
 - Field Usage Policy
- Fee structure, scholarships
- Focus on Menlo Park residents and particularly local Bayfront community (as opposed to renting out to others for cost recovery.)

Working group – programming ideas

Library and makerspace

- Story time
- Tutoring time
- Librarian help hours (learning library skills and systems, etc.)
- Host adult/child or adult/teen book clubs
- Teen space - teens play instruments or listen to music together
- Makerspace - large tables for workstations, 3D printer
 - Pottery class including kiln
 - Sewing classes including sewing machines
 - Woodshop

Working group – programming ideas

Athletic facility

- Strength training for women
- Strength/balance training for seniors
- Gymnastics classes for kids with special needs
- Fitness Center – safe, state of the art equipment, roomy
- Teen fitness offering inclusive of teens with disabilities
- Movement Studio – intentionally designed
 - Functional exercise with cardio



Working group – programming ideas

Aquatics / pools

- Adaptive swimming for people with disabilities
- Senior pool exercise class
- Lots of free swim time in the more heated pool with ramp



Working group – programming ideas

Educational opportunities

- Coding, Engineering, Science (ongoing classes)
- Health and Nutrition Classes for ALL
- Basic Life Skills - Budgeting, how to manage money, job seeking (resumes, interview skills, dress for success), social awareness
- College programming
- Driving school
- Computer lab

Working group – programming ideas

Educational opportunities (continued)

- Environmental education and impact - storyboards/classes based on MPCC sustainability
- Bike repair station/classes (example: Live In Peace organization)
- Cooking classes
- Teaching garden
- Adaptive recreation classes including mixed media art, karate, fun fitness, cooking, dance.

Next steps

- A follow-up City Council discussion about the MPCC project, including the resident survey results, operational plan milestones update, and updates related to the MPCC project budget, is tentatively targeted for July 26.



Discussion and feedback

Key considerations

- Guiding principles
- Focus on needs of Menlo Park residents
- Working group - programming ideas
 - Library and makerspace
 - Athletic facility
 - Educational opportunities
 - Aquatics / pools
- Free / discounted programs for Menlo Park residents



Discussion and feedback

Commission feedback

-