



Parks and Recreation Commission Library Commission



SPECIAL JOINT MEETING MINUTES

Date: 6/22/2022
Time: 6:30 p.m.
Location: Zoom

A. Call To Order

Library Commission Chair Cohen called the meeting to order at 6:35 p.m.

B. Roll Call

Library Commission

Present: Cohen, Erhart, Hadrovic, Singh (arrived 7:02 p.m.), Velagapudi

Absent: Leep, Zasslow

Parks and Recreation Commission

Present: Brosnan, Bryman, Bunyagidj, Diepenbrock, Joshua, Theriault

Absent: Baskin,

Staff: Library and Community Services Director Sean Reinhart, Acting Recreation Supervisor Rondell Howard, Assistant Library Services Director Szegda

C. Presentations and Proclamations

C1. Menlo Park Community Campus project environmental sustainability features

Hart Howerton representatives Jeff Till, Jon Swain, and Paul Mattingly made the presentation (Attachment).

C2. Preliminary results of Menlo Park resident survey – recreation and community programs

Director Reinhart made the presentation (Attachment).

- Brian Kissel requested clarification on the survey deadline and an additional survey focused on pickleball users.

D. Study Session

D1. Menlo Park Community Campus operational planning

Director Reinhart made the presentation (Attachment).

E. Informational Items

E2. Library and Community Services department proposed fiscal year 2022-23 operating budget

Director Reinhart introduced the item.

F. Commissioner Reports

Library Commissioner Erhart reported that a letter sent out to library support groups was received favorably by Literacy Partners and the Friends of the Library. Both groups expressed interest in presenting at a future Library Commission meeting.

Library Commissioner Hadrovic will attend the upcoming Library Foundation board meeting and will discuss the letter to support groups.

Parks and Recreation Commissioner Brosnan welcomed the newly appointed members of the Commission.

G. Adjournment

Library Commission Chair Cohen adjourned the meeting at 8:18 p.m.

Nick Szegda, Assistant Library Services Director

MENLO PARK COMMUNITY

SUSTAINABILITY OVERVIEW JUNE 22, 2022

CITY OF MENLO PARK

META PLATFORMS

HART HOWERTON

PAE ENGINEERS

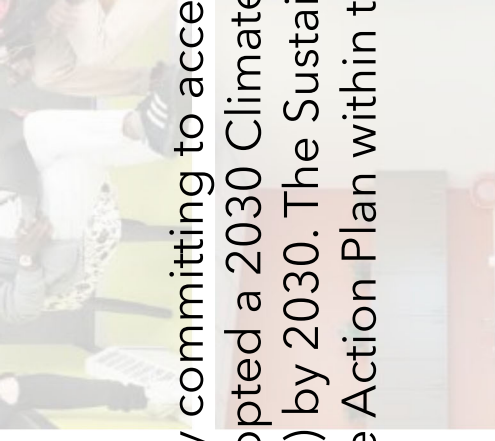
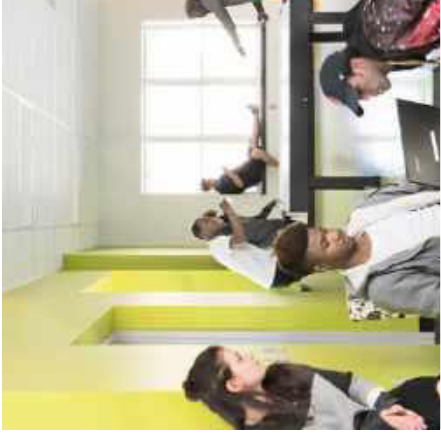
DCI ENGINEERS

KPFF ENGINEERS

STOK

OPTONY / ENGIE SA





Sustainability

The City Council declared a climate emergency committing to address climate change at a local level and adopted a 2030 Climate bold goal to be carbon neutral (zero emissions) by 2030. The Sustainability and/or supports implementation of the Climate Action Plan within the community at large.



Currently, there are six Climate Action Plan strategies:

- **Electrify 95% of existing buildings**
- Increasing electric vehicle usage and decreasing gasoline
- **Expand access to electric vehicle charging** for multifamily and
- Reduce vehicle miles traveled by 25%
- **Eliminate the use of fossil fuels from municipal (city) operations**
- Develop a climate adaptation plan to protect the community from sea level flooding



MENLO PARK COMMUNITY

Key Project Sustainability and Resilience Goals

All Electric, Zero Combustion, Net Zero Energy Project

USGBC LEED Platinum Certification

On Site Renewable Energy Generation

Naturally Daylit Spaces



PROPERTY BOUNDARY

EXTENDING CARPORT WOULD REQUIRE REMOVING 2 NON-HERITAGE TREES

BLEACHERS BELOW TO REMAIN

Kelly Park Track & Field

NEW 2-STORY MENLO PARK COMMUNITY CAMPUS BUILDING

D

D

B

E

C

D

I

H

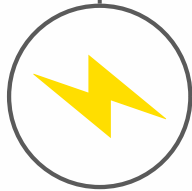
G

A

PG&E Substation

ALL-ELECTRIC BUILDING

No on-site combustion of gas or diesel.
Electric heating, cooling, and hot water.



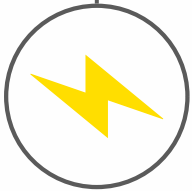
INDOOR ENVIRONMENTAL QUALITY

Natural daylighting, 100 % outside air supply, and non-toxic materials.



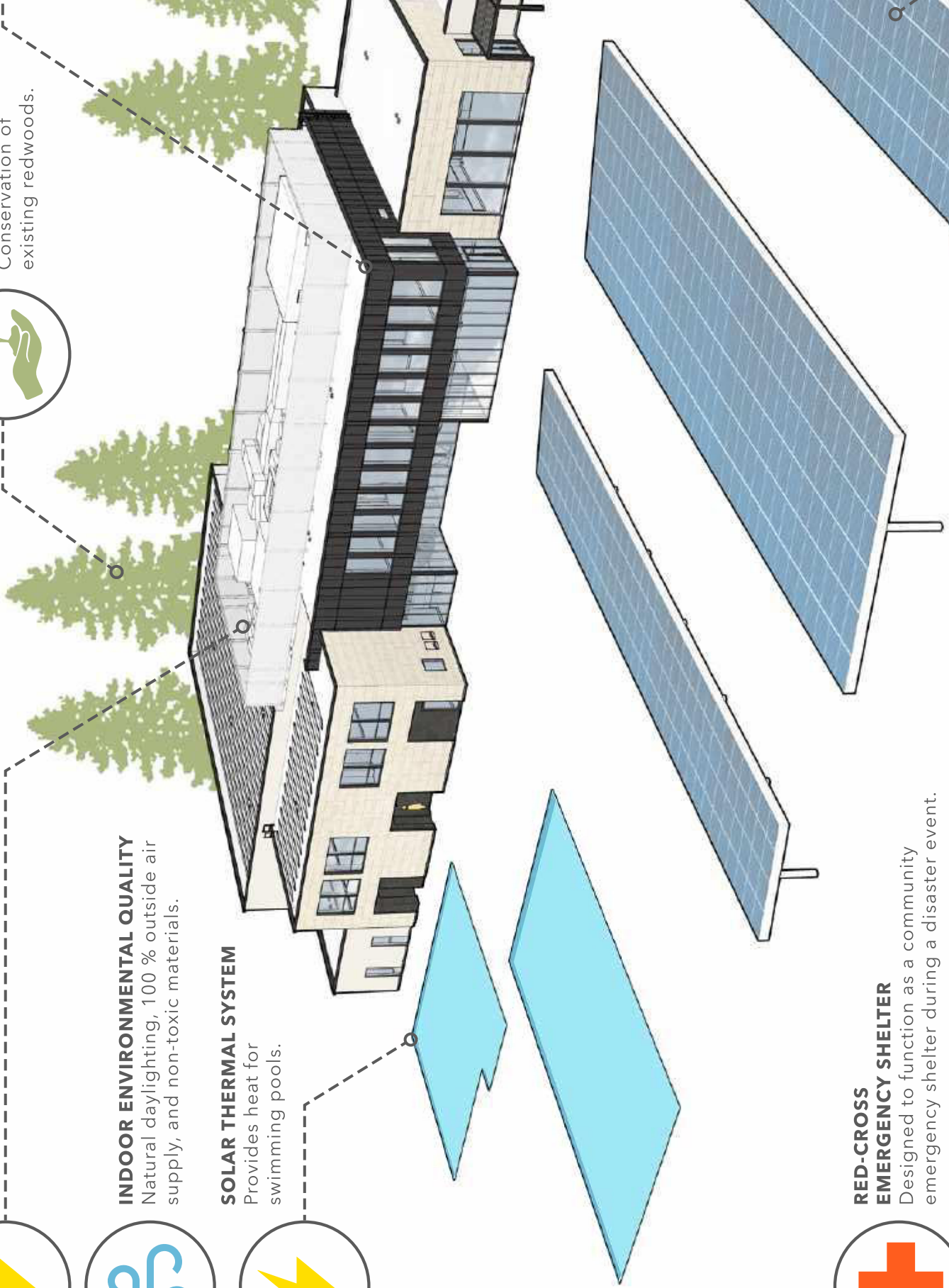
SOLAR THERMAL SYSTEM

Provides heat for swimming pools.



HERITAGE TREES

Conservation of existing redwoods.



RED-CROSS EMERGENCY SHELTER

Designed to function as a community emergency shelter during a disaster event.





LEED NC v4 SCORECARD

Menlo Park Community Campus

AWARDED	LIKELY PURSUING	NO PURSUING	Phase	Credit Name	Points Available
1	1		D	Credit	1
Totals					1

16			D	Credit	16
1			D	Credit	1
2			D	Credit	2
3			D	Credit	5
5			D	Credit	5
1			D	Credit	1
1			D	Credit	1
1			D	Credit	1
Totals					16

LOCATION & TRANSPORTATION

AWARDED

LIKELY PURSUING

NO PURSUING

Phase

Credit Number

REQUIRED	D	Prereq	Storage and Construction at Building Life-Cycle
1	1	3	LEED v4.1: Built
2	1	1	LEED v4.1: Built
2	2		LEED v4.1: Built
2	2		C&D Waste Managem
Totals			
8	2	3	

MATERIALS & RESOURCES

AWARDED	LIKELY PURSUING	NO PURSUING	Phase	Credit Name	Points Available
1			C	Prereq	NA
1			D	Credit	1
1	1		D	Credit	2
1			D	Credit	1
2	1		D	Credit	3
2			D	Credit	2
1			D	Credit	1
Totals					10

SUSTAINABLE SITES

INDOOR ENVIRONMENTAL QUALITY

REQUIRED	D	Prereq	Minimum Indoor Environmental Quality
2			Enhanced Indoor Environmental Quality
3			LEED v4.1: Low Emission Building
1			Construction IAQ
2			Indoor Air Quality
1			Thermal Comfort
1	1		Interior Lighting
1	1		Daylight - Instial glazing
1			Quality Views - Visual Connection to Nature
Totals			
12	1	3	

REQUIRED	D	Prereq 1	Outdoor Water Use Reduction
1			Indoor Water Use Reduction
6			Building-Level Water Metering
1			Outdoor Water Use Reduction
2			Indoor Water Use Reduction
1			Cooling Tower Water Use
1			Water Metering
Totals			
8			11

WATER

INNOVATION**

REQUIRED	D	Prereq	O+M Starter Kit
1			Integrative Analysis
1			Circular Productivity
1			Green Education
1			v4.1 Purchasing
1			LEED Accredited
Totals			
6			

**Innovation in Design includes Exemplary Performance

REQUIRED	D	Prereq 1	Fundamental Commissioning and Verification
18			Minimum Energy Performance
1			Building-Level Energy Metering
5			Fundamental Refrigerant Management
1			Enhanced Commissioning
2			LEED v4.1: Optimize Energy Performance
1			Advanced Energy Metering
5			Demand Response
1			LEED v4.1: Renewable Energy
Totals			
30			33

ENERGY & ATMOSPHERE

REGIONAL**

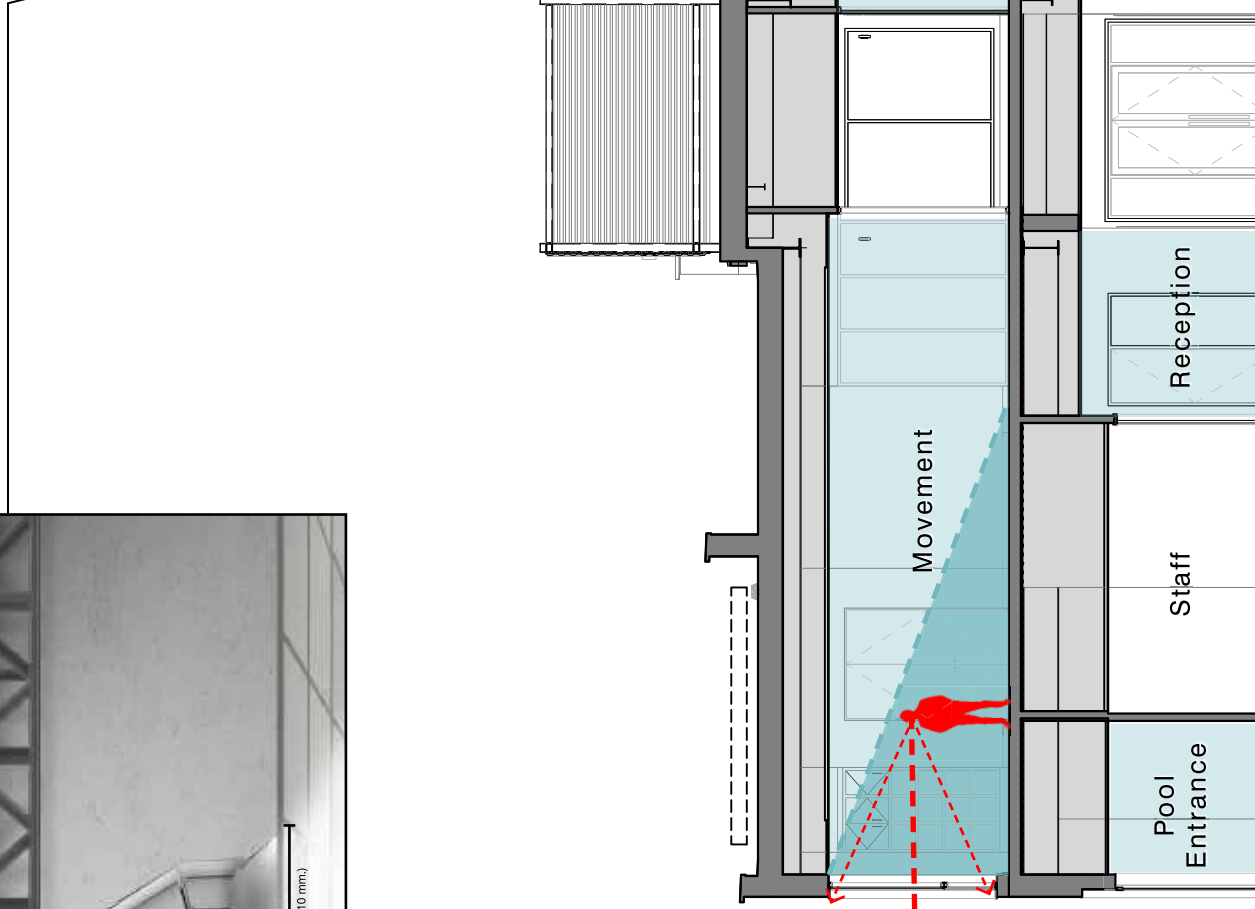
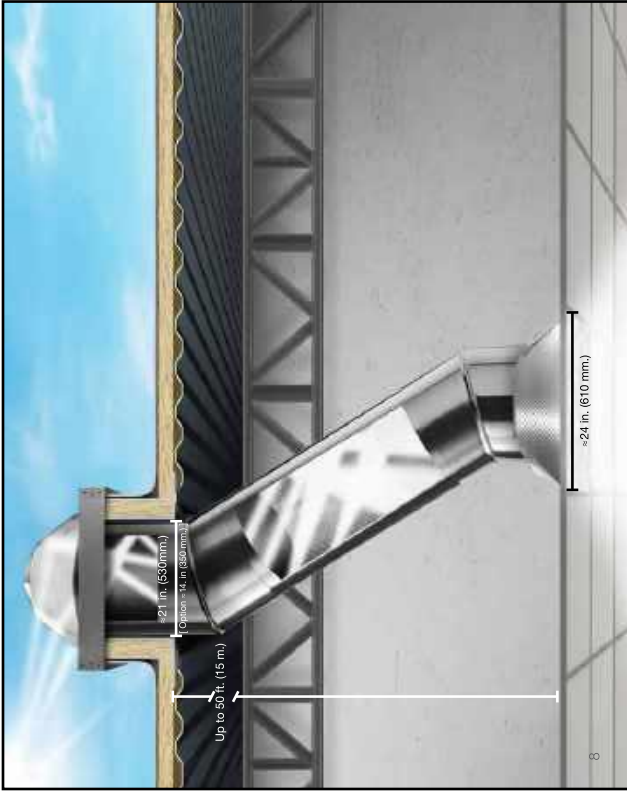
REQUIRED	D	Prereq	Optimize Energy Performance
1			BPDO - Source Reduction
1			Rainwater Management
1			Indoor Water Use Reduction
1			Access to Quality Outdoor Spaces
1			Building Life Cycle
Totals			
3			3

**only 4 Regional Credits are Applicable

Confirmed Certification

Awarded + Likely + Pursuing

Awarded + Likely + Pursuing



A

Menlo Park Reach Codes

“The 2019 California Building Standard
the California Code of Regulation will take
on January 1, 2020. The City of Menlo Park
groundbreaking local amendments to the
Building Code that would **require electric
only fuel source for new buildings** (n

Energy Intensity Unit (EUI) Defined:

“Energy use intensity (EUI) is an indicator of the energy efficiency of a building’s design and/or operations. EUI can be thought of as the miles per gallon rating of the building industry.”



SPACE HEAT

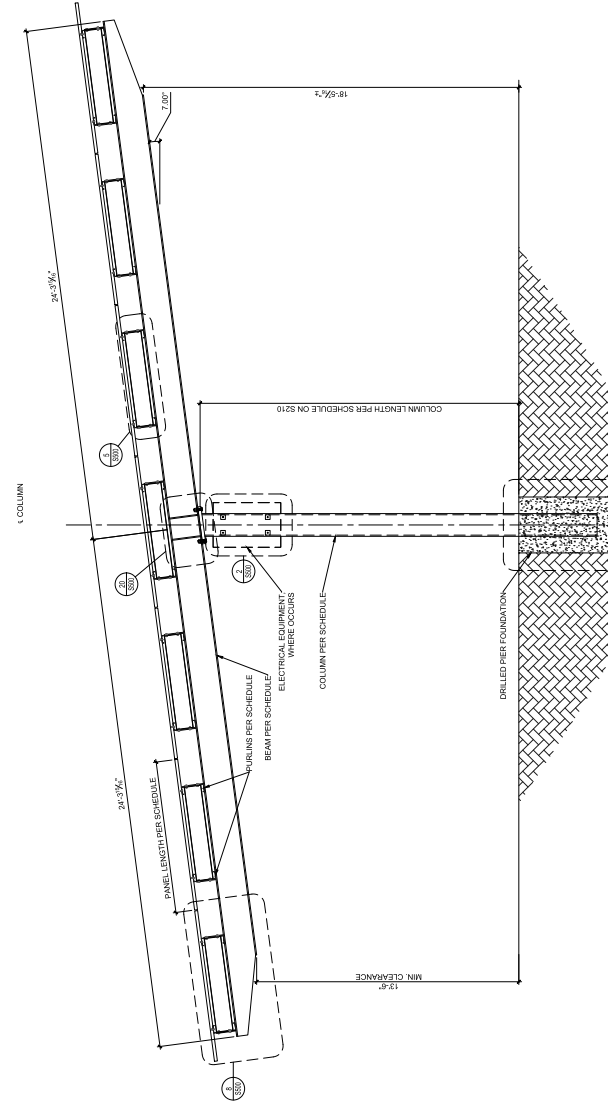
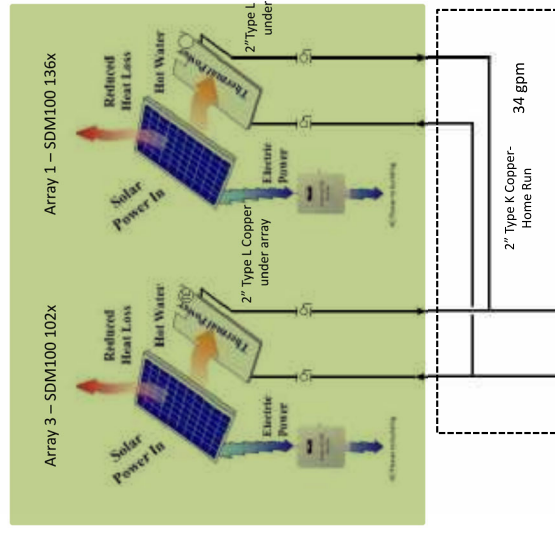


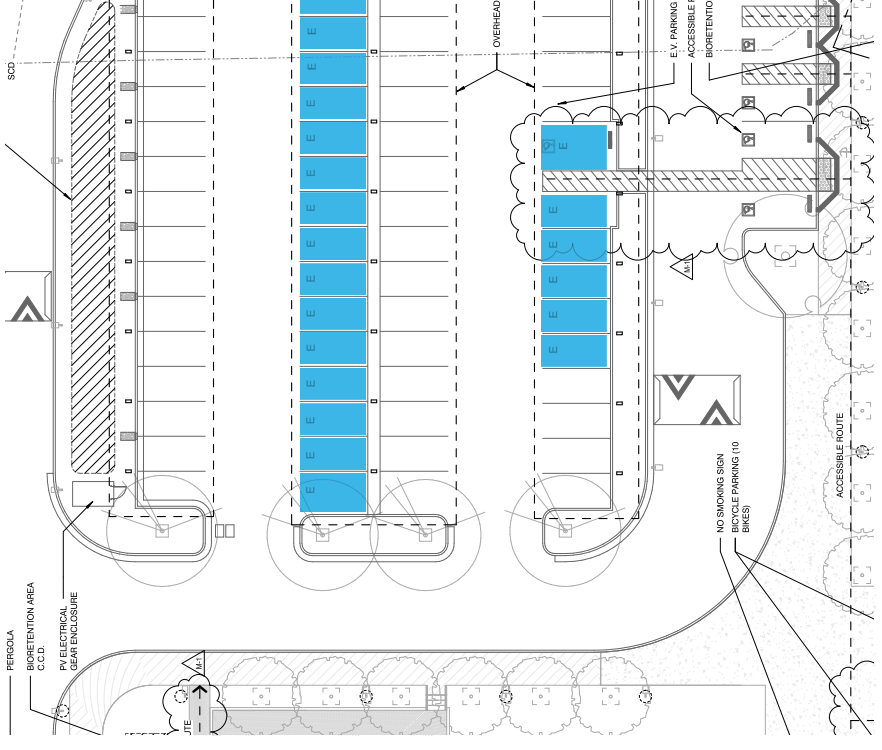
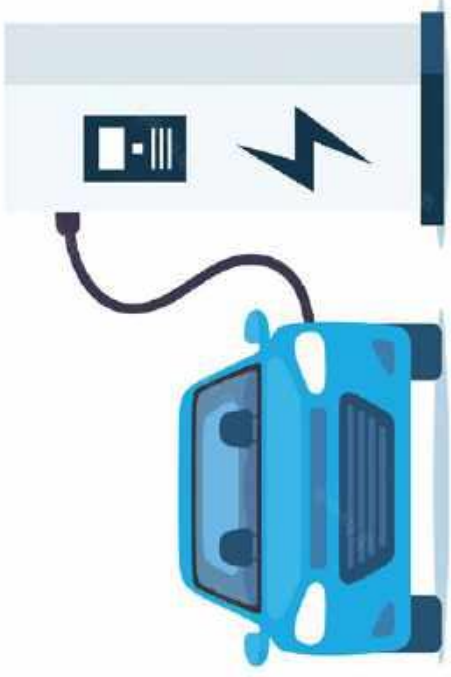
LIGHTING





Heat from Sun





THE MENLO PARK COMMUNITY CAMPUS MICROGRID

Microgrid Defined:

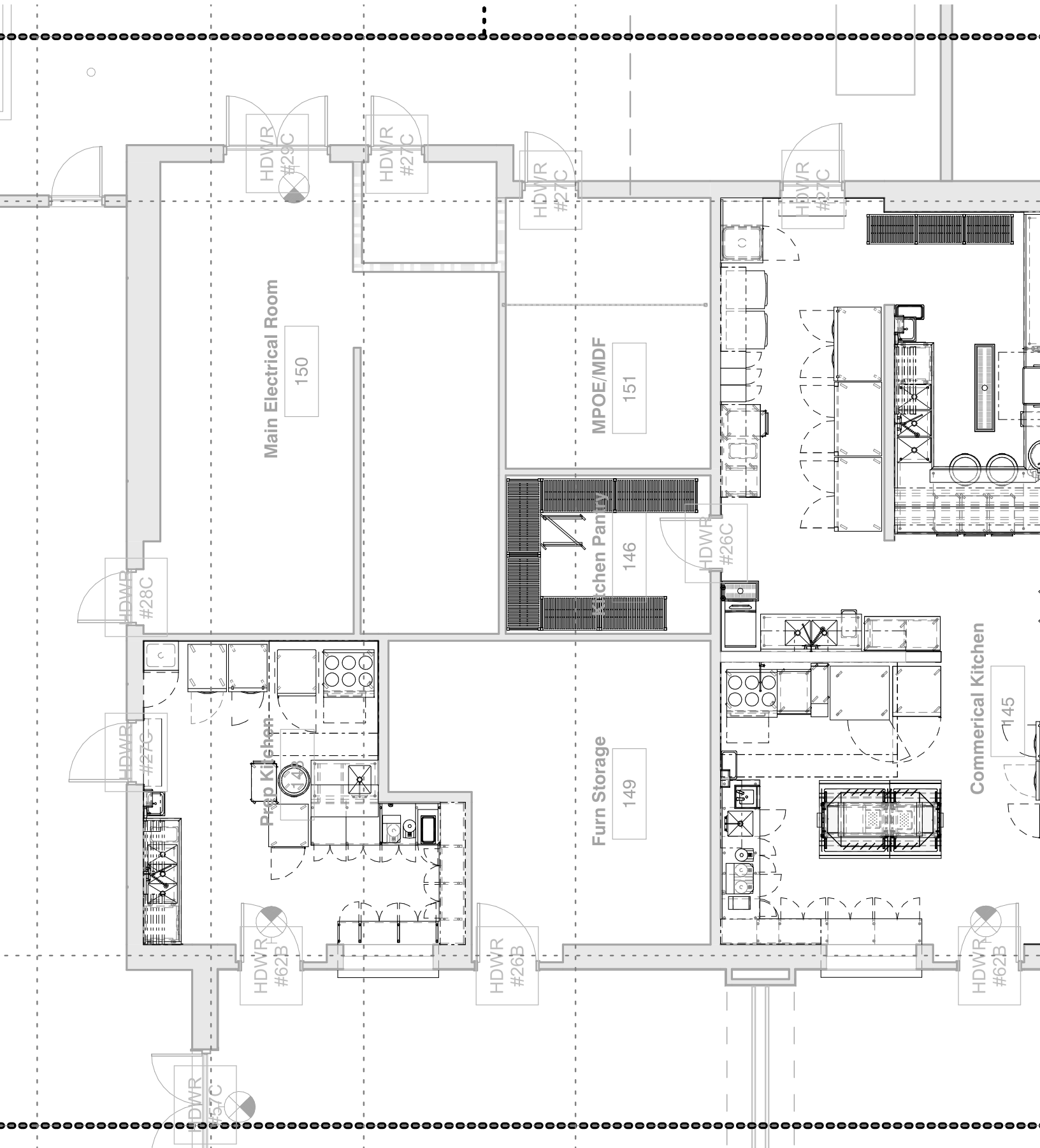
"a small network of electricity users with a local source of supply that is usually attached to a centralized national grid but is able to function independently."



" ... study by the Northeast Energy Efficiency Partnerships found that when units designed specifically for colder regions were installed in the Northeast and Mid-Atlantic regions, the annual savings are around 3,000 kWh (or \$459) when compared to electric resistance heaters, and 6,200 kWh (or \$948) when compared to oil systems."

<https://www.energy.gov/energysaver/air-source-heat-pumps>









Questions

C2 - PRESENTATION

RECREATION AND COMMUNITY PROGRAMS SU PRELIMINARY RESULTS

Joint meeting – Library Commission and Parks and Recreation Commission – June 22, 2022

Background

- City Council directed staff to conduct an analysis of the city's additional program needs including a survey of Menlo Park residents.
- The MPCC Subcommittee expressed interest in leveraging the survey to also gain insight into residents' needs and interests related to programming in the new center.
- Working with the MPCC Subcommittee, staff prepared a survey instrument with insight in all these areas.
- The survey is now open to Menlo Park residents through multiple formats including electronic (publicinput.com/communityprogram) and in-person, in English and Spanish.

Home / **Resident input wanted for recreation and community programs**

Resident input wanted for recreation and community programs

Published on June 13, 2022

The City of Menlo Park wants to hear from you in an effort to better understand resident uses and needs for recreation programs and other community services. The survey will inform the discussion and consideration of programming needs at the new [Menlo Park Community Campus facility and citywide](#), including aquatics and other programs and activities. The survey is available in both English and Spanish.

- [English survey](#)
- [Spanish survey](#)

The City Council is tentatively scheduled to review the results of the survey at its regular meeting on July 26.



Survey – Preliminary impressions

The survey is still open and active. This preliminary data will as more responses come in.

- 258 responses as of June 22, 2022
- 40% of respondents report living in Menlo Park 20+ years
- Neighborhoods with the most responses:
 - 17% - Belle Haven
 - 15% - Central Menlo Park
 - 13% - Sharon Heights

Survey – Preliminary impressions

The survey is still open and active. This preliminary data will as more responses come in.

- Most frequently visited locations (Once per week or more):
 - 61% - Parks and green spaces
 - 38% - Walking / hiking trails
 - 27% - Public libraries
 - 27% - Swimming pools
 - 26% - Tennis / pickleball courts
 - 22% - Athletic fields

Survey – Preliminary impressions

The survey is still open and active. This preliminary data will as more responses come in.

- **Community programs / classes – “how important” ratings**
 - 93% - Programs / classes are focused on the needs of Menlo Park residents
 - 90% - Programs / classes are free / discounted fees for Menlo Park residents
 - 90% - Music / performing arts
 - 89% - Health and wellness / yoga / meditation
 - 88% - Fitness center – weights, resistance, cardio
 - 84% - Dance / movement
 - 81% - Strength / balance training for seniors

Survey – Preliminary impressions

The survey is still open and active. This preliminary data will as more responses come in.

- Aquatics and swimming – “how important” ratings
 - 96% - Swimming pools are open year-round
 - 95% - Swimming pools are open seven days per week
 - 95% - Swimming pools are focused on the needs of Menlo Park residents
 - 90% - Swimming pools have free/ discounted fees for Menlo Park residents
 - 88% - Beginner’s / children’s swimming lessons have priority
 - 86% - Children / families have priority for play and social time
 - 83% - Adaptive swimming for people with disabilities have priority

Survey – Preliminary impressions

The survey is still open and active. This preliminary data will as more responses come in.

- Athletic programs – “how important” ratings
 - 97% - Neighborhood / family access to athletic fields for casual / drop-in
 - 97% - Programs are focused on the needs of Menlo Park residents
 - 92% - Programs are free / discounted fees for Menlo Park residents
 - 95% - Children access to athletic fields for casual / drop-in play
 - 86% - Basketball - casual / drop-in play
 - 86% - Tennis - casual / drop-in play
 - 83% (tie) - Basketball (organized youth league); Gymnastics (youth cas



Menlo Park resident survey - Recreation and community programs

The City of Menlo Park is interested in hearing residents' needs and views about recreation programs and other community services. Please tell us your views by taking this survey.

1. What neighborhood of Menlo Park do you live in now?

Allied Arts/ Stanford Park

Belle Haven

Survey – Preliminary impressions

The survey is still open and active. This preliminary data will as more responses come in.

- **Library resources – “how important” ratings**
 - 98% - Books in paper format
 - 98% - Wireless internet access (Wi-Fi) in the library
 - 97% - Books that reflect local/neighborhood residents’ cultures, needs and interests
 - 95% - Books with a range of different viewpoints including views I don't agree with
 - 95% - Books that are the newest and most popular bestsellers
 - 95% - Quiet places to read and study

Survey – Preliminary impressions

The survey is still open and active. This preliminary data will as more responses come in.

- **Library resources – “how important” ratings (continued)**
 - 94% - Storytimes for young children
 - 94% - Books in electronic / digital formats
 - 89% - Books that are classics that I read in school / as a child
 - 87% - Wireless internet “Hot spots” for checkout / take home
 - 85% - Books written in languages other than English

Survey – Preliminary impressions

The survey is still open and active. This preliminary data will be updated as more responses come in.

- **Community resources and services – “how important” ratings**
 - 91% - Homework help for children and teen after school
 - 91% - English as Second Language (ESL) resources
 - 90% - Teens have space to socialize, read and study after school and v
 - 88% - Job skills / job readiness / job seeker resources and training
 - 87% - Adult literacy tutoring
 - 86% - Food distribution, food insecurity advise and support
 - 86% - Health care navigation and support



Discussion and feedback

Key insights

- Focus on the needs of Menlo Park residents, especially neighborhood residents
- Explore free / discounted programs for Menlo Park residents
- Focus on casual / drop in / family access
- Multi-generational services – children, teens, seniors
- Adaptive / all abilities
- Books, study, tutoring, literacy
- Resources and services – jobs, health/wellness, food security

D1 - PRESENTATION

MENLO PARK COMMUNITY CAMPUS PROGRAMMING ELEMENTS

Joint meeting – Library Commission and Parks and Recreation Commission – June 22, 2022





Overview

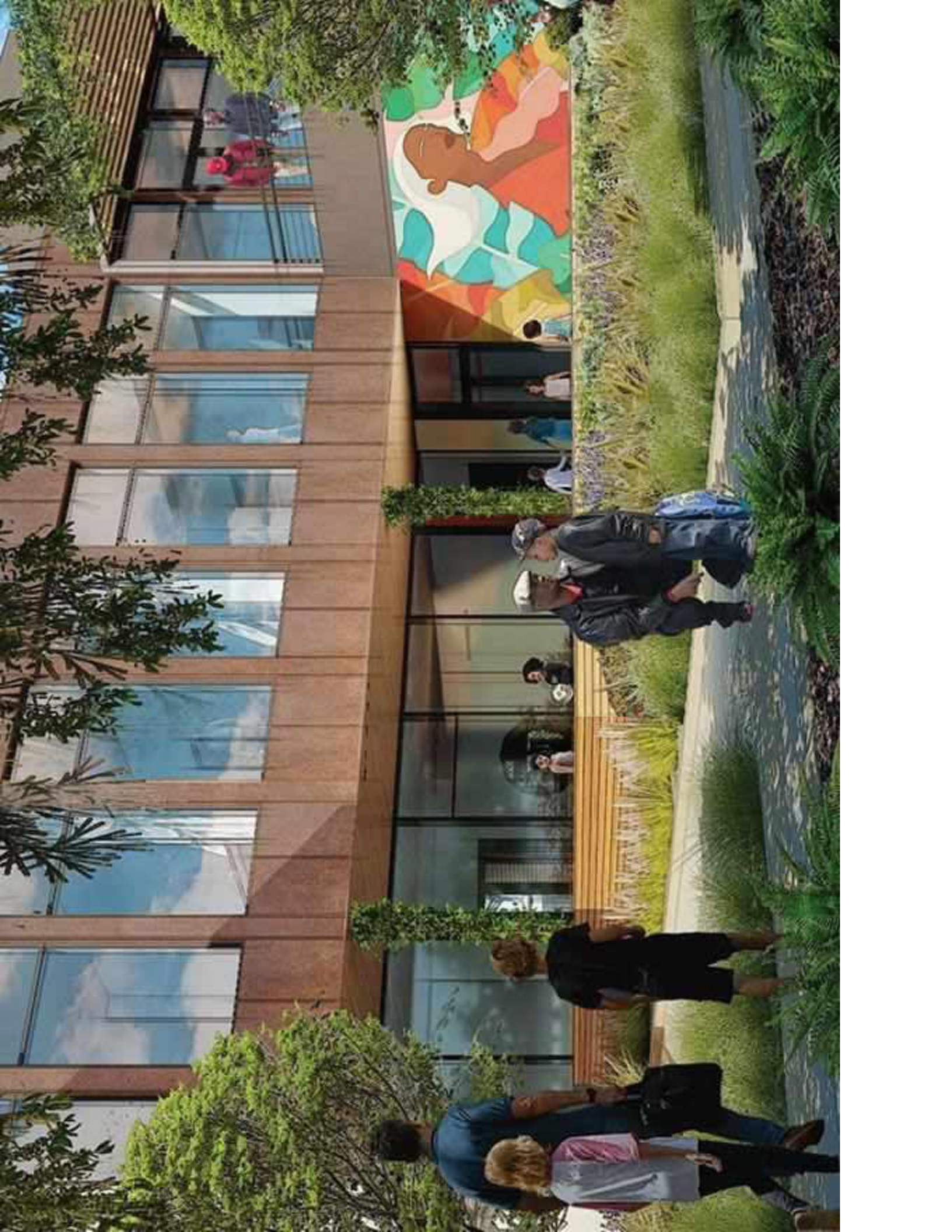
1. Guiding principles
2. MPCC Subcommittee and working group report
3. Menlo Park resident survey – preliminary impressions
4. Discussion and feedback

Guiding principles

The City of Menlo Park provides services and infrastructure that contribute to quality of life for all Menlo Park residents. In so doing, the City strives to balance the resource requirements of each area of the city in an equitable manner for all residents, in all neighborhoods of the City. The City of Menlo Park prioritizes social justice in decisions that affect residents' lives:

- The fair, just and equitable management of all institutions serving the public interest; by contract;
- The fair, just and equitable distribution of public services and implementation of policy; and
- The commitment to promote fairness, justice, and equity in the formation of public policy.

Excerpted from Cost Recovery Policy, City Council Procedure #CC-10-001, March 23, 2010



MPCC Subcommittee

- Mayor Nash and City Councilmember Taylor
- City Council created the MPCC Subcommittee to work with City and the community on the MPCC project.
- MPCC Subcommittee created a working group of Menlo Park residents to support and advise the subcommittee's work.
- May 24, 2022 – MPCC Subcommittee report to City Council
 - Recent activities
 - Summary of recent working group meetings
 - Working group ideas and suggestions

MPCC Subcommittee - working group

Working group members represent interests such as Bayfront neighborhoods, stakeholder constituencies, diverse user ages and abilities, and city commissions:

- Rachel Bickerstaff
- Rose Bickerstaff
- Sheryl Bims
- Mayrin Bunyagidj
- Jacqui Cebrian
- David Erhart
- Susan Erhart
- Israel Harris
- Jennifer Johnson
- Pam Jones
- Tim R.
- Michele Tate
- Tracie V.
- Shontelle W.



Working group – general feedback

- New, different, and fresh approach
- Desire to have a local hiring and procurement preference prioritized in Bayfront, Citywide, and any displaced residents and businesses
- Review the MPCCC programming and operations budget
- Start with a review of current and prior community center activities at Menlo Park as well as surrounding communities
- Outreach should include: people lacking technology access or skills, Spanish speakers
- Recognition and awards to people in community who created trust and dialogue

Working group – operational ideas

- Front desk providing city services, assistance, city information, Community Resources/Bulletin Board
- Medical Training for staff including CPR
- Attendant for athletic facilities to keep space clean and sanitary
- Roles and rules for public spaces – Library, Makerspace, etc.
 - Supervision of children, Safety standards, noise levels
 - Field Usage Policy
- Fee structure, scholarships
- Focus on Menlo Park residents and particularly local Bayfront community (as opposed to renting out to others for cost recovery)

Working group – programming ideas

Library and makerspace

- Story time
- Tutoring time
- Librarian help hours (learning library skills and systems, etc.)
- Host adult/child or adult/teen book clubs
- Teen space - teens play instruments or listen to music together
- Makerspace - large tables for workstations, 3D printer
 - Pottery class including kiln
 - Sewing classes including sewing machines
 - Woodshop

Working group – programming ideas

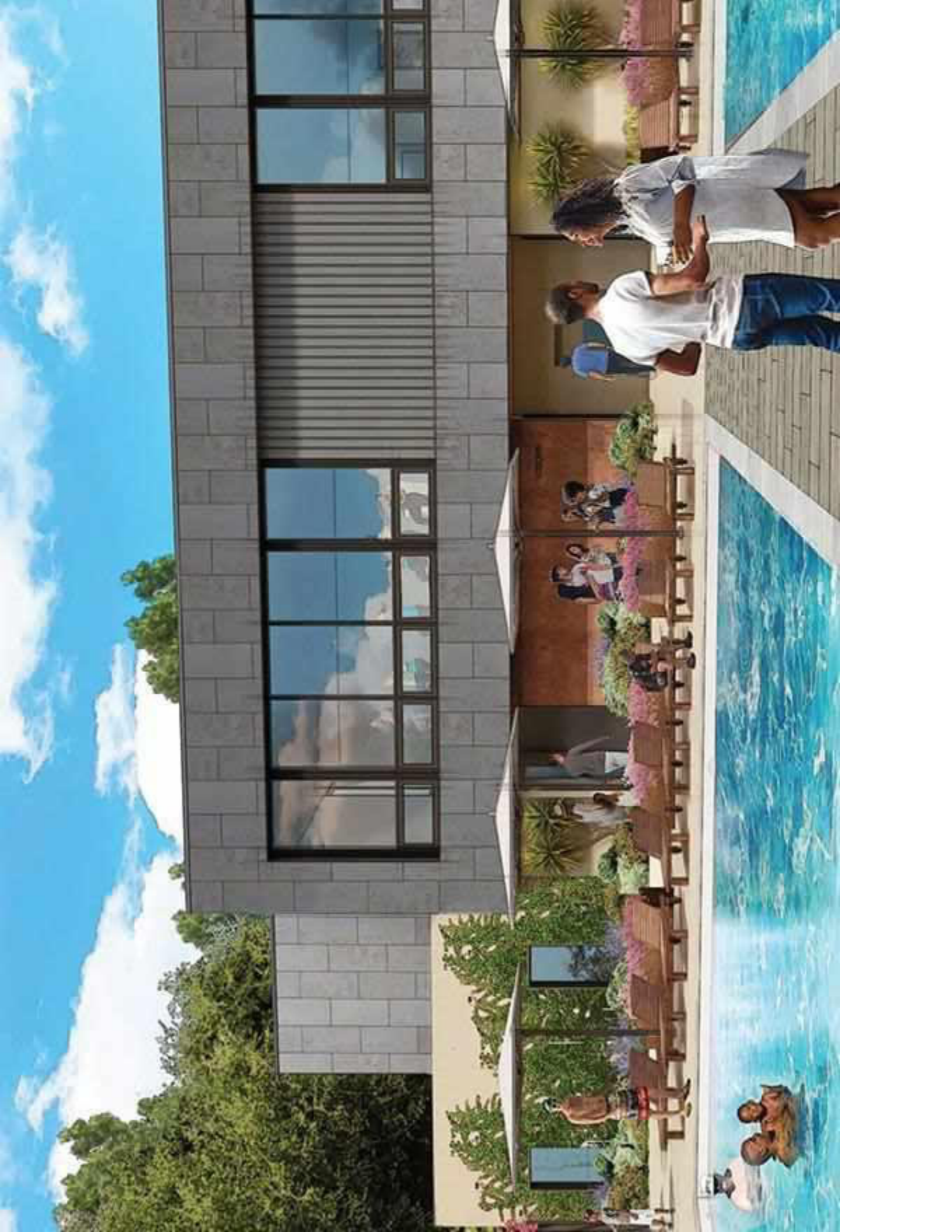
Athletic facility

- Strength training for women
- Strength/balance training for seniors
- Gymnastics classes for kids with special needs
- Fitness Center – safe, state of the art equipment, roomy
- Teen fitness offering inclusive of teens with disabilities
- Movement Studio – intentionally designed
 - Functional exercise with cardio

Working group – programming ideas

Aquatics / pools

- Adaptive swimming for people with disabilities
- Senior pool exercise class
- Lots of free swim time in the more heated pool with ramp



Working group – programming ideas

Educational opportunities

- Coding, Engineering, Science (ongoing classes)
- Health and Nutrition Classes for ALL
- Basic Life Skills - Budgeting, how to manage money, job seeking (resumes, interview skills, dress for success), social awareness
- College programming
- Driving school
- Computer lab

Working group – programming ideas

Educational opportunities (continued)

- Environmental education and impact - storyboards/classes based on MPCC sustainability
- Bike repair station/classes (example: Live In Peace organization)
- Cooking classes
- Teaching garden
- Adaptive recreation classes including mixed media art, karate, fitness, cooking, dance.

Next steps

A follow-up City Council discussion about the MPCC project, including the resident survey results, operational plan milestones update, and updates related to the MPCC project budget, is tentatively targeted for July 26.



%_su&e a.



Discussion and feedback

Key considerations

- Guiding principles
- Focus on needs of Menlo Park residents
- Working group - programming ideas
 - Library and makerspace
 - Athletic facility
 - Educational opportunities
 - Aquatics / pools
- Free / discounted programs for Menlo Park residents

Discussion and feedback

Commission feedback