

August 2024

## St. Raymonds Church

### Project Description

#### Purpose

The purpose of the project is to improve the usability and safety of the sanctuary outdoor areas as well as improve the connection between the inside of the chapel and the sanctuary. The entry to the chapel/sanctuary is not clearly defined. The outdoor improvements, along with a new curtainwall system, will make the entry sequence more apparent and easier to access. The improvements will also address the safety concerns of the uneven pavement at church's main entry on Santa Cruz Avenue. On each side of the sanctuary, small outdoor spaces with uneven pavement sections will be improved to provide safer space for smaller gatherings before and after services. On each side of the sanctuary, small outdoor spaces with uneven pavement sections will be improved to provide safer space for smaller gatherings before and after services. On each side of the sanctuary, small outdoor spaces will be improved for smaller gatherings before and after services. Currently, much of the paving is in disrepair

#### Scope of Work

The scope of work in our submittal includes improvements to the exterior areas at the front of the chapel area and along the sides of the sanctuary. New paving, landscaped areas with shrubs and trees will be added along with new signage. There will also be new bollard and pole lights to improve the visibility at night. The main entry glazing will be replaced with the addition of two sets of exterior doors. On the inside of the chapel space, most of the work is new interior finishes along with new glazing and doors to improve the connection between the chapel and sanctuary that allow for overflow space during large church events.

#### Architectural Style, Materials, Colors, and Construction Methods

The scope of the interior and exterior improvements will be in keeping with the existing architecture. The new curtain wall will match the existing windows of the sanctuary (dark brown). The interior improvements (lighting and finishes) will match the finishes in the sanctuary.

#### Basis for Site Layout

The design of the exterior site improvements has a formal arrangement to match the formality and symmetry of the chapel and sanctuary. A landscaped area with a new monument sign will be symmetrically placed in front of the chapel with two pathways flanking the entry sign. The two landscaped areas on either side of the sanctuary will also be symmetrical about the sanctuary and similar in nature. There are also two ADA accessible paths that lead to the chapel entries.

#### Existing and Proposed Uses

The existing and proposed uses will be the same. The purpose of the improvements is improve their existing operations and functions as a church and chapel. The ability to meet informally outdoors is hampered currently by the lack of seating and furnishes. The new improvements will help facilitate more informal gatherings outside the church.

#### Outreach to Neighboring Properties

The church plans to have an open house to present the improvement plans to their neighbors. Though, the improvements themselves will have no impact on the neighbors, the construction process may create some noise

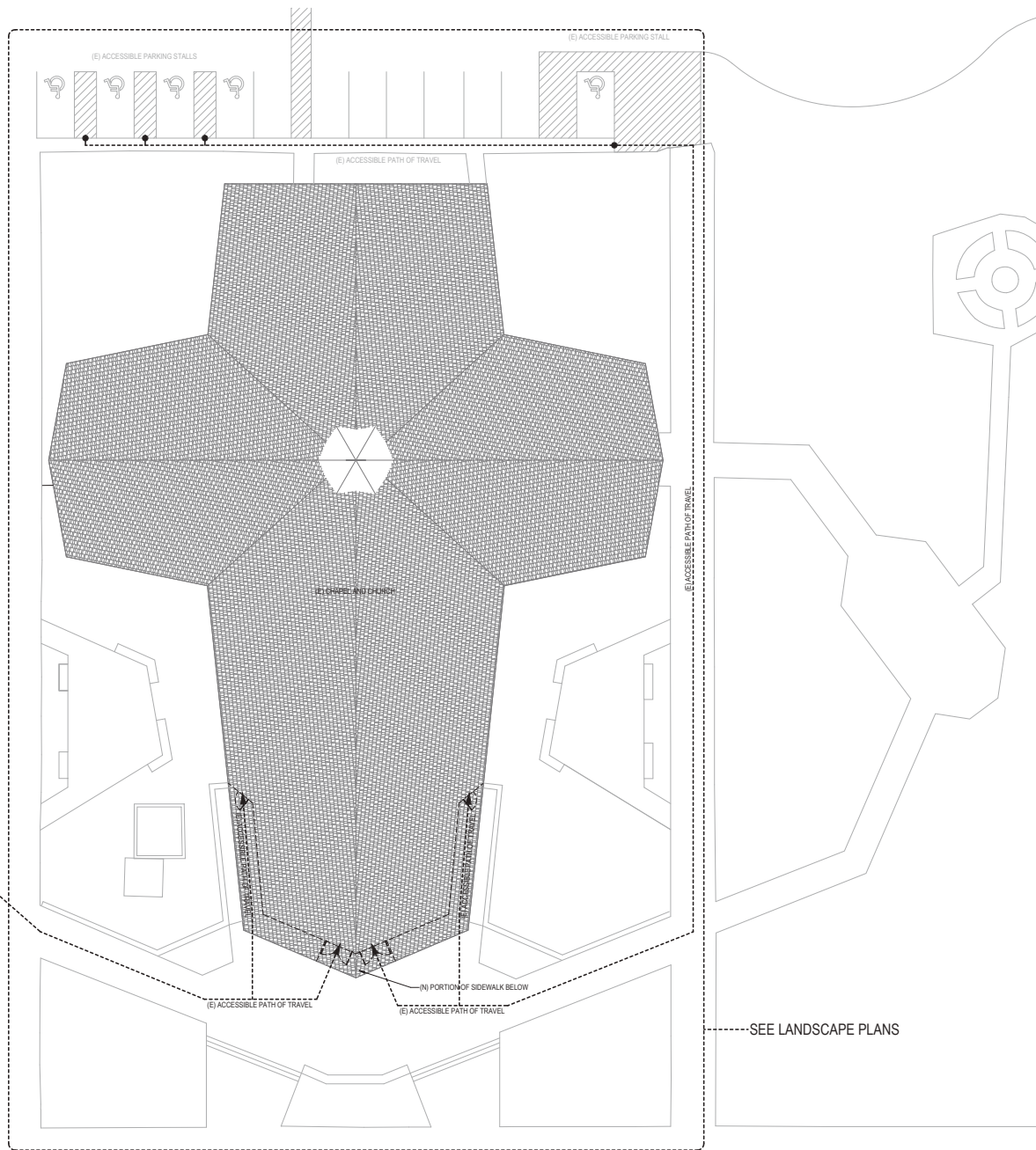


D

C

B

A



SANTA CRUZ AVE.

**RATCLIFF**

5856 Doyle Street  
 Emeryville, CA 94608  
 Tel 510 899 6400  
 www.ratcliffarch.com



ISSUE SCHEDULE	NO.	DATE

OSHPD STAMP (IF APPLIES):

KEY PLAN



ST. RAYMOND'S  
 CHURCH

1100 Santa Cruz Ave  
 Menlo Park, CA 94025

CHAPEL  
 IMPROVEMENTS

SHEET TITLE:

SITE PLAN

SCALE: 1" = 10'-0"  
 PROJECT NUMBER: 22425.00

SHEET NUMBER: **AS100**

SITE PLAN  
 1" = 10'-0"

1

2

3

4

5

6/20/2024 Permit Set





ISSUE SCHEDULE	NO.	DATE

OSHPD STAMP (IF APPLIES):

## ST. RAYMOND'S CHURCH

1100 Santa Cruz Ave  
Menlo Park, CA 94025

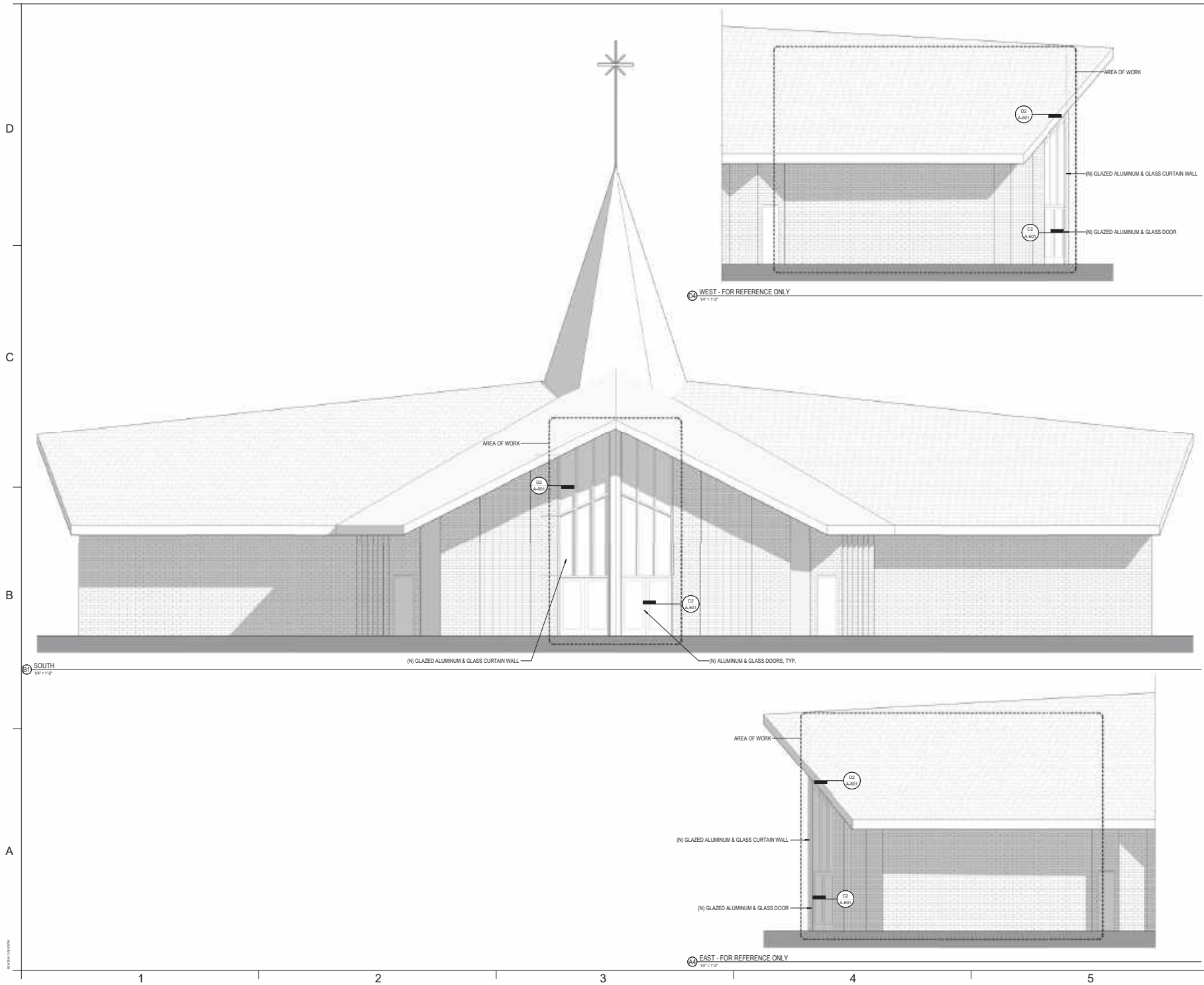
## CHAPEL IMPROVEMENTS

SHEET TITLE:  
**ELEVATIONS**

SCALE: 1/4" = 1'-0"  
PROJECT NUMBER: 22425.00

SHEET NUMBER: **A-200**

6/20/2024 Permit Set



WEST - FOR REFERENCE ONLY  
1/4" = 1'-0"

SOUTH  
1/4" = 1'-0"

EAST - FOR REFERENCE ONLY  
1/4" = 1'-0"

# RATCLIFF

5856 Doyle Street  
Emeryville, CA 94608  
Tel 510 899 6400  
www.ratcliffarch.com

**THE Guzzardo Partnership, INC.**  
Landscape Architects/Land Planners  
Pier 9, The Embarcadero, Suite 115  
San Francisco, CA 94111 | www.tgp-inc.com



ISSUE SCHEDULE	NO.	DATE
Permit Set		6/17/2024

OSHPD STAMP (IF APPLIES):

## ST. RAYMOND'S CHURCH

1100 Santa Cruz Ave  
Menlo Park, CA 94025

## CHAPEL IMPROVEMENTS

SHEET TITLE:

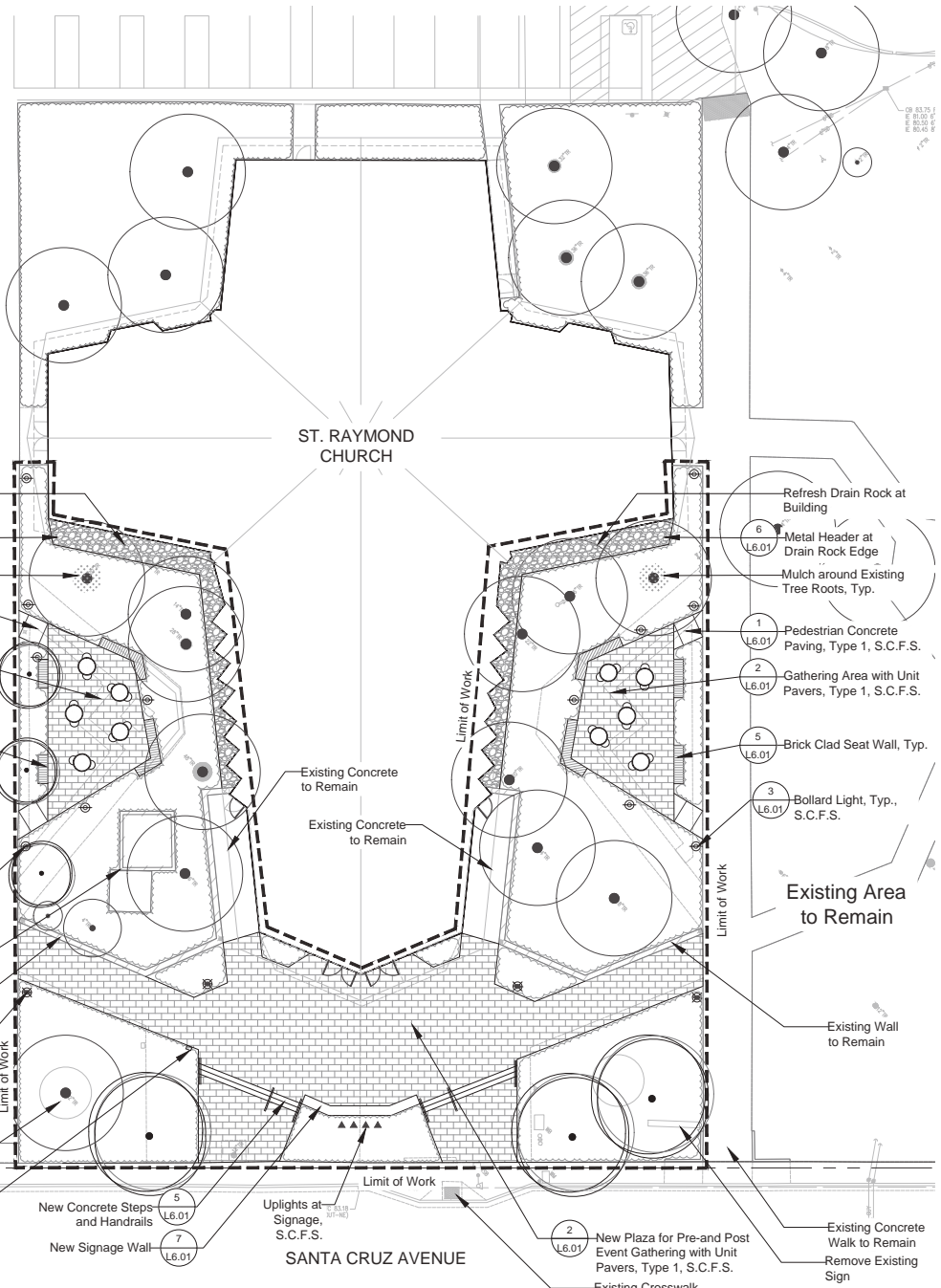
## LANDSCAPE LAYOUT PLAN

SCALE:  
PROJECT NUMBER: 22425.00

SHEET NUMBER: **L2.1**

### LAYOUT LEGEND

- Shrubs and Ground Cover Planting
- Pedestrian Unit Pavers
- Pedestrian Concrete Paving
- Fire Hydrant
- Utility Boxes
- Below grade utilities as noted
- Detail Number
- Sheet Number
- Property Line
- Center Line
- Phase Line
- Match Line
- Align
- Pedestrian Scale Pole Light
- Bollard Light
- Up Light
- Tree From Survey
- Expansion Joint
- See Architect's Drawings
- See Color and Finish Schedule



**NOTE:**  
Total new hardscape area: x,xxx SF



D  
C  
B  
A

1      2      3      4      5



ISSUE SCHEDULE	NO.	DATE
Permit Set		6/17/2024

OSHPD STAMP (IF APPLIES):

## ST. RAYMOND'S CHURCH

1100 Santa Cruz Ave  
Menlo Park, CA 94025

## CHAPEL IMPROVEMENTS

SHEET TITLE:

## PLANTING PLAN

SCALE:  
PROJECT NUMBER: 22425.00

SHEET NUMBER: **L4.1**

### PLANT PALETTE

TREES *Size: See Plans					
KEY	QTY	BOTANICAL NAME	COMMON NAME	COMMENT	WUCOL
CER OCC	3	<i>Cercis occidentalis</i>	Western Redbud		L
LAG TUS	2	<i>Lagerströmia 'Tusilagee'</i>	Crapp Myrtle		L
PRU YED	1	<i>Prunus x yedoensis</i>	Yoshino Cherry		M

SHRUBS					
KEY	SIZE	BOTANICAL NAME	COMMON NAME	SPACING	WUCOL
BUX	5 gal	<i>Buxus sempervirens</i>	Boxwood	30" o.c.	M
CAV	5 gal	<i>Callistemon viminalis 'Little John'</i>	Dwarf Bottlebrush	30" o.c.	L
LAV	5 gal	<i>Lavandula x l. 'Provence'</i>	French Lavender	30" o.c.	L
TLC	5 gal	<i>Linopetalum chinense 'Rubrum'</i>	Red fringe flower	36" o.c.	L
LS	5 gal	<i>Leucadendron 'Safari Sunset'</i>	Safari Sunset Conebush	60" o.c.	L
MAH	5 gal	<i>Mahonia repens</i>	Creeping Oregon Grape	36" o.c.	L
RC	5 gal	<i>Rhamnus californica 'Eva Case'</i>	Eva Case Coffeeberry	60" o.c.	L
ROS	5 gal	<i>Rosa x 'Noase'</i>	Flower Carpet Red Rose	30" o.c.	M
SAC	5 gal	<i>Salvia clevelandii 'Winnifred Gilmar'</i>	Cleveland Sage	36" o.c.	L

ACCENT SHRUBS, GRASSES AND PERENNIALS					
KEY	SIZE	BOTANICAL NAME	COMMON NAME	SPACING	WUCOL
AGA	5 gal	<i>Agave 'Blue Glow'</i>	Blue Glow Agave	36" o.c.	L
CAS	1 gal	<i>Calandrinia spectabilis</i>	Rock Purslane	18" o.c.	L
DLD	5 gal	<i>Dietes bicolor 'Lemon Drops'</i>	Fortnight Lily / Lemon Drops	30" o.c.	L
HEP	5 gal	<i>Hesperaloe parviflora</i>	Red Yucca	24" o.c.	VL
LIB	1 gal	<i>Libertia peregrinans</i>	Orange Libertia	18" o.c.	L
LOM	5 gal	<i>Lomandra longifolia 'Platinum Beauty'</i>	Variegated Dwarf Mat Rush	36" o.c.	L
NEP	1 gal	<i>Nephrolepis cordifolia</i>	Southern Sword Fern	24" o.c.	M

GROUNDCOVERS					
KEY	SIZE	BOTANICAL NAME	COMMON NAME	SPACING	WUCOL
BUL	1 gal	<i>Bulbine frutescens</i>	Orange Bulbine	18" o.c.	L
SEN	1 gal	<i>Senecio mandraliscae</i>	Blue Chalk Sticks	24" o.c.	L

