

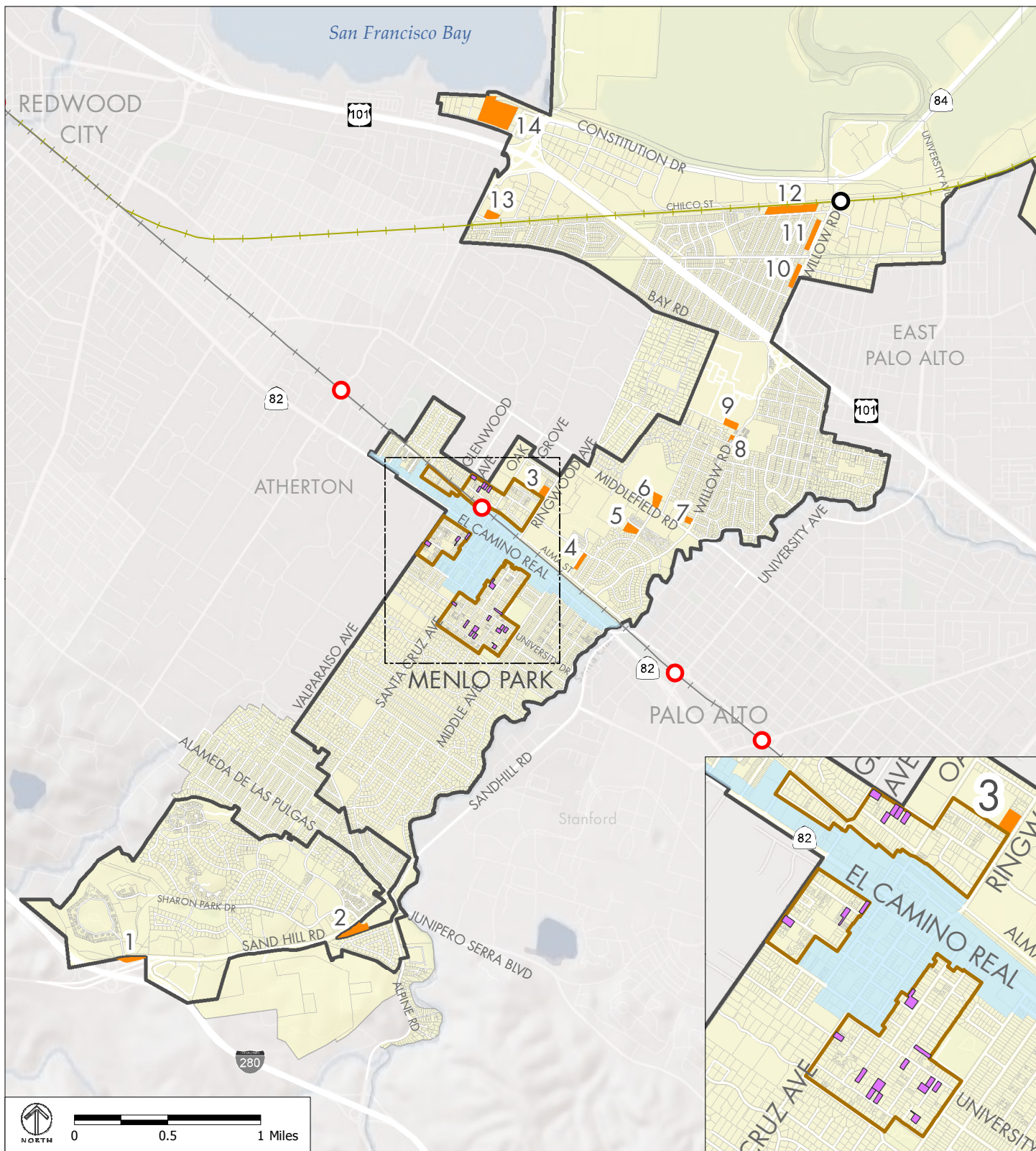
APPENDIX B:  
HOUSING SITE LOCATION MAP





**CITY OF MENLO PARK  
HOUSING ELEMENT UPDATE, GENERAL PLAN CONSISTENCY UPDATE, AND  
ZONING AMENDMENTS EA**

APPENDIX B



Source: City of Menlo Park; The Planning Center | DC&E, 2012; ESRI 2010; FHA 2002.

- Potential Station Location
- CalTrain Stations
- Dumbarton Rail Corridor
- Lots with Additional Housing Unit Potential
- Infill Areas around Downtown
- El Camino Real/Downtown Specific Plan
- Potential Sites to be Studied for Rezoning to Higher Density
- City Limits
- Sphere of Influence

**14 HOUSING AND INFILL SITES**

