

# ARCHAEOLOGICAL SURVEY REPORT

## 320 SHERIDAN DRIVE, MENLO PARK



### PREPARED BY:



MOLLY FIERER-DONALDSON  
ARCHAEOLOGICAL/HISTORICAL CONSULTANTS

PREPARED FOR: ALLIANT STRATEGIC DEVELOPMENT  
26050 MUREAU ROAD, SUITE 101  
CALABASAS, CA 91302

DECEMBER 2023

609 AILEEN STREET, OAKLAND, CA 94609 / [AHC-HERITAGE.COM](http://AHC-HERITAGE.COM)

## TABLE OF CONTENTS

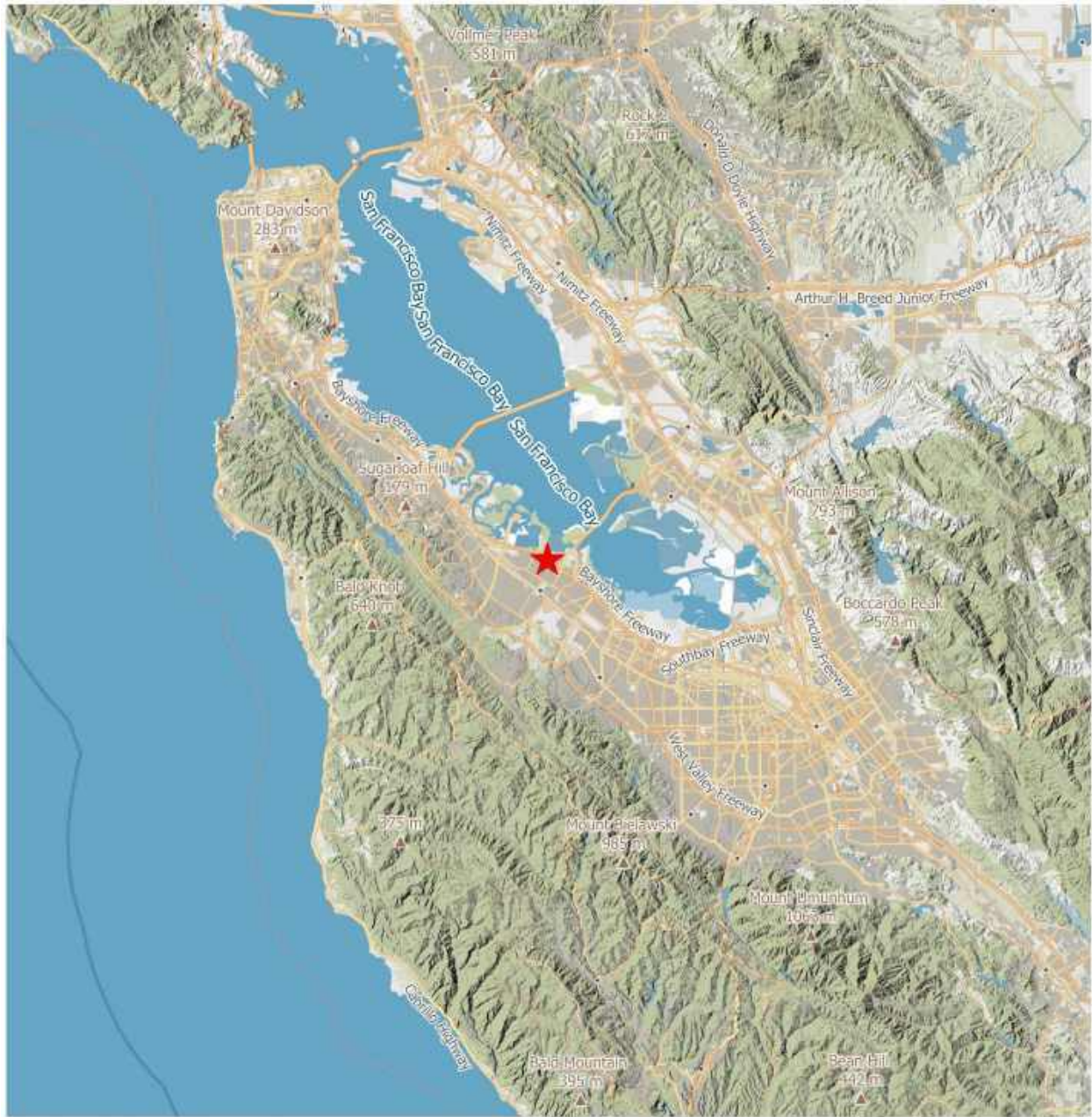
<b>INTRODUCTION AND SUMMARY OF FINDINGS</b> .....	<b>1</b>
<b>PREVIOUS STUDIES AND ARCHIVAL RESEARCH</b> .....	<b>5</b>
RECORD SEARCH RESULTS .....	5
SACRED LANDS FILE SEARCH .....	6
<b>BACKGROUND</b> .....	<b>7</b>
SETTING AND ENVIRONMENT .....	7
NATIVE AMERICAN SETTLEMENTS .....	7
EUROPEAN SETTLEMENTS .....	8
LAND USE IN THE PROJECT AREA .....	9
<b>ARCHAEOLOGICAL SURVEY</b> .....	<b>11</b>
METHODS AND CONSTRAINTS .....	11
RESULTS .....	11
<b>ARCHAEOLOGICAL SENSITIVITY</b> .....	<b>13</b>
NATIVE AMERICAN ARCHAEOLOGICAL SITE SENSITIVITY .....	13
HISTORIC-PERIOD SITE SENSITIVITY .....	13
<b>RECOMMENDATIONS</b> .....	<b>14</b>
<b>REFERENCES</b> .....	<b>15</b>
<b>APPENDIX 1: NWIC RECORD SEARCH</b>	
<b>APPENDIX 2: NAHC CORRESPONDENCE</b>	

## INTRODUCTION AND SUMMARY OF FINDINGS

A redevelopment project is proposed for 320 Sheridan Drive, Menlo Park (APN 055-303-110). The proposed project consists of an 85-unit, affordable multi-family residential apartment complex on an approximately 2.5-acre site. The project also includes a surface parking lot with 106 parking spaces and on-site amenities including two separate children's play areas, learning center, community room, and shaded sitting areas. The previous structure on the project area, an elementary school, has already been demolished.

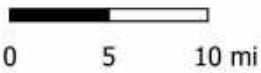
To ensure that the project does not affect historical resources or unique archaeological resources as defined in the CEQA Guidelines (14 CCR §15064.5), Archaeological/Historical Consultants reviewed archival sources and completed a pedestrian survey to assess the archaeological sensitivity of the project area.

The project area has a moderate sensitivity for buried Native American archaeological deposits and a low sensitivity for buried historic archaeological deposits. We, therefore, recommend construction crews receive cultural resources training to allow them to recognize the cultural resources they may encounter. If buried cultural materials are encountered during construction, work should stop in that area until an archaeologist can evaluate the nature and significance of the find.



**Project Location Map**

320 Sheridan Drive, Menlo Park



1:500,000


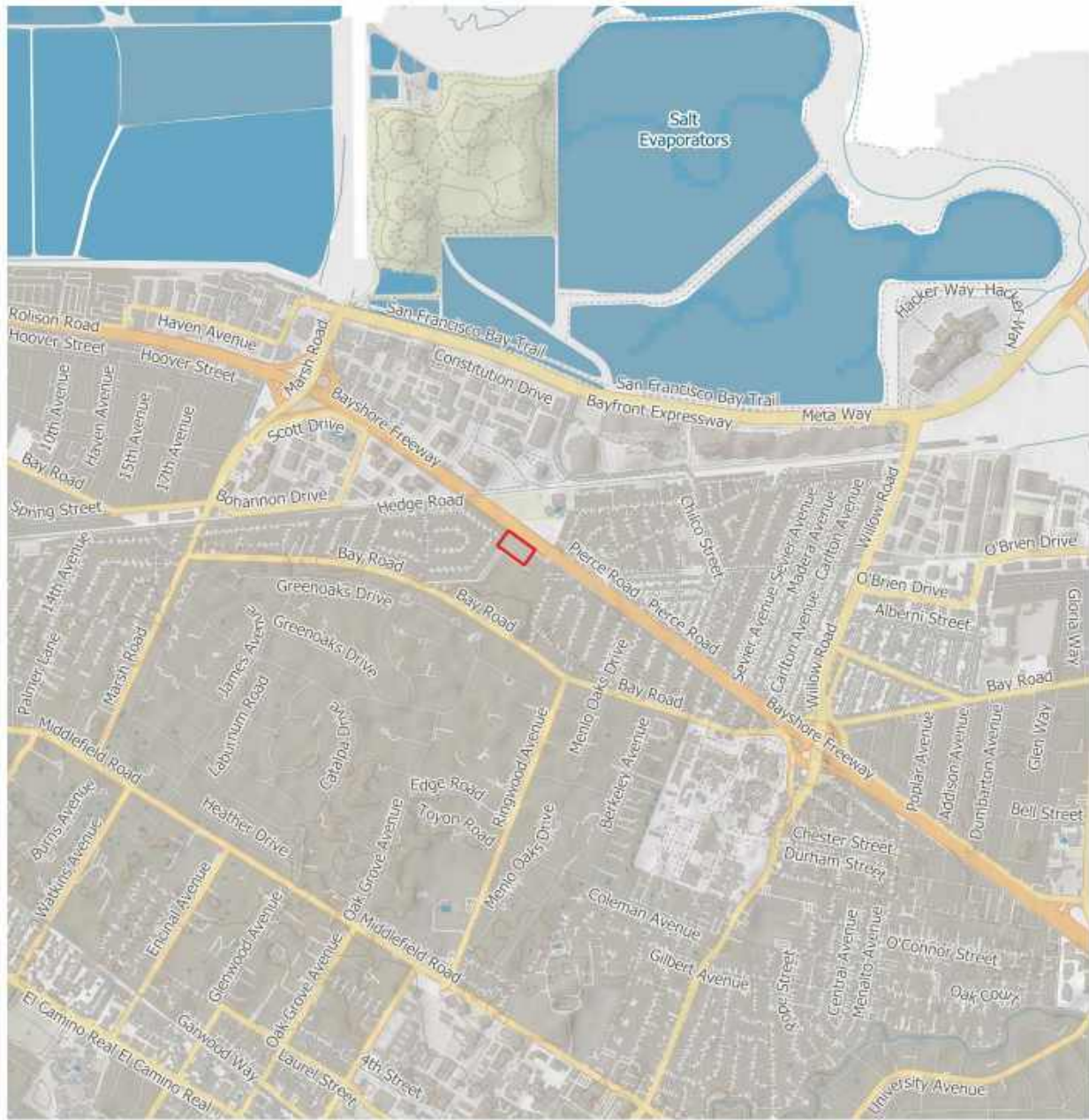
<b>Legend</b>
 Project Location

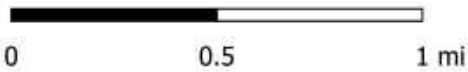
Figure 1: Project Location





### Project Vicinity Map

320 Sheridan Drive, Menlo Park

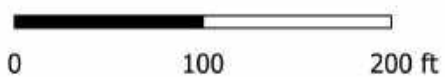


<b>Legend</b>
 Project Area

Figure 2: Project Vicinity



**Project Area Limits**  
320 Sheridan Drive, Menlo Park



1:1,000

<b>Legend</b>
 Project Area

Figure 3: Project Area Limits Map

## PREVIOUS STUDIES AND ARCHIVAL RESEARCH

### RECORD SEARCH RESULTS

A record search for the project area and a ¼-mile radius around it was completed on December 11, 2023 (NWIC File No. 23-0648). No cultural resources were identified within the project area. Within the search radius, two resources have been previously recorded:

- P-41-001515 is Flood Park, a 15-acre county park built by the WPA in 1937 with a baseball diamond, bleachers, children’s playground, wading “stream,” restrooms and park headquarters. NRHP status 5S1.
- P-41-002415 is a Native American archaeological site, featuring a concentration of very dark midden soils (with shell, mammal bone, charcoal, and stone tool debris) deposited within a pit feature approximately 1.65m in length east-west and 1.5 meters north-south. Radiocarbon dates from the shell returned from 970-1060 CE, placing it in the Middle/Late Transition Period. No other site attributes were recorded, and therefore, no boundaries were determined, but the authors suggested it could be all that remains of a previously unrecorded prehistoric habitation site (Garlinghouse 2015). The pit is 0.16 miles northwest of the project area on the north side of the Bayshore Freeway.

No previous studies have examined the project area, but two included land that was immediately adjacent (S-022178; S-049125). In 1999, Robert Cartier of Archaeological Resource Management performed an archival search and survey of the property immediately southwest of the project area. The survey of the 1.5-acre property at 260 Van Buren Avenue did not find any surface evidence of prehistoric resources but noted three previously recorded Native American sites within ½ mile (CA-SMA-242, CA-SMA-275, and P-41-0000438). They also recommended the evaluation of the 1940s motel on the property (S-022178). The second report, S-049125, was focused on the Bayshore Freeway/US 101 and passed just north-northeast of the project area. This archaeological survey report and extended Phase I study did not identify any resources within ¼ mile of the project area (Beck et al. 2017). Ten additional studies have examined locations outside the project area but within the ¼ mile search radius (Table 1).

Table 1: Reports within 1/4 mile of the project area

S#	Reference	Title	Resources
S-003021	Dietz 1976	An Archaeological Reconnaissance of the 100.6 Acre Raychem Corporation Properties in Menlo Park, California (letter report)	
S-006498	Clark et al. 1983	Archaeological Investigations at CA-SMA-242, the Johnson & Johnson "Bandaid Site", Menlo Park, San Mateo County, California.	41-000282
S-006508	Holman 1984	A Report of Further Auguring at the Johnson & Johnson Project Area, Menlo Park, California.	41-000282
S-007346	Offermann 1985	Negative Archaeological Survey Report, landscaping project along Routes 84 and 101 in San Mateo and Alameda Counties, 04-SM/Ala-101, 84, 04253-033231	
S-032106	Billat 2006	New Tower ("NT") Submission Packet, FCC Form 620, Flood Park Flagpole, SF-15880A	
S-036481	Whitaker et al. 2009	Archaeological Survey Report for the Dumbarton Rail Corridor Project, San Mateo and Alameda Counties, California	41-000086, 41-000160, 41-000244, 41-000282, 41-000303
S-036481a	Whitaker et al. 2012	Archaeological Survey Report for the Dumbarton Rail Corridor Project, San Mateo and Alameda Counties, California	
S-039469	Kaptain 2012	Archaeological Survey Report for the San Mateo County SMART Corridors Project, Segment III, Redwood City, Atherton, Menlo Park, East Palo Alto, and Palo Alto, San Mateo County and Santa Clara County, California; EA #4A9201; EFIS #0400001169; Caltrans District 4; SR 82 PM SM 0/4.8; SCL 24.1/26.4; SR 84 PM 24.6/28.7; US 101 PM 0.7/5.5; SR 109 PM 1.10/1.87; SR 114 PM 5.0/5.93	
S-040929	Basin Research 2013	Archaeological Data Recovery Report (SMA-83) (ADRR) and Final Archaeological Resources Report (FARR), San Francisco Public Utilities Commission, Water System Improvement Program, Bay Division Pipeline Reliability Upgrade Project, East Bay and Peninsula Bay Division Pipeline No. 5, Alameda and San Mateo Counties, California	41-000086, 41-000233, 41-000262, 41-000270, 41-000299, 41-000303, 41-002242, 41-002319
S-055858	Barrow 2020	Cultural Resources Study for the Flow Equalization and Resource Recovery Facility Levee Improvements and Bayfront Recycled Water Project, Menlo Park, San Mateo County, California	41-002651, 41-002837

Please see Appendix 1 for complete record search results.

## SACRED LANDS FILE SEARCH

On November 17, 2023, the Native American Heritage Commission (NAHC) completed a search of its Sacred Lands File for information about Native American sacred sites and tribal cultural resources in the project vicinity. The search was positive, and the NAHC recommended contacting tribes on their contact list for San Mateo County for additional information.

Please see Appendix 2 for search results and contact list.



## BACKGROUND

### SETTING AND ENVIRONMENT

The project area is a flat parcel located 18 feet above sea level and about 0.4 miles south of the historic-period bay shore, whose historic limit was at the line of SR-84 (Bayfront Expressway). In the early historic era, the habitat of the project area was likely wet meadow (SFEI 1998). Due to clayey soils with poor drainage, wet meadows could be flooded for days or weeks, leaving them treeless, except for scattered willow groves, an almost marsh-like meadow that was considered good for grazing by early European settlers (Beller et al. 2010: 27-28). The underlying soils are fine alluvium laid down in the Holocene era (Witter et al. 2006), and the nearest watercourses are San Francisquito Creek (2.5 miles southeast) and Redwood Creek (2.4 miles west). Today, the project area is located between the Bayshore Freeway, housing developments, and Flood Park.

### NATIVE AMERICAN SETTLEMENTS

Prior to 1770, the San Francisco Peninsula was inhabited by speakers of the Ohlone group of languages, which despite significant dialectical differences (Levy 1978), were likely mutually intelligible (Milliken 1995:26). Ohlone, which is closely related to the Miwok languages, is a branch of the Yok-Utian subfamily of the Penutian languages that are spoken in Central California and along the Pacific Coast as far as southeast Alaska. Penutian speakers likely entered central California from the northern Great Basin around 4000-4500 years ago and arrived in the San Francisco Bay Area about 1500 years ago, displacing speakers of Hokan languages (Golla 2007:74).

Ohlone society was organized in independent local tribes of 200-400 people living in several semi-permanent villages, controlling fixed territories averaging 10 to 12 miles in diameter (Milliken *et al.* 2007). Shoup and Milliken (1999:8) note that local tribes: “were clusters of unrelated family groups that formed cooperative communities for ceremonial festivals, for group harvesting efforts, and – most importantly – for interfamily conflict resolution.” Hereditary village leaders, who could be male or female, played an important role in conflict resolution, receiving guests, directing ceremonies, organizing food-gathering expeditions, and leading war parties but did not otherwise exercise direct authority (Levy 1978:487). Despite their autonomy, intermarriage between local tribes appears to have been frequent (Milliken 1995:22-24).

At the time of Spanish contact, the Puichon tribelet occupied the lower foothills and Bayshore between Menlo Park and Stevens Creek. The Puichon were the largest local tribe on the west side of San Francisco Bay, with 459 individuals baptized at local missions between 1777 and 1804 (96 at San Francisco and 353 at Santa Clara). The inferred population density of the Puichon was 6.3 to 7.8 per square mile, the highest in the Bay Area and a very high number for anywhere in prehistoric North America. The Puichon village of Ssipùtca on San Francisquito Creek is mentioned six times in Mission Records, though its exact location is unknown (Milliken 1995:252, Milliken et al. 2009:294, 313).

## EUROPEAN SETTLEMENTS

### EARLY EXPLORERS

The historic period near the project area began with the expeditions of Portolá (1769), Rivera y Moncada (1774), and Anza (1776). Portolá's expedition camped on the bay shore in Puichon territory from November 7 to 12, 1769, and they were received with hospitality by residents of three nearby villages. Rivera y Moncada likewise received a warm reception at a Puichon village on San Francisquito Creek (Milliken 1995:34, 38). Anza is believed to have camped on San Francisquito Creek in what is now Menlo Park and the route of his expedition followed, more or less, the original El Camino Real (now Middlefield Road; Hoover et al. 1990:369).

After the establishment of Mission San Francisco in 1776 and Mission Santa Clara in 1777, the lands and people of the San Francisco Peninsula came under the control of the church. Indians came into the missions through a mixture of choice, persuasion, and force. Missionized Indians received instruction in Christianity and were forced to work at agricultural tasks that must have appeared strange to them; more difficult was the loss of personal freedoms, physical brutality, and imposition of Catholic sexual mores (Milliken 1995:88). European diseases ran rampant, with death tolls reaching 8% per year, higher among women and children, and Mission livestock grazing began to degrade the local environment, impacting the availability of traditional food resources for those Native Americans who remained outside the Mission system; by 1810 traditional cultures were collapsing throughout coastal and central California (Milliken 1995:221).

During the mission period, most of Bayshore San Mateo County was used as grazing lands for livestock belonging to the missions. Several agricultural and ranching outposts were established in the 1780s and operated by Native American “neophytes,” often on or near the locations of village sites.

### RANCHO DE LAS PULGAS IN THE SPANISH AND MEXICAN PERIODS (1800-1848)

The governors of California began to award land grants to prominent civilians in the 1790s. The project area lies on Rancho de las Pulgas, which was the largest and oldest of these grants. A 1795 verbal grant to Jose Argüello, a former commander of the San Francisco Presidio, was confirmed to his heirs in 1820 (Beck and Haase 1974:30; Hoover *et al.* 1990:380). The 35,000-acre grant stretched from the Bay estuary to the Crystal Springs Reservoir Valley and from San Mateo Creek to the Santa Clara County line (Stanger 1938:40). It includes the present-day towns of San Mateo, Belmont, San Carlos, Redwood City, Atherton, and Menlo Park. The Argüello family was prominent in the government of California up to the American takeover and lived mostly in San Francisco and Monterey. For this reason, and because they had large landholdings elsewhere, few improvements were made to Las Pulgas beyond a few huts for shepherds (Hynding 1982:36). It is likely that the project area continued to be used as grazing land throughout the Mexican period.

### THE AMERICAN PERIOD (1849-1950)

The trickle of Anglo-American immigrants to California during the mid-1840s became a flood after the two key events in early 1848. These were the Treaty of Guadalupe Hidalgo, which ceded California to the United States, and John Marshall's discovery of gold on the South Fork of the American River. The subsequent gold rush of 1849 brought tens of thousands of people, mostly men, to the Bay Area.

Many who did not find success in the gold fields decided to appropriate what they saw as empty land on ranchos around the Bay. On Rancho de las Pulgas, for instance, at least twenty-three squatters were occupying land in 1853 (Hynding 1982:37). Mexican landowners such as the Argüellos were faced with a new legal system that took an average of seventeen years to resolve claims. During the long legal process, many landowners were forced to sell off portions of their land to pay legal fees.

The origins of Menlo Park also date to the middle of the 19<sup>th</sup> century. Dennis Oliver and D. C. McGlynn, his brother-in-law, platted a 1700-acre tract at Middle Avenue and El Camino Real in the mid-1850s, naming it Menlo Park in memory of their home Menlough, County Galway, Ireland. When the San Francisco-San Jose Railroad was completed in 1863, the nearby station was given the same name. The railroad's arrival led to the development of country estates in the area by wealthy San Franciscans and the incorporation of Menlo Park in 1874 (Hoover *et al.* 1990:379). In the last quarter of the 19<sup>th</sup> century, however, development in Menlo Park and adjoining towns was concentrated south of Bay Road, while the Bayshore areas remained largely undeveloped.

After 1900, transportation and resource extraction became important themes along the Menlo Park bayshore. Ravenswood Salt Works (later a division of Leslie Salt) expanded its activities north of the project area after 1910. A salt pond landscape defined by levees and evaporation ponds was created, supported by pipes, a pumphouse, and water control structures such as sluice gates. Salt extraction activity in the project vicinity peaked in the 1950s and ceased after the acquisition of the salt ponds by the US Fish and Wildlife Service (Speulda-Drews and Valentine 2017).

The project vicinity became a transportation corridor after 1910 when a subsidiary of the Southern Pacific Railroad constructed the Dumbarton railroad bridge. Hetch Hetchy water arrived to the Peninsula in 1925 after completing Bay Crossing Pipeline No. 1 in 1925, which passes one mile south of the project area (San Francisco PUC 2005). In addition, the Dumbarton Bridge was completed by 1927 (Kneese 1927) and was the first vehicular bridge crossing San Francisco Bay. The Dumbarton highway and rail bridges connected to the Bayfront Expressway (now US Route 101) and the Southern Pacific peninsula railroad line (now Caltrain), making the project vicinity an important point of connection for people and goods between Alameda and San Mateo Counties.

## LAND USE IN THE PROJECT AREA

By 1877, the project area was part of the plot that belonged to John Sullivan (1830-1880), who is recorded as a farmer in San Mateo County in the 1870 Census; however, at the time of his death in 1880 the family was living in San Francisco (Cloud 1877; US Census 1870, 1880).

By 1894, the project area was part of 214 acres owned by James Clair Flood (1826-1889) (Bromfield 1894). The “Silver King of Nevada” Flood had made a fortune investing in silver mining at the Comstock Lode Mines and continued to amass money in finance, helping to found the Bank of Nevada, a precursor to Wells Fargo; and in real estate, building grand buildings in San Francisco and Menlo Park and acquiring significant areas of bayshore and tidal marsh including the project area. At one time, he was said to be one of the richest men in California. After James’s death, his daughter Jennie inherited the Menlo Park Mansion, Linden Towers, and over 600 acres surrounding it.



*Figure 4: 1930 aerial photograph with the project area outlined in red (Fairchild Aerial Surveys 1930)*

Not wanting to maintain such a large property, she gave the land, including the project area, to the University of California, who continued to own the land through 1927 (Neuman 1909; Kneese 1927; Stanger 1963:113-114, 119). An elementary school named in honor of James Flood was built on the project area by 1953, but it had remained undeveloped before that time. The school building was closed in 2011 and has since been demolished (USGS 1953).



*Figure 5: 1965 aerial photograph with the project area indicated in red (Cartwright Aerial Services 1965)*



## ARCHAEOLOGICAL SURVEY

### METHODS AND CONSTRAINTS

Alexi Atteberry surveyed the project area at 320 Sheridan Drive on December 19, 2023. Mr. Atteberry holds a BA in archaeology and has 10 years of experience in California archaeology. The project area was surveyed in approximately 10-meter transects throughout. Because the survey area consists of paved and unpaved surfaces, soil exposures were periodically conducted with a hand trowel in the northwest, northeast, and central-east regions.



*Figure 6: clockwise from left: overview from northeast corner of project area, looking southwest; soil exposure in the northeast corner; overview from south boundary, looking north; soil exposure in the northwest region.*

### RESULTS

Ground visibility of unpaved surfaces was moderate due to foliage and wet, overgrown grasses in some regions. Observed soils throughout the project area varied between a very dark gray (Munsell 10YR 3/1) loam with approximately 25% rock inclusions in the northwest and central-east regions to a more dark grayish brown (Munsell 10YR 4/2) loam in the northeast, and finally a brown (Munsell 10YR 4/3) silty loam in the far northeast corner of the project area with increased rock inclusions of up to 30%.



*Figure 7: from left to right: overview from the southeast region and soil exposure in the central-east region.*

Modern refuse was observed throughout the entire project area, with higher concentrations near the railroad tracks and shoulders of the Bayshore Freeway. No cultural material over 50 years old was observed anywhere in the project area.

## ARCHAEOLOGICAL SENSITIVITY

### **NATIVE AMERICAN ARCHAEOLOGICAL SITE SENSITIVITY**

Archaeological sites are most often found in flat locations with access to a perennial source of fresh water. Soils deposited during the Holocene era (since 11,700 years ago), especially young alluvium from the last 2,000-3,000 years, are more likely to contain buried archaeological deposits. Native American sites are most often found within ½-mile of major and ¼-mile of minor watercourses and within 500 feet of shorelines.

The project is located on Holocene-era alluvial soils heavily modified by urban development, including filling (Witter et al. 2006). The project area is around 700 feet from the historic-era marsh boundaries, in an area that was likely wet meadow during the early historic period, and the nearest major watercourses are over 2 miles away making the location less desirable for habitation. One Native American archaeological site with midden and habitation debris has been recorded within ¼ mile of the project area; however, it only consisted of a 1.5-meter pit feature and no other elements could be found. The project area thus appears to have a moderate sensitivity for archaeological resources.

### **HISTORIC-PERIOD SITE SENSITIVITY**

Several factors can be used to infer an area's sensitivity for buried historic-period archaeological resources (Caltrans 2007). These include surface scatters of artifacts, documentary sources (historic maps, deeds, or photographs), standing buildings or structures that suggest patterns of land use (homes, barns, ponds, fences, industrial facilities), and ecological or landscape features (steep hills, bodies of water, wetlands).

Historical research did not identify any development on the project area prior to 1953. Before that, it was likely used intermittently for cattle grazing. Thus, the project area has a low sensitivity for buried historic-period archaeological deposits.

## RECOMMENDATIONS

The project area has a moderate sensitivity for Native American archaeological deposits and a low sensitivity for historic-period deposits. We, therefore, recommend construction crews receive cultural resources training to allow them to recognize the cultural resources they may encounter. If buried cultural materials are encountered during construction, work should stop in that area until an archaeologist can evaluate the nature and significance of the find.



## REFERENCES

Aero Services Corporation

1956 Flight DDB-1956, Frame 3r-106. Available at:  
[https://mil.library.ucsb.edu/apcatalog/report/report.php?filed\\_by=DDB-1956](https://mil.library.ucsb.edu/apcatalog/report/report.php?filed_by=DDB-1956), accessed  
December 4, 2023

Ancestry.com

2008 California, Voter Registrations, 1900-1968 [database online]. Provo, UT, USA: Ancestry.com  
Operations Inc.

Beck, Warren A. and Ynez D. Haase

1988 *Historical Atlas of California*. University of Oklahoma Press, Norman, OK.

Beller, Erin E., Micha N. Salomon, and Robin M. Grossinger

2010 *Historical Vegetation and Drainage Patterns of Western Santa Clara Valley: A technical memorandum  
describing landscape ecology in Lower Peninsula, West Valley, and Guadalupe Watershed Management  
Areas*. Report of SFEI's Historical Ecology Program. San Francisco Estuary Institute,  
Oakland, CA.

Bromfield, Davenport

1894 Official Map of San Mateo County, California, Compiled and Drawn by Davenport  
Bromfield, County Surveyor. On file, Earth Sciences and Map Library, University of  
California, Berkeley

California Department of Transportation (Caltrans)

2007 *A Historical Context and Archaeological Research Design for Agricultural Properties in California*.  
Division of Environmental Analysis, California Department of Transportation, Sacramento,  
California.

Cartwright Aerial Surveys

1963 Flight CAS-SM, Frame 4-29 Available at:  
[https://mil.library.ucsb.edu/apcatalog/report/report.php?filed\\_by=CAS-SM](https://mil.library.ucsb.edu/apcatalog/report/report.php?filed_by=CAS-SM), accessed  
December 4, 2023

Cloud, J. J.

1877 Official Map of the County of San Mateo, California. Drawn by Walter Montagu Kerr.  
Britton, Rey & Co. Lith., San Francisco, CA.

Crawford, K.A.

2015 DPR 523 Primary Record for P-41-002470, 3600 Haven Avenue, Redwood City. On file,  
NWIC.

H.S. Crocker Company

1901 Crocker-Langley San Francisco Directory for Year Commencing May 1901. Available at: <https://archive.org/details/crockerlangley1901sanfrich/page/8/mode/2up>, accessed December 7, 2023.

Fairchild Aerial Surveys

1930 Flight C-1025, Frame f-4. Available at: [https://mil.library.ucsb.edu/apcatalog/report/report.php?filed\\_by=C-1025](https://mil.library.ucsb.edu/apcatalog/report/report.php?filed_by=C-1025), accessed December 4, 2023

1941 Flight C-6660, Frame 361. Available at: [https://mil.library.ucsb.edu/apcatalog/report/report.php?filed\\_by=C-1025](https://mil.library.ucsb.edu/apcatalog/report/report.php?filed_by=C-1025), accessed December 4, 2023

Golla, Victor

2007 Linguistic prehistory. In Terry L. Jones and Kathryn A. Klar, eds., *California Prehistory: Colonization, Culture, and Complexity*. New York: AltaMira Press, pp. 71-82.

Hoover, Mildred Brooke, Hero Eugene Rensch, Ethel Grace Rensch, and William N. Abeloe.

1990 *Historic Spots in California*. 4th edition. Palo Alto: Stanford University Press.

Hynding, Alan

1982 *From Frontier to Suburb: The Story of the San Mateo Peninsula*. Star Publishing, Belmont, CA.

Kneese, George A.

1927 Official Map of San Mateo County, California, Compiled from Official Records and Surveys by George A. Kneese, County Surveyor. On file, Earth Sciences and Map Library, University of California, Berkeley.

Kozakavich, Stacy and Alexandra Merritt-Smith

2008 *A Cultural Resources Study for the San Mateo County SMART Corridors Project, San Mateo County, California*. LSA Associates, Inc. NWIC Report S-038684.

Levy, Richard

1978 Costanoan. In William C. Sturtevant, and Robert F. Heizer, eds., *Handbook of North American Indians*, Vol. 8 (California). Washington, DC: Smithsonian Institution.

Milliken, Randall

1995 *A Time of Little Choice: The Disintegration of Tribal Culture in the San Francisco Bay Area, 1769-1810*. Novato, CA: Ballena Press.

Milliken, Randall, Laurence Shoup, and Beverly Ortiz.

2009 *Oblone/Costanoan Indians of the San Francisco Peninsula and their Neighbors, Yesterday and Today*. San Francisco: National Park Service.

Milliken, Randall, Richard T. Fitzgerald, Mark G. Hylkema, Randy Groza, Tom Origer, David G. Bieling, Alan Leventhal, Randy S. Wiberg, Andrew Gottsfield, Donna Gillete, Viviana Bellifemine, Eric Strother, Robert Cartier, and David A. Fredrickson

2007 "Punctuated Culture Change in the San Francisco Bay Area." In Terry L. Jones, and Kathryn A. Klar, eds., *California Prehistory: Colonization, Culture, and Complexity*. New York: Altamira Press, pp. 99–124. New York: Altamira Press.

Neuman, J.V.

1909 Official Map of San Mateo County, California, Compiled and Drawn by J.V. Neuman, County Surveyor. On file, Earth Sciences and Map Library, University of California, Berkeley.

Prendergast, Thomas F.

1942 [2001] *Forgotten Pioneers: Irish Leaders in Early California*. Honolulu: University Press of the Pacific.

*San Francisco Call*

1900 Died. 19 May:13.

San Francisco PUC

2005 A History of the Municipal Water Department and Hetch Hetchy System. San Francisco: San Francisco Public Utilities Commission. Available at: <http://sfwater.org/Modules/ShowDocument.aspx?documentID=5224> [accessed September 3, 2015]

Shoup, Laurence H. and Randall T. Milliken

1999 *Inigo of Rancho Posolmi: The Life and Times of a Mission Indian*. Novato, CA: Ballena Press.

Spangler, B.

2011 "The Peninsula's Fastest Growing District". Available at: <http://friendlyhistorycorner.blogspot.com/2011/10/peninsulas-fastest-growing-district.html>

Speudla-Drews, Lou Ann and Nick Valentine

2014 DPR 523 Primary Record for P-41-002404, Pond S5 Pump House, Redwood City. On file, NWIC.

2017 DPR 523 District Record for P-41-002351, Ravenswood Salt Works Historic District. On file, NWIC.

Stanger, Frank M.

1938 *History of San Mateo County*. Cawston Publishing, San Mateo, CA.

USGS (United States Geological Survey)

1899 Palo Alto 15' Quadrangle

1941 Palo Alto 7.5' Quadrangle

1961 Palo Alto 7.5' Quadrangle

Western Historical Publishing

1892 *Master Hands in the Affairs of the Pacific Coast*. San Francisco: Western Historical and Publishing Co.

Wilson, Don S.

1960 *Official Map, County of San Mateo, State of California, Compiled from Official Records and Surveys by Don S. Wilson, County Engineer and Road Commissioner*. On file, Earth Sciences and Map Library, University of California, Berkeley

Witter, Robert C., Keith L. Knudsen, Janet M. Sowers, Carl M. Wentworth, Richard D. Kohler, and Carolyn E. Randolph

2006 *Maps of Quaternary Deposits and Liquefaction Susceptibility in the Central San Francisco Bay Region, California*. USGS Open-File Report 2006-1037.



## APPENDIX 1: NWIC RECORD SEARCH

CALIFORNIA  
HISTORICAL  
RESOURCES  
INFORMATION  
SYSTEM



ALAMEDA  
COLLISA  
CONTRA COSTA  
DEL NORTE

HUMBOLDT  
LAKE  
MARIN  
MENDOCINO  
MONTEREY  
NAPA  
SAN BENITO

SAN FRANCISCO  
SAN MATEO  
SANTA CLARA  
SANTA CRUZ  
SOLANO  
SONOMA  
YOLO

**Northwest Information Center**  
Sonoma State University  
1400 Valley House Drive, Suite 210  
Rohnert Park, California 94928-3609  
Tel: 707.588.8455  
nwic@sonoma.edu  
<https://nwic.sonoma.edu>

12/11/2023

NWIC File No.: 23-0648

Molly Fierer-Donaldson  
Archaeological/Historical Consultants  
609 Aileen Street  
Oakland, CA 96409

Re: 23-58 320 Sheridan Drive

The Northwest Information Center received your record search request for the project area referenced above, located on the Palo Alto USGS 7.5' quad(s). The following reflects the results of the records search for the project area and a ¼ mile radius:

Resources within project area:	P-41-001515
Resources within ¼ mile radius:	P-41-002415
Reports within project area:	S-022178; S-049125
Reports within ¼ mile radius:	S-003021; S-006498; S-006508; S-007346; S-032106; S-036481; S-039469; S-040929; S-055858

**Resource Database Printout (list):**

enclosed  not requested  nothing listed

**Resource Database Printout (details):**

enclosed  not requested  nothing listed

**Resource Digital Database Records:**

enclosed  not requested  nothing listed

**Report Database Printout (list):**

enclosed  not requested  nothing listed

**Report Database Printout (details):**

enclosed  not requested  nothing listed

**Report Digital Database Records:**

enclosed  not requested  nothing listed

**Resource Record Copies:**

enclosed  not requested  nothing listed

**Report Copies:**

enclosed  not requested  nothing listed

**OHP Built Environment Resources Directory:**

enclosed  not requested  nothing listed

**Archaeological Determinations of Eligibility:**

enclosed  not requested  nothing listed

**CA Inventory of Historic Resources (1976):**

enclosed  not requested  nothing listed

**Caltrans Bridge Survey:**

enclosed  not requested  nothing listed

**Ethnographic Information:**

enclosed  not requested  nothing listed

**Historical Literature:**

enclosed  not requested  nothing listed

**Historical Maps:**

enclosed  not requested  nothing listed

**Local Inventories:**

enclosed  not requested  nothing listed

**GLO and/or Rancho Plat Maps:**

enclosed  not requested  nothing listed

**Shipwreck Inventory:**

enclosed  not requested  nothing listed

**Soil Survey Maps:**

enclosed  not requested  nothing listed

Please forward a copy of any resulting reports from this project to the office as soon as possible. Due to the sensitive nature of archaeological site location data, we ask that you do not include resource location maps and resource location descriptions in your report if the report is for public distribution. If you have any questions regarding the results presented herein, please contact the office at the phone number listed above.

The provision of CHRIS Data via this records search response does not in any way constitute public disclosure of records otherwise exempt from disclosure under the California Public Records Act or any other law, including, but not limited to, records related to archeological site information maintained by or on behalf of, or in the possession of, the State of California, Department of Parks and Recreation, State Historic Preservation Officer, Office of Historic Preservation, or the State Historical Resources Commission.

Due to processing delays and other factors, not all of the historical resource reports and resource records that have been submitted to the Office of Historic Preservation are available via this records search. Additional information may be available through the federal, state, and local agencies that produced or paid for historical resource management work in the search area. Additionally, Native American tribes have historical resource information not in the CHRIS Inventory, and you should contact the California Native American Heritage Commission for information on local/regional tribal contacts.

Should you require any additional information for the above referenced project, reference the record search number listed above when making inquiries. Requests made after initial invoicing will result in the preparation of a separate invoice.

Thank you for using the California Historical Resources Information System (CHRIS).

Sincerely,

Justin Murazzo  
Researcher

# Resource Detail: P-41-001515

23-0648 :: 23-58 320 Sheridan Drive

---

## Identifying information

Primary No.: P-41-001515

Trinomial:

Name: Flood Park

Other IDs:	Type	Name
OHP PRN		4025-0108-0000
PHI		SPHI-SMA-032
OHP Property Numb		091175
Resource Name		Flood Park

Cross-refs:

## Attributes

Resource type: Building, Structure

Age: Historic

Information base: Survey

Attribute codes: HP25 (Amusement park); HP35 (New Deal Public Works Project)

Disclosure: Unrestricted

Collections: No

Accession no(s):

Facility:

## General notes

## Recording events

	Date	Recorder(s)	Affiliation	Notes
a	3/25/1986	Anna G. Eshoo	San Mateo County Board of Supervisors	PHI form
b	3/1/1990	L.Wickert	San Mateo Co. Hist. Assoc.	Menlo Park Historical Building Survey

## Associated reports

Report No.	Year	Title	Affiliation
S-048233	1986	Flood Park: Made by Hand	
S-056586	2022	Cultural Resource Assessment for the Intermountain Infrastructure Group 5G Project:A Portion of the Bay Road Segment, City of Menlo Park, San Mateo County, California	PaleoWest, LLC

## Location information

County: San Mateo

USGS quad(s): Palo Alto

Address: Address	City	Assessor's parcel no.	Zip code
Bay Road	Menlo Park		

PLSS:

UTMs:

## Management status

## Database record metadata

Date	User	Action taken
Entered: 4/1/2005	icrds	
Last modified: 11/18/2016	hagell	
IC actions: Date	User	Action taken
6/24/2002	AOOHP2	OHP Property file import
3/6/2002	AOOHP2	Primary number 41-001515 assigned.



## Resource Detail: P-41-001515

23-0648 :: 23-58 320 Sheridan Drive

---

11/1/2016	muchb	waiting to see what other material OHP might have (bm2016-11-01 16:31)
4/1/2005	jay	Appended records from discontinued ICRDS.
11/8/2016	muchb	4025-0108-0000 document received from the OHP and added as 'b'

*Record status:* Verified

# Resource Detail: P-41-002415

23-0648 :: 23-58 320 Sheridan Drive

---

## Identifying information

Primary No.: P-41-002415

Trinomial: CA-SMA-000425

Name: [none]

Other IDs:	Type	Name
	Resource Name	[none]

Cross-refs:

## Attributes

Resource type: Site

Age: Prehistoric

Information base: Survey, Surface collection, Testing, Excavation, Analysis

Attribute codes: AP02 (Lithic scatter); AP11 (Hearths/pits); AP15 (Habitation debris)

Disclosure: Not for publication

Collections: Yes

Accession no(s): unknown

Facility: unknown

## General notes

## Recording events

Date	Recorder(s)	Affiliation	Notes
a 8/4/2015	T. Garlinghouse	Albion Environmental, Inc.	

## Associated reports

## Location information

County: San Mateo

USGS quad(s): Palo Alto

Address: Address	City	Assessor's parcel no.	Zip code
151 Commonwealth Drive	Menlo Park		

PLSS:

UTMs: Zone 10 573226mE 4148145mN NAD83 (recording event a)

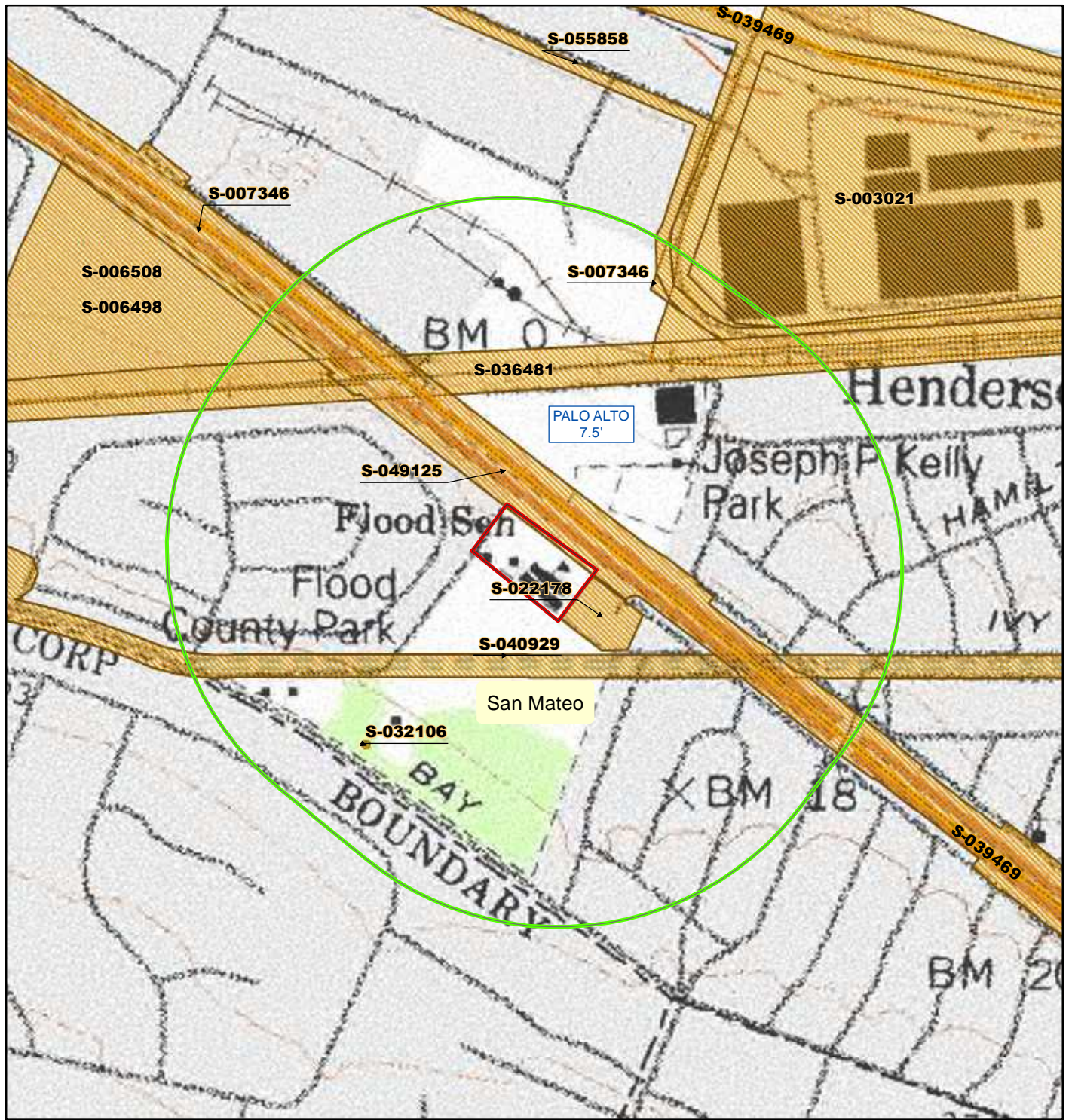
## Management status

## Database record metadata

Date	User	Action taken
Entered: 8/12/2015	mikulikc	
Last modified: 8/12/2015	mikulikc	
IC actions: Date	User	Action taken
8/12/2015	mikulikc	sent notification letter

Record status: Verified

Report Map  
23-58 320 Sheridan Drive

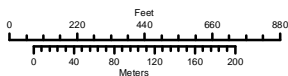


**Northwest Information Center**

File #23-0648 11 December 2023 J. Murazzo

May depict confidential cultural resource locations.

Do not distribute.



- |                     |                    |                 |
|---------------------|--------------------|-----------------|
| Project_location    | Restricted reports | Quad outlines   |
| Quarter_mile_buffer | Reports (points)   | County outlines |
|                     | Reports (lines)    |                 |
|                     | Reports (polygons) |                 |
|                     | Reports approx loc |                 |
|                     | Reports (CFMOU)    |                 |

# Report Detail: S-003021

23-0648 :: 23-58 320 Sheridan Drive

---

## Identifiers

Report No.: S-003021

Other IDs:	Type	Name
	Voided	E-19 SMA

Cross-refs:

## Citation information

Author(s): Stephen A. Dietz

Year: 1976 (Apr)

Title: An Archaeological Reconnaissance of the 100.6 Acre Raychem Corporation Properties in Menlo Park, California (letter report)

Affiliation: Archaeological Consulting and Research Services

No. pages:

No. maps:

Attributes: Archaeological, Field study

Inventory size: c 100.6 ac

Disclosure: Not for publication

Collections: No

## General notes

### Associated resources

No. resources: 0

Has informals: No

### Location information

County(ies): San Mateo

USGS quad(s): Palo Alto

Address:

PLSS:

### Database record metadata

Date	User
Entered: 4/7/2005	nwic-main
Last modified: 4/29/2016	mikulikc

IC actions:	Date	User	Action taken
	4/7/2005	jay	Appended records from NWICmain bibliographic database.
	4/27/2016	Neala	added collections

Record status: Verified



# Report Detail: S-006498

23-0648 :: 23-58 320 Sheridan Drive

---

## Identifiers

Report No.: S-006498

Other IDs:

Cross-refs: See also S-006508

## Citation information

Author(s): Matthew R. Clark, Miley Paul Holman, and Randy S. Wiberg

Year: 1983 (Dec)

Title: Archaeological Investigations at CA-SMA-242, the Johnson & Johnson "Bandaaid Site", Menlo Park, San Mateo County, California.

Affiliation: Holman & Associates

No. pages:

No. maps:

Attributes: Archaeological, Excavation, Field study

Inventory size:

Disclosure: Not for publication

Collections: Yes

## General notes

### Associated resources

Primary No.	Trinomial	Name
P-41-000282	CA-SMA-000242	Bandaaid Site

No. resources: 1

Has informals: No

### Location information

County(ies): San Mateo

USGS quad(s): Palo Alto

Address: Address	City	Assessor's parcel no.	Zip code
	Menlo Park		

PLSS:

### Database record metadata

Date	User
Entered: 4/7/2005	nwic-main
Last modified: 1/21/2020	hagell

IC actions: Date	User	Action taken
4/7/2005	jay	Appended records from NWICmain bibliographic database.
8/6/2015	hagell	edited database
4/28/2016	Neala	added city

Record status: Verified

# Report Detail: S-006508

23-0648 :: 23-58 320 Sheridan Drive

---

## Identifiers

Report No.: S-006508

Other IDs:

Cross-refs: See also S-006498

## Citation information

Author(s): Miley Paul Holman

Year: 1984 (Mar)

Title: A Report of Further Auguring at the Johnson & Johnson Project Area, Menlo Park, California.

Affiliation: Holman & Associates

No. pages:

No. maps:

Attributes: Archaeological, Excavation, Field study

Inventory size:

Disclosure: Not for publication

Collections: No

## General notes

There was no evidence of CA-SMA-242 (P-41-000282) within the areas tested.

## Associated resources

Primary No.	Trinomial	Name
P-41-000282	CA-SMA-000242	Bandaaid Site

No. resources: 1

Has informals: No

## Location information

County(ies): San Mateo

USGS quad(s): Palo Alto

Address: Address

City

Assessor's parcel no.

Zip code

Menlo Park

PLSS:

## Database record metadata

Date

User

Entered: 4/7/2005

nwic-main

Last modified: 4/28/2016

Neala

IC actions: Date

User

Action taken

4/7/2005

jay

Appended records from NWICmain bibliographic database.

4/28/2016

Neala

added city

Record status: Verified

# Report Detail: S-007346

23-0648 :: 23-58 320 Sheridan Drive

---

## Identifiers

Report No.: S-007346

Other IDs:	Type	Name
	Caltrans	04253-033231

Cross-refs:

## Citation information

Author(s): Janis K. Offermann

Year: 1985 (Mar)

Title: Negative Archaeological Survey Report, landscaping project along Routes 84 and 101 in San Mateo and Alameda Counties, 04-SM/Ala-101, 84, 04253-033231

Affiliation: California Department of Transportation

No. pages:

No. maps:

Attributes: Archaeological, Field study

Inventory size:

Disclosure: Not for publication

Collections: No

## General notes

CA-SMA-160 was recorded just outside of the project area. Original map is skewed

## Associated resources

No. resources: 0

Has informals: No

## Location information

County(ies): Alameda, San Mateo

USGS quad(s): Newark, Palo Alto

Address:

PLSS:

## Database record metadata

	Date	User	
Entered:	4/7/2005	nwic-main	
Last modified:	4/24/2019	barnettb	
IC actions:	Date	User	Action taken
	4/7/2005	jay	Appended records from NWICmain bibliographic database.
	4/28/2016	Neala	added month & collections
	10/29/2018	hagell	edited title
	4/24/2019	barnettb	PDF Verified. Oversized pages have been scanned and added to PDF
Record status:	Verified		

# Report Detail: S-022178

23-0648 :: 23-58 320 Sheridan Drive

---

## Identifiers

Report No.: S-022178

Other IDs:

Cross-refs:

## Citation information

Author(s): Robert Cartier

Year: 1999 (Feb)

Title: Cultural Resource Evaluation for 1.5 Acres of Land at 260 Van Buren Avenue in the City of Menlo Park, County of San Mateo

Affiliation: Archaeological Resource Management

No. pages:

No. maps:

Attributes: Archaeological, Field study

Inventory size: c 2 ac

Disclosure: Not for publication

Collections: No

## General notes

### Associated resources

No. resources: 0

Has informals: No

### Location information

County(ies): San Mateo

USGS quad(s): Palo Alto

Address: Address

260 Van Buren Avenue

City

Menlo Park

Assessor's parcel no.

Zip code

PLSS:

### Database record metadata

Date

User

Entered: 4/7/2005

nwic-main

Last modified: 4/28/2016

mikulikc

IC actions: Date

User

Action taken

4/7/2005

jay

Appended records from NWICmain bibliographic database.

Record status: Verified



# Report Detail: S-032106

23-0648 :: 23-58 320 Sheridan Drive

---

## Identifiers

Report No.: S-032106

Other IDs:

Cross-refs:

## Citation information

Author(s): Scott Billat

Year: 2006 (Jul)

Title: New Tower ("NT") Submission Packet, FCC Form 620, Flood Park Flagpole, SF-15880A

Affiliation: EarthTouch, Inc.

No. pages:

No. maps:

Attributes: Archaeological, Field study

Inventory size: c 0.25 ac

Disclosure: Not for publication

Collections: No

## General notes

### Associated resources

No. resources: 0

Has informals: No

### Location information

County(ies): San Mateo

USGS quad(s): Palo Alto

Address: Address  
215 Bay Road

City  
Menlo Park

Assessor's parcel no.

Zip code

PLSS:

### Database record metadata

Date	User	Action taken
Entered: 10/26/2006	jill	
Last modified: 11/1/2016	hagell	
IC actions: Date	User	Action taken
11/1/2016	hagell	edited affiliation

Record status: Verified

# Report Detail: S-036481

23-0648 :: 23-58 320 Sheridan Drive

---

## Identifiers

Report No.: S-036481

Other IDs:	Type	Name
Voided		S-39604

Cross-refs:

## Citation information

Author(s): Adrian Whitaker, Phil Kaijankowski, Jack Meyer, and Brian Byrd

Year: 2009 (May)

Title: Archaeological Survey Report for the Dumbarton Rail Corridor Project, San Mateo and Alameda Counties, California

Affiliation: Far Western Anthropological Research Group, Inc.

No. pages:

No. maps:

Attributes: Archaeological, Field study

Inventory size: c. 20.5 li mi

Disclosure: Not for publication

Collections: No

---

Sub-desig.: a

Author(s): Adrian R. Whitaker, Philip Kaijankoski, Jack Meyer, Brian F. Byrd, and Sharon A. Waechter

Year: 2012 (Apr)

Title: Archaeological Survey Report for the Dumbarton Rail Corridor Project, San Mateo and Alameda Counties, California

Affiliation: Far Western Anthropological Research Group, Inc.

Report type(s): Archaeological, Field study

Inventory size:

No. pages:

Disclosure: Not for publication

Collections: No

PDF Pages: 166-341

## General notes

### Associated resources

Primary No.	Trinomial	Name
P-41-000086	CA-SMA-000083	Fair Oaks Site
P-41-000160	CA-SMA-000160	Hiller Mound
P-41-000244	CA-SMA-000248	Tarlton Site
P-41-000282	CA-SMA-000242	Bandaid Site
P-41-000303	CA-SMA-000305	Athlone Way

No. resources: 5

Has informals: Yes

### Location information

County(ies): Alameda, San Mateo

USGS quad(s): Hayward, Mountain View, Newark, Niles, Palo Alto, Redwood Point

Address:

PLSS:

### Database record metadata

Date	User	Action taken
Entered: 1/15/2010	hagell	
Last modified: 5/2/2019	vickeryn	
IC actions: Date	User	Action taken
2/25/2019	moored	added additional citation 'a' (Whitaker et al, 2012)
2/26/2019	rinerg	add quads: 'Redwood Point', 'Hayward'

**Report Detail: S-036481**

23-0648 :: 23-58 320 Sheridan Drive

---

*Record status:* Verified

# Report Detail: S-039469

23-0648 :: 23-58 320 Sheridan Drive

---

## Identifiers

Report No.: S-039469

Other IDs:	Type	Name
	Caltrans	EA #4A9201
	Caltrans	EFIS #0400001169

Cross-refs:

## Citation information

Author(s): Neal Kaptain

Year: 2012 (Mar)

Title: Historical Resources Compliance Report for the San Mateo County SMART Corridors Project, Segment III, Redwood City, Atherton, Menlo Park, East Palo Alto, and Palo Alto, San Mateo County & Santa Clara County, California; EA #4A9201; EFIS #0400001169, Caltrans District 4; SR 82 PM SM 0/4.8, SCL 24.1/26.4; SR 84 PM 24.6/28.7; US 101 PM 0.7/5.5; SR 109 PM 1.10/1.87; SR 114 PM 5.0/5.93

Affiliation: LSA Associates, Inc.

No. pages:

No. maps:

Attributes: Archaeological, Architectural/historical, Evaluation, Field study

Inventory size:

Disclosure: Not for publication

Collections: No

---

Sub-desig.: a

Author(s): Neal Kaptain

Year: 2012 (Mar)

Title: Archaeological Survey Report for the San Mateo County SMART Corridors Project, Segment III, Redwood City, Atherton, Menlo Park, East Palo Alto, and Palo Alto, San Mateo County and Santa Clara County, California; EA #4A9201; EFIS #0400001169; Caltrans District 4; SR 82 PM SM 0/4.8; SCL 24.1/26.4; SR 84 PM 24.6/28.7; US 101 PM 0.7/5.5; SR 109 PM 1.10/1.87; SR 114 PM 5.0/5.93

Affiliation: LSA Associates, Inc.

Report type(s): Archaeological, Field study

Inventory size:

No. pages:

Disclosure: Not for publication

Collections: No

PDF Pages: 51-101

---

Sub-desig.: b

Author(s): Neal Kaptain

Year: 2012 (Mar)

Title: Post-Review Discovery and Monitoring Plan for the San Mateo County SMART Corridors Project, Segment III, Redwood City, Atherton, Menlo Park, East Palo Alto, and Palo Alto, San Mateo County and Santa Clara County, California; EA #4A9201; EFIS #0400001169, Caltrans District 4; SR 82 PM SM 0/4.8; SCL 24.1/26.4; SR 84 PM 24.6/28.7; US 101 PM 0.7/5.5; SR 109 PM 1.10/1.87; SR 114 PM 5.0/5.93

Affiliation: LSA Associates, Inc.

Report type(s): Archaeological, Management/planning

Inventory size:

No. pages:

Disclosure: Not for publication

Collections: No

PDF Pages: 102-127

## General notes

### Associated resources

Primary No.	Trinomial	Name
P-41-000299	CA-SMA-000297	Four Lions

---



## Report Detail: S-039469

23-0648 :: 23-58 320 Sheridan Drive

---

P-41-002291	Ravenswood Avenue Shell Scatt
P-41-002292	Willow Road Shell Scatter
P-43-002626	El Camino Real Shell Scatter
P-44-000457	SCC01A; Vincente Castro Hous

No. resources: 5

Has informals: No

### Location information

County(ies): San Mateo, Santa Clara

USGS quad(s): Palo Alto

Address:

PLSS:

### Database record metadata

	<i>Date</i>	<i>User</i>	
Entered:	10/5/2012	bailey1	
Last modified:	5/11/2016	neala	
IC actions:	<i>Date</i>	<i>User</i>	<i>Action taken</i>
	5/11/2016	neala	removed page/map count; added PDF page # to addt'l citations
Record status:	Verified		

# Report Detail: S-040929

23-0648 :: 23-58 320 Sheridan Drive

---

## Identifiers

Report No.: S-040929

Other IDs:

Cross-refs:

## Citation information

Author(s):

Year: 2013 (Apr)

Title: Archaeological Data Recovery Report (SMA-83) (ADRR) and Final Archaeological Resources Report (FARR), San Francisco Public Utilities Commission, Water System Improvement Program, Bay Division Pipeline Reliability Upgrade Project, East Bay and Peninsula Bay Division Pipeline No. 5, Alameda and San Mateo Counties, California

Affiliation: Basin Research Associates, Inc.

No. pages:

No. maps:

Attributes: Archaeological, Excavation, Field study, Monitoring

Inventory size:

Disclosure: Not for publication

Collections: Yes

## General notes

### Associated resources

Primary No.	Trinomial	Name
P-41-000086	CA-SMA-000083	Fair Oaks Site
P-41-000233	CA-SMA-000235	[none]
P-41-000262	CA-SMA-000266	Hess Road
P-41-000270	CA-SMA-000275	Flood Park
P-41-000299	CA-SMA-000297	Four Lions
P-41-000303	CA-SMA-000305	Athlone Way
P-41-002242	CA-SMA-000394	Indian Mounds; BDPL#1P
P-41-002319		Bay Tunnel (Ravenwood) SFPU

No. resources: 8

Has informals: No

## Location information

County(ies): Alameda, San Mateo

USGS quad(s): Newark, Niles, Palo Alto, Woodside

Address:

PLSS:

## Database record metadata

Date	User	Action taken
Entered: 6/24/2013	neala	
Last modified: 5/11/2016	neala	
IC actions: Date	User	Action taken
1/4/2016	paganob	Author not submitted
5/11/2016	neala	removed page/map count

Record status: Verified

## Report Detail: S-049125

23-0648 :: 23-58 320 Sheridan Drive

---

### Identifiers

Report No.: S-049125

Other IDs:	Type	Name
	Caltrans	EA 04-1J560
	Caltrans	E-FIS 0413000206
	OHP PRN	FHWA_2017_0508_001

Cross-refs:

### Citation information

Author(s): Michael Meloy and Kathleen Kubal

Year: 2017 (Apr)

Title: Historic Property Survey Report for the US 101 Managed Lanes Project, EA 04-1J560

Affiliation: California Department of Transportation, District 4; AECOM

No. pages:

No. maps:

Attributes: Archaeological, Architectural/historical, Management/planning, Other research

Inventory size: c 22 li mi

Disclosure: Not for publication

Collections: No

---

Sub-desig.: a

Author(s): Michael Meloy

Year: 2017 (Apr)

Title: Historic Resources Evaluation Report for the US 101 Managed Lanes Project, EA 04-1J560

Affiliation: California Department of Transportation, District 4

Report type(s): Architectural/historical, Field study

Inventory size:

No. pages:

Disclosure: Not for publication

Collections: No

PDF Pages: 26-160

---

Sub-desig.: b

Author(s): Karin G. Beck, Kathleen Kubal, and Jay Rehor

Year: 2017 (Apr)

Title: Archaeological Survey Report and Extended Phase I Study, US 101 High-Occupancy Vehicle/Express (Managed) Lanes Project, San Francisco, San Mateo, and Santa Clara Counties, California, EA 04-1J5600

Affiliation: AECOM

Report type(s): Archaeological, Excavation, Field study

Inventory size:

No. pages:

Disclosure: Not for publication

Collections: No

PDF Pages: 161-405

# Report Detail: S-049125

23-0648 :: 23-58 320 Sheridan Drive

---

*Sub-desig.:* c

*Author(s):* Julianne Polanco

*Year:* 2017 (Jun)

*Title:* FHWA\_2017\_0508\_001, Determinations of Eligibility for the Proposed Creation of Approximately 22 Miles of Managed Lanes along United States Highway 101, San Mateo County, CA

*Affiliation:* California Office of Historic Preservation

*Report type(s):* OHP Correspondence

*Inventory size:*

*No. pages:*

*Disclosure:* Not for publication

*Collections:* No

*PDF Pages:* 406-407

## General notes

The APE spans San Mateo and Santa Clara counties.

## Associated resources

<i>Primary No.</i>	<i>Trinomial</i>	<i>Name</i>
P-41-000039	CA-SMA-000035	Nelson 374
P-41-000045	CA-SMA-000041	Nelson 380
P-41-000047	CA-SMA-000043	Nelson 382
P-41-000273	CA-SMA-000321	Hamilton #2; San Mateo Shellmo
P-41-000321	CA-SMA-000344	East Palo Alto 1
P-41-002619		035-023-210
P-41-002620		033-193-190
P-41-002621		033-127-010
P-41-002622		033-073-250
P-41-002623		033-034-080
P-41-002624		029-314-190
P-41-002625		029-314-080
P-41-002626		029-194-080
P-41-002627		029-194-070
P-41-002628		029-194-040
P-41-002629		029-191-110
P-41-002630		029-185-140
P-41-002631		029-165-010
P-41-002632		029-083-070
P-41-002633		029-083-060
P-41-002634		029-082-140
P-41-002635		029-082-130
P-41-002636		029-081-130
P-41-002637		026-251-150
P-41-002638		026-251-130
P-41-002639		026-251-070
P-41-002640		026-251-050/026-251-060

*No. resources:* 27

*Has informals:* No

## Location information

*County(ies):* San Mateo, Santa Clara

*USGS quad(s):* Montara Mtn, Mountain View, Palo Alto, Redwood Point, San Francisco South, San Mateo

<i>Address:</i> Address	<i>City</i>	<i>Assessor's parcel no.</i>	<i>Zip code</i>
US Highway 101			

*PLSS:*

# Report Detail: S-049125

23-0648 :: 23-58 320 Sheridan Drive

---

## Database record metadata

<i>Date</i>	<i>User</i>	
<i>Entered:</i> 7/6/2017	Richterl	
<i>Last modified:</i> 3/9/2021	hagell	
<i>IC actions: Date</i>	<i>User</i>	<i>Action taken</i>
7/6/2017	Richterl	additional citation (a) created, partial print out
7/6/2017	Richterl	additional citation (b) created, partial print out
1/18/2018	vickeryn	Added additional citation "c" Shapefiles
7/13/2018	murazzo	Shapefile converted to report polygon
9/24/2018	hagell	edited titles
3/9/2021	hagell	added inventory size
<i>Record status:</i> Verified		

# Report Detail: S-055858

23-0648 :: 23-58 320 Sheridan Drive

---

## Identifiers

Report No.: S-055858

Other IDs:	Type	Name
	Submitter	TOA #: 2020-050

Cross-refs: See also S-056897

## Citation information

Author(s): Eileen Barrow

Year: 2020 (Nov)

Title: Cultural Resources Study for the Flow Equalization and Resource Recovery Facility Levee Improvements and Bayfront Recycled Water Project, Menlo Park, San Mateo County, California

Affiliation: Tom Origer & Associates

No. pages:

No. maps:

Attributes: Archaeological, Architectural/historical, Field study

Inventory size:

Disclosure: Not for publication

Collections: No

---

Sub-desig.: a

Author(s): Ward Hill and Denise Bradley

Year: 2020 (Nov)

Title: Historic Resources Evaluation Report: West Bay Sanitary District Flow Equalization and Resource Recovery Facility, 1700 Marsh Road, Menlo Park, San Mateo County, CA

Affiliation:

Report type(s): Archaeological, Architectural/historical, Field study

Inventory size:

No. pages:

Disclosure: Not for publication

Collections: No

PDF Pages: 79-168

## General notes

### Associated resources

Primary No.	Trinomial	Name
P-41-002651		MPEQ-Site-002
P-41-002837		

No. resources: 2

Has informals: No

### Location information

County(ies): San Mateo

USGS quad(s): Palo Alto

Address:	Address	City	Assessor's parcel no.	Zip code
	1700 Marsh Rd	Menlo Park		94025

PLSS:

### Database record metadata

Date	User
------	------

Entered: 4/26/2022	VickeryN
--------------------	----------

Last modified: 11/16/2023	rinerg
---------------------------	--------

IC actions:	Date	User	Action taken
-------------	------	------	--------------

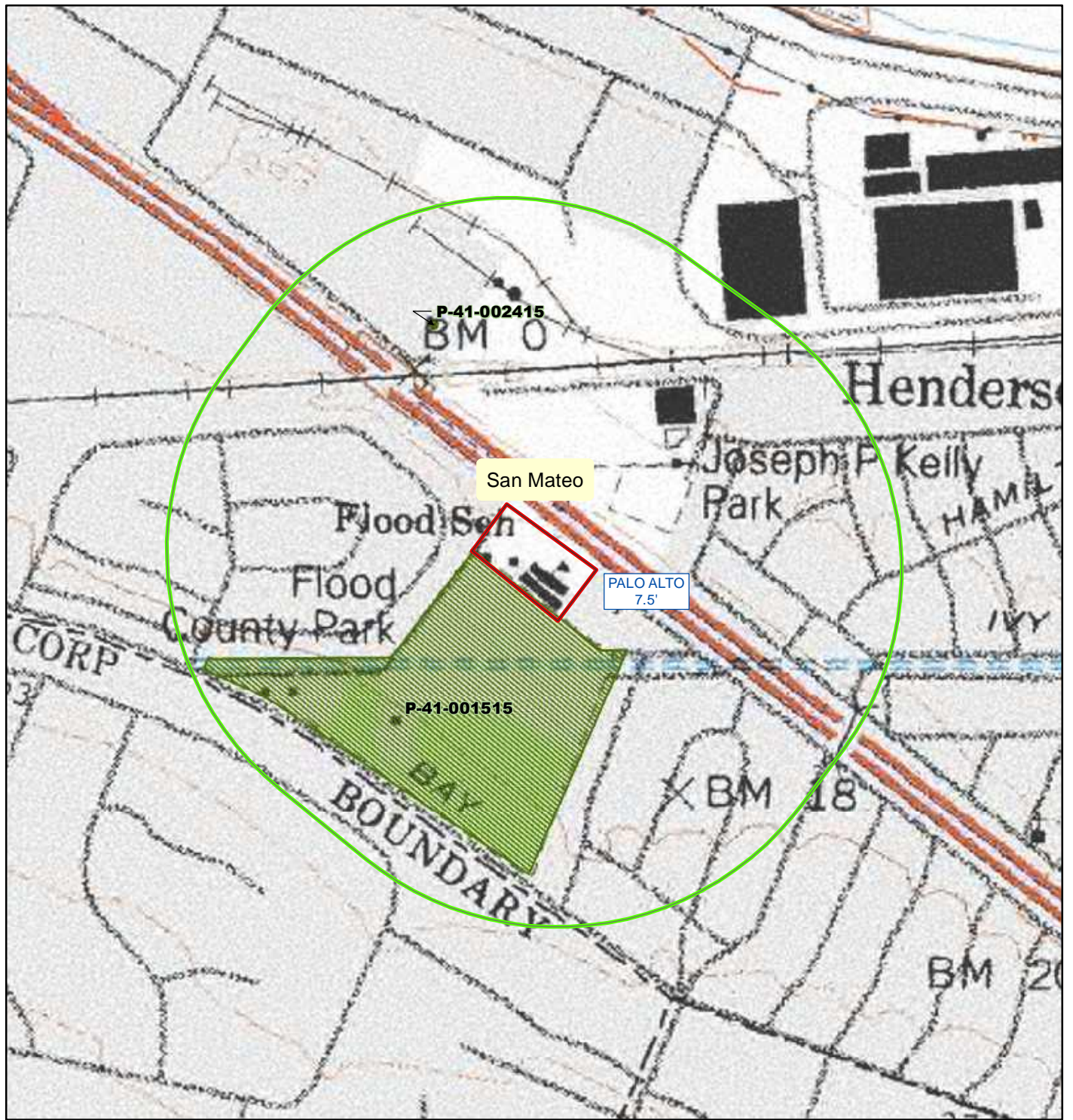
	10/26/2023	vickeryn	Added additional citation 'a'. No affiliation submitted.
--	------------	----------	--

Record status: Verified

---



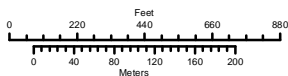
Resource Map  
23-58 320 Sheridan Drive



**Northwest Information Center**

File #23-0648 11 December 2023 J. Murazzo

May depict confidential cultural resource locations.  
Do not distribute.



- |                     |                      |                 |
|---------------------|----------------------|-----------------|
| Project_location    | Restricted resources | Quad outlines   |
| Quarter_mile_buffer | Resources (points)   | County outlines |
|                     | Resources (lines)    |                 |
|                     | Resources (polygons) |                 |
|                     | Resources approx loc |                 |
|                     | Resource districts   |                 |

## APPENDIX 2: NAHC CORRESPONDENCE

## NATIVE AMERICAN HERITAGE COMMISSION

November 17, 2023

Molly Fierer-Donaldson  
Archaeological/Historical Consultants

Via Email to: [molly.fierer@ahc-heritage.com](mailto:molly.fierer@ahc-heritage.com)

**Re: 23-58 320 Sheridan Drive Project, San Mateo County**

To Whom It May Concern:

A record search of the Native American Heritage Commission (NAHC) Sacred Lands File (SLF) was completed for the information submitted for the above referenced project. The results were positive. Please contact the tribes on the attached list for information. Please note that tribes do not always record their sacred sites in the SLF, nor are they required to do so. A SLF search is not a substitute for consultation with tribes that are traditionally and culturally affiliated with a project's geographic area. Other sources of cultural resources should also be contacted for information regarding known and recorded sites, such as the appropriate regional California Historical Research Information System (CHRIS) archaeological Information Center for the presence of recorded archaeological sites.

Attached is a list of Native American tribes who may also have knowledge of cultural resources in the project area. This list should provide a starting place in locating areas of potential adverse impact within the proposed project area. Please contact all of those listed; if they cannot supply information, they may recommend others with specific knowledge. By contacting all those listed, your organization will be better able to respond to claims of failure to consult with the appropriate tribe. If a response has not been received within two weeks of notification, the Commission requests that you follow-up with a telephone call or email to ensure that the project information has been received.

If you receive notification of change of addresses and phone numbers from tribes, please notify the NAHC. With your assistance, we can assure that our lists contain current information.

If you have any questions or need additional information, please contact me at my email address: [Cody.Campagne@nahc.ca.gov](mailto:Cody.Campagne@nahc.ca.gov).

Sincerely,



Cody Campagne  
Cultural Resources Analyst

Attachment



CHAIRPERSON  
**Reginald Pagaling**  
Chumash

VICE-CHAIRPERSON  
**Buffy McQuillen**  
Yokayo Pomo, Yuki,  
Nomlaki

SECRETARY  
**Sara Dutschke**  
Miwok

PARLIAMENTARIAN  
**Wayne Nelson**  
Luiseño

COMMISSIONER  
**Isaac Bojorquez**  
Ohlone-Costanoan

COMMISSIONER  
**Stanley Rodriguez**  
Kumeyaay

COMMISSIONER  
**Laurena Bolden**  
Serrano

COMMISSIONER  
**Reid Milanovich**  
Cahuilla

COMMISSIONER  
**Vacant**

EXECUTIVE SECRETARY  
**Raymond C. Hitchcock**  
Miwok, Nisenan

**NAHC HEADQUARTERS**  
1550 Harbor Boulevard  
Suite 100  
West Sacramento,  
California 95691  
(916) 373-3710  
[nahc@nahc.ca.gov](mailto:nahc@nahc.ca.gov)  
NAHC.ca.gov

**Native American Heritage Commission  
Native American Contact List  
San Mateo County  
11/17/2023**

<b>Tribe Name</b>	<b>Contact Person</b>	<b>Contact Address</b>	<b>Phone #</b>	<b>Email Address</b>
Amah Mutsun Tribal Band of Mission San Juan Bautista	Irene Zwielerin, Chairperson	3030 Soda Bay Road Lakeport, CA, 95453	(650) 851-7489	amahmutsuntribal@gmail.com
Costanoan Rumsen Carmel Tribe	Desiree Munoz, Tribal Liaison		(909) 491-8254	ohlonesisters@gmail.com
Costanoan Rumsen Carmel Tribe	Carla Munoz, Tribal Council	604 W Fernleaf Ave Pomona, CA, 91766	(415) 690-3110	carlamarieohlone@gmail.com
Indian Canyon Mutsun Band of Costanoan	Ann Marie Sayers, Chairperson	P.O. Box 28 Hollister, CA, 95024	(831) 637-4238	ams@indiancanyon.org
Indian Canyon Mutsun Band of Costanoan	Kanyon Sayers-Roods, MLD Contact	1615 Pearson Court San Jose, CA, 95122	(408) 673-0626	kanyon@kanyonconsulting.com
Muwekma Ohlone Indian Tribe of the SF Bay Area	Monica Arellano, Vice Chairwoman	20885 Redwood Road, Ste 232 Castro Valley, CA, 94546	(408) 205-9714	monicavarellano@gmail.com
Tamien Nation	Lillian Camarena, Secretary	336 Percy Street Madera, CA, 93638	(559) 363-5914	Lcamarena@tamien.org
Tamien Nation	Quirina Luna Geary, Chairperson	PO Box 8053 San Jose, CA, 95155	(707) 295-4011	qgeary@tamien.org
Tamien Nation	Johnathan Wasaka Costillas, THPO	10721 Pingree Road Clearlake Oaks, CA, 94523	(925) 336-5359	thpo@tamien.org
The Ohlone Indian Tribe	Andrew Galvan, Chairperson	P.O. Box 3388 Fremont, CA, 94539	(510) 882-0527	chochenyo@AOL.com
The Ohlone Indian Tribe	Vincent Medina, Cultural Leader	17365 Via Del Rey San Lorenzo, CA, 94580	(510) 610-7587	vincent.d.medina@gmail.com
The Ohlone Indian Tribe	Desiree Vigil, THPO	259 Winwood Avenue Pacifica, CA, 94044	(650) 290-0245	dirwin0368@yahoo.com
Wuksachi Indian Tribe/Eshom Valley Band	Kenneth Woodrow, Chairperson	1179 Rock Haven Ct. Salinas, CA, 93906	(831) 443-9702	kwood8934@aol.com

This list is current only as of the date of this document. Distribution of this list does not relieve any person of statutory responsibility as defined in Section 7050.5 of the Health and Safety Code, Section 5097.94 of the Public Resource Section 5097.98 of the Public Resources Code.

This list is only applicable for contacting local Native Americans with regard to cultural resources assessment for the proposed 23-58 320 Sheridan Drive Project, San Mateo County.