



# BELLE HAVEN COMMUNITY CAMPUS

## BELLE HAVEN COMMUNITY CAMPUS

a healthy, safe place to learn, play, exercise, socialize, and thrive


The Belle Haven Community Campus was made possible through the generous support of Meta Platforms, Inc., City of Menlo Park taxpayers, and Belle Haven neighborhood residents who conceived of and advocated for a new multigenerational community campus. Friends of Menlo Park Library, the Maria S. Hoffman Trust, and Menlo Park Library Foundation generously donated additional financial support to provide furniture, equipment, books and media to equip the new campus.



## ABOUT THE CAMPUS

---

The City of Menlo Park proudly welcomed residents to the grand opening of the Belle Haven Community Campus (BHCC) on Saturday, May 18, 2024. The BHCC is a 37,000 square-foot multiservice campus that includes Belle Haven Library, Belle Haven Pool, Belle Haven Youth Center, Menlo Park Senior Center, and Onetta Harris Community Center. The new campus features a public gymnasium, fitness center, movement studio, makerspace, and event hall as well as indoor and outdoor gathering spaces. The project preserved mature redwood trees and incorporates drought-tolerant, native plantings on the campus grounds adjacent to Joseph B. Kelly Park. Design and construction of the BHCC took only four years from concept to completion, and is the result of an innovative partnership between Menlo Park community members, the City of Menlo Park, and Meta Platforms, Inc. The new facility is owned and operated by the City of Menlo Park.



“ The top priority for this project was to build a new community space that will improve the quality of life for residents in the Belle Haven neighborhood and the rest of Menlo Park. A beautiful campus — it is a jewel nestled in a neighborhood, I like to call the treasure triangle. ”

— **Mayor Cecilia Taylor**



## ENVIRONMENTALLY SUSTAINABLE

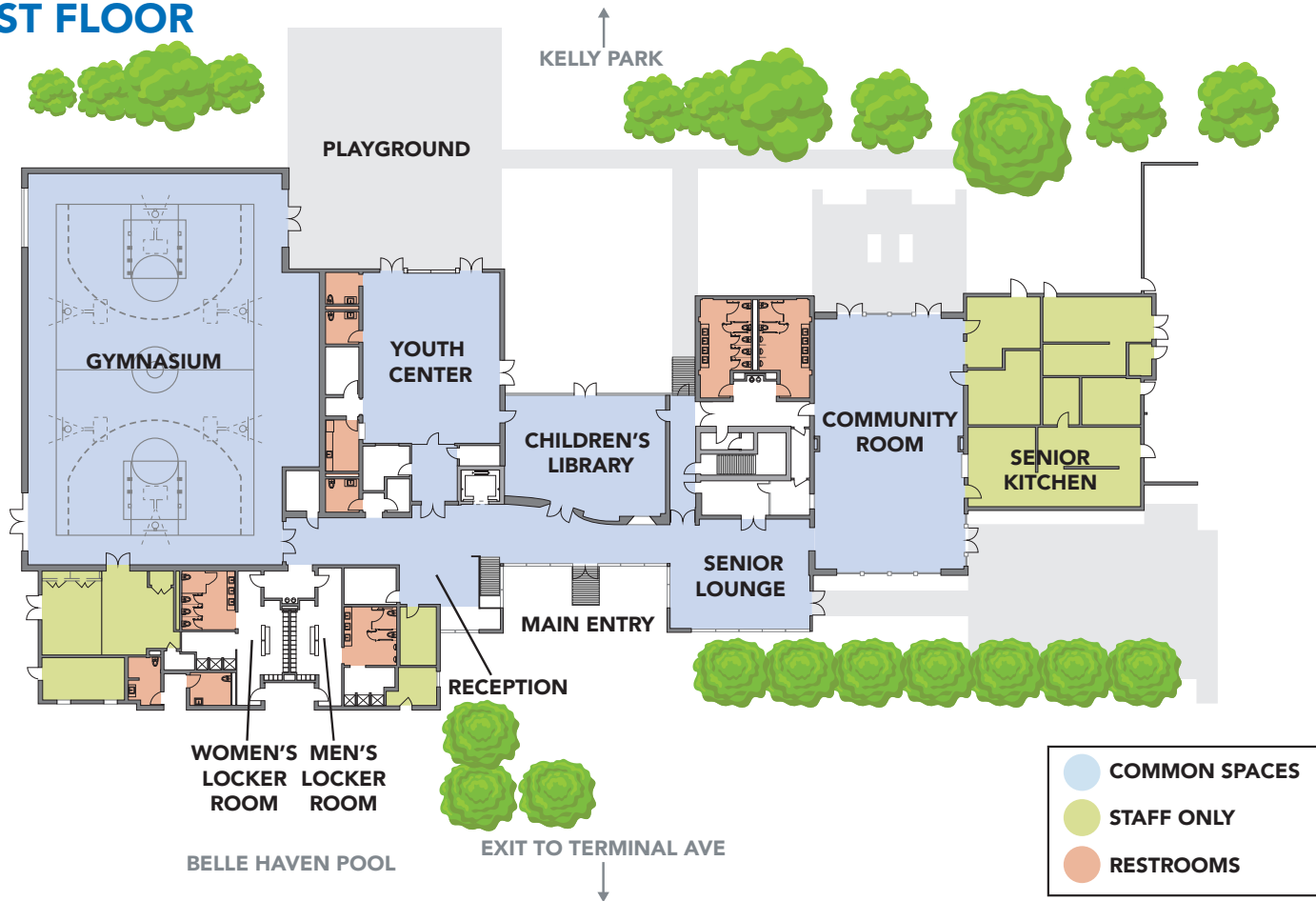
The BHCC is an all-electric, zero combustion, net zero energy project with onsite renewable energy generation, battery microgrid, and electric vehicle charging stations, and its structural design is resilient to serve as an emergency shelter. The City is seeking Leadership in Energy and Environmental Design (LEED) Platinum certification for BHCC, the highest standard of sustainable building that addresses energy, materials, health and indoor environmental quality.



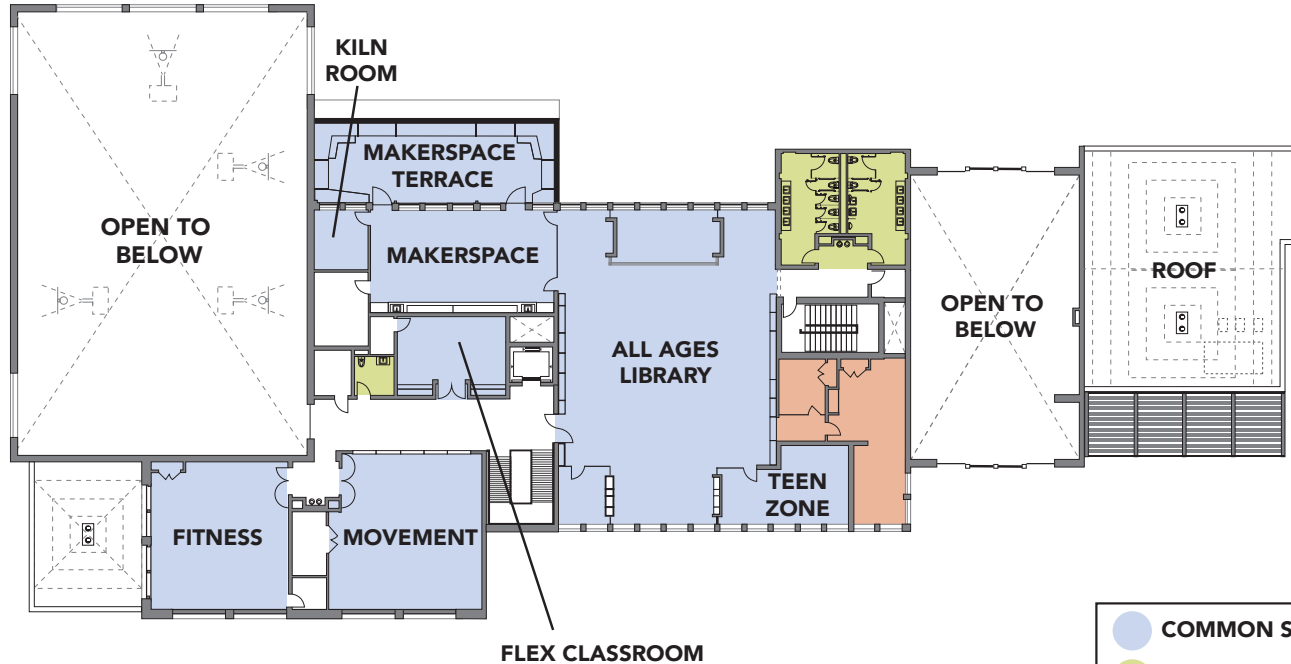
“ The many sustainable features of BHCC, from the energy microgrid to renewable energy generation, provide a leading example of innovation in resilient design and support the city’s goals of taking bold action on climate change and preparing for emergencies. ”

— City Manager Justin Murphy

# FIRST FLOOR



# SECOND FLOOR



# ABOUT THE PROGRAMS

Belle Haven Community Campus is a single multi-generational campus that combines five programs that were previously housed in five separate buildings.

## **BELLE HAVEN LIBRARY**

Features a children's library with outdoor terrace on the first floor, and an all-ages library on the second floor with a makerspace, teen zone, technology access, and quiet study areas. Free community programs include arts and crafts, author talks, book club, educational and literacy programs, magic shows, musical performances, storytime, summer reading game, teen video gaming, and youth after school programs.

## **BELLE HAVEN POOL**

Features a lap/performance pool, instructional pool, child-friendly splash pad, locker room and showers, and family seating areas. Operated by Menlo Swim and Sport under contract with City of Menlo Park, Belle Haven Pool programs include aqua wellness for seniors, family open swim, lap swim, swim lessons, swim teams, water safety training, and youth swim camps.

## **BELLE HAVEN YOUTH CENTER**

Provides licensed afterschool care for children in kindergarten through fifth grade during the school year, and a full-day summer camp program. The program includes nutrition, homework support, playground games and enrichment activities that support the development of the whole child. The youth center has convenient access to the Belle Haven Community Campus library, gymnasium, makerspace, event hall, and adjacent Kelly Park.

## **MENLO PARK SENIOR CENTER**

Provides classes, social events, and activities for active elder adults. Programs include daily meal service, arts and crafts, dance and fitness, table games, lifelong learning, and food pantry distribution. Transportation services are provided to senior center users daily.

## **ONETTA HARRIS COMMUNITY CENTER**

Features a gymnasium including basketball and volleyball, fitness center, movement studio, flexible classroom, locker rooms and showers. Programs include health and wellness, movement and dance, drop-in and league sports, arts and crafts for all ages, lifelong learning and more. It is named after Onetta Harris, who was a local community leader, youth advocate, and member of the Belle Haven Advisory Board.

## ABOUT THE BELLE HAVEN NEIGHBORHOOD

Once known as Belle Haven City, the Belle Haven neighborhood was annexed into the City of Menlo Park in 1949. Bounded by the US-101 freeway to the south, the Dumbarton Rail corridor and industrial areas to the north, and Willow Road to the east, Belle Haven encompasses approximately 0.6 square miles in area, with the highest population density in Menlo Park. The Belle Haven neighborhood has always been the most diverse neighborhood in Menlo Park. In the early 1980s, the Black population in Belle Haven was at its highest, roughly 94%. Today, The Belle Haven neighborhood has the second highest percentage of Black residents in San Mateo County and its Hispanic/Latinx population has grown significantly in recent years.\*



\*Source: American Community Survey

## ABOUT KELLY PARK

Located next to the Belle Haven Community Campus, the 8.3-acre park features a synthetic turf soccer field with lights, a full-size walking and running track, outdoor exercise stations, tennis court and pickleball, outdoor basketball court, hydration station, parking, and restroom facilities. The park is named after Joseph B. Kelly, who was a local community leader, youth baseball coach and charter member of Menlo Park's first Recreation Commission.



# Belle Haven Neighborhood Map



## BELLE HAVEN COMMUNITY CAMPUS

1. Hamilton Park
2. Karl E. Clark Park
3. Kelly Park
4. Beechwood School
5. Belle Haven School
6. Belle Haven Child Development Center
7. Belle Haven Community Garden
8. Belle Haven Tot Lot
9. Boys and Girls Club
10. Ivy Plaza
11. Neighborhood Service Center
12. Menlo Park Fire Station No. 77
13. Meta Park
14. US-101 Bike/Ped Overcrossing



**BELLE HAVEN COMMUNITY CAMPUS**  
100 Terminal Ave, Menlo Park, CA 94025.  
**Phone:** 650-330-2205  
**Web:** [menlopark.gov/bhcc](http://menlopark.gov/bhcc)