

# SAFER Bay Project

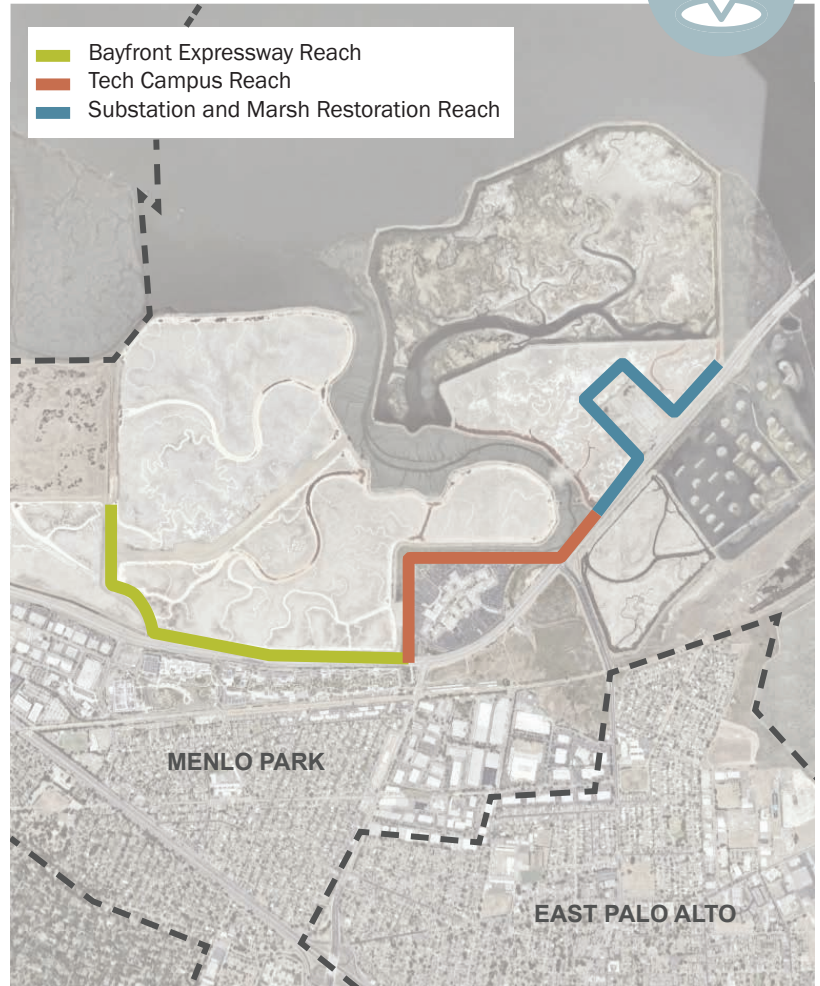
## Strategy to Advance Flood Protection, Ecosystem Restoration, and Recreation

The SAFER Bay Project is a regional effort to protect communities and infrastructure from sea level rise and tidal flooding. The City of Menlo Park is completing the design for their portion of the overall project and anticipates design completion by the end of 2026.

In Menlo Park, the project will use levees, floodwalls, and natural solutions to protect 3.7 miles of shoreline—safeguarding homes, schools, businesses, and roads from coastal flooding.

### Key project areas in design:

- Bayfront Expressway Reach
- Tech Campus Reach
- Substation and Marsh Restoration Reach



## We want to hear from you!

How to participate:

- Attend events/workshops
- Share feedback
- Sign up for updates



Email: [publicworks@menlopark.gov](mailto:publicworks@menlopark.gov)

Phone: 650-330-6740



## Scan the QR code

to visit the project website for updates ([menlopark.gov/Government/Departments/Public-Works/Capital-improvement-projects/SAFER-Bay-project](https://menlopark.gov/Government/Departments/Public-Works/Capital-improvement-projects/SAFER-Bay-project)), to join the SAFER Bay listserv, or to learn more about the project.

