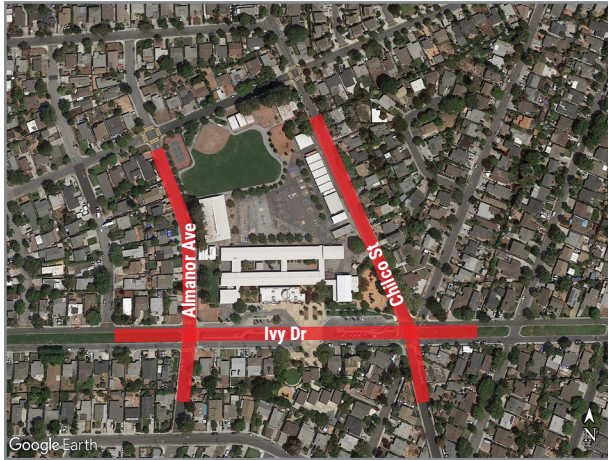


SAFETY NEAR BELLE HAVEN SCHOOL

Traffic Hot Spots During School Hours

Please use caution and share the road.



Drivers

1. When driving on **Ivy Dr** use extreme caution as children may be exiting **Almanor Ave** or **Chilco St** onto Ivy Dr.
2. Do not park in school white and red zones during school drop off/pick up.

Bicycles and Pedestrians

3. **Willow Rd** is a busy traffic corridor. Use caution and **cross at Coleman Ave, Gilbert Ave, Durham St, Newbridge St, O'Brien Dr, or Ivy Dr** where there are traffic lights. (See back side of this brochure)
4. When **crossing over Highway 101**, use the **Ringwood Ave Bicycle/Pedestrian Bridge** when possible. The **Willow Rd overpass** has many cars entering/exiting the freeway.



July 2023

BELLE HAVEN SCHOOL

SUGGESTED WALK AND ROLL MAP

WALKING AND BIKING SAFETY

Stop at the curb's edge. **Look** left, right, and behind you.

Be Predictable. Follow all traffic laws and stop at stop signs. **Be aware of traffic.** Ride single file in the direction of traffic. Use lights when riding at night.

Use Hand Signals



Right Turn



Slow or Stop



Left Turn

Make Eye Contact with drivers.



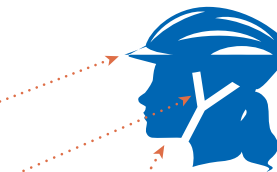
Cross with heads up and look around.



Wear Your Helmet

Your helmet should cover your forehead and rest just above your eyebrows.

Straps should form a "V" under ears when buckled.



Tighten the strap so it is snug under your chin.



The City of Menlo Park supports children and families in walking and bicycling to school through safety education, fun events, and traffic safety improvements around schools.

Learn more and get involved:

Ravenswood City School District:
ravenswoodschools.org

City of Menlo Park Safe Routes to School:
menlopark.gov/saferoutestoschool

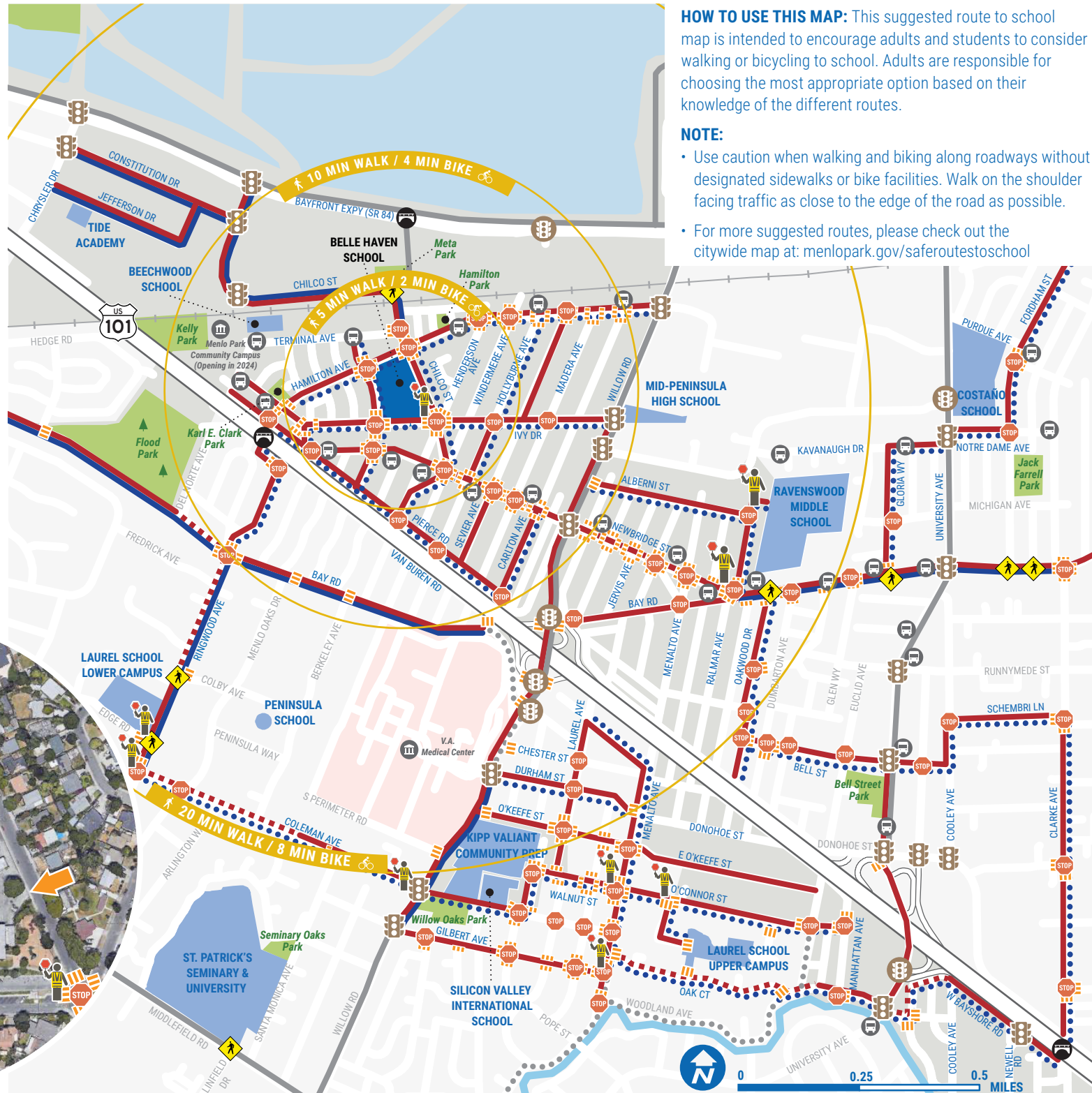
Parents for Safe Routes: parents4saferoutes.org

BELLE HAVEN SCHOOL

415 Ivy Drive
Menlo Park, CA 94025

Legend

- | | | | |
|--|----------------------------------|--|--|
| | All-Way Stop | | Suggested Walk Route With/Without Walking Path |
| | Traffic Signal With Crosswalk | | Suggested Bike Route With/Without Bike Lane |
| | Traffic Signal Without Crosswalk | | Other Bike Lane/Route |
| | Crosswalk | | Pedestrian/Bike Bridge |
| | Enhanced Crosswalk | | SamTrans Stop (Routes 81, 281) |
| | Crossing Guard | | Place of Interest |
| | Bike Parking | | Railroad Tracks |
| | Bike Repair Station | | Attendance Area |
| | School Entrance | | Loading Zone |



HOW TO USE THIS MAP: This suggested route to school map is intended to encourage adults and students to consider walking or bicycling to school. Adults are responsible for choosing the most appropriate option based on their knowledge of the different routes.

NOTE:

- Use caution when walking and biking along roadways without designated sidewalks or bike facilities. Walk on the shoulder facing traffic as close to the edge of the road as possible.
- For more suggested routes, please check out the citywide map at: menlopark.gov/saferoutestoschool

