



SAFE ROUTES TO SCHOOL

Task Force Meeting

June 16th, 2021

AGENDA

1. Introductions and partner updates
2. Safe Routes to School Program Updates
3. Belle Haven Walk Audit
4. Biking and Walking Safety near Schools
Survey results
5. City Project Updates
6. Announcements



1) INTRODUCTIONS

INTRODUCTIONS

- Name
- Agency / Organization and updates



2) SRTS PROGRAM UPDATES

2020-2021 HIGHLIGHTS

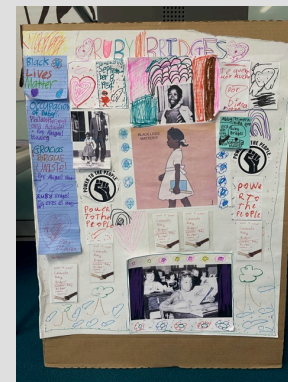
- 3 encouragement events
Helmet giveaways in Belle Haven, Ruby Bridges Walk to School Day, Walk and Roll to School Week in May
- Monthly newsletters
- Bike donations for M-A bike club
- Biking and walking safety survey and community meetings



Helmet Giveaways at Belle Haven School,
October 2020



Ruby Bridges Walk to School Day at TIDE
Academy, November 2020



Ruby Bridges Walk to School Day
at Laurel School, November 2020



2021-2022 SRTS PRIORITIES



- Encouragement citywide events, challenges and contests
- Ped/Bike education
Pedestrian curriculum and other curriculum pilots, bike rodeos, etc.
- School “walk audits”

What are your school priorities for next school year?



3) BELLE HAVEN WALK AUDIT

WALK AUDIT FINDINGS

Belle Haven Elementary School



JUNE 2021



San Mateo County
SAFE ROUTES TO SCHOOL

Healthy Kids · Green Communities · Safe Journeys

alta
PLANNING + DESIGN

BELLE HAVEN WALK AUDIT

- May 25, 2021
- 9 participants



BELLE HAVEN WALK AUDIT

- Walked around parameter of school and adjacent streets



BELLE HAVEN WALK AUDIT

- In general,
 - Good bike/ped infrastructure
 - Good signage and striping



BELLE HAVEN WALK AUDIT

- A lot of students are bused to/from the school
- Buses cause challenges for vehicle circulation



BELLE HAVEN WALK AUDIT

- Most students are driven to/from school
- Opportunity to establish a Park and Walk location, such as at the Boys and Girls Club



NEXT STEPS

- Assessment Report
- On-Street Recommendations
- Program Recommendations

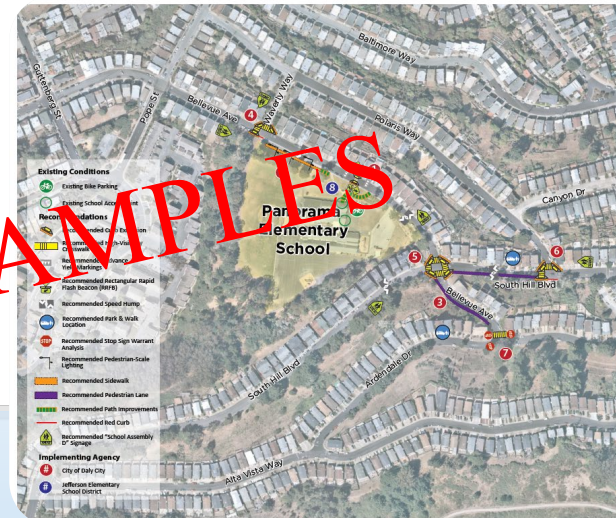


School Safety Assessment
Technical Memorandum

Panorama Elementary School
Brisbane Elementary School District

January 2020

SAMPLES



Safe Routes to Schools Improvement Plan Panorama Elementary School Daly City, CA

- 1** **BelleVue Ave School Frontage**
Consider upgrading existing high-visibility crosswalk to raised crosswalk and installing a Rectangular Rapid Flash Beacon (RRFB). Install advance yield markings at existing crosswalk in front of school drop-off zone.
Install "School Assembly 8" signage.
- 2** **School Drop-Off Loop**
Install pedestrian scale lighting on south side of drop-off loop.
Install sidewalk on the south of drop-off loop by 2' of the decreasing width of painted buffer between drop-off loop and street.
- 3** **BelleVue Ave (between South Hill Blvd and Ardenkade Ave)**
Install sidewalk on the west side of the road.
- 4** **BelleVue Ave/Waverly Way**
Upgrade existing crosswalk to high-visibility.
Install red curb between west leg of intersection and drop-off loop.
Install curb extensions on northeast, northeast, and southeast corners of intersection.
Install "School Assembly 8" signage on Waverly Way approach.
- 5** **BelleVue Ave/South Hill Blvd**
Upgrade existing crosswalk to high-visibility.
Install curb extensions on northwest, northeast, and southeast corners of intersection.
Install sidewalk on the south side of South Hill Blvd between BelleVue Ave and Polaris Way.
Install Assembly 8" signage on South Hill Blvd.
Consider recommending South Hill Blvd as a park and walk location for students.
Upon installation of sidewalk on the west side of BelleVue Ave, install high-visibility crosswalks on west and south leg of intersection.
- 6** **South Hill Blvd/Polaris Way**
Install curb extensions on the southeast and northwest corners of intersection.
Upgrade existing crosswalk to high-visibility.
Install red curb on the south side of South Hill Blvd intersection.
Upon recommendation of sidewalk on the west side of South Hill Blvd, install high-visibility crosswalk on west leg of intersection.
Install curb extension on southwest corner of intersection.
- 7** **BelleVue Ave/Ardenkade Dr**
Conduct stop sign-warrant analysis.
If stop signs are warranted, install high-visibility crosswalk on north leg of intersection.
- 8** **Panorama Elementary School Campus**
Build an ADA-compliant school entry path or upgrade existing path to be ADA-compliant.
Install "School Assembly 8" signage on path near to public sidewalk between the drop-off loop and entry path. Prepare as a path or repurpose with benches, gardens, or other street furniture.



0 200 ft
Improvements not to scale
SAY MOVES TO EXPLORE

QUESTIONS?





4) WALKING & BIKING SAFETY NEAR SCHOOLS

SURVEY

In April and May, 173 answers collected



- **5 categories of issues**
 - Sidewalks
 - Street Crossings and Intersections
 - Comfort
 - Driver Behavior
 - Safety
- **Locate the issue on a map**
- **Add a Picture of the problem**
- **Other comments**

Issue Category / Categoría de temas*

Please select the category that best encompasses your issue.

Por favor, seleccione la categoría que mejor abarque su problema.

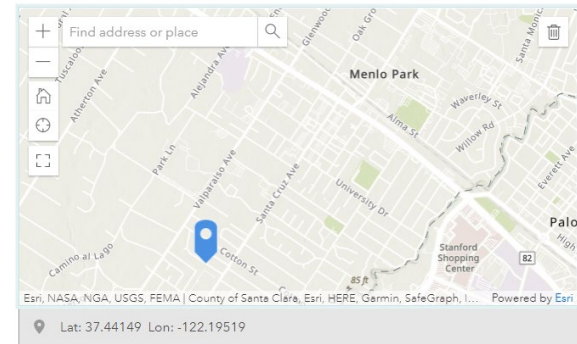
Location of your issue / Ubicación de su tema

Place a point at a specific location on the map where your issue is located.

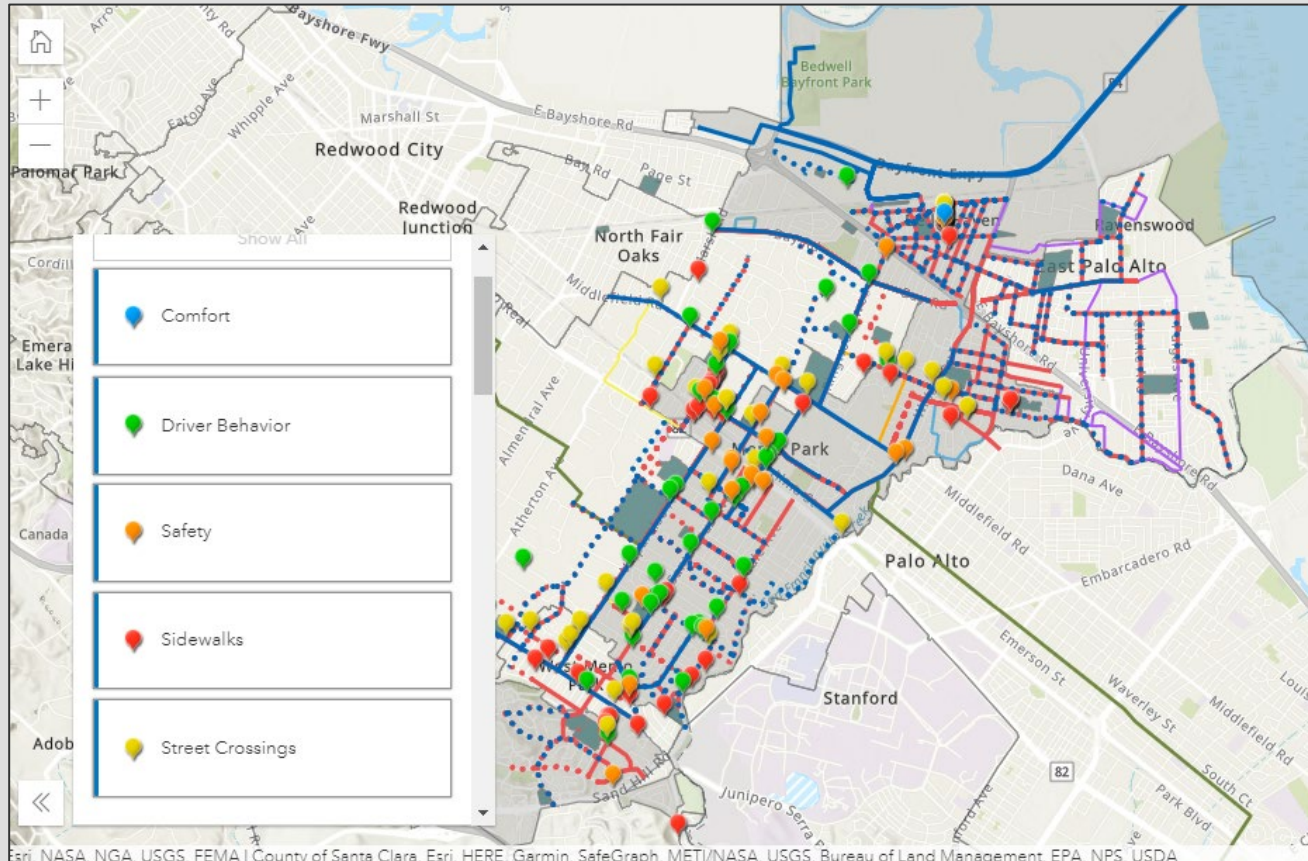
You can search for the school location in the search bar on the map.

Coloque un punto en una ubicación específica del mapa donde se encuentra el problema.

Puede buscar la ubicación de la escuela en la barra de búsqueda del mapa.



SURVEY RESULTS



Esri, NASA, NGA, USGS, FEMA | County of Santa Clara, Esri, HERE, Garmin, SafeGraph, METI/NASA, USGS, Bureau of Land Management, EPA, NPS, USDA

SURVEY RESULTS

Locations with more instances (≤ 5)

Corridor / Main Street	Issue (+ street intersection if specified) <i>In orange</i> = another jurisdiction / property, e.g. Town of Atherton, San Mateo County, school district <i>In purple</i> = collaboration needed between the City of Menlo Park and another jurisdiction
Encinal Ave	<ul style="list-style-type: none">- Lack of sidewalks- Vehicles blocking bike lane/walking path- Distracted drivers- Crosswalk at Middlefield needs paint refresh
Santa Cruz Ave	<ul style="list-style-type: none">- Hillview Middle School: Dangerous Drop Off, no car lane for the student drop off- Lemont St: Distracted drivers, request for a crosswalk- Oakdell Dr: Speeding cars even with lighted crosswalk- Landscaping blocking sidewalks, request for protected bike lanes
Laurel St	<ul style="list-style-type: none">- Glenwood Ave, Bassett Ln: Cars/trash cans blocking bike lane, Lack of sidewalks (Atherton)- Encinal ave: Distracted drivers, Unsafe intersection (Atherton/MP)- Oak Grove Ave: Unsafe left turn for bikers from Oak Grove east to Laurel- Distracted drivers, Request for a separated bike lane
El Camino Real	<ul style="list-style-type: none">- Cars running red light at Alma St (Caltrans/Palo Alto)- No bike lanes on Menlo Ave to cross ECR (Caltrans/MP)- Fast cars, unsafe crossings for bikers/peds (Caltrans/MP)
Middle Ave	<ul style="list-style-type: none">- Olive St: Dangerous intersection for bikers- Obstructed bike lanes by vehicles, speeding cars, distracted drivers

Locations with more instances (≤ 5)

Corridor / Main Street	<p style="text-align: center;">Issue</p> <p><i>In orange</i> = issue in another jurisdiction / property, e.g. Town of Atherton, San Mateo County, school district <i>In purple</i> = collaboration needed between the City of Menlo Park and another jurisdiction</p>
Coleman Ave	<ul style="list-style-type: none"> - Need for stop sign at Santa Monica Ave - Sidewalk and bike lane needed (County/MP) - Speeding cars (County/MP)
Middlefield Rd	<ul style="list-style-type: none"> - Speeding cars (Atherton/MP) - Lack of sidewalks(Atherton/MP) - Narrow bike lanes (Atherton/MP) - Unsafe crossings (Atherton/MP)
Alameda de las Pulgas	<ul style="list-style-type: none"> - Santa Cruz Ave: Narrow Sidewalks - Gordon Ave / corridor: Need for non/lighted crosswalks (County) - Camino al Lago: Driver behavior/ped safety (Atherton)
Ravenswood Ave	<ul style="list-style-type: none"> - Alma St: Distracted drivers, Speeding cars despite lighted crosswalk - Marcussen Dr: Lack of sidewalk, between Marcussen and Middlefield
Valparaiso Ave	<ul style="list-style-type: none"> - Need crosswalk at Barney Ave or Cloud Ave, Orange Ave/Franks Ln (County) - Need sidewalks on Valparaiso (County) - Distracted and speeding drivers (County/Atherton/MP) - Lighted crosswalk often out of order at Elder Ave

RELATED CITY PROJECTS

Corridor	Related City Projects Transportation Master Plan (TMP)
All / Citywide	<ul style="list-style-type: none">- TMP Tier 1 # 157: "Enhanced Bicycle and Pedestrian Detection", install bike/ped detection at intersections- TMP Tier 1 # 166: "Progressive Safety Enforcement", working with PD- TMP Tier 1 # 195: "Radar Speed Feedback Signs", identifying locations for sign installation- TMP Tier 1 # 196: "Update Crosswalk Policy", identify RRFB locations- TMP Tier 1 # 197: Citywide Sharrow "Update Sharrow Policy", best practices for signage
Encinal Ave	<ul style="list-style-type: none">- TMP Tier 2 # 82: "Downtown Mobility Improvements", adding bike lanes through parking removal- TMP Tier 2 #179: "Encinal Ave Corridor Mobility Project", adding sidewalk or path along north side through parking/landscape removal- TMP Tier 2 # 180: "Encinal Ave Corridor Mobility Project", adding bulb out on SW corner at Laurel
Laurel St	<ul style="list-style-type: none">- TMP Tier 1 # 74 (Ravenswood): "Laurel St Corridor Improvement Project", upgrades to intersection, including restriping lanes and adding bike lanes through parking removal- TMP Tier 1 # 75 (Burgess to Willow): "Laurel St Corridor Improvement Project", remove parking for bike lane- TMP Tier 2 # 71, 72: "Laurel St Corridor Improvement Project", sidewalk installation, traffic signal installation



Corridor	Related City Projects Transportation Master Plan = TMP
Santa Cruz Ave	- TMP Tier 2 # 130 (Sharon-Oakdell), 132 (Olive-Orange), 133 (Orange-Avy): "West Menlo Mobility Improvements", possible relocation of existing crosswalk, new sidewalk/pathway, traffic signal installation, bike lane improvements
El Camino Real	- TMP Tier 1 #84-92,95: "El Camino Real corridor", crosswalk/bike improvements - TMP Tier 2 #97 (at Creek) "El Camino Real Corridor Improvement Project", bulbout, crosswalk installation
Middle Ave	- TMP Tier 1 #81: Middle Ave Crossing: Caltrain undercrossing - TMP Tier 1 #118: Middle (University to Olive): adding bike lanes, new sidewalks/pathways - TMP Tier 1 #129: Olive (Oak to Santa Cruz): adding bike lanes Santa Cruz to Middle
Coleman Ave	- TMP Tier 1 #61: Coleman (Ringwood to Willow) Menlo Oaks Bicycle Network Improvement", adding bike lanes to City limits



Corridor	Related City Projects Transportation Master Plan = TMP
Middlefield Rd	- TMP Tier 1 #47, 63-65,69,70: Middlefield corridor Improve intersections with crossings, bike boxes/turns, striping
Ravenswood Ave	- TMP Tier 1 #74: Ravenswood and Laurel St: "Laurel St Corridor Improvement Project", upgrades to intersection, including restriping lanes and adding bike lanes through parking removal
Valparaiso Ave	- N/A. Requires coordination with County, Atherton
Alameda de las Pulgas	- N/A. Requires coordination with County, Atherton



4) CITY PROJECT UPDATES

Sharon Rd Sidewalk Project

Ongoing / pending

Ravenswood Avenue – Laurel Street Intersection Improvement

- 1) Enhance existing crosswalks to high visibility crosswalks
- 2) Extending the NB Laurel Street bike lane up to the intersection.
- 3) Painted bulb-outs at the southeast and southwest corners of the intersection

15 mph Speed Limit Sign Expansion in School Zones

1. Hillview Middle School
2. Roberts Pre-school on Coleman Avenue
3. Upper Laurel School
4. Belle Haven Elementary School
5. Oak Knoll School
6. Nativity School
7. St. Raymond's Elementary School
8. Menlo Atherton Coop Pre-school
9. Alto International School
10. Belle Haven Children Development Center
11. La Entrada Middle School
12. Littlest Angels Bethany Preschool on Cloud Ave
13. Menlo Children's Center



Bike Lane on Ravenswood Ave

Design phase for the eastbound from Alma St to Noel Dr. Will complete the bike lane on eastbound Ravenswood Ave from ECR to Middlefield.



5) ANNOUNCEMENTS



THANK YOU!