



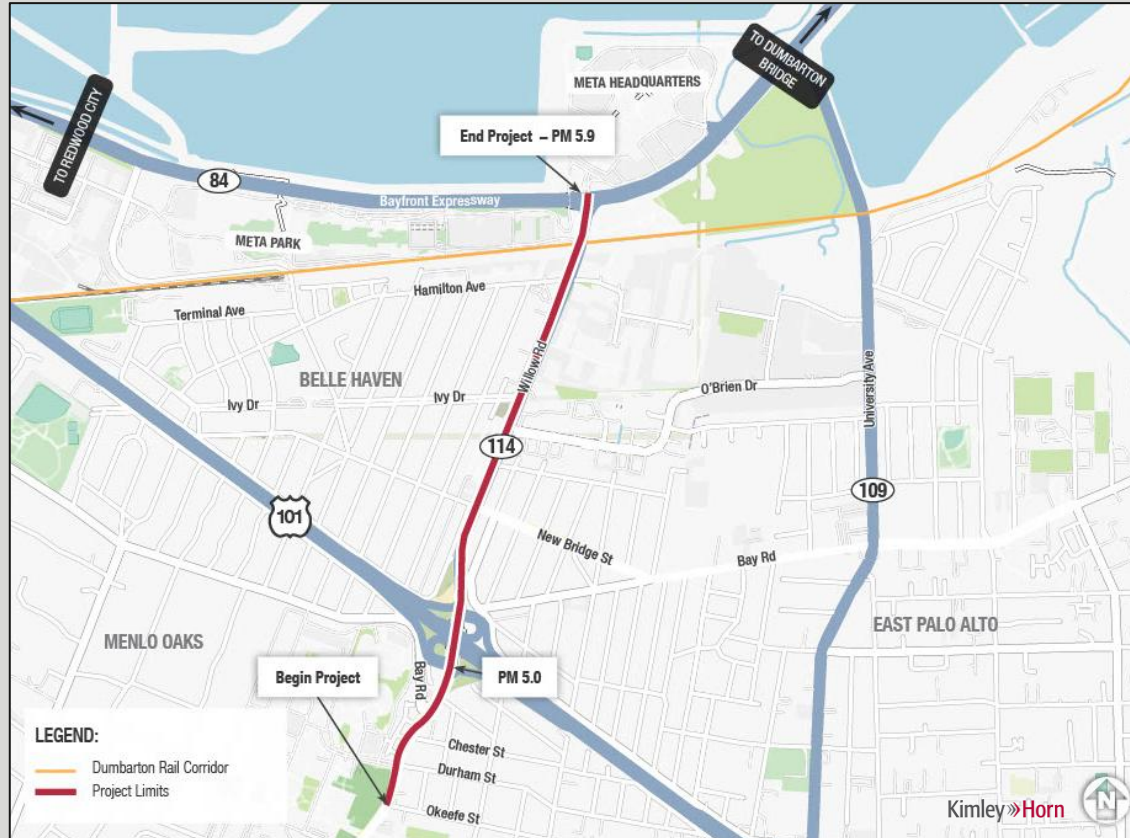
WILLOW ROAD CLASS IV BIKEWAY AND PEDESTRIAN SAFETY IMPROVEMENTS PROJECT

Complete Streets Commission Session April 9, 2025

AGENDA

- Project Location
- Purpose and Need
- Community Engagement
- Proposed Project Improvements
- Traffic and Environmental Analysis
- Project Cost Estimate
- Next Steps

PROJECT LOCATION





PURPOSE AND NEED



The Project **NEEDS** are:

- 22 collisions involving walking/biking at intersections (2013-2022)
- Crosswalks are long and difficult to see
- Too few crossings in a 1.3-mile-stretch
- Gaps in bicycle facilities
- High conflict areas at all intersections
- Missing direct connection to the SF Bay Trail
- High-stress Class II bike lanes given high-speed and high-volume traffic





PURPOSE AND NEED





PURPOSE AND NEED



The **PURPOSE** of the Project is to:

- Improve **safety, comfort, and accessibility** for bicyclists and pedestrians along Willow Road
- Enhance **connectivity** for pedestrians and bicycles along the San Francisco (SF) Bay Trail and connect the SF Bay Trail to bike facilities south of U.S. 101
- Improve **transit** reliability and rider comfort

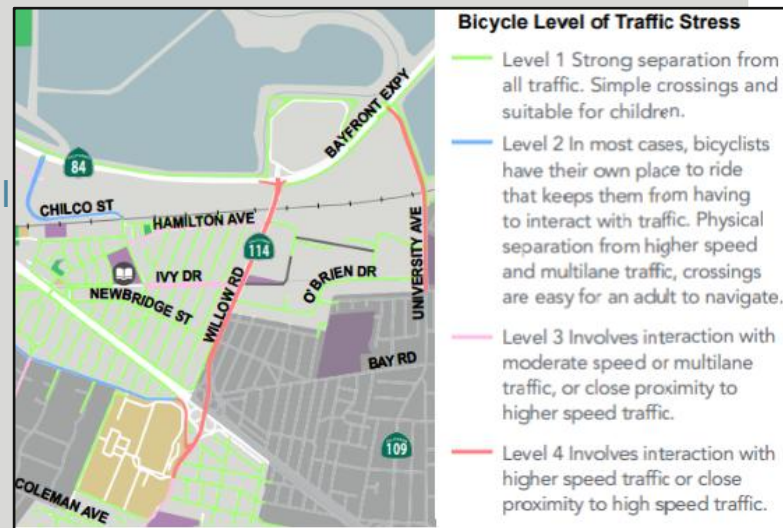




PROJECT HISTORY



- Willow Road is a countywide backbone bikeway network that links regionally significant destinations across local jurisdictions - C/CAG Bicycle and Pedestrian Plan (2021).
- The City's 2020 Transportation Master Plan identifies Willow Road as "Stress Level 4" given the existing Class II bike lane's proximity to high-speed traffic.
- The Caltrans District 4 Bike Plan includes Class IV bikeways from SR 84 to U.S. 101 as a top-tier priority.
- Caltrans completed a Project Initiation Document in 2023.
- Currently in Project Approval/Environmental Clearance Phase



Source: City of Menlo Park Transportation Master Plan, November 2020.

COMMUNITY ENGAGEMENT



- Pop Up Events
 - Soleska Market
 - Belle Haven Elementary School

- Online Survey

COMMUNITY FEEDBACK



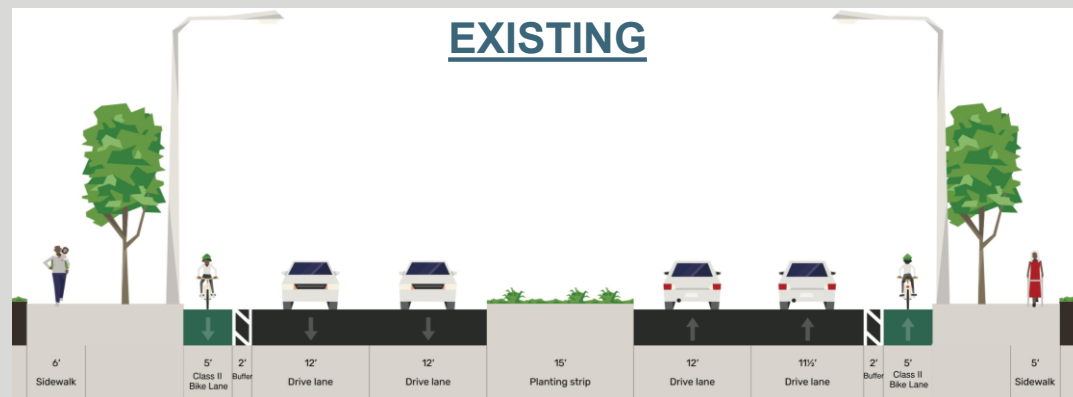
- Overall support for bicycle and pedestrian improvements
- Concerns about high vehicle travel speeds on Willow Road
- Concerns about crossing Willow Road as a pedestrian
- Concerns about poor pedestrian lighting

WILLOW ROAD

EXISTING AND PROPOSED CROSS-SECTIONS



EXISTING



PROPOSED





WILLOW ROAD

EXISTING AND PROPOSED RENDERING



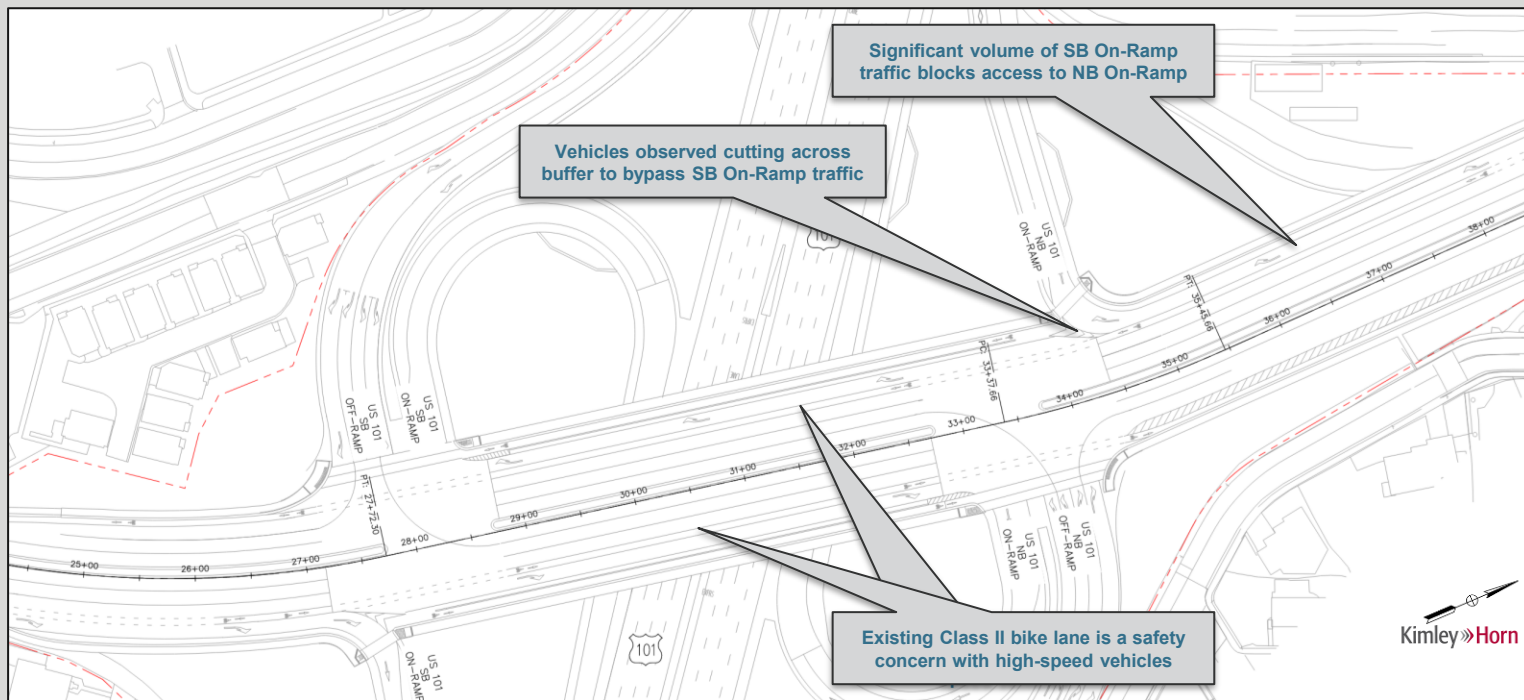
EXISTING



PROPOSED



EXISTING LANE CONFIGURATION



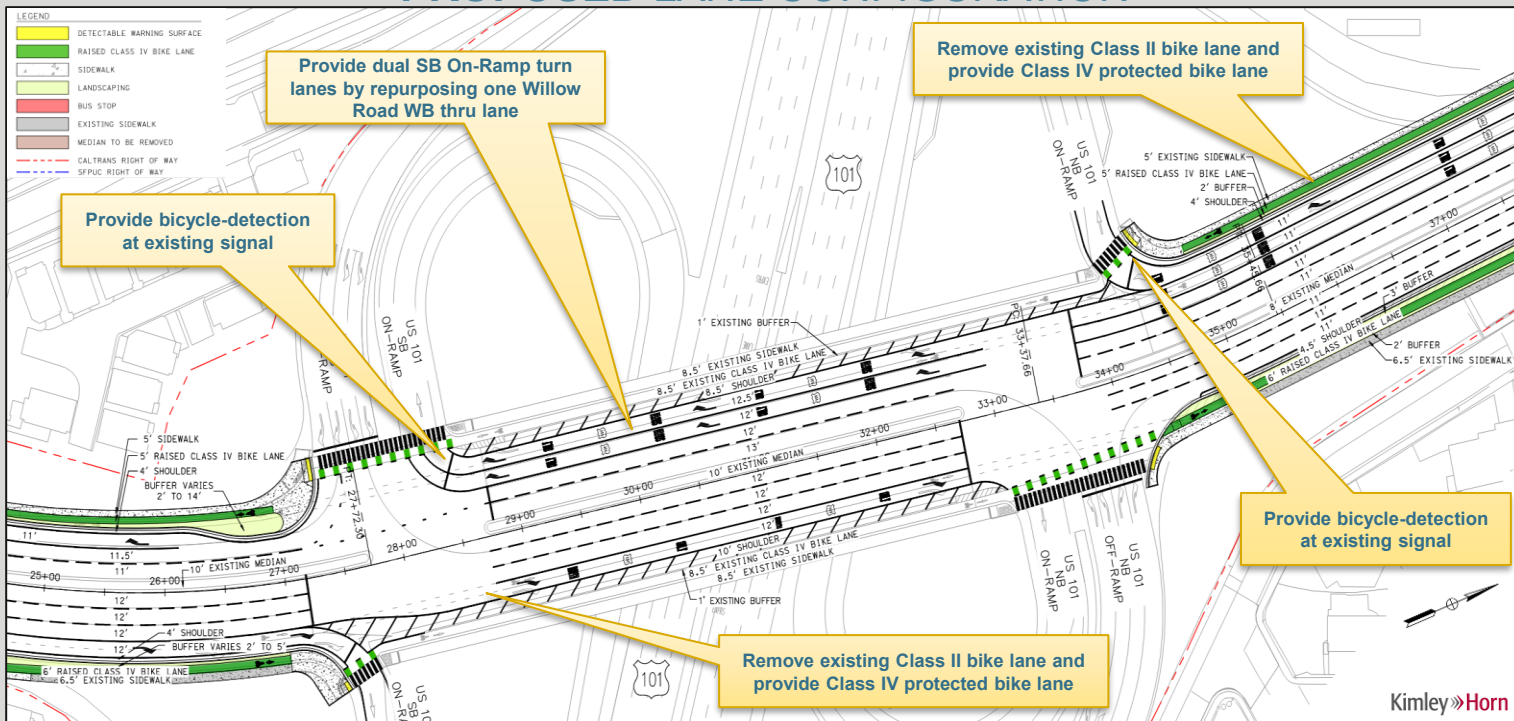


WILLOW ROAD

U.S. 101 INTERCHANGE



PROPOSED LANE CONFIGURATION



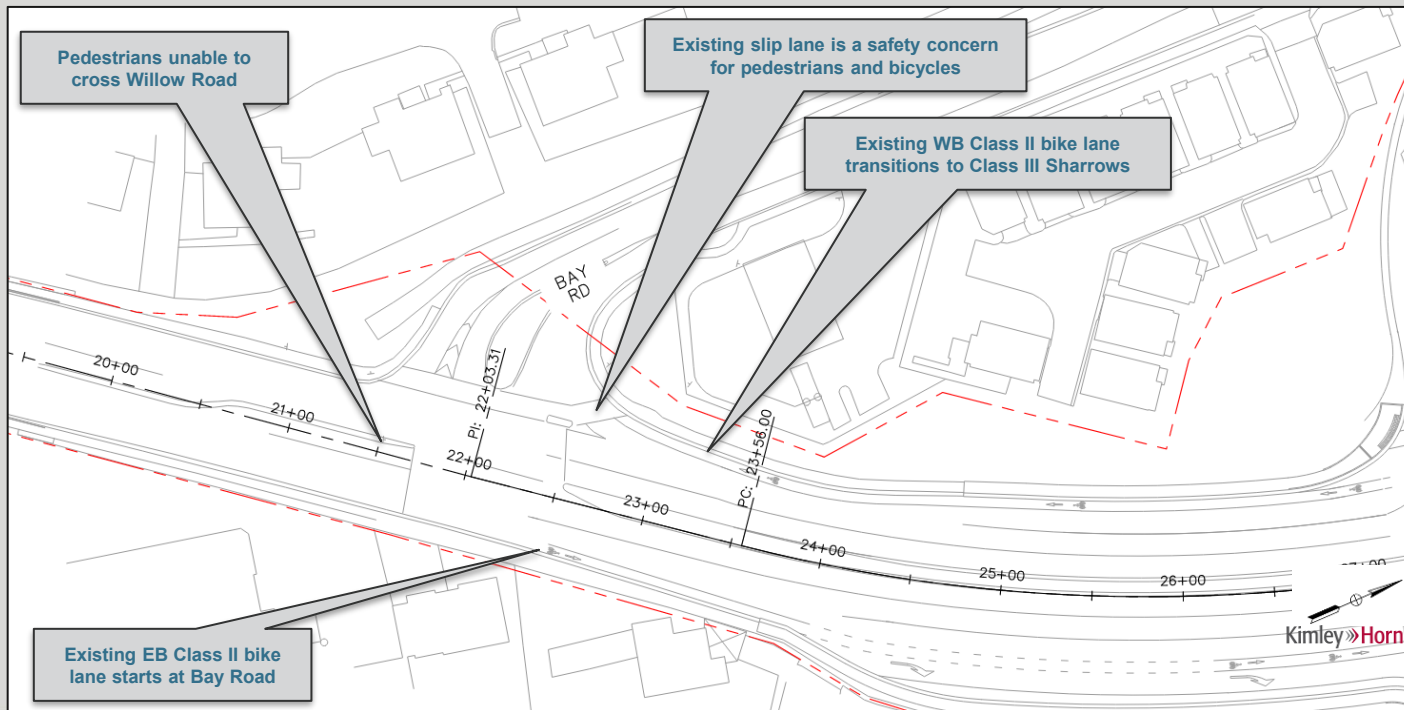


WILLOW ROAD

BAY ROAD INTERSECTION



EXISTING LANE CONFIGURATION



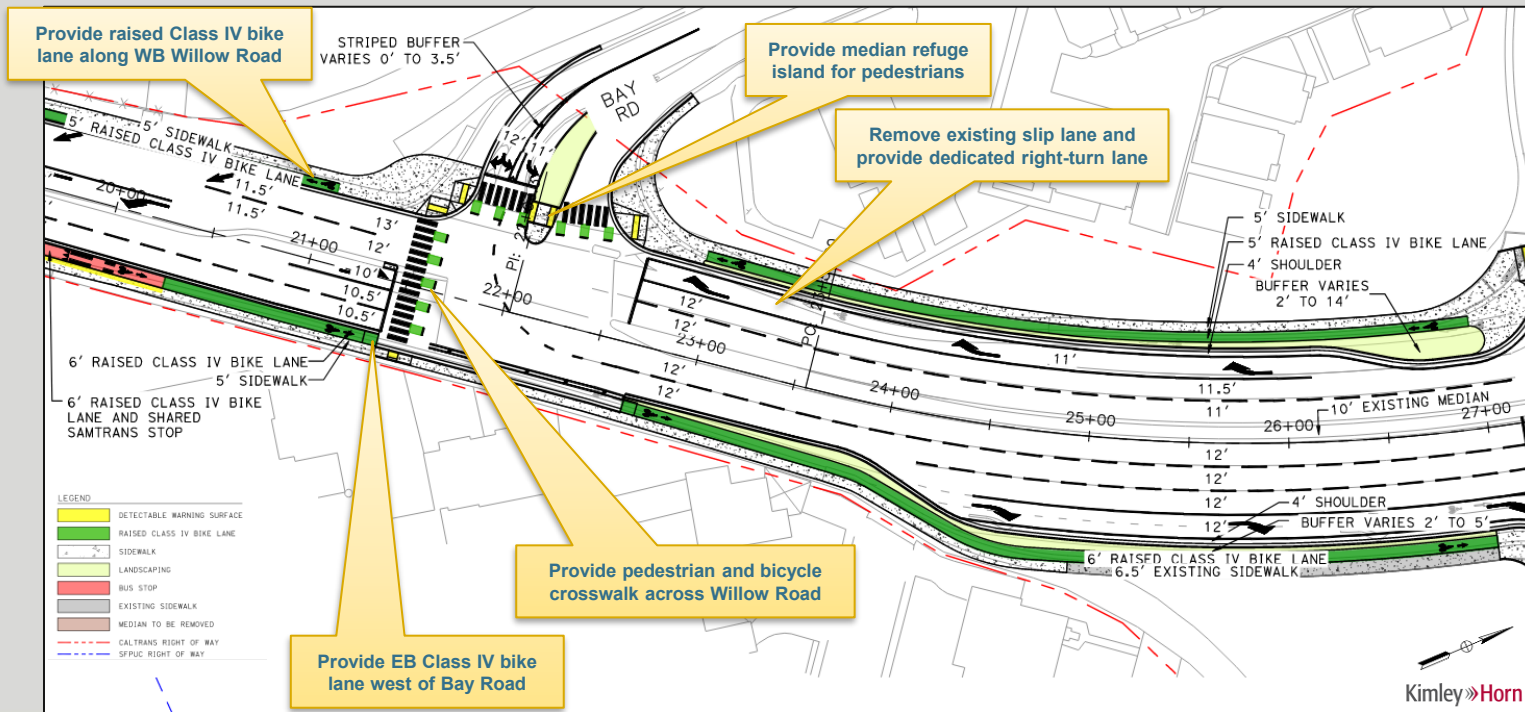


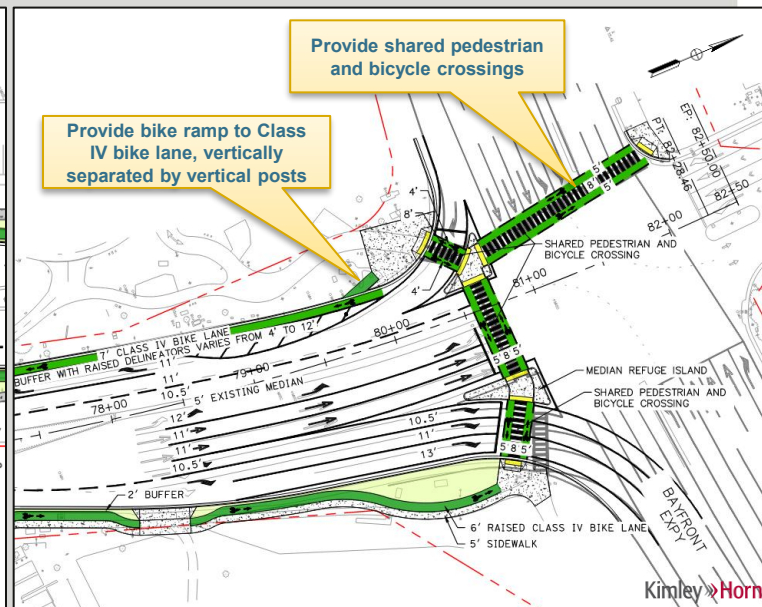
WILLOW ROAD

BAY ROAD INTERSECTION



PROPOSED LANE CONFIGURATION



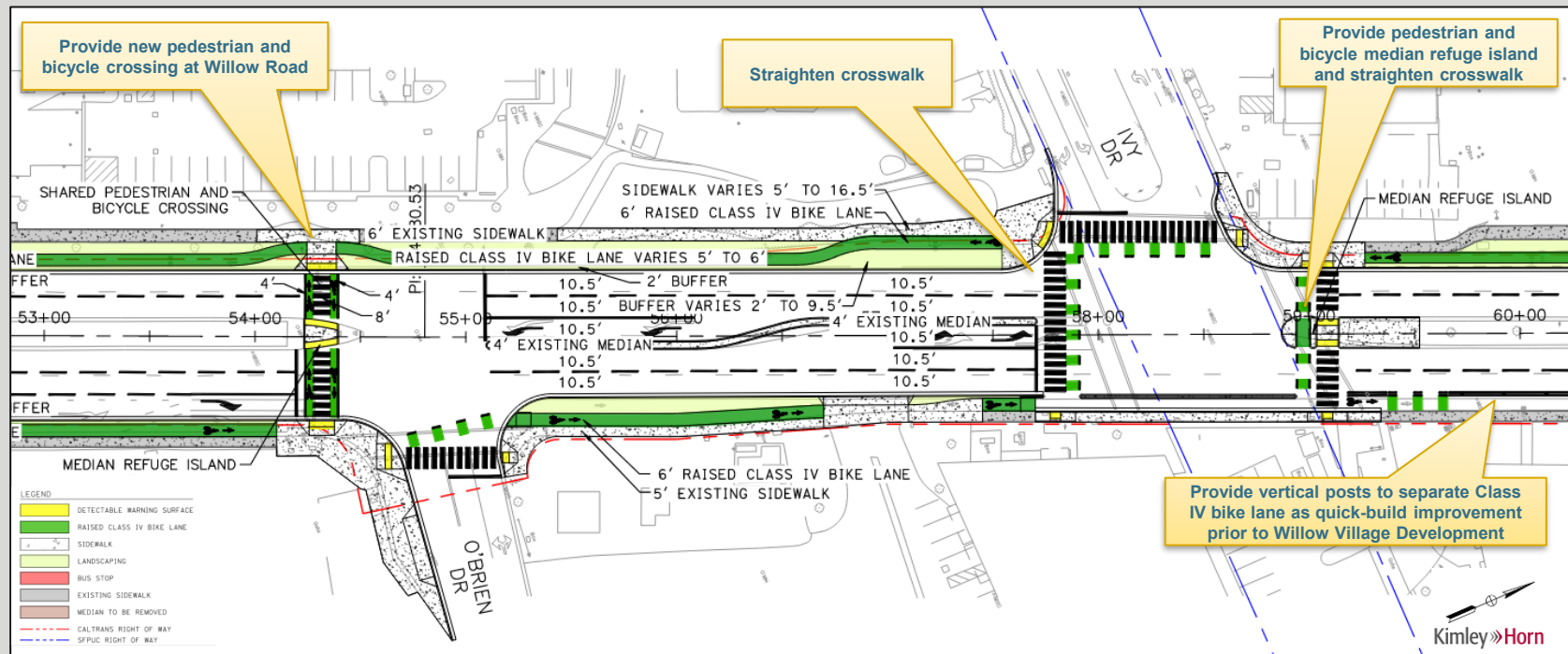


NEWBRIDGE STREET

BAYFRONT EXPRESSWAY



WILLOW ROAD INTERSECTION IMPROVEMENTS



O'BRIEN DRIVE & IVY DRIVE

WILLOW ROAD

PROPOSED PROJECT IMPROVEMENTS





TRAFFIC & ENVIRONMENTAL ANALYSIS



- Traffic Analysis
 - Analyzed Existing Conditions (2023) and Existing + Project Conditions (2023)
 - Delays, queue lengths, and travel times are expected to remain unchanged or improve slightly.
 - Traffic Operations Analysis Memorandum – Approved February 2025

- Environmental Analysis
 - City of Menlo Park is the CEQA lead agency; Caltrans NEPA lead
 - Project qualifies for a CEQA Statutory Exemption under Senate Bill 922
 - The following technical memos were prepared:
 - Air Quality Memo
 - Climate Change Memo
 - Community Impact Assessment (CIA) Memo,
 - Hazardous Materials Memo
 - Location Hydraulic Study (LHS)
 - Natural Environment Study – Minimal Impact (NES-MI)
 - Noise Memo
 - Paleontological Memo
 - Visual Impacts Assessment (VIA) Memo
 - Water Quality Memo



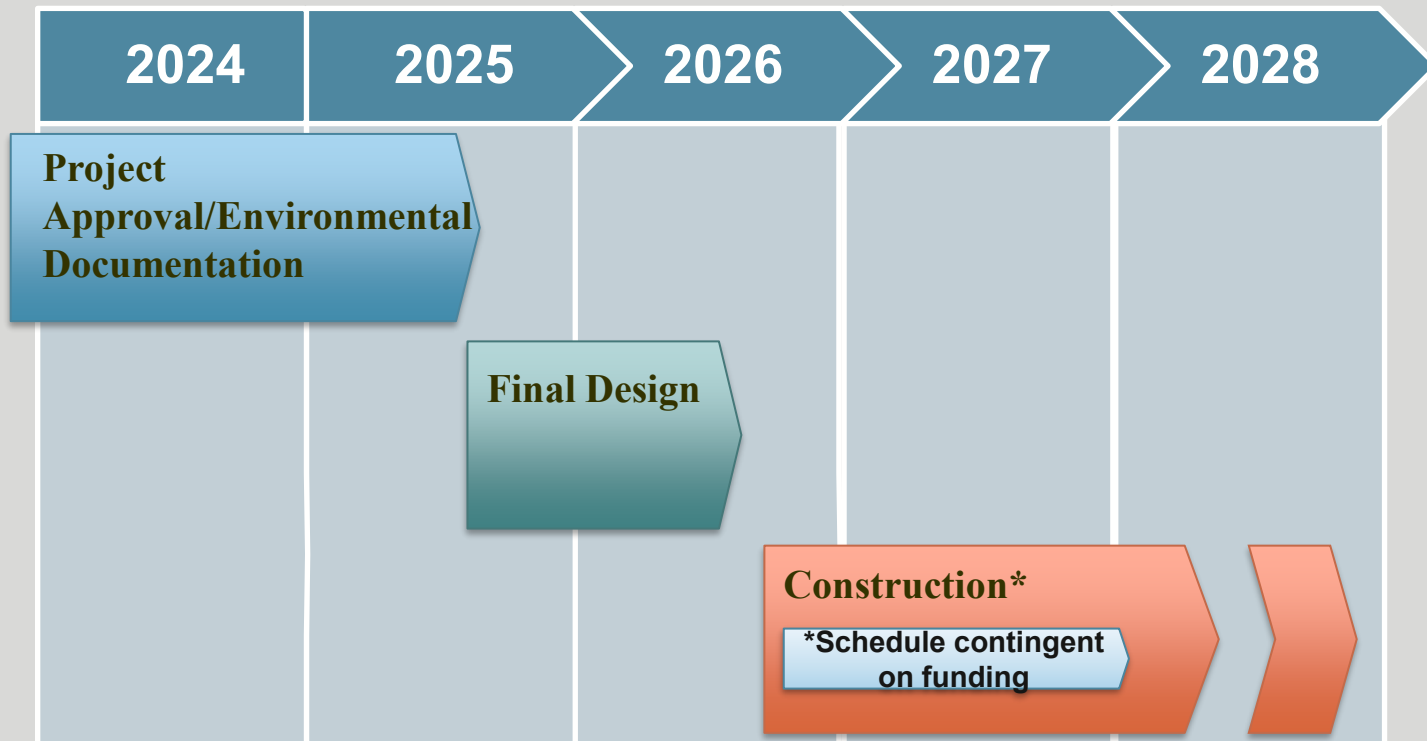
PROJECT COST ESTIMATE

MILESTONE	COST	FUNDING*
Plans, Specifications, and Estimate (PS&E)/Design	\$1.6 M	CITY & SMCTA*
Construction	\$11.3 M	Partially funded by CITY & SMCTA*

* Funded through City CIP & SMCTA’s Measure A &W Highway Program Grant

- Staff is continuing to seek grant opportunities to fully fund Construction Phase

NEXT STEPS





THANK YOU