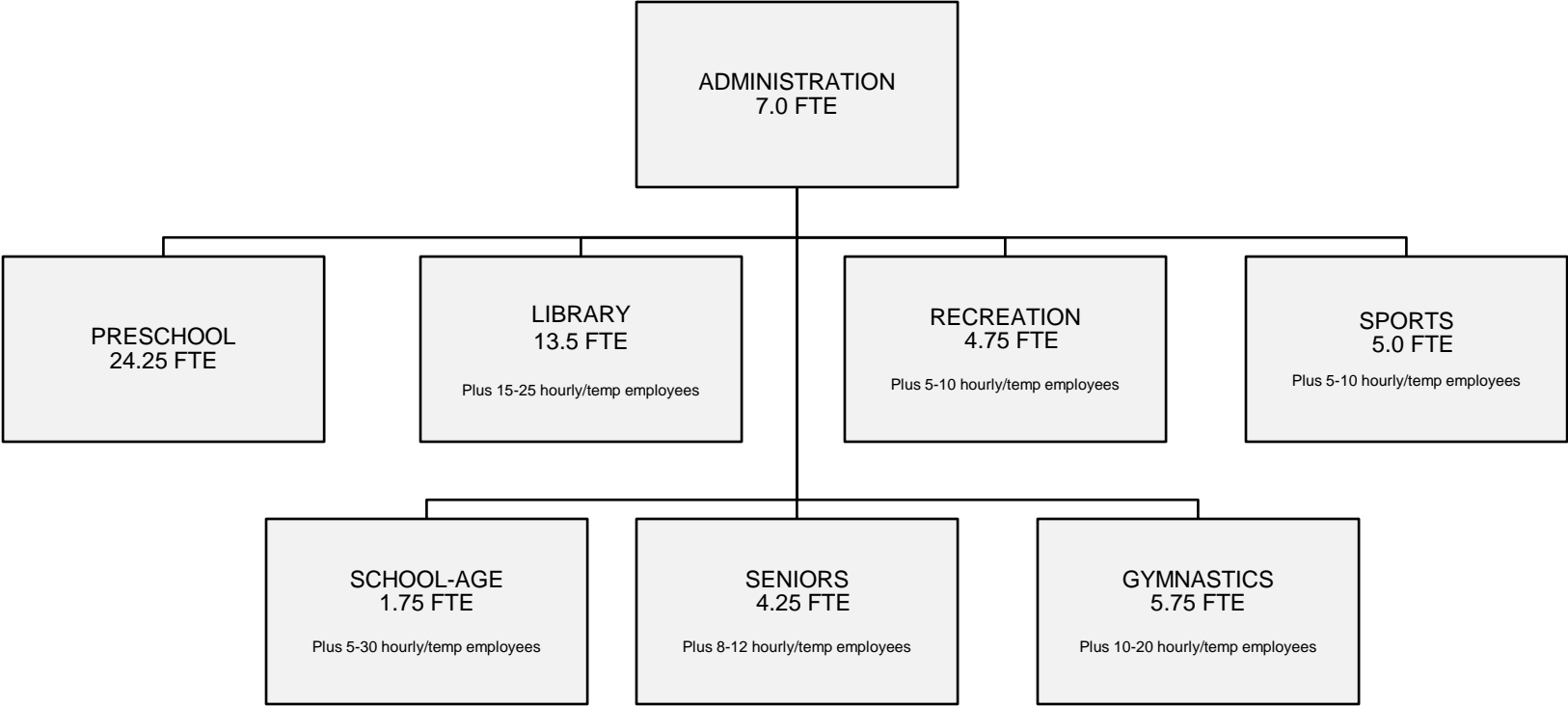
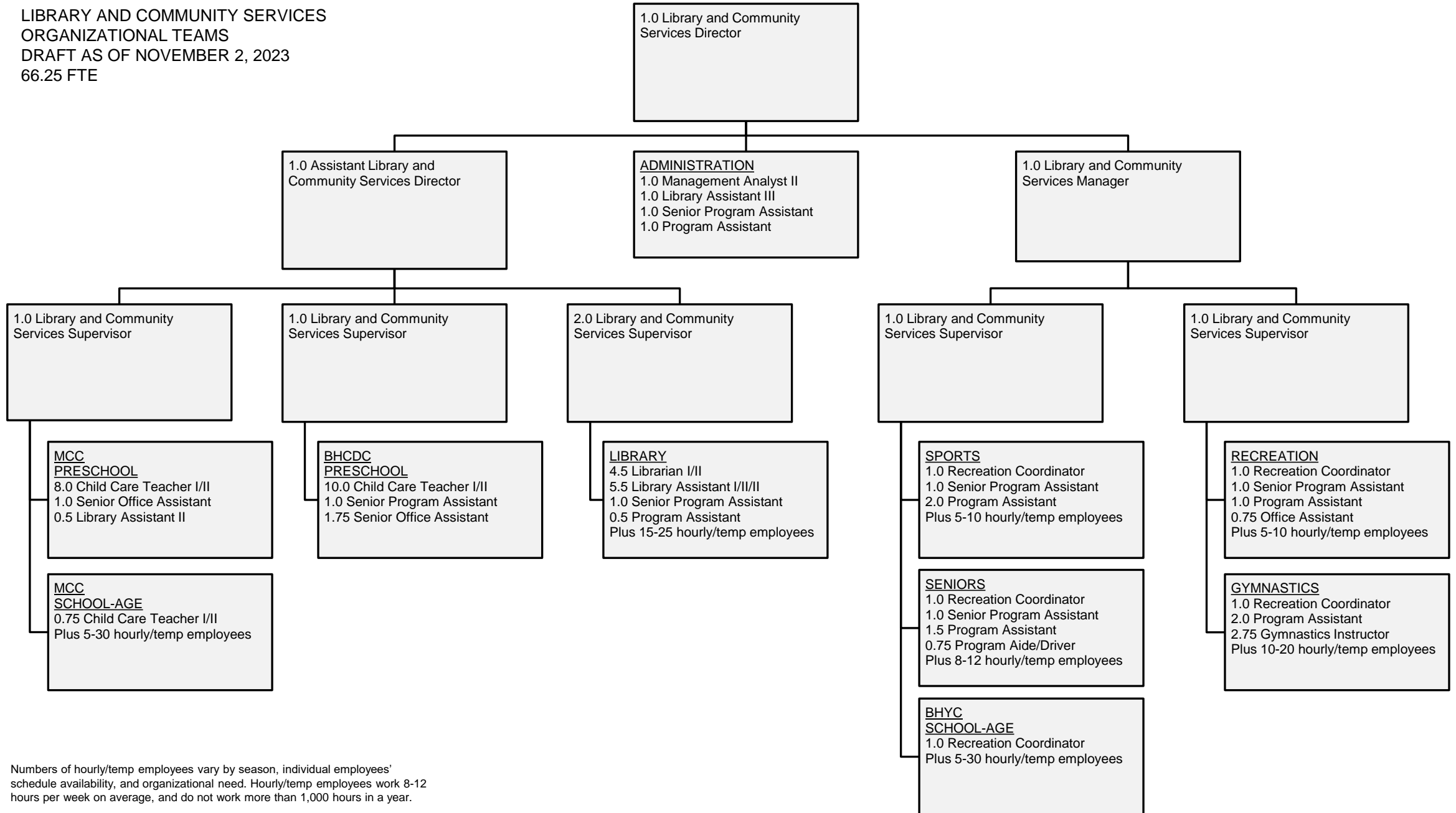


LIBRARY AND COMMUNITY SERVICES
ORGANIZATIONAL TEAMS
DRAFT AS OF NOVEMBER 2, 2023
66.25 FTE



Numbers of hourly/temp employees vary by season, individual employees' schedule availability, and organizational need. Hourly/temp employees work 8-12 hours per week on average, and do not work more than 1,000 hours in a year.

LIBRARY AND COMMUNITY SERVICES
 ORGANIZATIONAL TEAMS
 DRAFT AS OF NOVEMBER 2, 2023
 66.25 FTE



Numbers of hourly/temp employees vary by season, individual employees' schedule availability, and organizational need. Hourly/temp employees work 8-12 hours per week on average, and do not work more than 1,000 hours in a year.